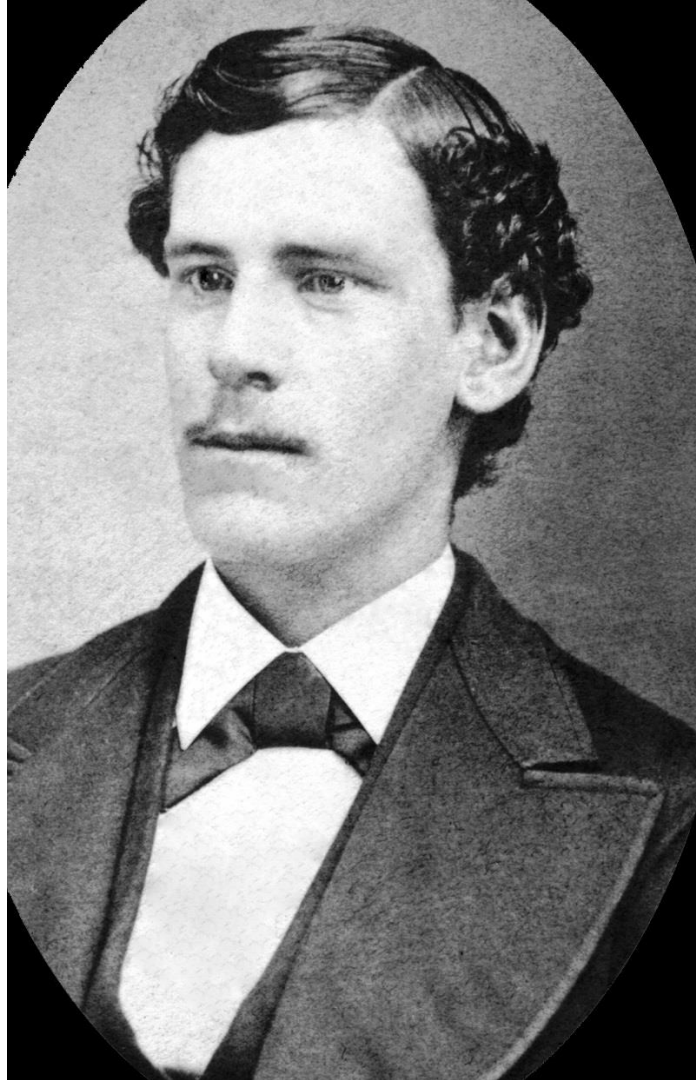


# Thomas Ross



Ross was an immigrant from Australia and first settled in California in 1870. The following year he traveled north to the Washington Territory and located himself in Kitsap County where he stayed and received all of his education. During territorial days he was appointed Clerk of the District Court and was elected as Kitsap County Auditor (1889-1890). In 1892, Ross gathered up all

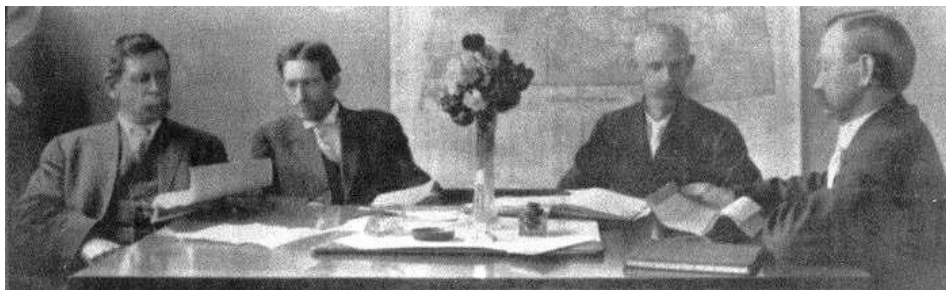
the county records and boarded the steamer Ellis (Sidney-Seattle run) to move his office to the new county seat of Sidney (now Port Orchard) from Port Madison.

He also lived in the then burgeoning town on Sinclair Inlet where he established the first abstract office in the County. He served as the Kitsap County Clerk (1891-1893) and was elected as the County Treasurer (1896-1901). While Ross was Treasurer he had a safe installed at his home at 703 Kitsap Street because the county did not have proper facilities to house a safe. That safe exists today just off the foyer on the ground floor of the home.

Ross also served in a variety of capacities for four federal judges; during this time he started keeping the county records. Ross was a veteran of civic affairs and as President in 1907, he was instrumental in forming the Port Orchard Athletic Club.

Interestingly, William C. Newman, the 8<sup>th</sup> Kitsap County Clerk served as secretary of the club with Thomas. In 1915, Ross took over the reins of the Kitsap Bank as their second president.

Thomas Ross is noted as one of the first and foremost citizens of Sidney and Port Orchard.



(The Kitsap Bank Board -Thomas Ross is either far left or far right in 1908)

(Special thanks to Shannon Childs (Kitsap Bank) for the portrait picture above, along with some of the facts in this biography. Additionally we give thanks to Helen Ross and the [Kitsap Historical Society](#) for their factual assistance!)