

**VALVE VAULT
REPLACEMENT PIPING
PLAN**

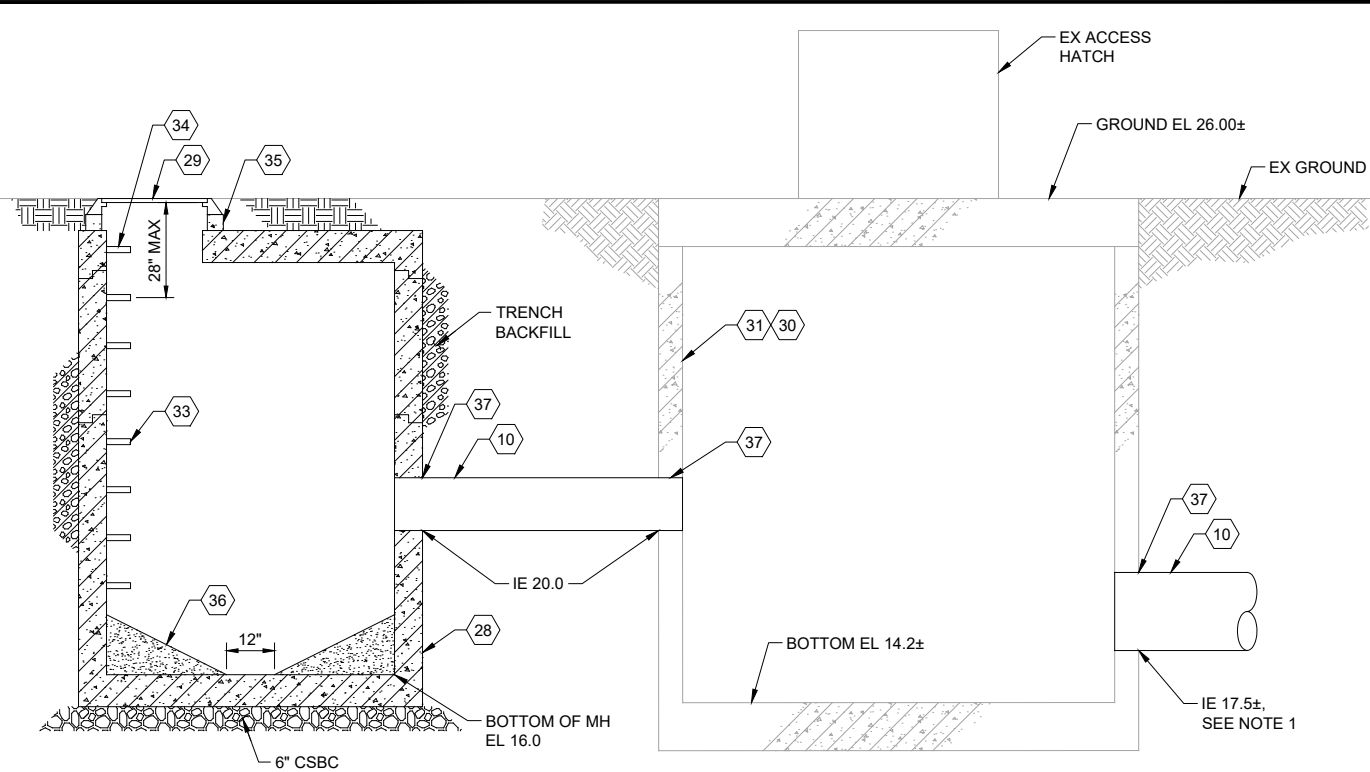
SCALE: 1/4" = 1'-0" **1** C-05

NOTES:

1. POTHOLE EX SEWER TO VERIFY DEPTH AND HORIZONTAL LOCATION PRIOR TO INSTALLING TEMPORARY BYPASS. PROVIDE THIS INFORMATION TO ENGINEER FOR VERIFICATION OF DESIGN.
2. RESTRAIN ALL MECHANICAL JOINTS AND PUSH ON JOINTS.
3. DUCTILE IRON FITTINGS SHALL CONFORM TO SYSTEM 3 IN SECTION 15060 OF THE SPECIFICATIONS.

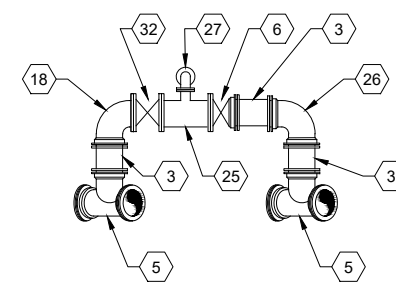
MATERIALS LIST:

- | | |
|---|---|
| 1 EX 12" PIPE, SEE NOTE 1 | 23 12" GV, MJ xMJ, SEE BYPASS PLAN ON DWG C-202 |
| 2 12" COUPLING | 24 12" WET TAP, SEE BYPASS PLAN ON DWG C-202 |
| 3 12" C900 PVC PIPE | 25 12" x 4" DI TEE, FL x FL |
| 4 12" DI 22.5° BEND, MJ x MJ | 26 12" DI 90° BEND, MJ x MJ |
| 5 12" DI VERTICAL TEE, MJ x MJ | 27 4" DI 90° BEND, FL x FL |
| 6 12" GV, FL x MJ | 28 72"Ø FLAT TOP MH |
| 7 18" x 12" DI WYE, MJ x FL | 29 MH FRAME AND COVER, PER DETAIL 2/C-02 |
| 8 18" x 12" DI WYE, FL x FL | 30 18" PIG RETRIEVER VAULT |
| 9 18" ADAPTOR, FL x MJ | 31 EX CONCRETE VAULT, 9' ID |
| 10 18" C905 PVC PIPE | 32 12" GV, FL x FL |
| 11 18" GV, FL x MJ | 33 POLYPROPYLENE SAFETY STEPS AT 12" OC |
| 12 12" DI 22.5° BEND, MJ x FL | 34 HAND HOLD PER DETAIL 1/C-02 |
| 13 18" DI 45° BEND, FL x MJ | 35 MH GRADE RING PER DETAIL 1/C-02 |
| 14 18" x 14" DI REDUCER, FL x FL | 36 GROUT BOTTOM OF MH AT 2H:1V SLOPE |
| 15 EX 12" PIG LAUNCH | 37 BOOT OR COLLAR |
| 16 EX 14" PIPE, SEE NOTE 1 | 38 4" HDPE FLANGE ADAPTOR WITH BACKUP RING |
| 17 18" DI 45° BEND, MJ x MJ | 39 EX 12" GV |
| 18 12" DI 90° BEND, FL x MJ | |
| 19 4" SDR 11 IPS HDPE PIPE | |
| 20 4" GV, FL x FL | |
| 21 4" SDR 11 IPS HDPE 45° BEND | |
| 22 AIR/VACUUM VALVE ASSEMBLY, SEE DETAIL 5/C-04 | |



**PIG RETRIEVER VAULT
SECTION**

SCALE: 1/2" = 1'-0" **A**



**VALVE VAULT
REPLACEMENT PIPING
SECTION**

SCALE: 1/4" = 1'-0" **B**

FILE NAME (UPDATED BY) PLOT DATE & TIME
 C:\P\WORKING\SEA\00950325\98A-P13-10282_C-2014.DWG (600) DEC 16 2016 15:10:09
 XREFS: Disclaimer, Fisher, Kitsap..._IB

No.	Revision	Date	By	App'd



Designed: T. Fisher, P.E.
 Drawn: P. Simon
 Checked: R. Dorn, P.E.
 Approved: M. Harper, P.E.

Scale:
 As Shown
 One Inch At Full Scale
 If Not One Inch Scale Accordingly



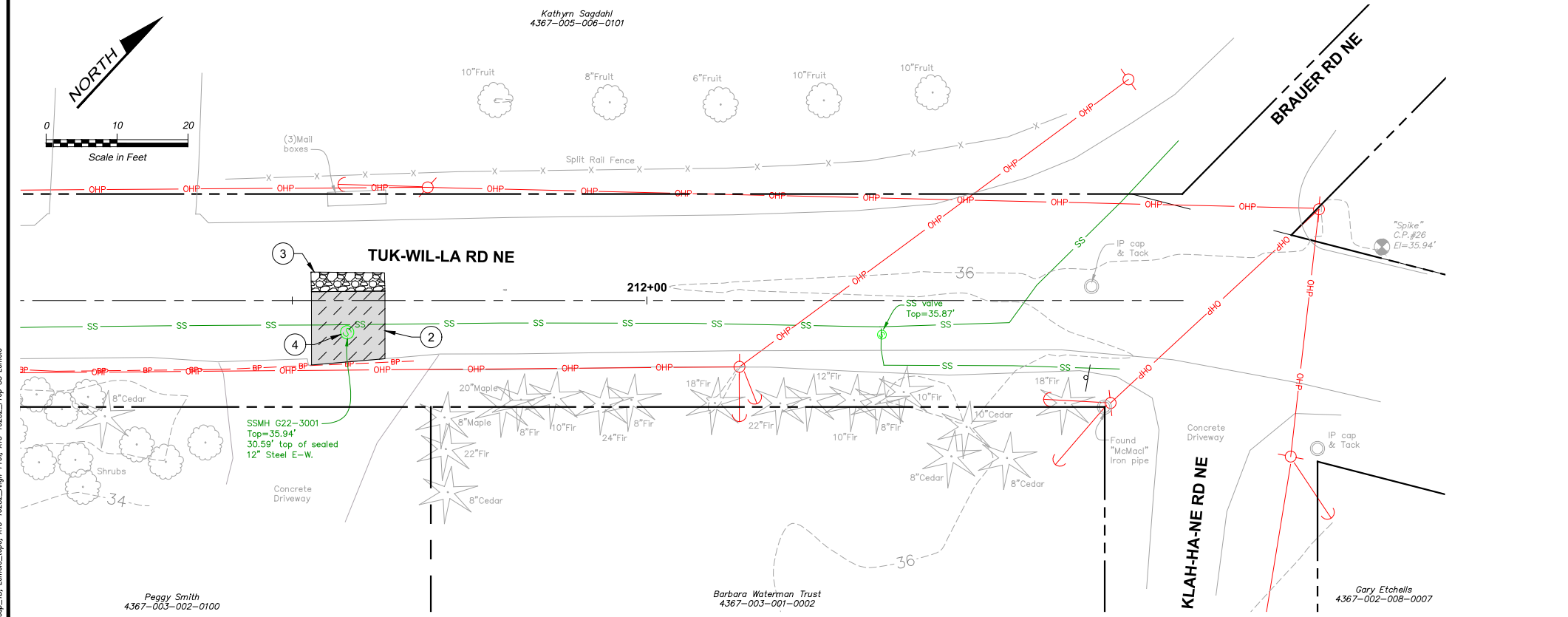
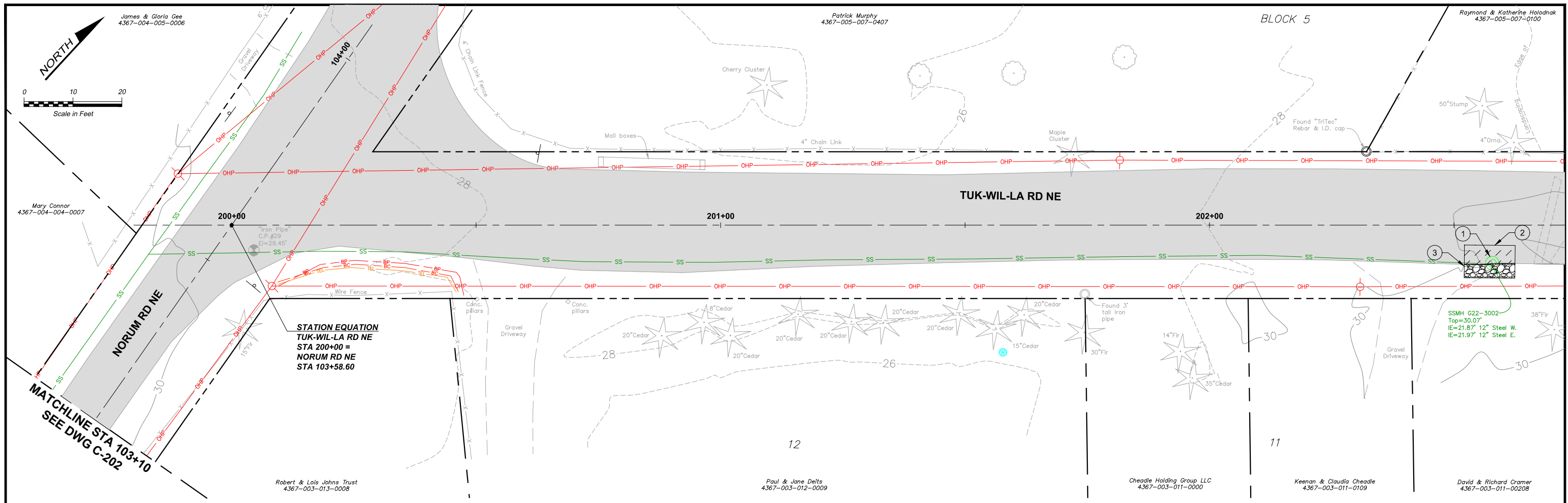
Kitsap County Public Works
 614 Division Street, MS 26
 Port Orchard, WA 98366

KITSAP COUNTY PS 16/67 UPGRADES
LEMOLO IMPROVEMENTS
CIVIL AND SITE DETAILS

**Call 48 Hours
 Before You Dig**
 1-800-424-5555
 UNDERGROUND SERVICE

RECORD DRAWING

Drawing: **C-201**
 Sheet: **98** Of **101**
 File: 98A-P13-10282_C-201
 Date: February 2017



- CONSTRUCTION NOTES:**
- ① SEAL SSMH G22-3002, SEE DETAIL 1/C-202
 - ② HMA T-PATCH, SEE DETAIL 2/C-204
 - ③ RESTORE DISTURBED GRAVEL SHOULDER WITH 2" MIN CSTC
 - ④ SEAL SSMH G22-3001, SEE DETAIL 1/C-202

RECORD DRAWING

Call 48 Hours Before You Dig
1-800-424-5555
 UNDERGROUND SERVICE

FILE NAME: (UPDATED BY) [REDACTED]
 C:\P\WORKING\SEA\100650325\100-P13-10282_C-203.DWG (COC)
 XREFS: Disclaimer, Fisher, Kitsap, Lemolo, Logo, X13-10282_Align-Prop, X13-10282_Prog, SS, Lemolo

No.	Revision	Date	By	App'd

HDR
 HDR Engineering, Inc.

BHC CONSULTANTS
 BHC Consultants, LLC
 1601 Fifth Avenue, Suite 500
 Seattle, Washington 98101
 206.505.3400
 206.505.3406 (fax)
 www.bhcconsultants.com

Designed: T. Fisher, P.E.
 Drawn: P. Simon
 Checked: R. Dorn, P.E.
 Approved: M. Harper, P.E.

Scale:
 1" = 10'-0"
 One Inch At Full Scale
 If Not One Inch Scale Accordingly

Kitsap County Public Works
 614 Division Street, MS 26
 Port Orchard, WA 98366

**KITSAP COUNTY PS 16/67 UPGRADES
 LEMOLO IMPROVEMENTS
 TUK-WIL-LA RD NE
 SHEET 2 OF 2**

Drawing: **C-203**
 Sheet: **100** Of **101**
 File: 100-P13-10282_C-203
 Date: February 2017

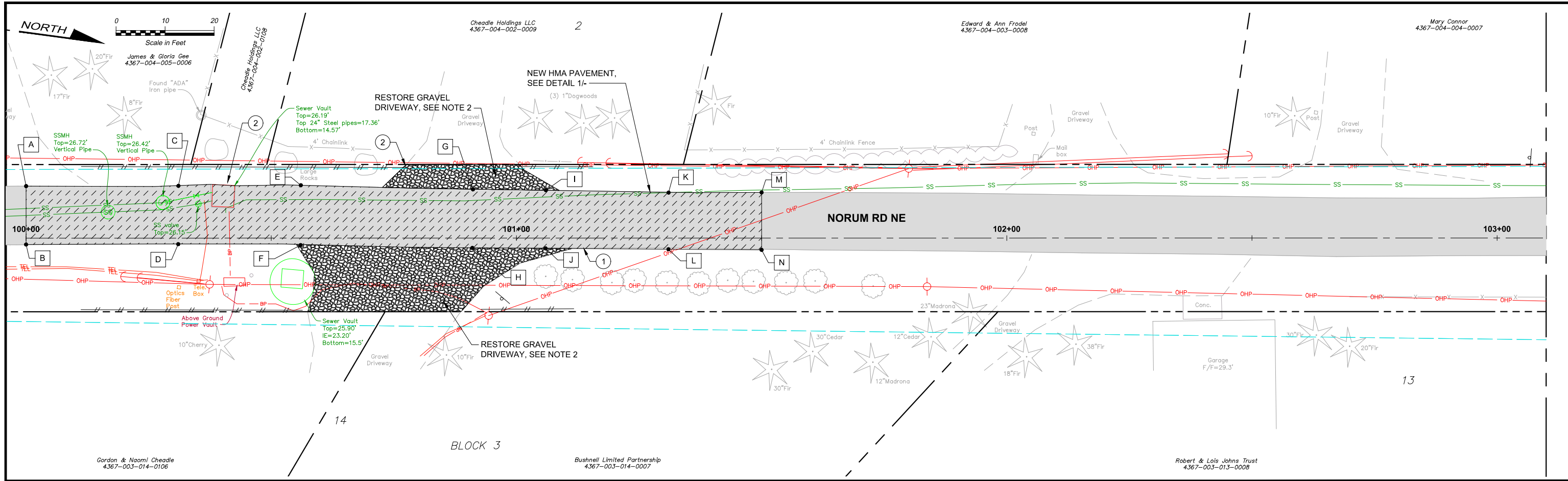
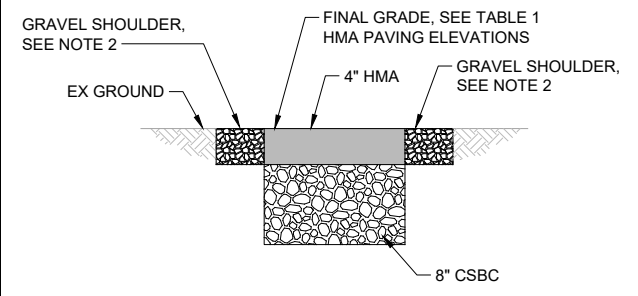
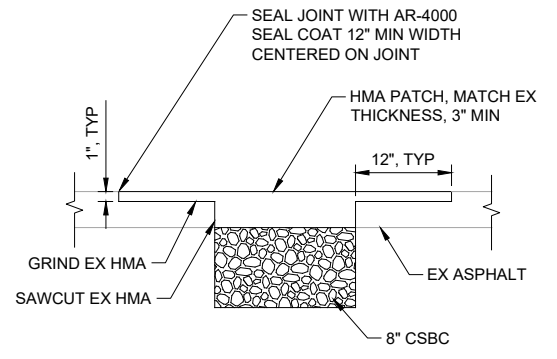


TABLE 1 HMA PAVING ELEVATIONS

POINT	STATION	OFFSET	FINAL GRADE
A	100+06.0	10.6	26.87
B	100+06.0	1.3	26.60
C	100+31.0	10.7	26.35
D	100+31.0	1.2	26.20
E	100+56.0	10.7	25.79
F	100+56.0	1.3	25.78
G	100+81.0	10.1	25.52
H	100+81.0	1.9	25.45
I	101+06.0	9.7	25.43
J	101+06.0	2.0	25.27
K	101+31.0	9.3	25.66
L	101+31.0	2.0	25.52
M	101+50.0	9.3	26.07
N	101+50.0	2.4	25.84



NE NORUM ROAD PAVING RESTORATION DETAIL 1
NTS TYP



HMA T-PATCH DETAIL 2
NTS TYP

- CONSTRUCTION NOTES:**
- GRIND AND REMOVE EXISTING ASPHALT AND BASE COURSE AS NEEDED TO MEET FINISH GRADE REQUIREMENTS. RESTORE ROAD PER DETAIL 1/-.
 - REPLACE DISTURBED GRAVEL SHOULDER AND DRIVEWAYS WITH 4" CSTC.

RECORD DRAWING

Call 48 Hours Before You Dig
1-800-424-5555
UNDERGROUND SERVICE

FILE NAME (UPDATED BY) APR 23 2015 11:52:41
 C:\PWORKING\SEA\10050325\101-P13-10282-C-204.DWG (GDC)
 XREFS: Disclaimer, Fisher, Kitsap, IB, Lemolo, topo, X13-10282_Align-Prof, X13-10282_Prop_SS

No.	Revision	Date	By	App'd

BHC CONSULTANTS, LLC
1601 Fifth Avenue, Suite 500
Seattle, Washington 98101
206.505.3400
206.505.3406 (fax)
www.bhcconsultants.com

Designed: T. Fisher, P.E.
Drawn: M. Caldwell
Checked: R. Dorn, P.E.
Approved: M. Harper, P.E.

Scale: As Shown
One Inch At Full Scale
If Not One Inch Scale Accordingly



Kitsap County Public Works
614 Division Street, MS 26
Port Orchard, WA 98366

KITSAP COUNTY PS 16/67 UPGRADES
LEMOLO IMPROVEMENTS
ROAD WAY PLANS

Drawing: **C-204**
Sheet: **101** Of **101**
File: 101-P13-10282_C-204
Date: February 2017