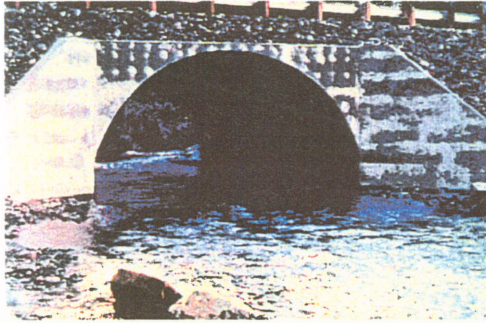


Kitsap County Stormwater Management



**Ordinance
and
Design Manual**



KITSAP COUNTY STORMWATER MANAGEMENT ORDINANCE AND DESIGN MANUAL

Effective Date: April 1, 1997



Kitsap County Department of Public Works
Stormwater Division
614 Division Street, MS-26
Port Orchard, WA 98366
360-876-7121



Printed on Recycled Paper

Registered Copy # _____

