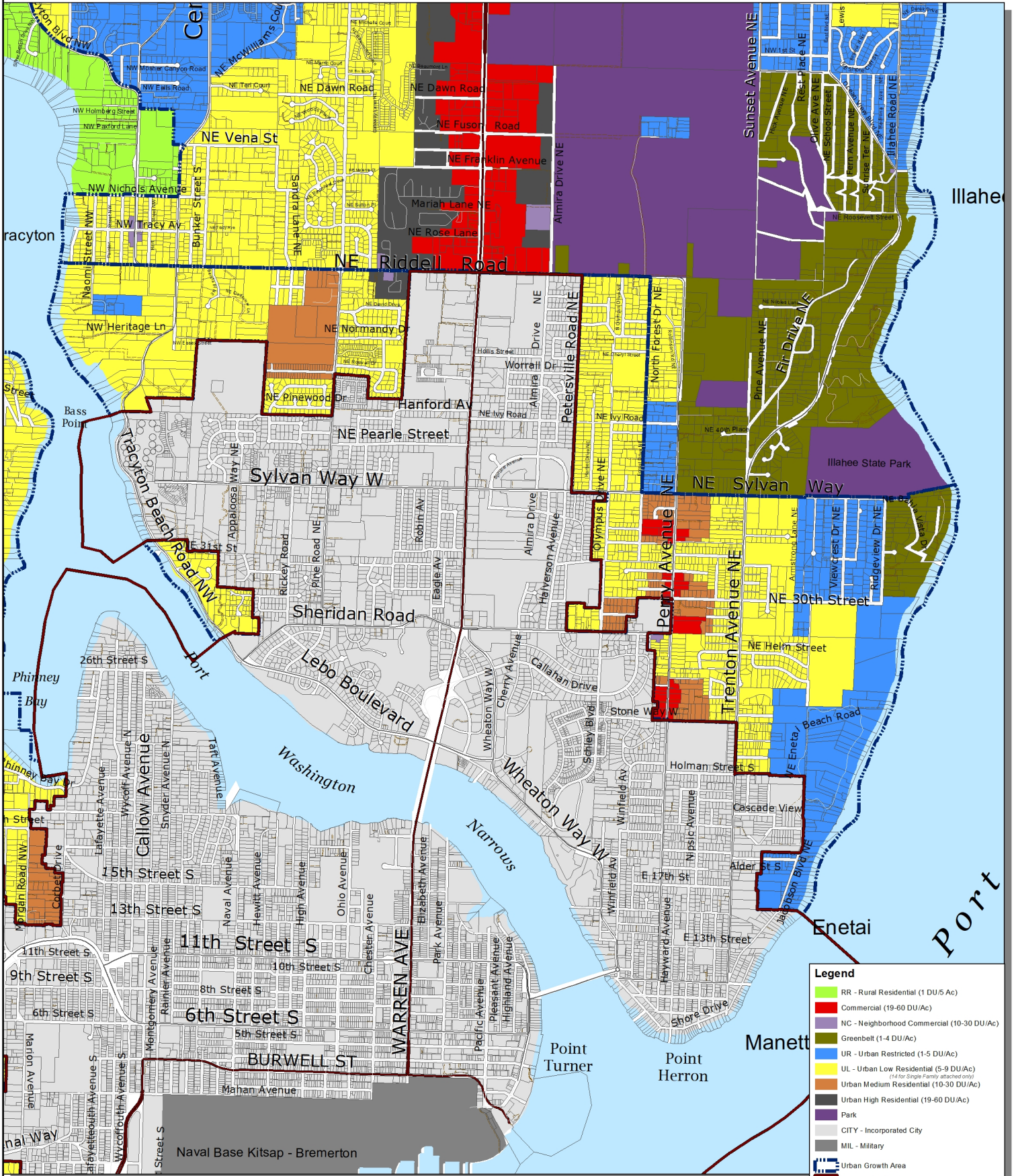


Bremerton East Urban Growth Area

DRAFT



Legend	
[Green Box]	RR - Rural Residential (1 DU/5 Ac)
[Red Box]	Commercial (19-60 DU/Ac)
[Purple Box]	NC - Neighborhood Commercial (10-30 DU/Ac)
[Dark Green Box]	Greenbelt (1-4 DU/Ac)
[Blue Box]	UR - Urban Restricted (1-5 DU/Ac)
[Yellow Box]	UL - Urban Low Residential (5-9 DU/Ac) <small>(1.4 for Single Family attached only)</small>
[Orange Box]	Urban Medium Residential (10-30 DU/Ac)
[Dark Blue Box]	Urban High Residential (19-60 DU/Ac)
[Light Blue Box]	Park
[Grey Box]	CITY - Incorporated City
[Dark Grey Box]	MIL - Military
[Thick Blue Line]	Urban Growth Area
[Thin Blue Line]	Incorporated City
[Red Line]	State Highway
[Thin Grey Line]	Collector / Arterial
[Dashed Grey Line]	Local Access; Local Road
[Dotted Grey Line]	Easement
[Blue Wavy Line]	Greater Puget Sound hydrology

Zoning - Preferred Alternative - Board of Commissioner Direction

This map was created from existing map sources, not from field surveys. Determination of fitness for use lies with the user; as does the responsibility for understanding the accuracy and limitations of this map and data.

The information on this map may have been collected from various sources and can change over time without notice.

While great care was taken in making this map, there is no guarantee or warranty of its accuracy as to labeling, placement or location of any geographic features present. This map is intended for informational purposes only and is not a substitute for a field survey.

Kitsap County and its officials and employees assume no responsibility or legal liability for the accuracy, completeness, reliability or timeliness of any information on this map.

Map Published Date: April 22, 2024

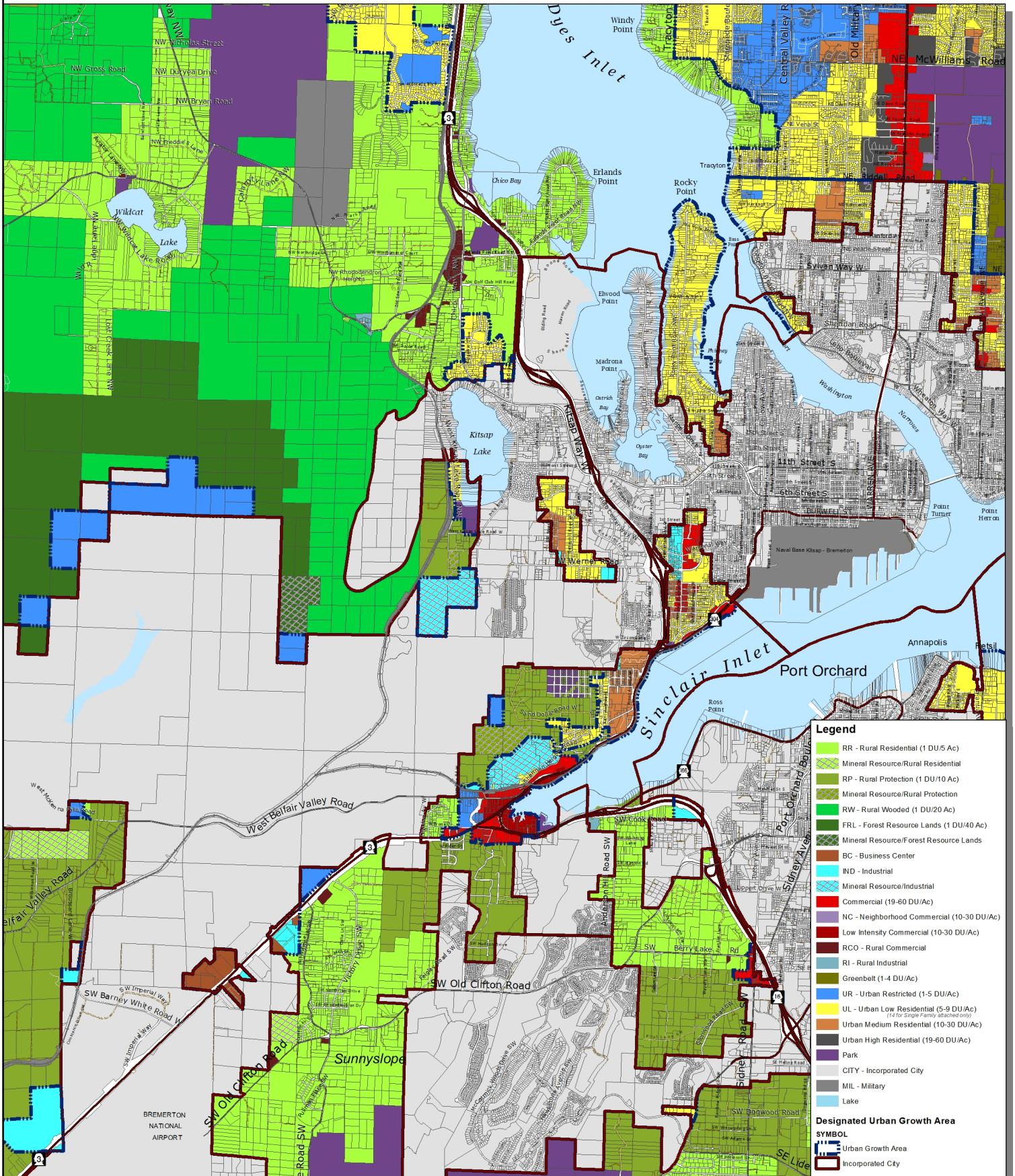


Kitsap County Department of Community Development
 614 Division Street, MS-36, Port Orchard, Washington 98366
 VOICE (360) 337-5777 (Kitsap One) * <https://www.kitsapgov.com/>



Bremerton West Urban Growth Area

DRAFT



Legend

- RR - Rural Residential (1 DU/5 Ac)
- Mineral Resource/Rural Residential
- RP - Rural Protection (1 DU/10 Ac)
- Mineral Resource/Rural Protection
- RW - Rural Wooded (1 DU/20 Ac)
- FRL - Forest Resource Lands (1 DU/40 Ac)
- Mineral Resource/Forest Resource Lands
- BC - Business Center
- IND - Industrial
- Mineral Resource/Industrial
- Commercial (19-60 DU/Ac)
- NC - Neighborhood Commercial (10-30 DU/Ac)
- Low Intensity Commercial (10-30 DU/Ac)
- RCO - Rural Commercial
- RI - Rural Industrial
- Greenbelt (1-4 DU/Ac)
- UR - Urban Restricted (1-5 DU/Ac)
- UL - Urban Low Residential (5-9 DU/Ac)
(1.4 for Single Family attached only)
- Urban Medium Residential (10-30 DU/Ac)
- Urban High Residential (19-60 DU/Ac)
- Park
- CITY - Incorporated City
- MIL - Military
- Lake

Designated Urban Growth Area

SYMBOL

- Urban Growth Area
- Incorporated City
- State Highway
- Collector / Arterial
- Local Access; Local Road
- Easement
- Railroad Lines
- Greater Puget Sound hydrology

Preferred Alternative – Board of Commissioner Direction

This map was created from existing map sources, not from field surveys. Determination of fitness for use lies with the user; as does the responsibility for understanding the accuracy and limitations of the map and data.

The information on this map may have been collected from various sources and can change over time without notice.

While great care was taken in making this map, there is no guarantee or warranty of its accuracy as to labeling, placement or location of any geographic features present. This map is intended for informational purposes only and is not a substitute for a field survey.

Kitsap County and its officials and employees assume no responsibility or legal liability for the accuracy, completeness, reliability, or timeliness of any information on this map.

Map Published Date: April 22, 2024

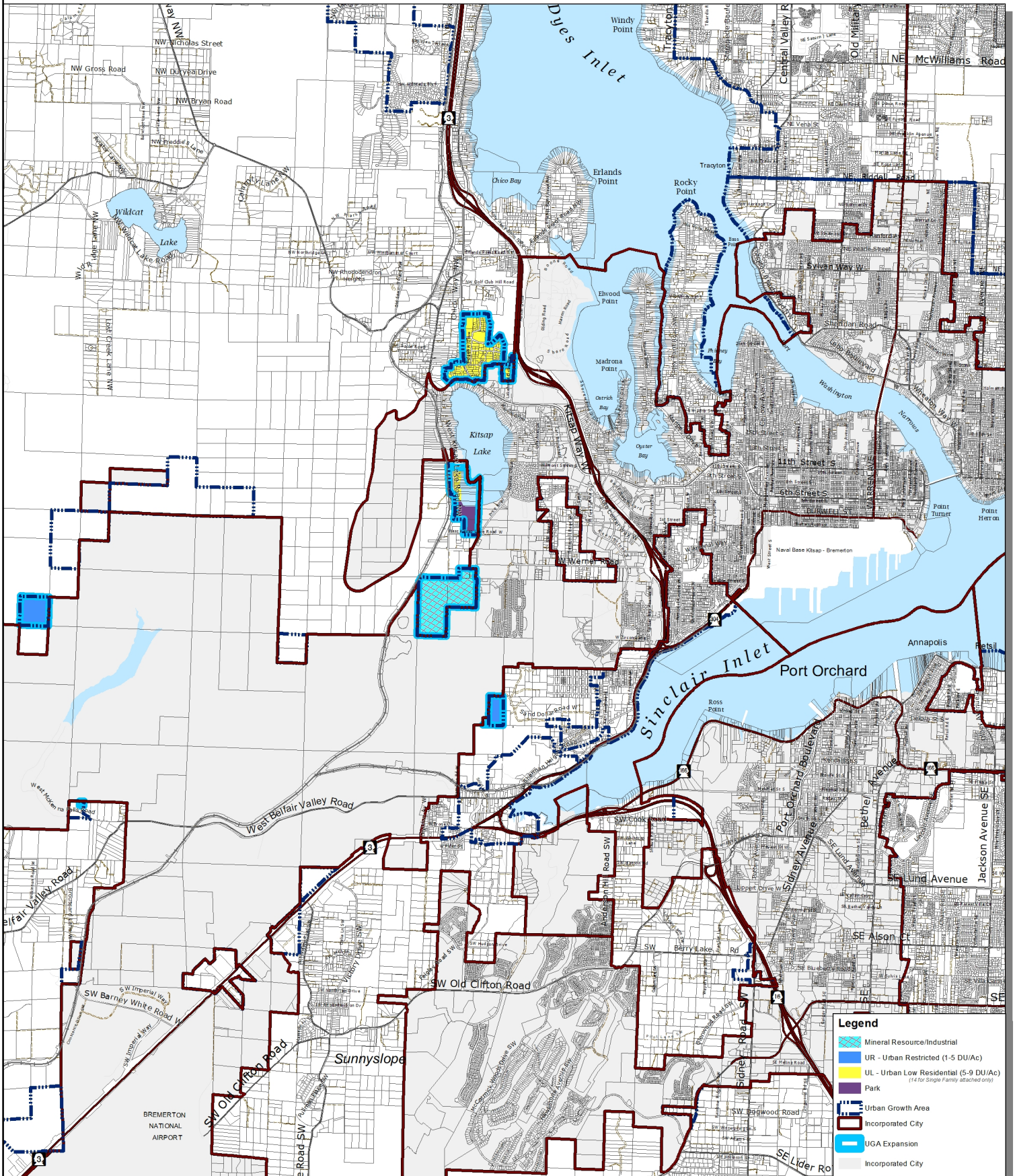


Kitsap County Department of Community Development
 614 Division Street, MS-36, Port Orchard, Washington 98366
 VOICE (360) 337-5777 (Kitsap One) * <https://www.kitsapgov.com/>



Bremerton West Urban Growth Area

DRAFT



Alternative Changes – Board of Commissioner Direction

This map was created from existing map sources, not from field surveys. Determination of fitness for use lies with the user; as does the responsibility for understanding the accuracy and limitations of this map and data.

The information on this map may have been collected from various sources and can change over time without notice. While great care was taken in making this map, there is no guarantee or warranty of accuracy as to labeling, placement or location of any geographic features present. This map is intended for informational purposes only and is not a substitute for a field survey.

Kitsap County and its officials and employees assume no responsibility or legal liability for the accuracy, completeness, reliability, or timeliness of any information on this map.

Map Published Date: April 22, 2024

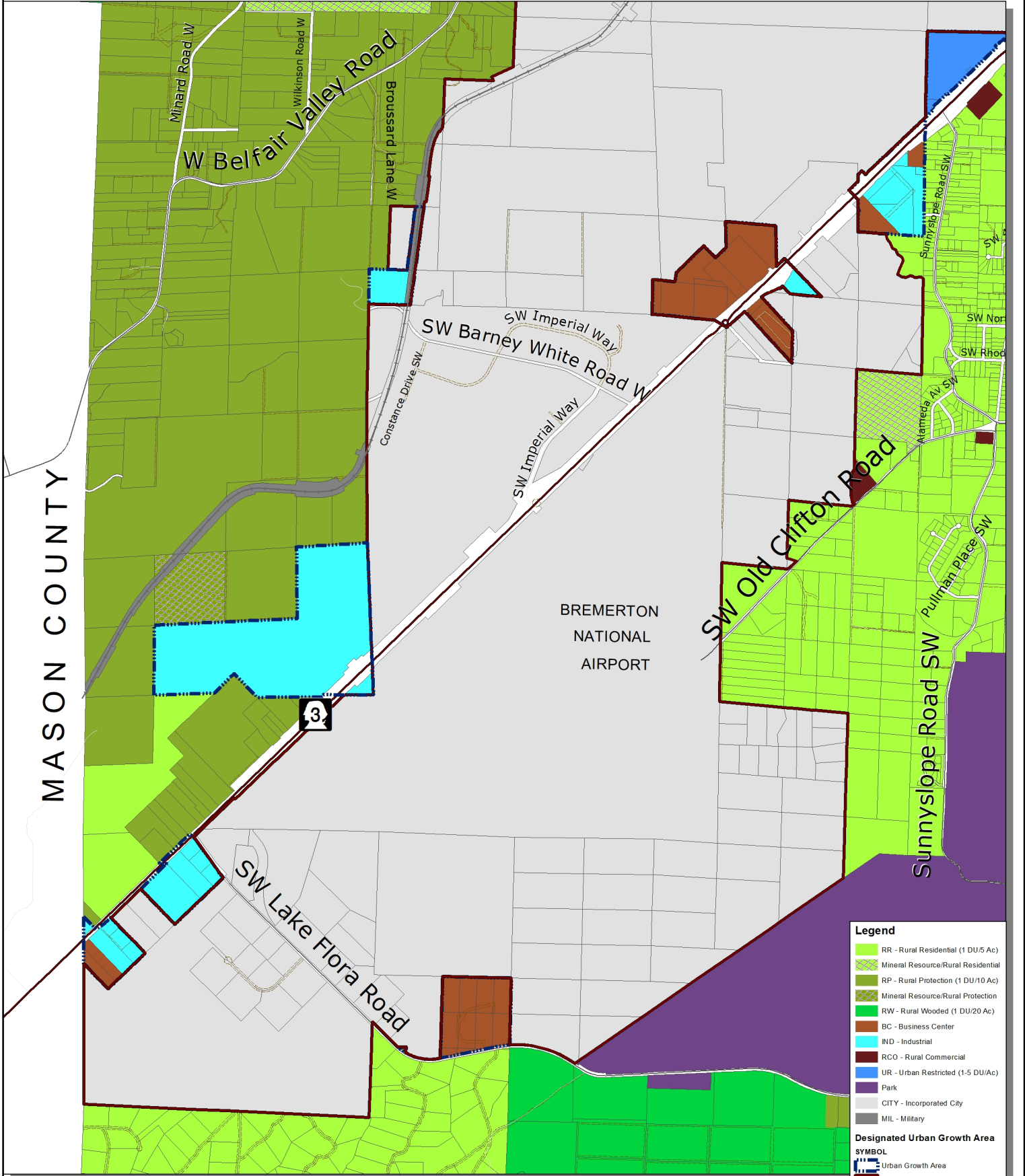


Kitsap County Department of Community Development
 614 Division Street, MS-36, Port Orchard, Washington 98366
 VOICE (360) 337-5777 (Kitsap One) * <https://www.kitsapgov.com/>



Puget Sound Industrial Center - Bremerton

DRAFT



MASON COUNTY

BREMERTON
NATIONAL
AIRPORT

Legend

- RR - Rural Residential (1 DU/5 Ac)
- Mineral Resource/Rural Residential
- RP - Rural Protection (1 DU/10 Ac)
- Mineral Resource/Rural Protection
- RW - Rural Wooded (1 DU/20 Ac)
- BC - Business Center
- IND - Industrial
- RCO - Rural Commercial
- UR - Urban Restricted (1-5 DU/Ac)
- Park
- CITY - Incorporated City
- MIL - Military

Designated Urban Growth Area

SYMBOL

- Urban Growth Area
- Incorporated City
- State Highway
- Collector / Arterial
- Local Access, Local Road
- Easement
- Railroad Lines

Zoning - Preferred Alternative – Board of Commissioner Direction

This map was created from existing map sources, not from field surveys. Determination of fitness for use lies with the user, as does the responsibility for understanding the accuracy and limitations of the map and data. The information on this map may have been collected from various sources and can change over time without notice. While great care was taken in making this map, there is no guarantee or warranty of its accuracy as to labeling, placement or location of any geographic features shown. This map is intended for informational purposes only and is not a substitute for a field survey. Kitsap County, and its officials and employees, assume no responsibility or legal liability for the accuracy, completeness, suitability or timeliness of any information on this map. Map Published Date: April 22, 2024

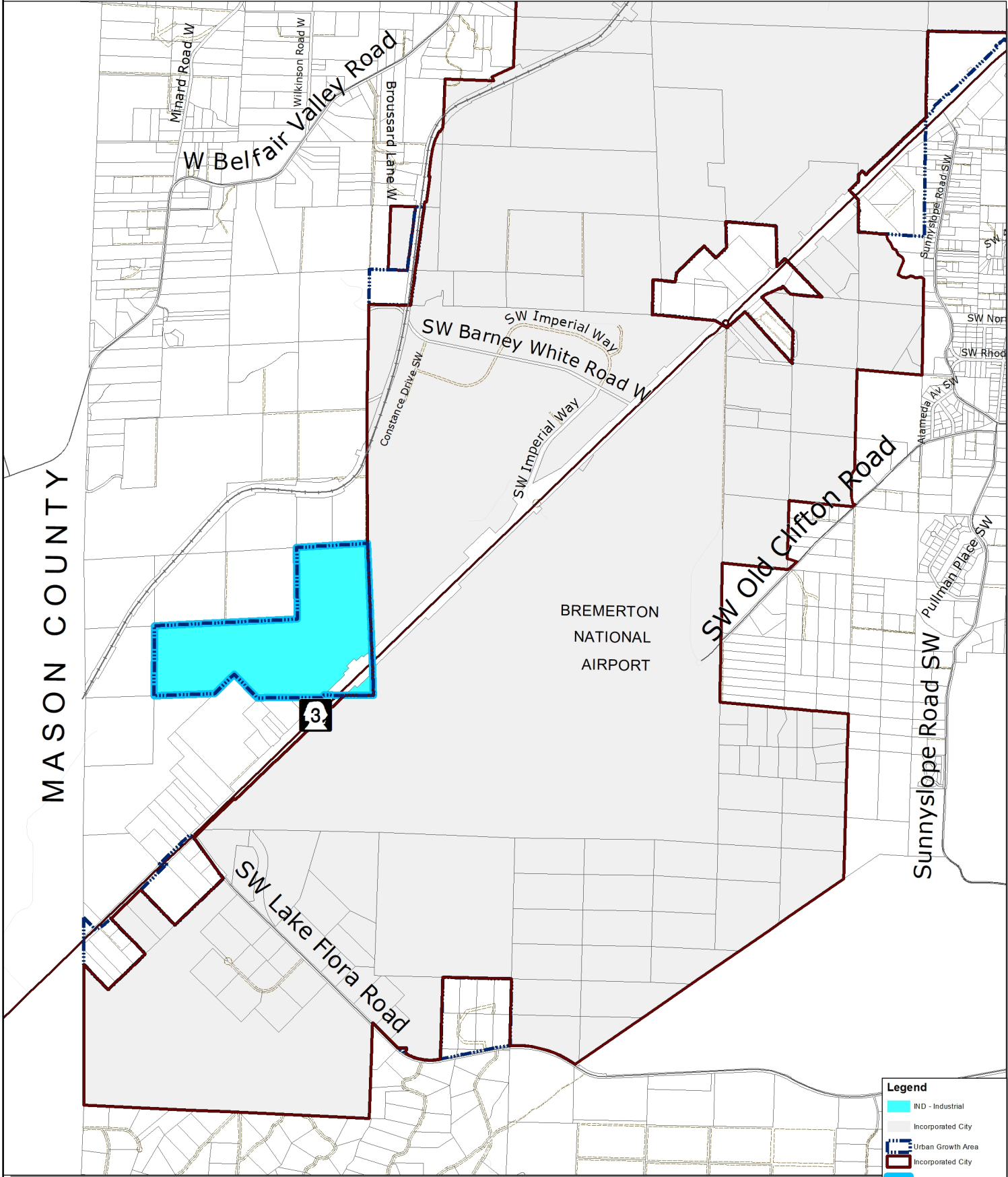


Kitsap County Department of Community Development
614 Division Street, MS-36, Port Orchard, Washington 98366
VOICE (360) 337-5777 (Kitsap One) * <https://www.kitsapgov.com/>



Puget Sound Industrial Center - Bremerton

DRAFT



MASON COUNTY

BREMERTON
NATIONAL
AIRPORT

Legend

- IND - Industrial
- Incorporated City
- Urban Growth Area
- Incorporated City
- Expansion
- State Highway
- Collector / Arterial
- Local Access; Local Road
- Easement
- Railroad Lines

Zoning - Alternative Changes – Board of Commissioner Direction

This map was created from existing map sources, not from field surveys. Determination of fitness for use lies with the user, as does the responsibility for understanding the accuracy and limitations of this map and data.

The information on this map may have been collected from various sources and can change over time without notice.

While great care was taken in making this map, there is no guarantee or warranty of its accuracy as to labeling, placement or location of any geographic features presented. This map is intended for informational purposes only and is not a substitute for a field survey.

Kitsap County, and its officials and employees, assume no responsibility or legal liability for the accuracy, completeness, suitability or timeliness of any information on this map.

Map Published Date: April 22, 2024



Kitsap County Department of Community Development
614 Division Street, MS-36, Port Orchard, Washington 98366
VOICE (360) 337-5777 (Kitsap One) * <https://www.kitsapgov.com/>

