



Kitsap County Public Works

Caring about your every day



SOLID WASTE

- Recycling Education
- Reduce Waste
- Safe Disposal

SEWER

- Sewage Collection
- Sewage Treatment
- Water Reuse

STORMWATER

- Reduce Flooding
- Prevent Pollution
- Restore Fish Habitat

ROADS

- Preserve Roadways
- Efficient Traffic
- Improve Safety and Capacity



Kitsap County Department of Public Works



Central Kitsap Sewer Capital Project Update

- Pump Station 4 and Old Town Piping Upgrades
- Pump Station 3 Upgrades
- CKTP Solids and Liquid Hauled Waste Upgrades
- 20-year Sewer Facility Plan (2024-2044)



Pump Station 4
Fredrickson and Bucklin Hill Rd



Pump Station 3
Silverdale Waterfront Park



Central Kitsap Treatment Plant
(CKTP)



Kitsap County Department of Public Works



Pump Station 4 and Piping Upgrades

- Replace aging equipment
- Replace associated gravity piping in Old Town Silverdale and force main along Bucklin Hill
- Increase capacity and improve efficiency
- Improved odor control

Construction: Sept 2023 – March 2025

Total cost estimate: \$12,164,000



Pump Station 4
Corner of Fredrickson and Bucklin Hill Road



Kitsap County Department of Public Works



Pump Station 4 and Piping Upgrades



Tie-in to existing forcemain



New forcemain at Pump Station 4



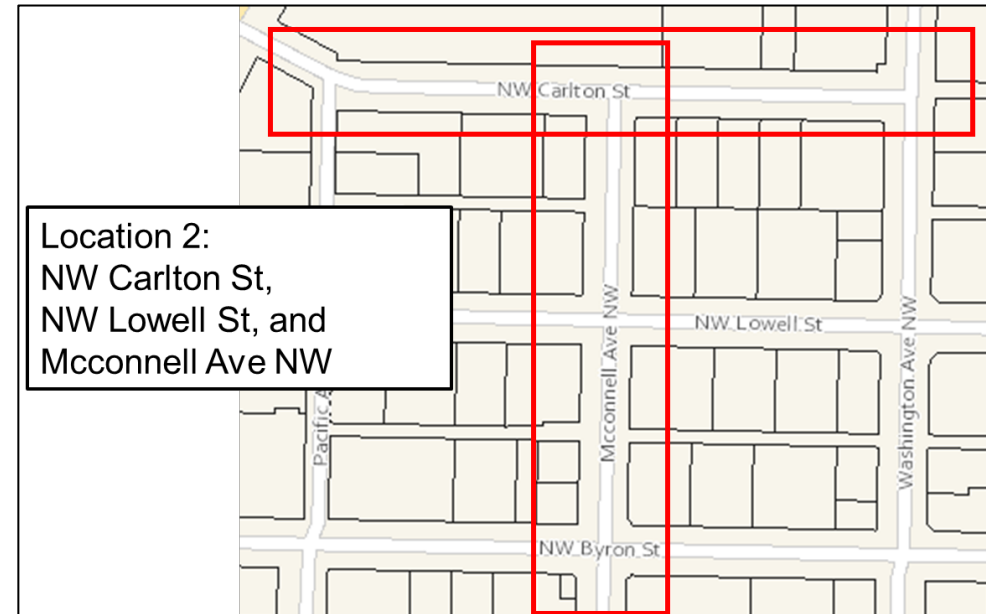
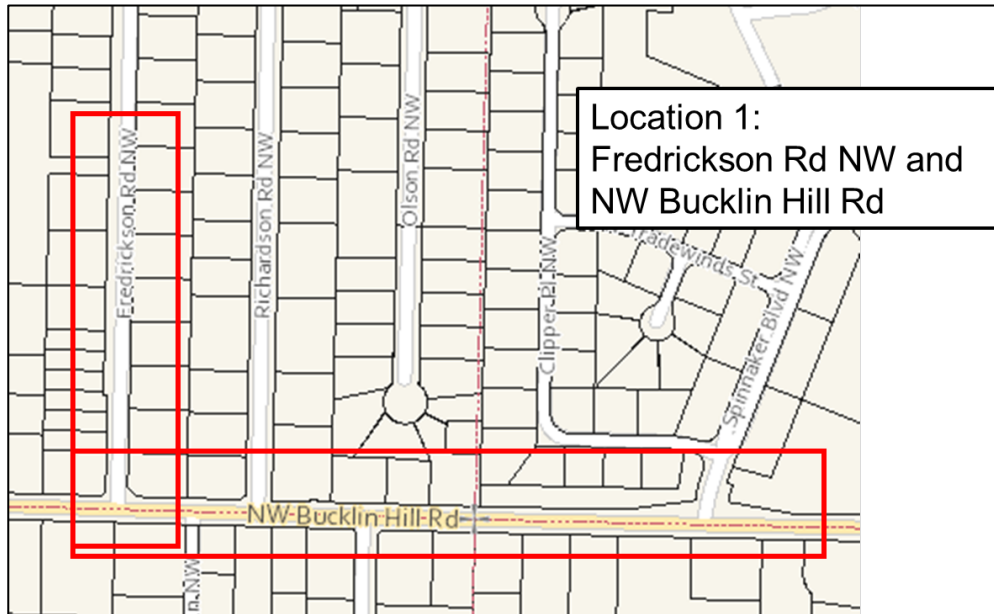
Installed forcemain on Bucklin Hill



Kitsap County Department of Public Works



Pump Station 4 Pipe Upgrade Locations



- Expect intermittent detours and traffic delays during construction
- Local access provided, project will accommodate planned community activities in Old Town.
- See the [Road Report](https://www.kcowa.us/roadreport) for traffic updates on all Public Works projects ([kcowa.us/roadreport](https://www.kcowa.us/roadreport))



Kitsap County Department of Public Works



Pump Station 3 Upgrades

- Replace pump station with new facility, moving bldg. away from beach.
- New facility will have smaller footprint, will be designed to look less industrial, and will include public enjoyment space.
- Currently in preliminary architectural design.

Estimated construction: Spring 2026

Total cost estimate: \$8,134,000



Pump Station 3
Silverdale Waterfront Park



Kitsap County Department of Public Works

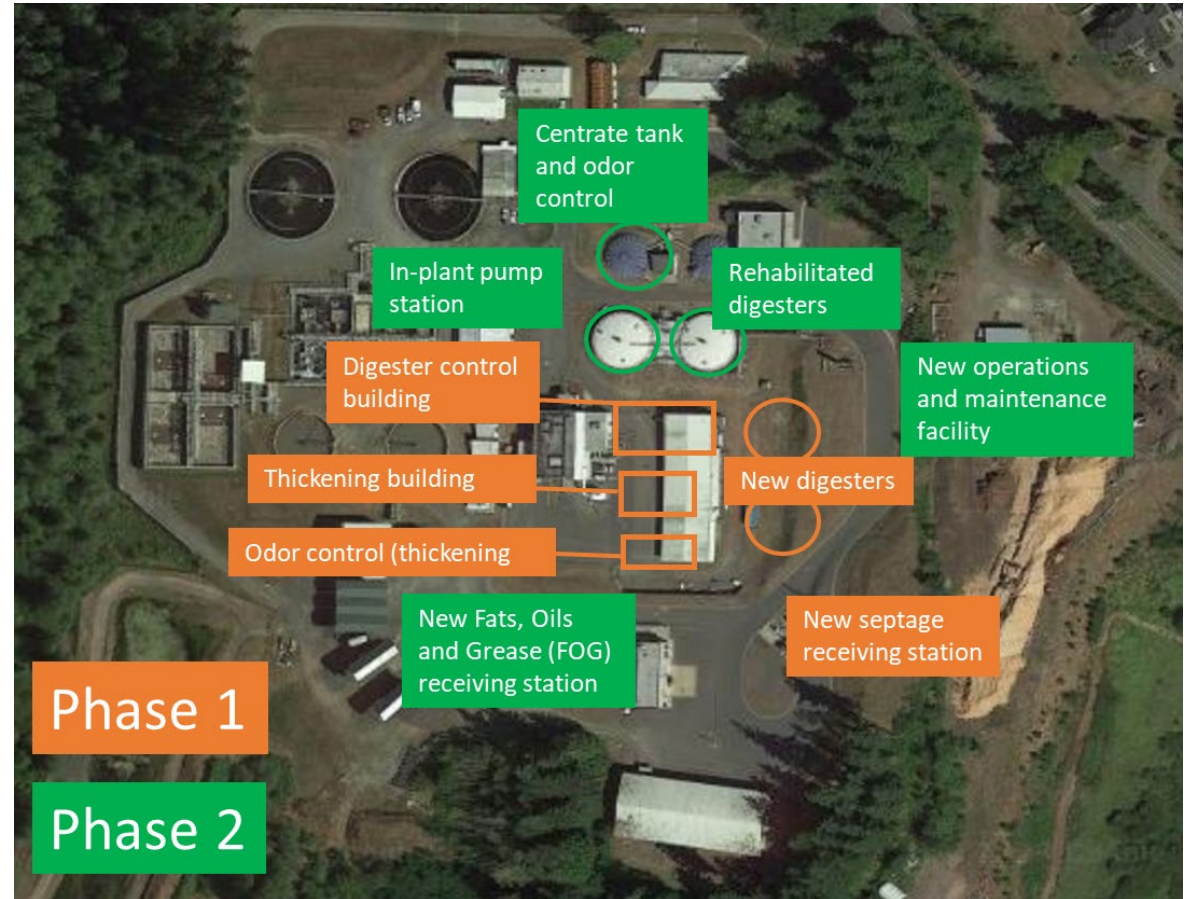


CKTP Solids Upgrades

- 1970's solids processing Digesters are at end of life expectancy
- Additional infrastructure needed by 2026
- Complete in two phases
 - Phase 1: Jan 2025 – Dec 2026
 - Phase 2: Jan 2027 – Dec 2028

Total cost estimate: \$82,000,000 *

* Proportionate share from City of Poulsbo and Keyport USN





Kitsap County Department of Public Works

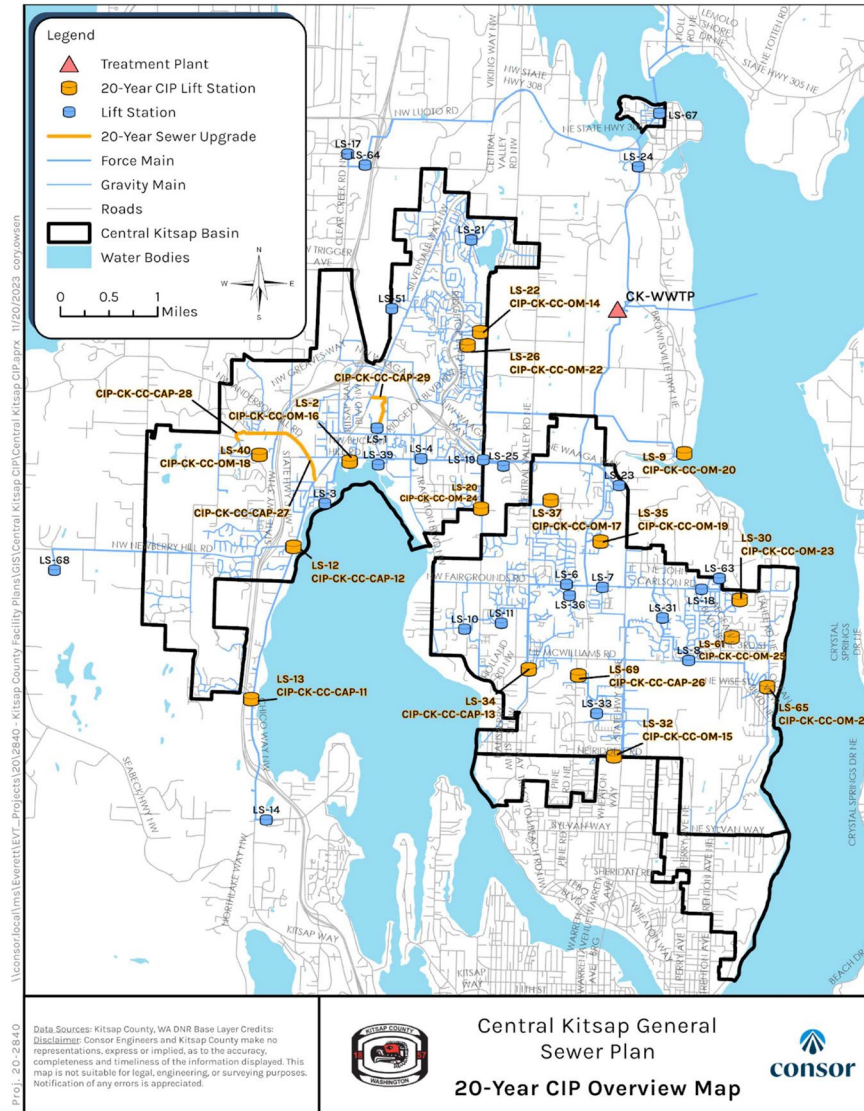


Sewer Facility Plan

- 20-year Facility Plan covers all four Kitsap County sewer service areas (2024-2044)
- Consistent with Kitsap County Comprehensive Plan zoning and population projections
- Updates will include collection/conveyance system and sewer plant project recommendations

Total cost estimate: \$3,763,000 *

* Proportionate share from City of Poulsbo and Keyport USN





Kitsap County Department of Public Works



Questions? / Sewer Utility Division Contacts

Stella Vakarcs

Division Manager

svakarcs@kitsap.gov

Anthony Burgess

Capital Projects Manager

awburgess@kitsap.gov

Nick Martin

Sewer Utility Construction Manager

nmartin@kitsap.gov

Lisa Edge

Education and Outreach

ledge@kitsap.gov

Find information on all Public Works projects: [Kitsap.gov/pw](https://www.kitsap.gov/pw)