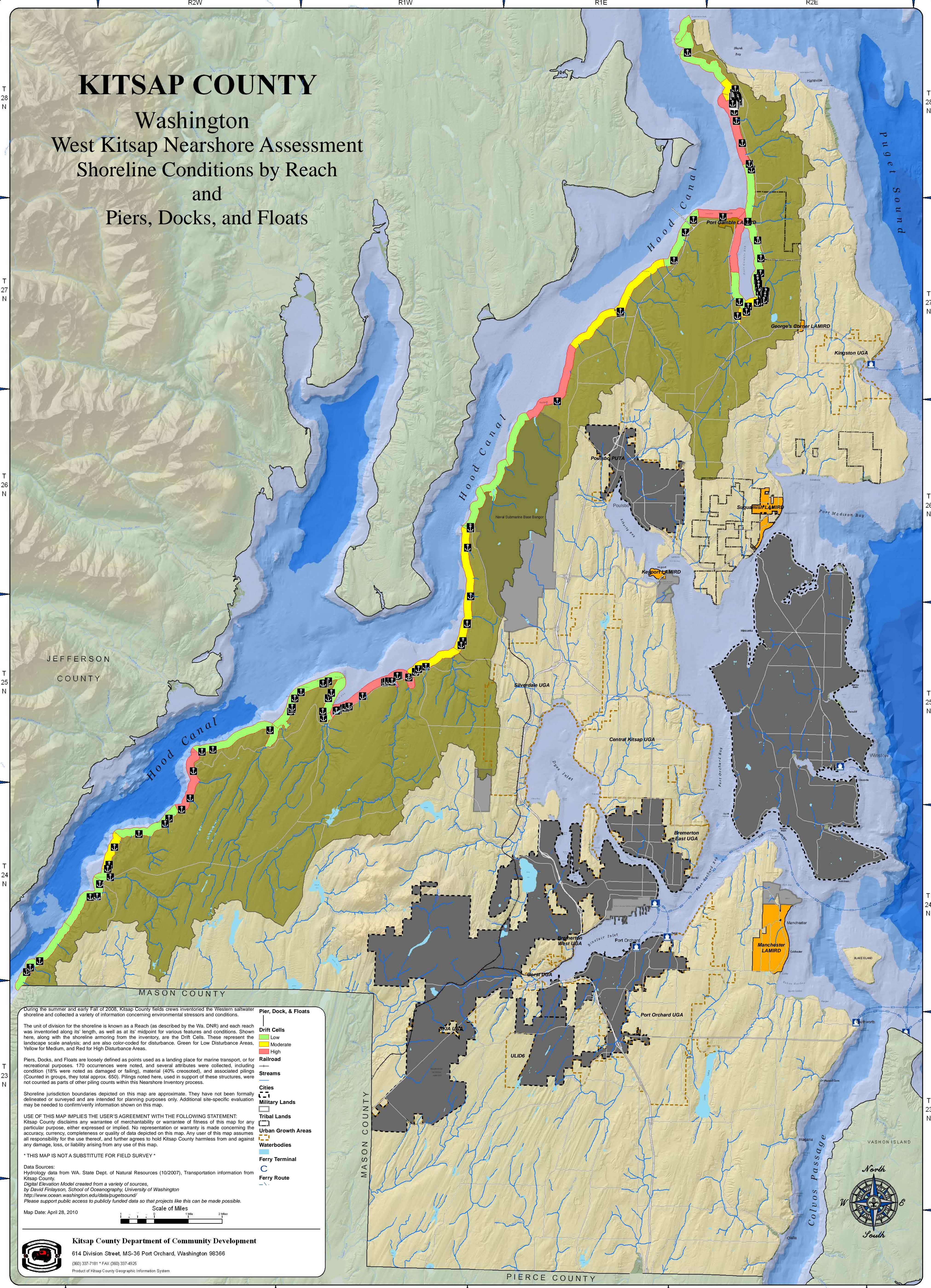


KITSAP COUNTY

Washington West Kitsap Nearshore Assessment Shoreline Conditions by Reach and Piers, Docks, and Floats



During the summer and early Fall of 2008, Kitsap County field crews inventoried the Western saltwater shoreline and collected a variety of information concerning environmental stressors and conditions.

The unit of division for the shoreline is known as a Reach (as described by the Wa. DNR) and each reach was inventoried along its length, as well as at its midpoint for various features and conditions. Shown here, along with the shoreline armoring from the inventory, are the Drift Cells. These represent the landscape scale analysis, and are also color-coded for disturbance. Green for Low Disturbance Areas, Yellow for Medium, and Red for High Disturbance Areas.

Piers, Docks, and Floats are loosely defined as points used as a landing place for marine transport, or for recreational purposes. 170 occurrences were noted, and several attributes were collected, including condition (18% were noted as damaged or failing), material (40% creosoted), and associated pilings (Counted in groups, they total approx. 650). Pilings noted here, used in support of these structures, were not counted as parts of other piling counts within this Nearshore Inventory process.

Shoreline jurisdiction boundaries depicted on this map are approximate. They have not been formally delineated or surveyed and are intended for planning purposes only. Additional site-specific evaluation may be needed to confirm/verify information shown on this map.

USE OF THIS MAP IMPLIES THE USER'S AGREEMENT WITH THE FOLLOWING STATEMENT:
Kitsap County disclaims any warranty of merchantability or warranty of fitness of this map for any particular purpose, either expressed or implied. No representation or warranty is made concerning the accuracy, currency, completeness or quality of data depicted on this map. Any user of this map assumes all responsibility for the use thereof, and further agrees to hold Kitsap County harmless from and against any damage, loss, or liability arising from any use of this map.

* THIS MAP IS NOT A SUBSTITUTE FOR FIELD SURVEY *

Data Sources:
Hydrology data from WA. State Dept. of Natural Resources (10/2007). Transportation information from Kitsap County.
Digital Elevation Model created from a variety of sources, by David Finlayson, School of Oceanography, University of Washington
<http://www.ocean.washington.edu/data/pugetsound/>
Please support public access to publicly funded data so that projects like this can be made possible.

Scale of Miles
Map Date: April 28, 2010

- Pier, Dock, & Floats**
- Drift Cells
 - Low
 - Moderate
 - High
 - Railroad
 - Streams
 - Cities
 - Military Lands
 - Tribal Lands
 - Urban Growth Areas
 - Waterbodies
 - Ferry Terminal
 - Ferry Route

