



kitsap
2044

Growing for a Better Tomorrow

KITSAP COUNTY Comprehensive Plan UPDATE

Kitsap County
October 3, 2023



GROWTH MANAGEMENT ACT

Many goals to “balance”

- Urban Growth
- Reduce Sprawl
- Transportation
- Housing
- Economic Development
- Property Rights
- Permits
- **Climate Change**
- Resource Lands
- Open Space/Recreation
- Environment
- Citizen Participation
- Public Facilities/Services
- Historic Preservation
- Shorelines

No priority order. Balancing based on “local circumstances”.

New GMA Planning Goals

HB 1181 – amend RCW 36.70A.020 to include **climate change and resiliency**

Aligns with VISION 2050 – reduce greenhouse gas emissions and prepare for impacts

Aligns with Countywide Planning Policies – address climate change

Key focus of 2024 Kitsap County Comprehensive Plan Update – establish foundation



Climate Change

Studies Completed - Planning for Climate Change

Kitsap County Climate Change Resiliency Assessment, 2020

Green House Gas Emissions Inventory and Analysis, 2022

New Climate Change Chapter

Climate Resilience and Adaptation

Ongoing process of anticipating, preparing for, and adapting to changes in climate and minimize negative impacts to infrastructure, natural systems, and communities.

Greenhouse Gas Emissions Reduction

Taking action to reduce or eliminate local greenhouse gas emissions.

Climate Resilience and Adaptation

Emergency preparedness and response

Public health

Economy

Cultural Resources

Public Infrastructure

Land Use and Development

Hydrology and Hydrogeology

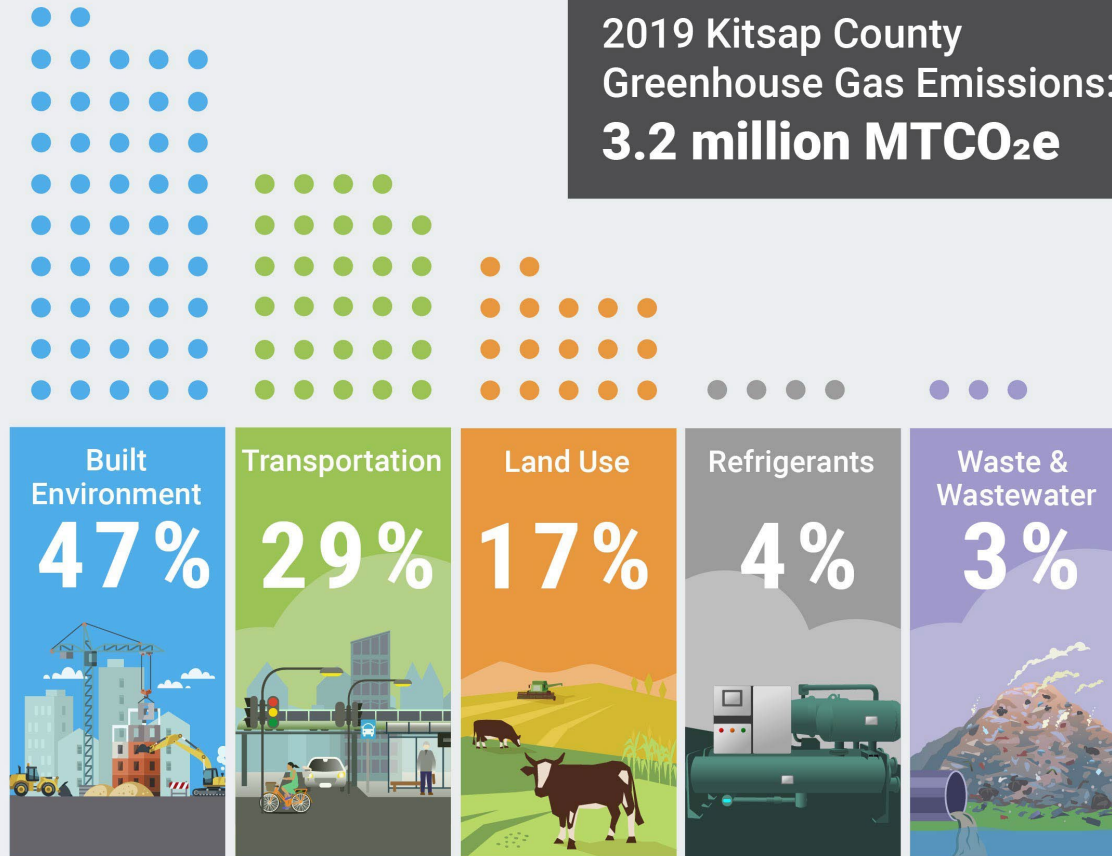
Geologic and Natural Hazards

Habitat

Fire

WHERE DO OUR EMISSIONS COME FROM?

2019 Kitsap County
Greenhouse Gas Emissions:
3.2 million MTCO₂e



Greenhouse Gas Emissions Reduction

Building energy

Transportation

Tree loss

Solid Waste



Climate Change Chapter

CLIMATE RESILIENCE AND ADAPTATION

- Enhance emergency preparedness, response, and recovery efforts to mitigate risks.
- Public services, utilities, and infrastructure are resilient to impacts of climate change.

GREENHOUSE GAS EMISSIONS REDUCTION

- Reduce greenhouse gas emissions from on-road passenger and freight vehicle miles traveled.
- Minimize tree loss due to development and preserve existing tree canopy.

REVISED UPDATE SCHEDULE

LEGEND	April 2023		December 2023		April 2023		August 2024		December 2024	
Board Hearings	Preliminary Alternatives Selected		Draft EIS, Comp Plan, CFP and Regulations Released		Preferred Alternative Selected		Final EIS, Comp Plan, Capital Facilities Plan and Regulations Released		Board Approval of Final Documents	
Document Release										

Due date is December 31, 2024.

MORE INFORMATION?

Kitsap County Comprehensive Plan

Email: compplan@kitsap.gov

Phone: (360) 337-5777

Website: Kcowa.us/compplan



kitsap
2044

Growing for a Better Tomorrow