



**Legend**

**Kitsap County Zoning Designations**

Rural Wooded (1 DU/20 Ac)

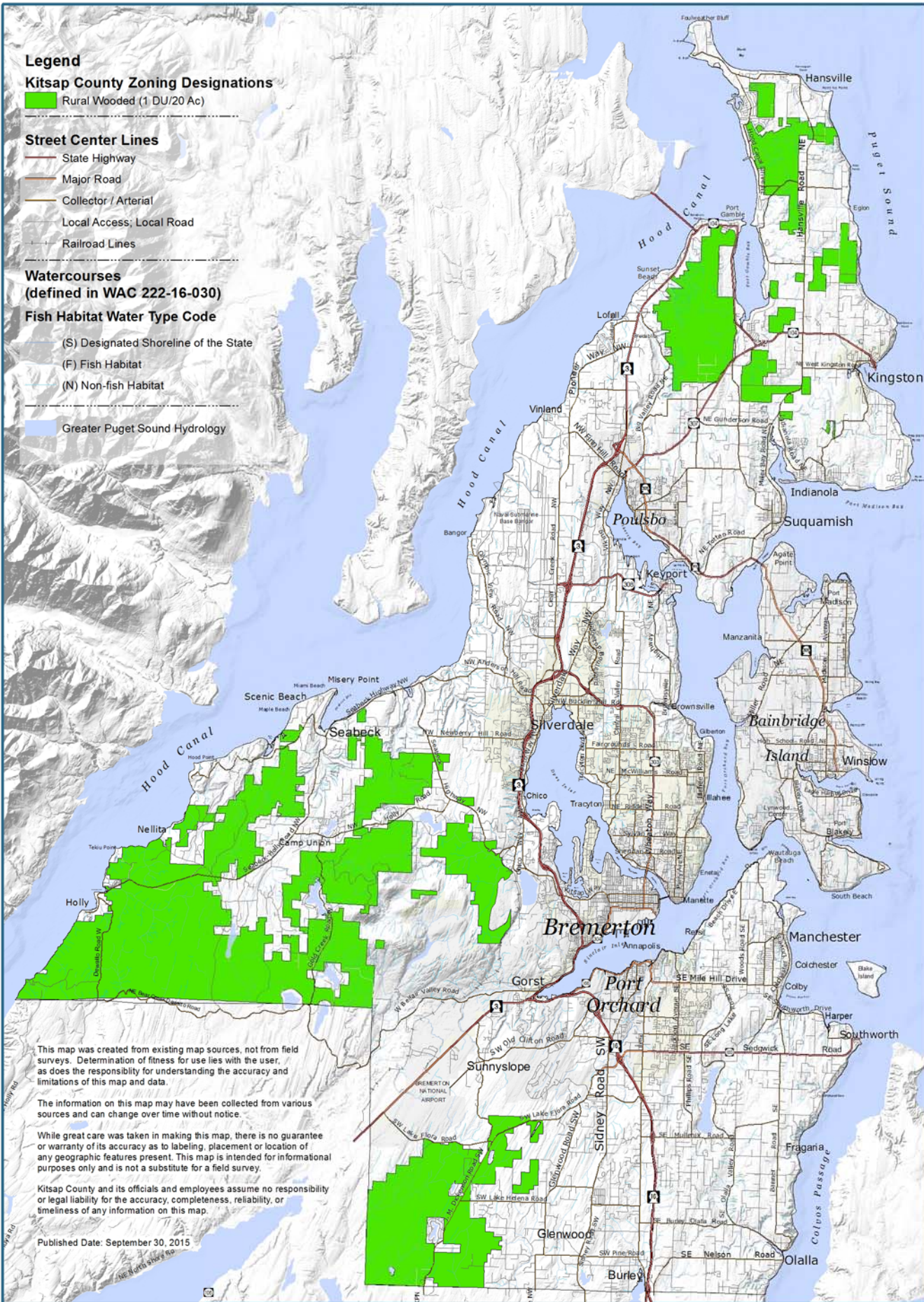
**Street Center Lines**

- State Highway
- Major Road
- Collector / Arterial
- Local Access; Local Road
- Railroad Lines

**Watercourses  
(defined in WAC 222-16-030)**

**Fish Habitat Water Type Code**

- (S) Designated Shoreline of the State
  - (F) Fish Habitat
  - (N) Non-fish Habitat
- Greater Puget Sound Hydrology



This map was created from existing map sources, not from field surveys. Determination of fitness for use lies with the user, as does the responsibility for understanding the accuracy and limitations of this map and data.

The information on this map may have been collected from various sources and can change over time without notice.

While great care was taken in making this map, there is no guarantee or warranty of its accuracy as to labeling, placement or location of any geographic features present. This map is intended for informational purposes only and is not a substitute for a field survey.

Kitsap County and its officials and employees assume no responsibility or legal liability for the accuracy, completeness, reliability, or timeliness of any information on this map.

Published Date: September 30, 2015

**Kitsap County Zoning  
Rural Wooded (1 Dwelling Unit per 20 Acres)**

