

KITSAP COUNTY

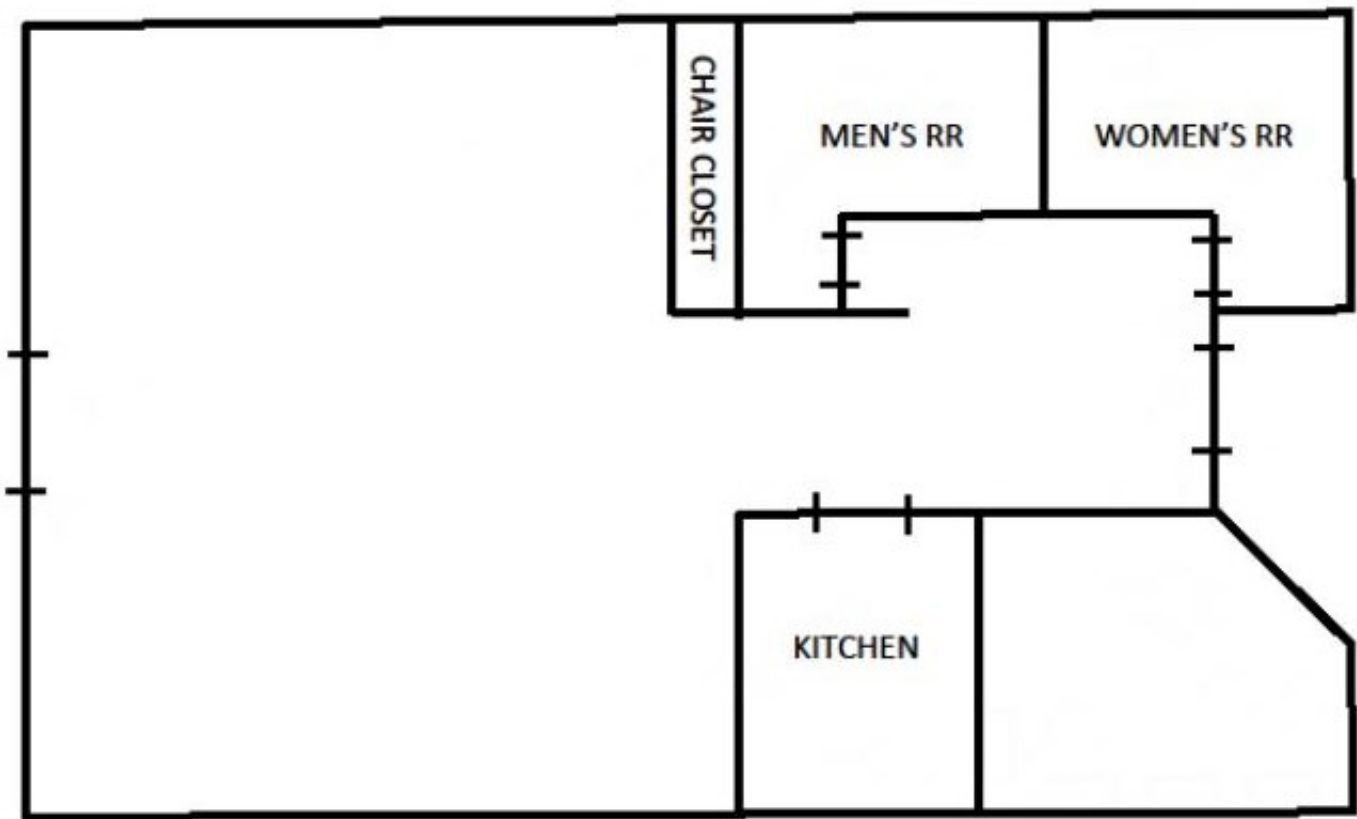
Parks Department

Mailing: 614 Division Street, MS-1 | Port Orchard, WA 98366 | Physical: 1195 NW Fairgrounds Rd | Bremerton, WA 98311

www.kitsapgov.com/parks | Phone: 360-337-5350

Facility Fact Sheet | Long Lake Community Center

LONG LAKE COMMUNITY CENTER



| SIZE | CAPACITY |
|----------|----------|
| 1,200 SF | 75 |

| INCLUDED IN RENTAL | | | | |
|--|---|---|--|---|
| <u>CHAIRS:</u> 80 white foldable chairs | <u>TABLES</u> 13 (8ft) tables—each seats 8 | <u>KITCHEN</u> Refrigerator, stove, micro-wave, sink | <u>CLEANING SUPPLIES</u> Brooms, dustpan, trash bags, spray bottle of disinfectant, and sponges are provided for cleanup. Renter is responsible for all other cleaning supplies such as dish soap, towels, etc. | <u>MISC</u> Large parking lot, close to playground, lake view from facility, ball fields nearby. |