

Resolution Number 057

**A RESOLUTION RESCINDING RESOLUTION NUMBER 120-2013,
ADOPTING THE HANSVILLE GREENWAY & WILDLIFE CORRIDOR
STEWARDSHIP GUIDELINES, DATED OCTOBER 20, 2012
AS POLICY AND OPERATIONAL GUIDELINES FOR THE COUNTY-OWNED
HANSVILLE GREENWAY PROPERTIES**

WHEREAS, Kitsap County acquired approximately 130 acres adjoining Buck Lake Park using Conservation Futures and Washington Wildlife and Recreation Program grant funds Administered by the Washington State Interagency for Outdoor Recreation: and

WHEREAS, this property was acquired as wildlife habitat with low impact trails as a secondary use, consistent with the recommendations of the Kitsap County Open Space Council and with recommendations in the County's Comprehensive Park, Recreation and Habitat Plan; and

WHEREAS, the Hansville Greenway Stewardship Committee, composed of Hansville community members, Kitsap County Parks staff, and Natural Resources Conservation Service staff, was formed to determine goals, policies, procedures, work programs, and assign responsibilities for that work, in the form of a stewardship plan for the Hansville Greenway properties; and

WHEREAS, the Kitsap County Open Space, Parks and Greenways Advisory Council did, at their regularly scheduled meeting on October 22, 1997, unanimously recommend to the Board of County Commissioners that the Hansville Greenway/Buck Lake Stewardship Manual be adopted as County policy, maintenance and operational guidelines for management of the Hansville Greenway lands under County ownership; and the Board of County Commissioners adopted the Hansville Greenway/Buck Lake Stewardship Manual as County Policy under Resolution 022-1998 on January 26, 1998; and

WHEREAS, a determination of environmental non-significance has been declared for the Hansville Greenway/Buck Lake Stewardship Manual, and the comment and appeal period for that determination ended on January 2, 1998; and

WHEREAS, the Hansville Stewardship Committee has completed the Hansville Greenway & Wildlife Corridor Stewardship Guidelines for the Hansville Greenway which addresses the elements listed above; and has presented said guidelines to the Parks and Recreation Advisory Board at the January 16, 2013 meeting; and upon their review has given unanimous support for said document, attached; and

WHEREAS, the Hansville Greenway & Wildlife Corridor Stewardship Guidelines for the Hansville Greenway shall wholly supersede and replace the

Hansville Greenway/Buck Lake Stewardship Manual adopted under Resolution 022-1998 on January 26, 1998.; and

NOW, THEREFORE, BE IT RESOLVED, by the Board of County Commissioners that the Hansville Greenway & Wildlife Corridor Stewardship Guidelines for the Hansville Greenway is hereby adopted to determine goals, priorities, procedures, work programs, assigned responsibilities and other covered matters for the Hansville Greenway park properties; as well as, serve as a model for and guidance concerning stewardship plans for other County-owned properties under the jurisdiction of the Kitsap County Parks Department.

APPROVED AND ADOPTED THIS 14 day of April, 2014

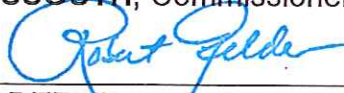
**Board of County Commissioners
Kitsap County Washington**



CHARLOTTE GARRIDO, Chair

NOT PRESENT

LINDA STREISSGUTH, Commissioner



ROBERT GELDER, Commissioner

Attest:



Dana Daniels, Clerk of the Board



Stewardship Guidelines

Prepared by

Hansville Greenway Association

And

Kitsap County Department of Parks and Recreation

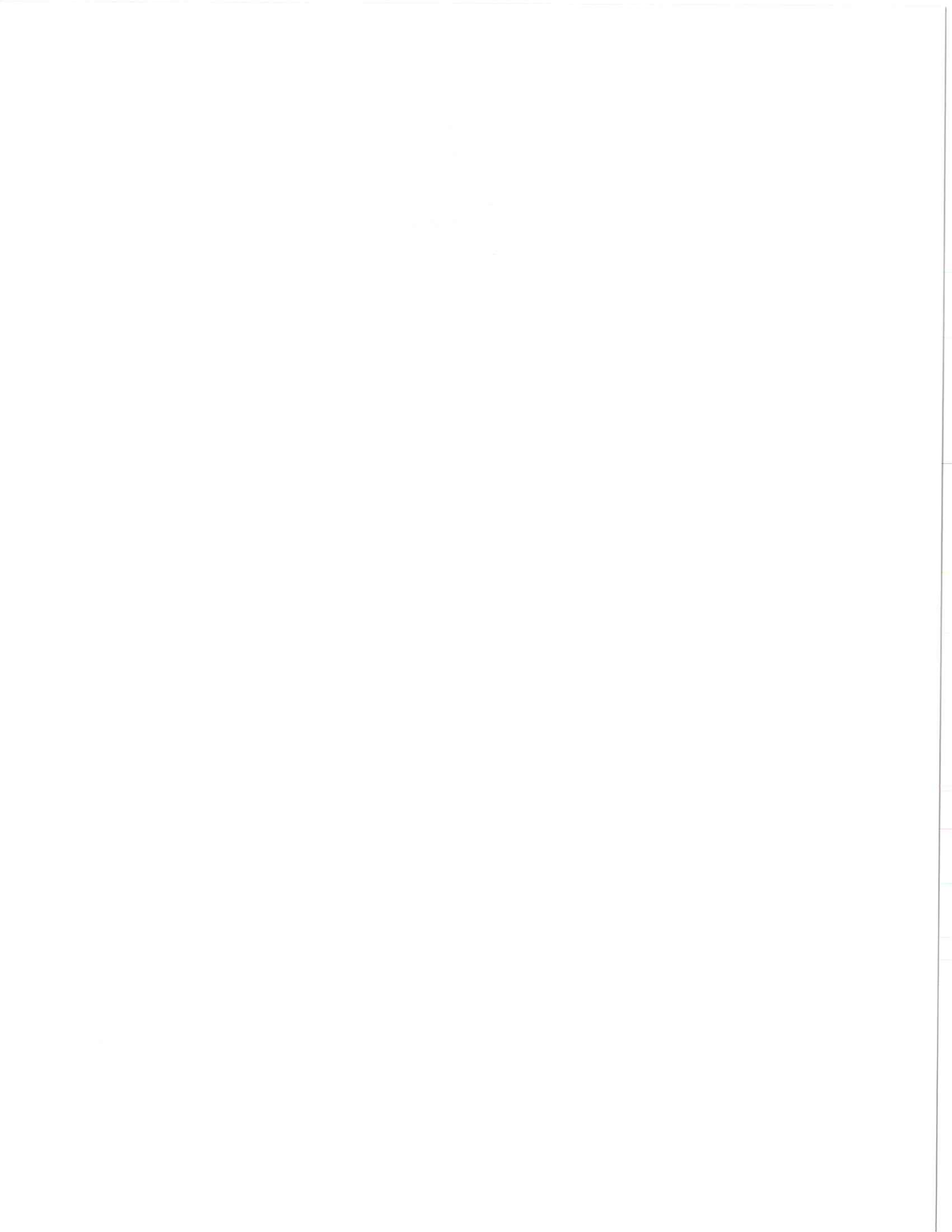


Table of Contents

1. Hansville Greenway - A True Kitsap County Gem
2. Stewardship - What's It All About?
 - A. Stewardship Goals
 - B. Stewardship Roles
3. Guidelines for Stewardship
 - A. Monitoring and Reporting Procedures
 - B. Enforcement
 - C. Management and Maintenance Policies
4. Hansville Greenway Background
5. Greenway Description
 - A. Location and Features
 - B. Trail and Conservation Easements
 - C. Conservation Significance
 - D. Recreational Significance
 - E. Educational Significance
6. Other Policies and Procedures
 - A. Natural Resource Protection
 - B. Visitor Activities
 - C. Visitor Amenities
 - D. Educational Opportunities
7. Scope and Intent of Guidelines

Figures:

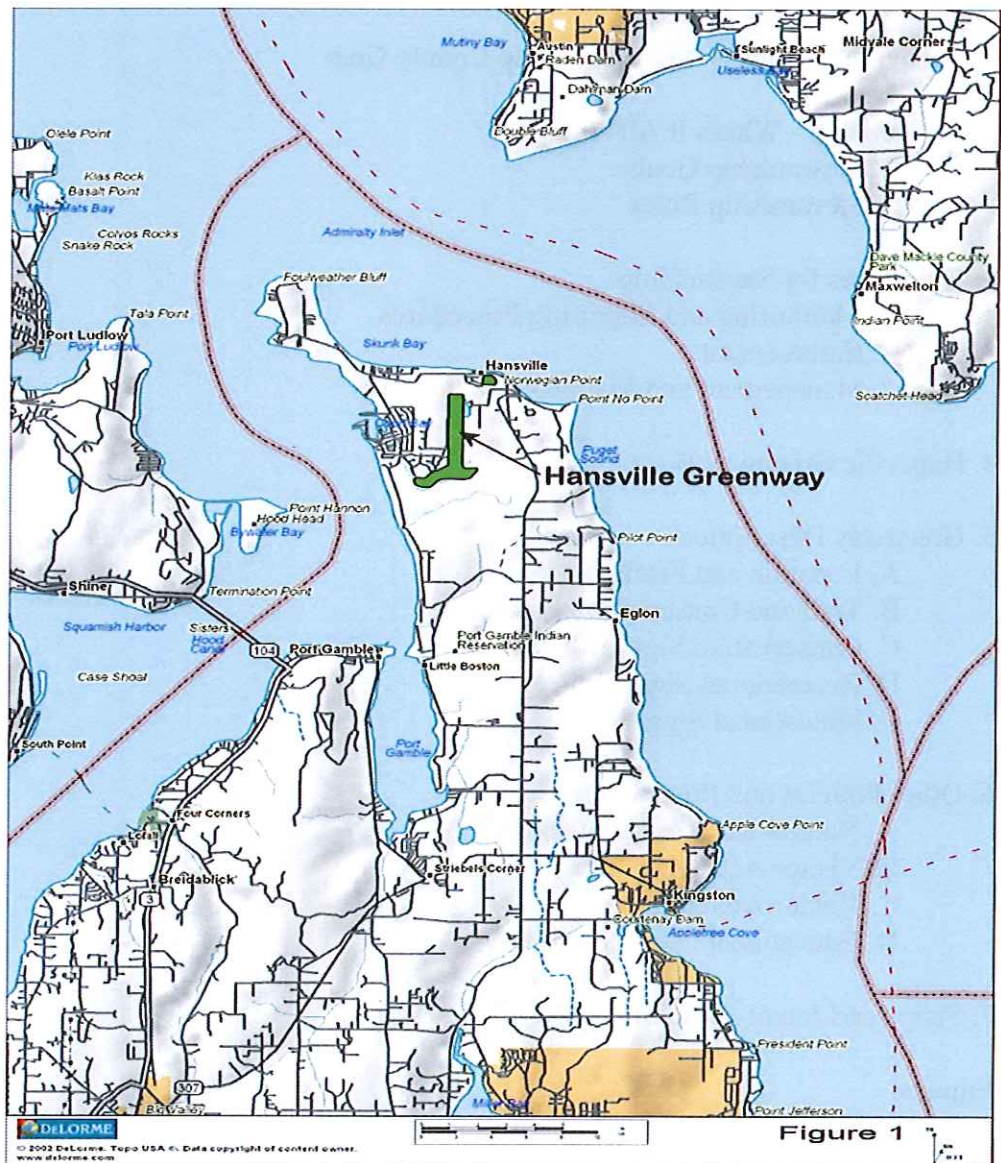
1. Hansville Greenway Location Map
2. Hansville Greenway and Surroundings Map
3. Hansville Greenway Stewardship Areas Map

1. The Hansville Greenway – a True Kitsap County Gem

The Hansville Greenway and Wildlife Corridor nature preserve and wildlife sanctuary is one of Kitsap County's great treasures (see Figure 1). Located at the north end of the Kitsap Peninsula near the town of Hansville, the 265-acre greenway and its associated trail and conservation easements include:

- Diverse habitats that support a wide variety of wildlife ranging from bear and deer to coyotes and beavers and include nearly 100 species of birds
- 7.5 miles of trails through second- and third-growth forest that are used primarily by hikers, along with some horseback riders and bicyclists.

Figure 2 shows current Greenway trail locations and other features and surroundings. Details about the Greenway, including park amenities, policies and procedures, are provided in Sections 5 and 6 of these Guidelines. Reference (a) is a detailed description of the natural resources and potential management actions for each stewardship area, prepared by Ken Drechsel of the Kitsap Conservation District.



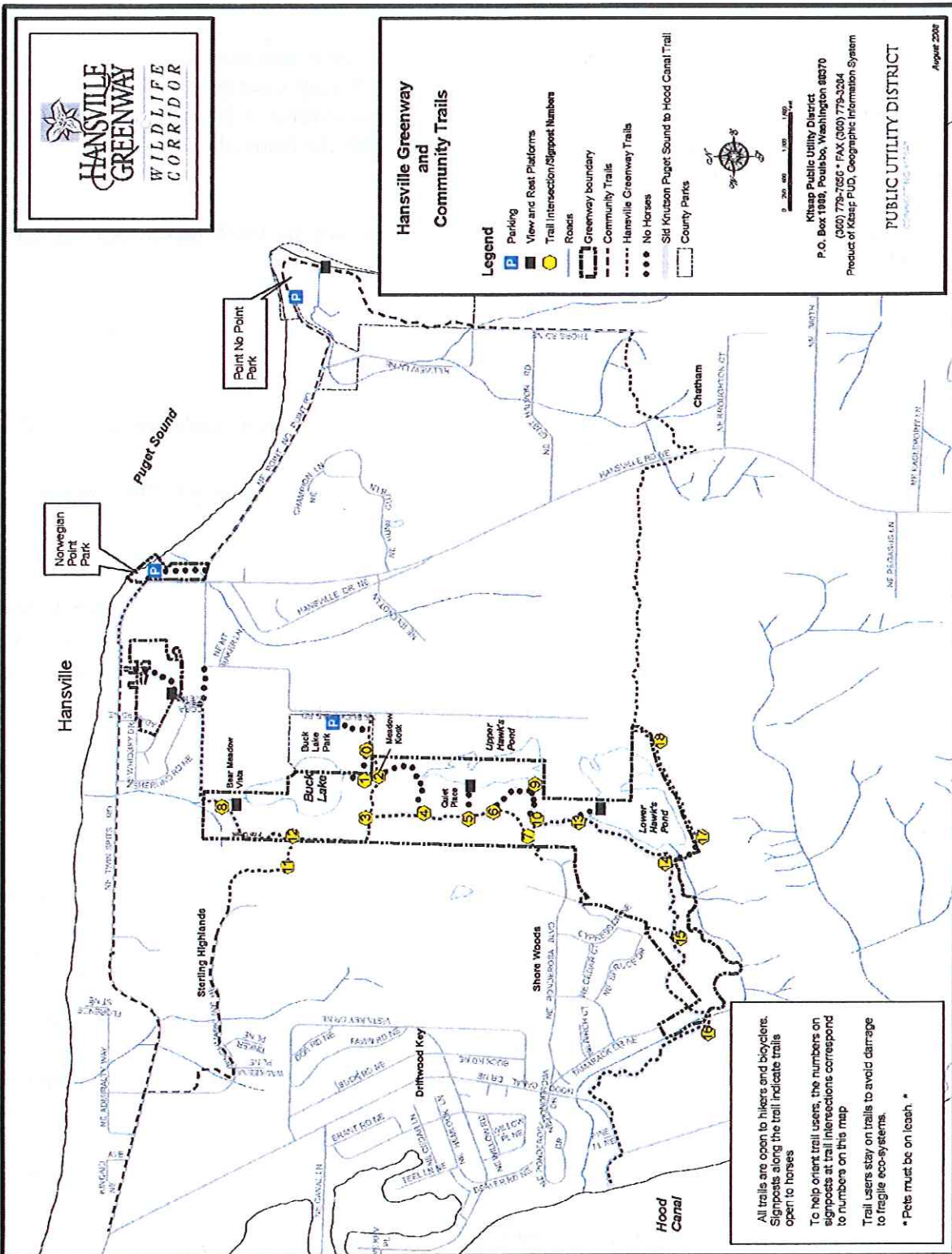


Figure 2. Hansville Greenway and Surroundings

2. Stewardship – What’s It All About?

Stewardship, put simply, is the care and management of natural areas and man-made amenities in public spaces. For the Hansville Greenway, this role is shared by the Kitsap County Department of Parks and Recreation ("KC Parks") and the Hansville Greenway Association ("HGA"), an unincorporated association of community volunteers that led the effort to establish the Hansville Greenway and continues to provide stewardship for the Hansville Greenway.

The purpose of these Guidelines is to define roles for KC Parks and the HGA and to provide guidelines for stewardship of the Hansville Greenway.

A. Stewardship Goals

The stewardship goals for the Hansville Greenway are to:

- Protect and preserve natural areas and wildlife
- Provide for generally passive stewardship so that the Hansville Greenway lands evolve naturally
- Maintain a recreational trail system consistent with the first two goals
- Provide opportunities for education and awareness programs about the natural features of the Hansville Greenway and the benefits of preserving wildlife and natural areas

The primary goal is to protect wildlife and natural areas while providing compatible, passive recreation and educational opportunities. The intent is to maintain the area as a wildlife sanctuary and nature preserve while providing for human involvement as unobtrusively as possible. All policies and procedures for the stewardship program are to be consistent with this stated intent and these goals.

B. Stewardship Roles

HGA Functions:

HGA will have the following stewardship functions, subject to KC Parks' oversight:

- Recruit and organize volunteers to carry forward the preservation, restoration, maintenance and development of the Hansville Greenway
- Seek corporate and individual donations and organize and assist in the identification of possible grant opportunities
- Organize work parties to build and rehabilitate trails, control to the extent reasonable invasive exotic plants and carry out other projects consistent with the stewardship goals
- Establish designated areas within the Hansville Greenway to organize and focus stewardship functions
- Seek approvals and permissions as may be required or appropriate under applicable easement documents
- Provide opportunities for ADA accessibility to designated portions of the Hansville Greenway trail system
- Manage usage of the trail system by people and pets
- Operate a volunteer “eyes and ears” program for monitoring visitor use and natural conditions in the Greenway. Report inappropriate visitor use and safety issues to KC Parks or Kitsap County law enforcement as appropriate
- Assist in providing educational opportunities using the Hansville Greenway

KC Parks Functions:

- Make available staff and resources to respond to emergencies, public safety concerns or other stewardship needs that are beyond the capabilities or resources of HGA
- Include in Kitsap County's capital facilities plan funding for capital improvements, property acquisitions or major projects supporting the stewardship goals
- Provide staff assistance, equipment and other resources to assist HGA volunteers where appropriate
- Provide legal assistance and representation as may be appropriate to the stewardship roles of HGA and KC Parks
- Provide insurance coverage to HGA volunteers consistent with overall Kitsap County policies
- Provide overall supervision of and guidance to HGA concerning the functions allotted to it
- Assist and process grant applications identified as useful to and consistent with the stewardship goals

Joint Functions of KC Parks and HGA:

- Property and easement acquisition
- Site-planning elements and capital improvements
- Policy decisions on resource management and usage of the Hansville Greenway
- Identifying and pursuing grants that may be advantageous to the Hansville Greenway

Performance of Functions:

- HGA will perform its functions as available volunteers and financial resources allow. Likewise, KC Parks' performance of its functions will be subject to staffing and budgetary constraints.

3. Guidelines for Stewardship

The Hansville Greenway is divided into 17 Stewardship Areas (see Figure 3) and volunteer stewards are assigned to each area. The primary role of an area steward is to periodically monitor the steward's assigned area for appropriate visitor use, trail conditions, wildlife presence and usage, safety hazards, invasive plants, condition of plants and habitat, boundary encroachment, and vandalism. Guidelines for the monitoring process are outlined below.

A. Monitoring and Reporting Procedures

An area steward should become familiar with the trails through the steward's area. A steward is encouraged to depart from the trail proper from time to time and as conditions and time constraints allow to observe conditions within the steward's area. Each steward is further encouraged to become familiar with the resources within the steward's area as described in reference (a).

Area stewards are encouraged to monitor their area at least monthly, but each may determine the frequency of monitoring inspections based on knowledge of the circumstances surrounding the area, i.e. management objectives, problems, restrictions, status of restoration, amount of public use, etc. Any HGA volunteer is requested to observe conditions within the Hansville Greenway traversed by the volunteer, whether or not within a stewardship area assigned to that volunteer, and to report on the observations to the extent necessary or appropriate.

Following is a list of the kind of items that might be observed by a steward during a monitoring inspection:

- Possible safety hazards
- Pets running free or off-leash even if accompanied by humans
- Trail sign condition
- Litter
- Vandalism
- Timber or plant theft (wood, vegetation removal)
- Trail condition
- Known invasive plant species
- Encroachment by adjacent property owners
- Erosion
- Overuse
- Camping (not permitted)
- Fires (not permitted)
- Off-trail activities or use by humans
- Usage by motorized vehicles (not permitted)
- Inappropriate use of trails (e.g., horses on pedestrian trails, off-trail use and creation of unsanctioned trails.)

After every monitoring inspection, a steward will communicate by email or other means to the Stewardship Manager that includes the substance of the following:

- Date and time of visit
- Route covered
- Number of people and pets encountered
- Type of human activity (biking, horseback riding, jogging, birding, etc)
- Identifiable wildlife observed
- Trail condition and blockages
- Possible safety hazards
- Other relevant information

The Stewardship Manager will review the reports and forward them to the other stewards and other people as appropriate. If an emergency situation within the Greenway becomes known to HGA volunteer, whether or not an officer or a steward, that volunteer should contact the Stewardship Manager and KC Parks or other appropriate governmental agency. In the case of a non-emergency condition which cannot be resolved by HGA volunteers, one or more officers of HGA shall consult and determine if and the extent to which assistance or action by KC Parks or other Kitsap County agencies is necessary or appropriate.

The HGA Volunteer Coordinator will enter the stewards' hours into the on-line county volunteer database, or individual stewards may do that on their own.

B. Enforcement

Area stewards are not expected to enforce County ordinances or other regulations and the policies, guidelines and procedures promulgated for the Hansville Greenway; however, area stewards should remind visitors of such rules if they are not in compliance or note the need for enforcement in their email reports. They should not seek to take enforcement action on their own or become embroiled in arguments or confrontations with visitors. Kitsap County is responsible for enforcement.

C. Management and Maintenance Policies

One of the stewardship goals is to maintain the trail system. HGA's Trail Maintenance Task Manager coordinates trail maintenance activities. Guidelines for trail maintenance are outlined below.

Minimal native vegetation, may be removed for safety reasons, or for construction or maintenance of trail facilities. The value of dead snags to wildlife should be taken into account when considering removing them as "hazard trees". Trimming of vegetation to maintain or enhance views from observation platforms or to permit convenient passage on trails is authorized but should be minimized.

HGA volunteers may cut downed trees, standing trees 6 inches, or less, in diameter, and brush and low-growing vegetation if carried out consistent with the above principles. HGA volunteers are not authorized to fell standing trees more than 6 inches in diameter. Volunteers who perceive a need for a tree to be felled, whether as a possible hazard or for other reasons, are expected to

first communicate that information to an appropriate officer of HGA. That officer may make a preliminary evaluation of the need to further communicate with KC Parks on the subject. It will be up to KC Parks to make the determination on whether to fell the tree, and how it should be accomplished.

Before any relocation or improvement of (other than routine maintenance) trail facilities within an easement (where the Hansville Greenway is granted limited rights on property owned by another) appropriate HGA volunteers will consult the applicable easement documents to determine what steps need to be taken in order to carry out the contemplated action. If in doubt, the assistance of legal counsel shall be sought through KC Parks. No cutting of timber – standing or down – or removal or trimming of vegetation outside the boundaries of the trail easement area should occur without first obtaining the express written permission of the landowner. In any case where permission, consent or approval of the landowner is required or obtained, evidence of it is to be obtained and preserved by HGA.

While the stewardship goals contemplate that the lands within the Hansville Greenway will be managed passively, rather than actively, certain exceptions to that overall goal are intended and expected. The meadow areas near the Buck Lake entrance (in Stewardship Area 8) and at the north end of Buck Lake (in Stewardship Area 3) will continue to be maintained as meadow habitat to foster diversity of wildlife and habitat within the Hansville Greenway. If HGA recommends and KC Parks concurs, limited tree removal may be done by KC Parks and plantings may be undertaken for the purposes of providing screening, enhancing wildlife habitat and discouraging the establishment or spread of blackberries or other non-native invasive vegetation.

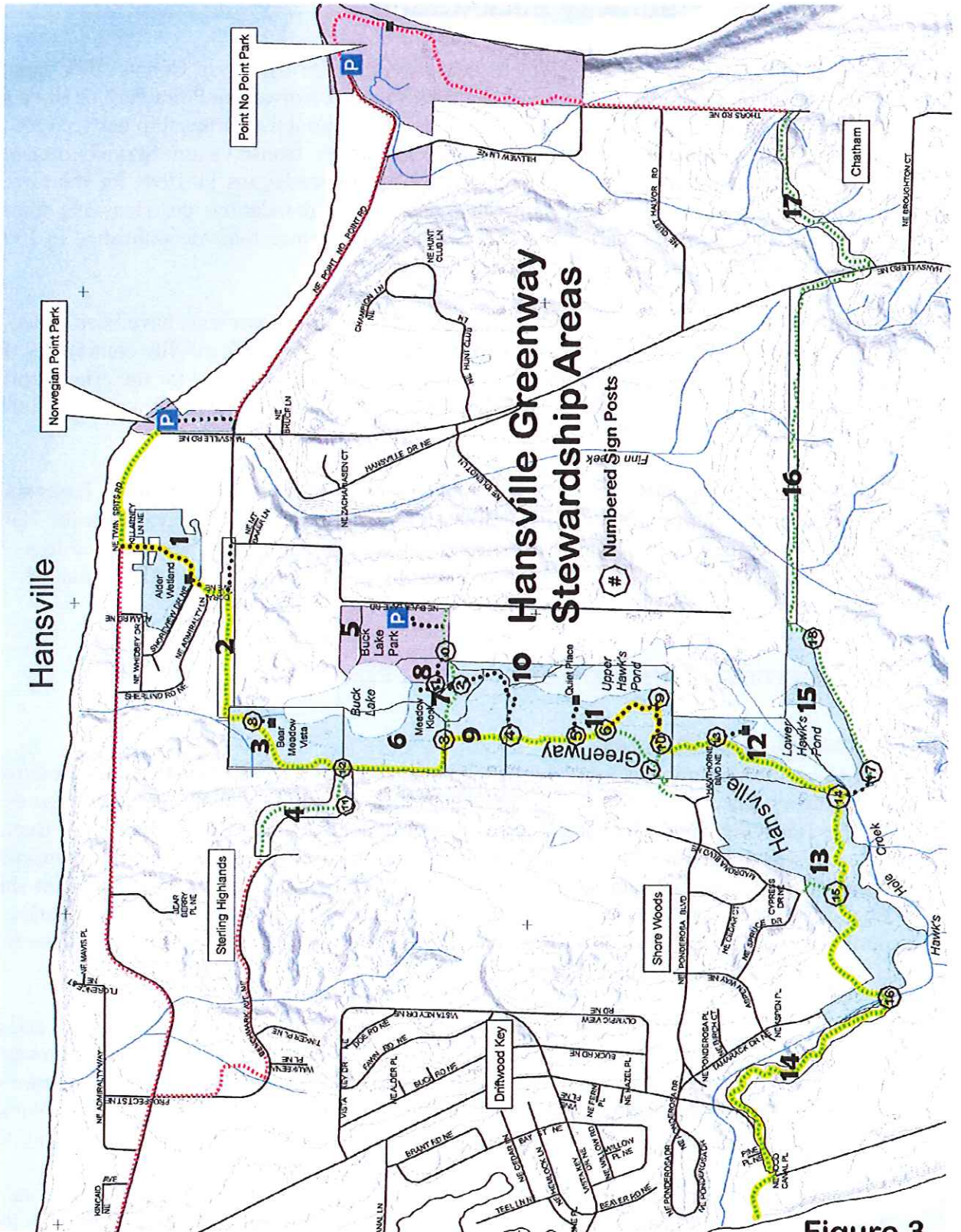


Figure 3

4. Hansville Greenway Background

The Hansville Greenway is a corridor of land owned in fee by Kitsap County, trail easements, and conservation easements reaching from Puget Sound at Norwegian Point Park to Hood Canal. The Hansville Greenway was created in the mid-1990's through a partnership between KC Parks and Hansville community members. Natural Resources Conservation Service prepared an inventory of natural resources and management recommendations in 1996 for the Greenway properties as they then existed. Using that report as a foundation, the Hansville Greenway Committee and KC Parks staff prepared a Stewardship Manual that was published in 1997 and adopted by Kitsap County Board of Commissioners.

Since then, more than 120 acres of land and two miles of trail easements have been added to the Hansville Greenway, fulfilling much of the original vision of the Hansville community. Kitsap Conservation District staff have updated the natural resource inventory for the original property and have expanded it to include the additional lands and easement areas. That report is reference (a).

HGA has acted as the steward of the Hansville Greenway in cooperation with KC Parks since the County acquired the property in 1995. Both HGA's stewardship experience with the Hansville Greenway and the major expansion in Hansville Greenway properties have pointed to a need to readdress the goals, policies and procedures first addressed in the 1997 manual. These Guidelines are the result.

5. Greenway Description

A. Location and Features

The Hansville Greenway is located near the north end of the Kitsap Peninsula, just southwest of the unincorporated town of Hansville and adjacent to Buck Lake County Park (see Figures 1 and 2). The Hansville Greenway consists of a 245-acre tract extending from just north of Buck Lake two miles to the south and west, a separate 20-acre tract close to the village of Hansville, 2.5 miles of trail easement, and 8.6 acres of conservation easement. It includes the west shore of Buck Lake, most of two beaver ponds (Upper and Lower Hawk's Ponds), other wetlands, and a portion of the stream called Hawk's Hole Creek that flows from the southerly beaver pond (Lower Hawk's Pond) to Hood Canal.

Most of the land is second- and third-growth forest, primarily Douglas fir, red alder and cedar. Approximately 5 miles of trails run through the tracts comprising the Hansville Greenway lands and another 2.5 miles are on trail easements across private property. The main entrance to the trail system is at Buck Lake County Park. While not part of the Greenway proper, Norwegian Point County Park serves as the Puget Sound terminus of the Hansville Greenway trail system.

HGA stewardship does not extend to the portions of the Sid Knutson Puget Sound to Hood Canal Trail west of Hood Canal Drive to the Hood Canal Place road end and along Twin Spits Road in

Hansville, or to other trail markings on Figure 3 within Buck Lake Park or Norwegian Point Park.

B. Trail and Conservation Easements

Outside the core Kitsap County-owned lands are a number of easements. They afford to the Hansville Greenway certain irrevocable rights through and to lands owned by others. They are briefly described below.

Stewardship Area 14 is a 20 foot wide trail easement from Hood Canal Drive, on the west, to the middle of Hawk's Hole Creek, north of Signpost 16.

A 700 foot section of 20 foot wide trail easement is incorporated into Stewardship Area 13 crossing over private lands in a gap between trails within the lands in Stewardship Area 13.

The trail section in Stewardship Area 15 along the south shore of Lower Hawk's Pond, from Signpost #17 to Signpost #18 is a 60 foot wide trail easement on a former logging road. The land north of the road is part of the Hansville Greenway land, but the road and property south of the road are privately owned.

Three easements comprise most of Stewardship Area 16. Two of these easements combine to essentially grant the right to a trail within a 100 foot wide strip running from Lower Hawks Pond on the west to Hansville Road on the east. These easements also have a conservation aspect which, in general, commits the landowner to maintaining the 100 foot wide strip in a natural state. The third easement is a 20 foot wide trail easement generally paralleling Hansville Road and running southerly from the easements described earlier a distance of approximately 1,040 feet.

All of Stewardship Area 17 is a 40 foot wide trail easement through the Chatham plat, from Hansville Road to Thors Road.

An easement which is an extension of Stewardship Area 11 runs from Ponderosa Blvd to the westerly Hansville Greenway boundary. It is a strip 100 feet wide north of and parallel to the plat of Shorewood. This easement provides for a conservation amenity within the 100 foot wide strip and allows a 10 foot wide trail easement to be located within the strip.

Stewardship Area 4 is a 20 foot wide trail easement from the Greenway boundary near Signpost 12 to Benchmark Avenue in Sterling Highlands. This easement remains to be formalized either in whole or in part.

C. Conservation Significance

The diversity of habitat types in the Hansville Greenway supports a wide variety of species. Habitat types include forest, wetland, lake shoreline, stream corridor and meadow. The Hansville Greenway is home to bear, deer, coyotes, river otters, beaver and many smaller mammals, reptiles, amphibians and insects. Nearly 100 species of birds have been observed in the Hansville Greenway. Reference (a) lists the plants and animals observed or expected to occur in the

Hansville Greenway. The Hansville Greenway is typical of undeveloped Puget Sound lowland forests which have been managed for timber since the late 19th Century.

The Hansville Greenway land is bordered on the southwest by a high-density housing development, on the west by a 90 acre parcel logged in 2009 with a "30% leave," on the northwest by an 89-parcel, medium density development, on the east by 2.5 acre parcels with homes, and on the south by 1,600 acres of timberland currently owned by Pope Resources. Approximately two-thirds of the shoreline of Buck Lake is within the Hansville Greenway. The Hansville Greenway provides a nature preserve and wildlife sanctuary in the midst of this development.

D. Recreational Significance

One of the stewardship goals is to maintain a system of trails that provides access through the forests and meadows for passive recreation such as hiking, biking, horseback riding and wildlife observation, and affords links to the surrounding neighborhoods.

The vast majority of visitors to the Hansville Greenway are walkers, although some horseback riders and mountain bikers use the trails. All of the trails are open to bikers, but signs along the trail indicate trails sections that are closed to horses. Five view platforms provide rest areas and sites for wildlife observation.

E. Educational Significance

The varied habitat areas and viewing platforms provide education opportunities for students, local residents, and visitors. North Kitsap School District has conducted an environmental education program at the Hansville Greenway for elementary school students since 1996. In 2008 the Buck Lake Native Plant Garden Association established a native plant garden in a portion of Buck Lake Park, adjacent to the Hansville Greenway. The garden provides an informative walk among labeled native plants, many of which are present in the Hansville Greenway.

6. Other Policies and Procedures

A. Natural Resource Protection

The primary goal for stewardship of the Greenway is to protect wildlife and preserve natural areas while providing compatible, passive recreation and educational opportunities. The intent is to maintain the area as a wildlife sanctuary and nature preserve while providing for human involvement as unobtrusively as possible. Moreover, the natural areas will generally be passively managed with a few exceptions noted earlier, and will be left to evolve and develop naturally. Aggressive enhancement and management of natural resources is neither contemplated nor desired. All policies and procedures implemented will be consistent with this goal.

Commercial logging, pre-commercial thinning, commercial tree thinning, and commercial brush harvesting will not be allowed within the Greenway. The occasional felling of individual trees for non-commercial purposes and the removal of other vegetation are recognized as exceptions to the foregoing declaration of overall policy if carried out as described in Section 3C.

Trails, visitor amenities and visitor activities will be managed to maintain large, connected areas for wildlife and to minimize disturbance to wildlife.

B. Visitor Activities

Acceptable Uses – Acceptable trail uses include hiking, biking, horseback riding, nature photography, bird watching and environmental education.

Prohibited Activities – Prohibited Greenway activities include motorized vehicle riding/driving, paint ball, competitive events, hunting, shooting, camping, fires, and fireworks.

Dogs and Leashes – Unrestrained dogs are known to have adverse impacts on wildlife and plants. Many Hansville Greenway users wish to be accompanied by their dogs. Dog owners are expected to keep their dogs on a leash in order to respect other park visitors and to respect the goal of protecting and preserving natural wildlife and plants. Dog owners are also expected to pick up dog waste and pack it out of the Greenway and dispose of it in regular garbage containers. Plastic bags are available from Mutt-Mitt dispensers at many Greenway access sites.

Off-Trail Use/Unsanctioned Trails – To avoid damage to fragile eco-systems and minimize adverse impacts to wildlife, trail users must stay on the trails and not create new trails. Stewards monitor and discourage off-trail uses and report the creation of unsanctioned trails. Access trails from adjacent private parcels connecting to Hansville Greenway trails within county-owned property are not allowed, except as sanctioned by HGA and KC Parks. Access trails from private property to Hansville Greenway trails across easements are discouraged and no identification of or signage for any such trail will occur.

Geocaching – Geocaching is allowed with the requirements that caches must be within 10 feet of an official Greenway trail, accessible from the trail without disturbing vegetation, at least 500 feet apart, and clearly identified on the outside of the container as a geocache. A geocache which results in the creation of an unsanctioned trail must be relocated or removed.

Vandalism – HGA volunteers will endeavor to repair vandalism and graffiti quickly in order to discourage repeated occurrences.

C. Visitor Amenities

Trail maps are provided in printable, electronic format on the KC Parks and Hansville community websites, and in hardcopy at three different trail access points. Hansville Greenway kiosks with large maps are located at Norwegian Point Park, the Greenway entrance in Buck Lake Park, and the meadow near the entrance from Buck Lake County Park (see Figure 2 for trail locations.)

Numbered signposts at trail intersections correlate to numbers on the maps to help trail users find their way. The posts have signs with direction and distance to Greenway locations. Signs will be kept to a minimum and designed to be helpful for direction-finding while being unobtrusive and easily maintained.

Map kiosks, signposts, benches and view platforms are and will be designed and built to blend well with the natural surroundings, yet be substantial enough to withstand weathering and visitor use over the long term. They are and will be sited to minimize their impact on native vegetation and wildlife.

Local fire and rescue stations have copies of Hansville Greenway trail maps. This will enable visitors to use trail signpost numbers in addition to the nearest street names to provide emergency responders with location information when calling 911. Cell phone coverage is poor in some areas of the Greenway, depending on the service provider, and this fact could limit the ability to communicate this information.

D. Educational Opportunities

HGA and Kitsap County encourage use of the Greenway for educational activities that are compatible with the Hansville Greenway's status as a wildlife sanctuary and nature preserve. Some groups conduct guided nature walks on Hansville Greenway trails. Such groups will be limited in size or divided into groups of no more than 20. Although scheduling of large group nature walks with HGA is encouraged, it is not required.

Scientific studies are encouraged, but should be coordinated with HGA and KC Parks.

7. Scope and Intent of These Stewardship Guidelines

When approved and adopted by the Kitsap County Parks and Recreation Department Director, these Guidelines will wholly replace and supersede the Stewardship Manual for the Hansville Greenway published and adopted by the Kitsap County Board of Commissioners in 1997. These Guidelines are intended to serve as a simplified, flexible foundation for Hansville Greenway stewardship and to allow stewardship to evolve over time and as circumstances require. Parts of these Guidelines which implement the statements of goals and basic policies, including implementing guidelines, policies and procedures, may be modified, supplemented and made more specific and certain by KC Parks and HGA within the scope of their respective functions, as circumstances and good stewardship require so long as such actions are consistent with the goals and basic policies articulated in these Guidelines. It shall be up to HGA, KC Parks, or both, to document any such actions as each may deem necessary or appropriate.