

HOW DO I LOOK UP THE CRITICAL AREAS ON MY PROPERTY?

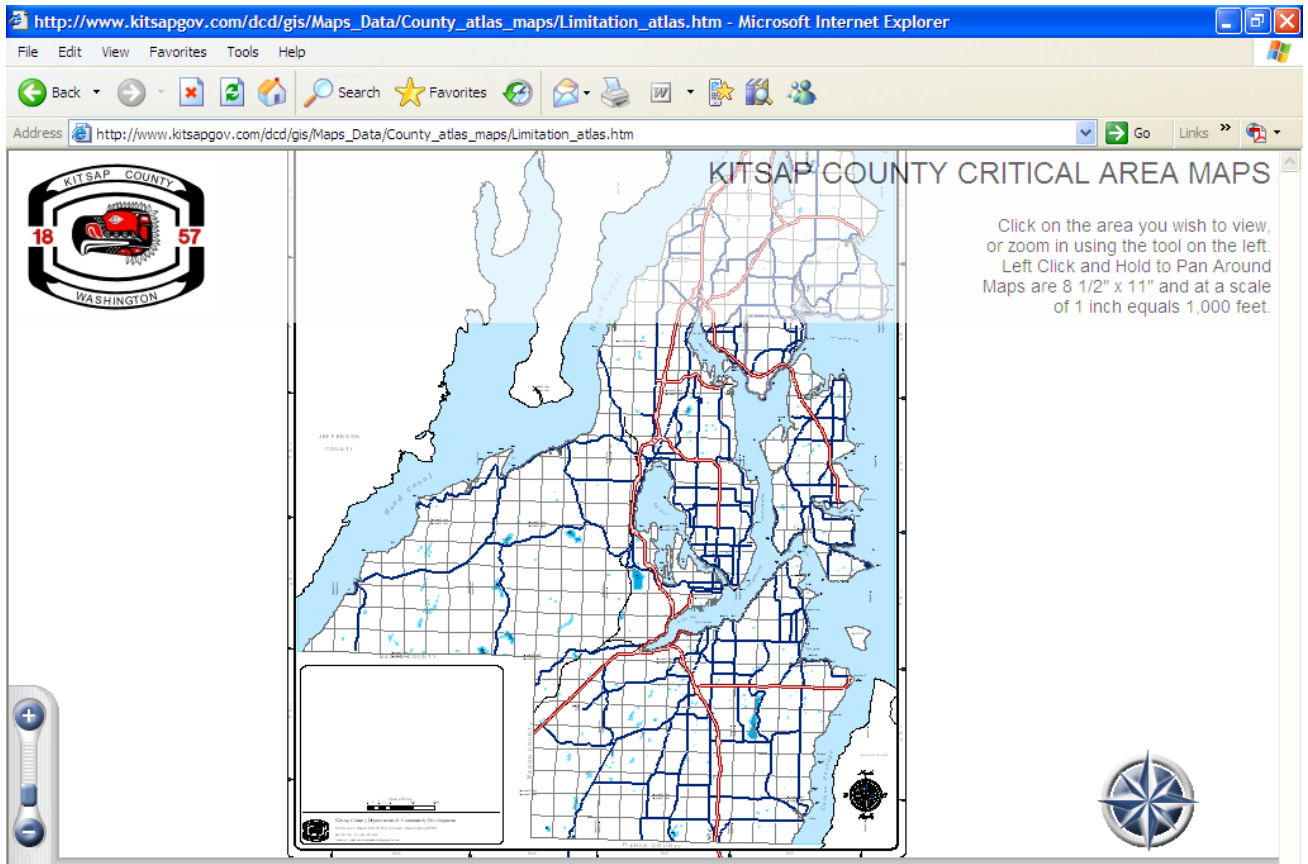
FIRST STEP: Gather your parcel information

1. Determine the "Section, Township, Range" in which the parcel falls.

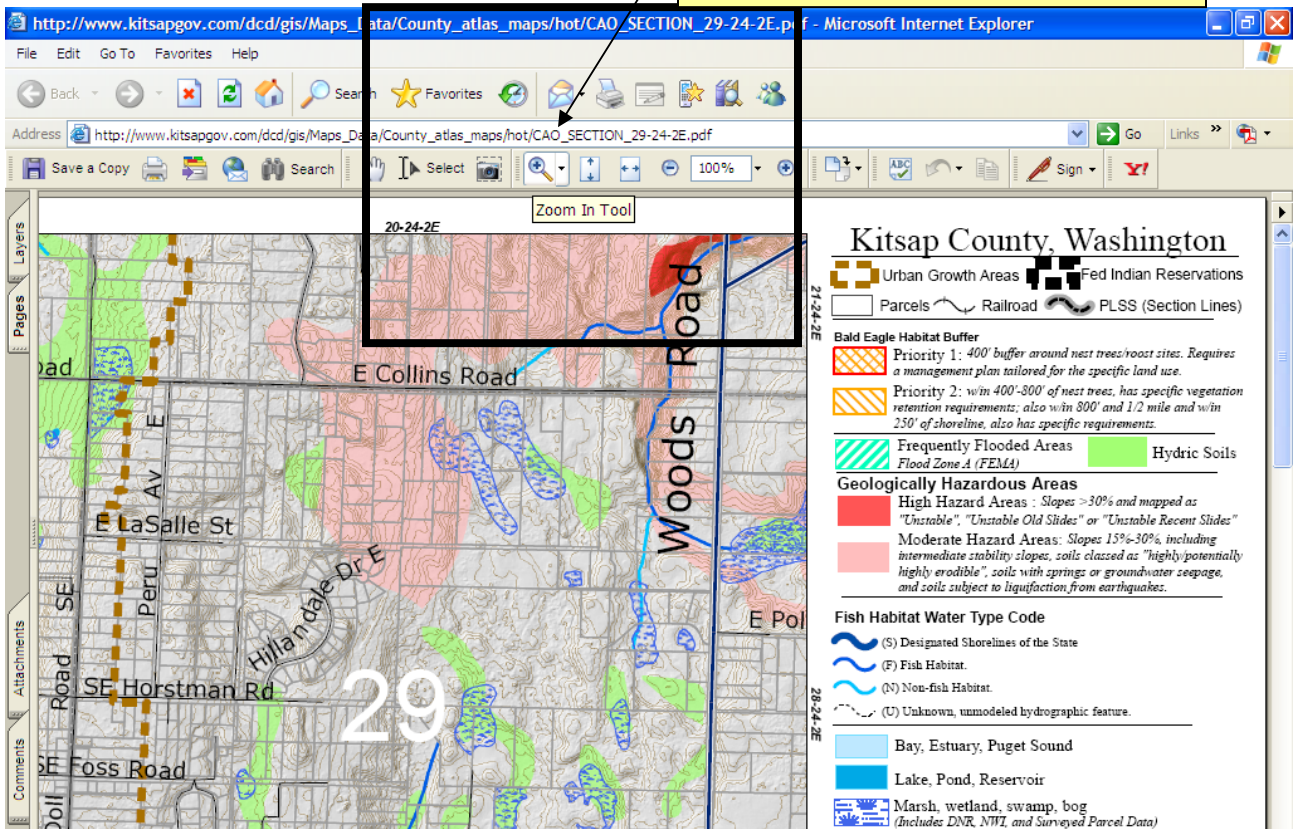
SECOND STEP: Go to www.kitsapgov.com/dcd

KITSAP COUNTY- DEPARTMENT OF COMMUNITY DEVELOPMENT WEBSITE

1. Click on [GIS \(Maps and Data\)](#), then [Maps and Data](#), then [County Atlas Maps- Building Limitations](#) (OR go directly to: http://www.kitsapgov.com/dcd/gis/Maps_Data/County_atlas_maps/Limitation_atlas.htm)
2. You will see the County's overview map for **Critical Areas!** The grid you see is the section-grid. Holding your mouse over the grid you will see the section, township, range identified in a text box. Click on the section that contains your parcel.

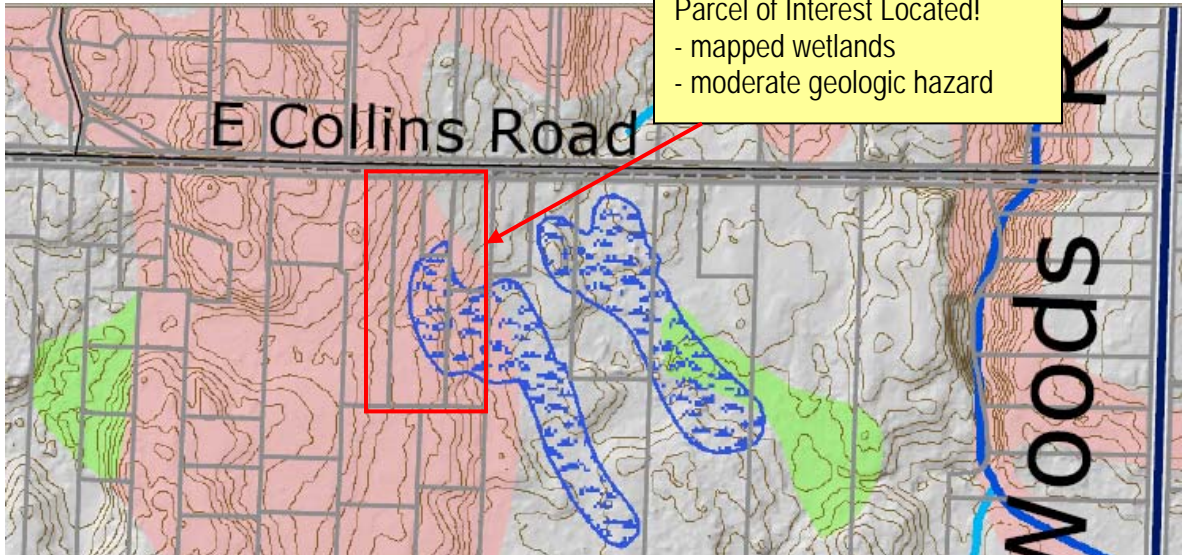


Use the ZOOM IN TOOL to enlarge the area where your parcel is located



Use the ZOOM IN TOOL to enlarge the area of interest. Either click using the ZOOM IN TOOL or drag the ZOOM IN TOOL to enlarge a rectangular space. Note: the LEGEND on the right identifies symbols for wetlands, hydric soils, fish habitat, bald eagle management zones, geologically hazardous zones etc.

Parcel of Interest Located!
- mapped wetlands
- moderate geologic hazard



You have just determined that your parcel contains areas mapped for wetlands and moderate geologic hazard! You can read up on how the **CRITICAL AREAS ORDINANCE** governs development on your parcel at: http://www.kitsapgov.com/dcd/lu_env/cao/cao.htm

LOOKING FOR MORE ENVIRONMENTAL INFORMATION?

FOR **SHORELINE DESIGNATION INFORMATION** use the Shoreline Master Program Map

- go to weblink:
http://www.kitsapgov.com/dcd/gis/maps/Standard_Maps/Environmental/Shoreline_Master_Plan.pdf

FOR **GENERALSHORELINE INFORMATION** use the Eastern Kitsap Nearshore Inventory Maps

- go to weblink:
<http://www.kitsapgov.com/dcd/nr/nearshore/nearshore2.htm>
- these maps indicate various attributes in each shoreline reach: overhanging structures, landscaped vegetation, buoys, major substrate, large woody debris, shoreline condition and slides, overhanging vegetation and shoreline types

FOR **ADDITIONAL ENVIRONMENTAL INFORMATION** use the Environmental Maps Page

- go to weblink:
http://www.kitsapgov.com/dcd/gis/Maps_Data/standard_maps/environ.htm
- you will find maps of critical aquifer recharge areas, streams and surface waters, geologic hazards, watersheds, elevation model, soil survey, WDFW habitat assessment

FOR **ZONING INFORMATION** use the Zoning Map Atlas

- go to weblink:
http://www.kitsapgov.com/dcd/gis/Maps_Data/County_atlas_maps/zoning_atlas.htm