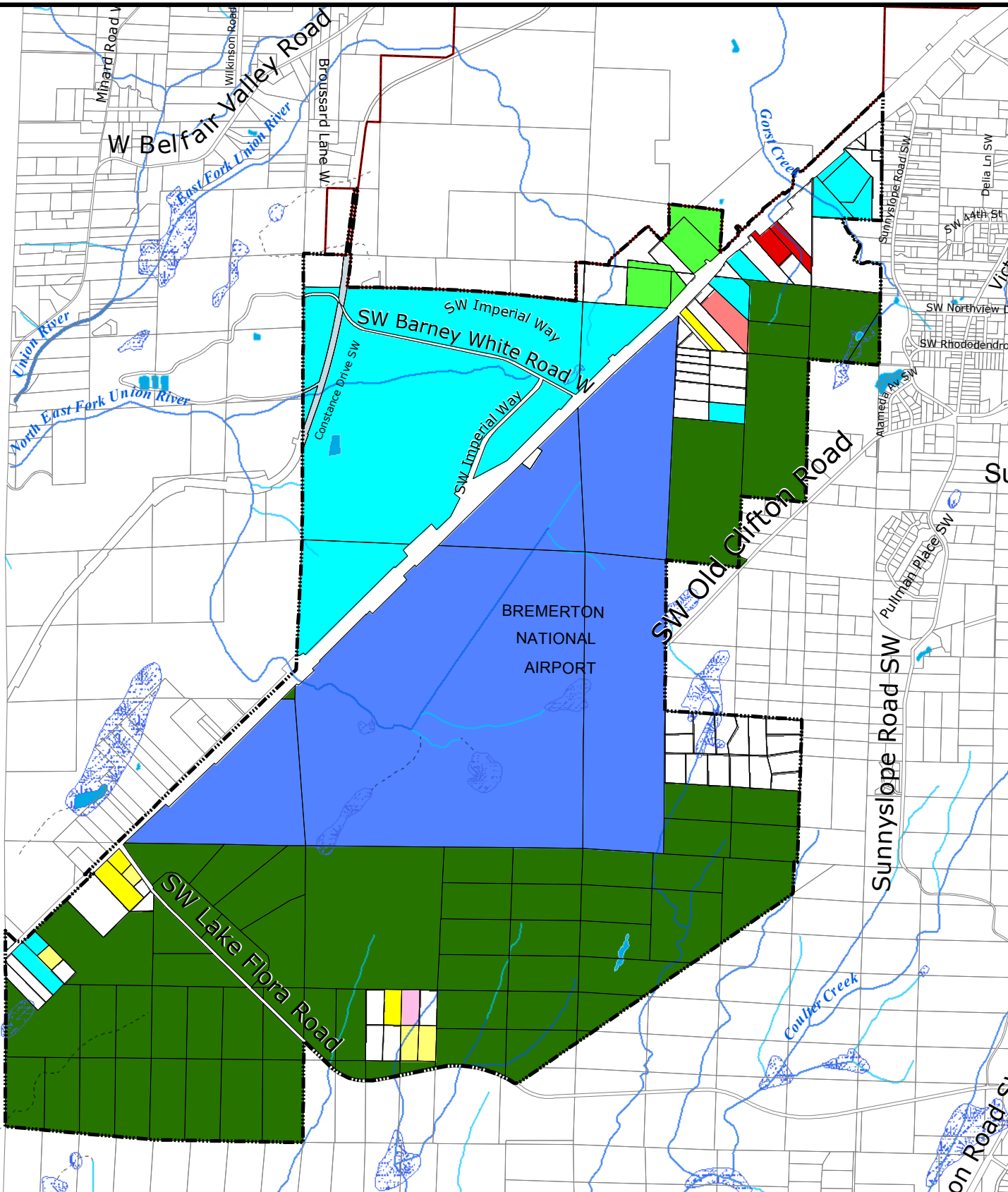


MASON COUNTY



- Legend**
- Airport
 - Single Family Residence
 - Mobile Home
 - Mobile Home Community
 - Sheds or Garages
 - Commercial
 - Industrial
 - Park - Recreation
 - Forest Land
 - Transportation
 - Vacant Land
 - Unincorporated Urban Growth Area
 - Incorporated City
 - Tax Parcels

- Waterbodies (defined in WAC 222-16-030)**
- Bay, estuary, Puget Sound
 - Lake, Pond, Reservoir, Gravel pit or quarry filled with water
 - Includes DNR, NWI, and Surveyed Wetlands
- Watercourses (defined in WAC 222-16-030)**
- Fish Habitat Water Type Code**
- (S) Designated Shoreline of the State
 - (F) Fish Habitat
 - (N) Non-fish Habitat
 - (U) Unknown, unmodeled hydrographic feature.

South Kitsap Industrial Area Urban Growth Area Current Land Use



Kitsap County Department of
Community Development
614 Division Street, MS-36
Port Orchard, Washington 98366
VOICE (360) 337-7181 * FAX (360) 337-4925



This map was created from existing map sources, not from field surveys. While great care was taken in using the most current map sources available, no warranties of any sort, including accuracy, fitness, or merchantability accompany this product. The user of this map assumes responsibility for determining its suitability for its intended use.

* THIS MAP IS NOT A SUBSTITUTE FOR FIELD SURVEY *

DRAFT
Map Date: December, 2007

