

Poulsbo UGA

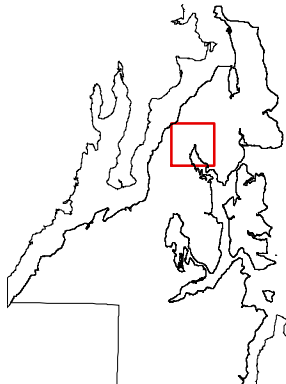
Alternative 3

Comprehensive Plan Map

Draft EIS

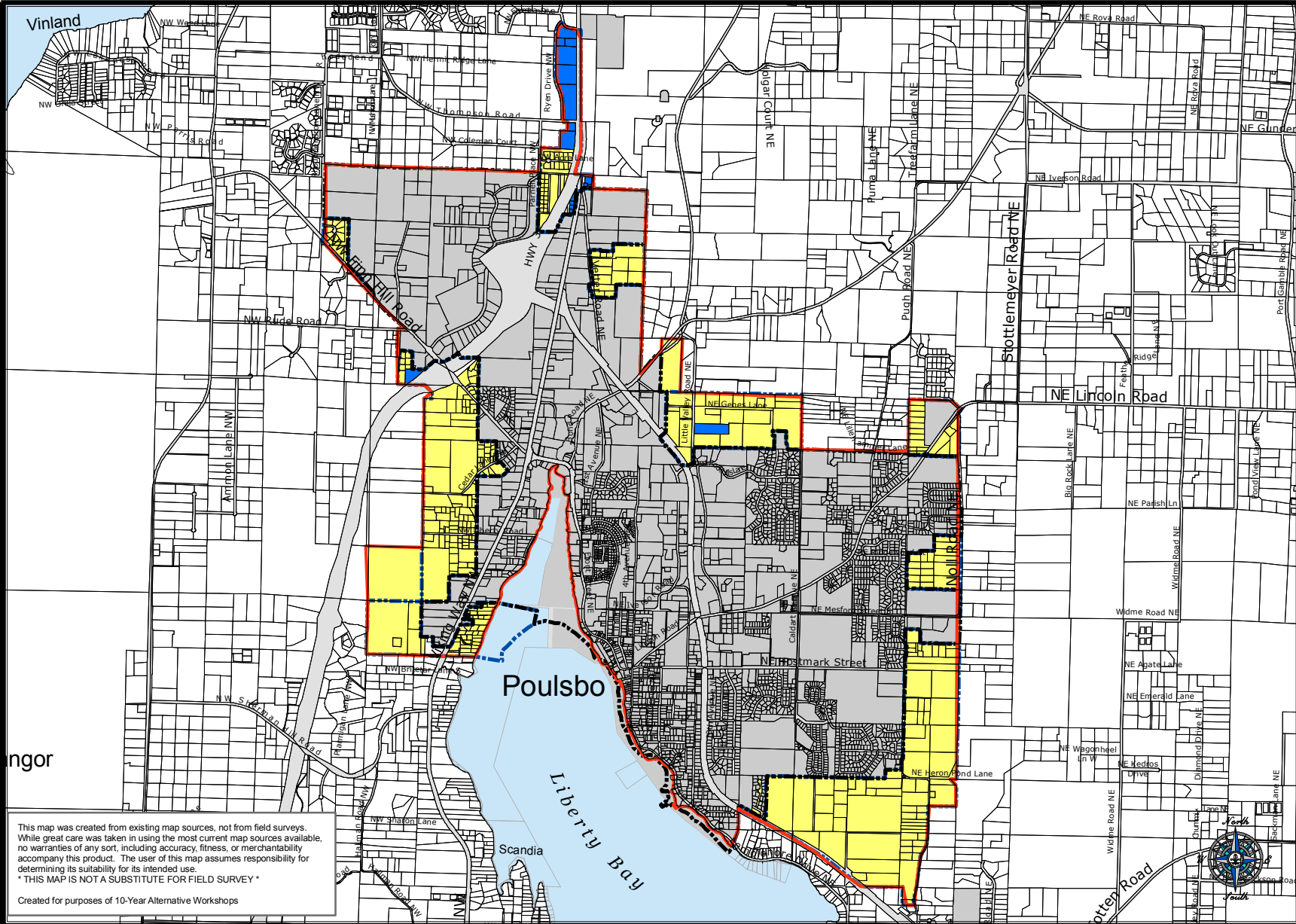
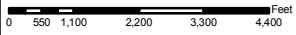
- Low Density Residential (4-5 DU/Ac)
- City of Poulsbo Municipal Code
- Title 18 ZONING
- Chapter 18.16 Low Density Residential District (RL District)
- Light Industrial
- City of Poulsbo Municipal Code
- Title 18 ZONING
- Chapter 18.32 Light Industrial District (LI District)

- Salt Water
- Limited Areas of More Intense Rural Development
- Urban Growth Area (Current)
- Incorporated City
- Alternative Boundary
- Right-of-Way
- Tax Parcel



May 31, 2006

Kitsap County Department of Community Development
 614 Division Street, MS-36, Port Orchard, Washington 98366
 VOICE (360) 337-7181 • FAX (360) 337-4925



This map was created from existing map sources, not from field surveys. While great care was taken in using the most current map sources available, no warranties of any sort, including accuracy, fitness, or merchantability accompany this product. The user of this map assumes responsibility for determining its suitability for its intended use.
 * THIS MAP IS NOT A SUBSTITUTE FOR FIELD SURVEY *
 Created for purposes of 10-Year Alternative Workshops

