

# Southern Kitsap County

## Changes to Future Land Use Preferred Alternative

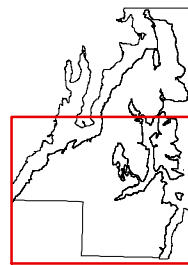
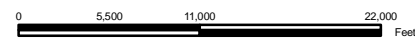
### Comprehensive Plan Designation

- Mineral Resource (1 DU/20 Ac)
- Rural Residential (1 DU/5 Ac)
- Urban Restricted (1-5 DU/Ac)
- Urban Low Residential (4-9 DU/Ac)
- Urban Medium Residential (10-18 DU/Ac)
- Urban High Residential (19-30 DU/Ac)
- Urban Reserve
- Urban Cluster Residential (4-9 DU/Ac)
- Urban Village Center (up to 18 DU/Ac)
- Mixed-Use (10-30 DU/Ac)
- Highway Tourist Commercial
- Neighborhood Commercial
- Urban Commercial
- Regional Commercial
- Industrial
- Industrial Multi-Purpose Recreational Area
- Business Park
- Parks/Open Space
- Public Facility
- Airport
- Incorporated City
- Tribal/Military
- Poulsbo Urban Transition Area
- Business Center
- Water

- Existing Urban Growth Area Boundary
- UGA Expansion Area Boundary
- UGA Contraction Area Boundary



Map Date: November 27, 2006



This map was created from existing map sources, not from field surveys. While great care was taken in using the most current map sources available, no warranties of any sort, including accuracy, fitness, or merchantability accompany this product. The user of this map assumes responsibility for determining its suitability for its intended use.  
**\*THIS MAP IS NOT A SUBSTITUTE FOR FIELD SURVEY\***

Created for the purposes of 10-Year Comprehensive Planning Process

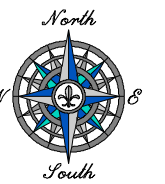
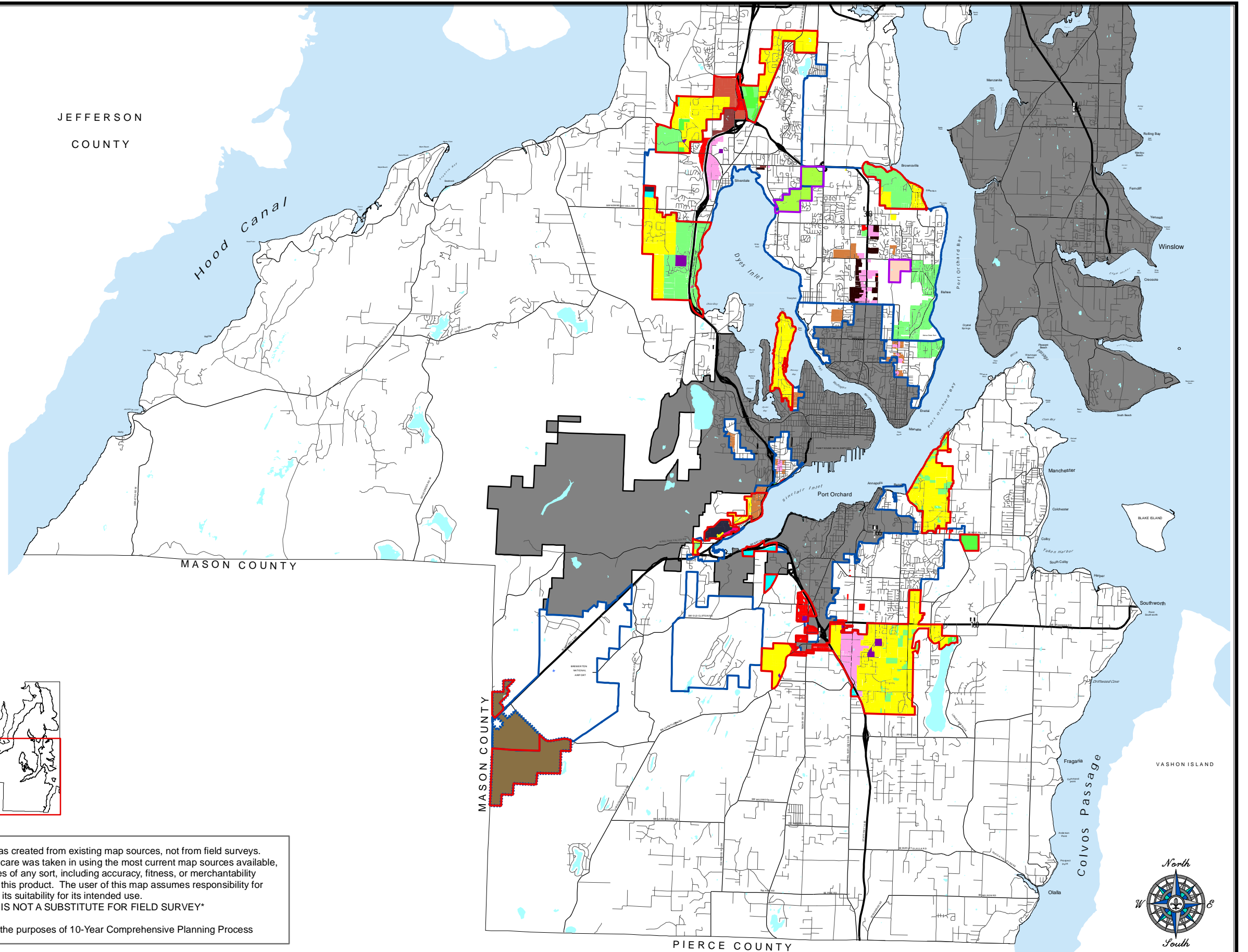


Figure 2.6-4. Changes to Future Land Use - Preferred Alternative South