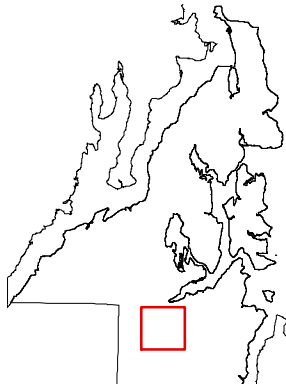


**McCormick Woods  
ULID#6 - UGA**

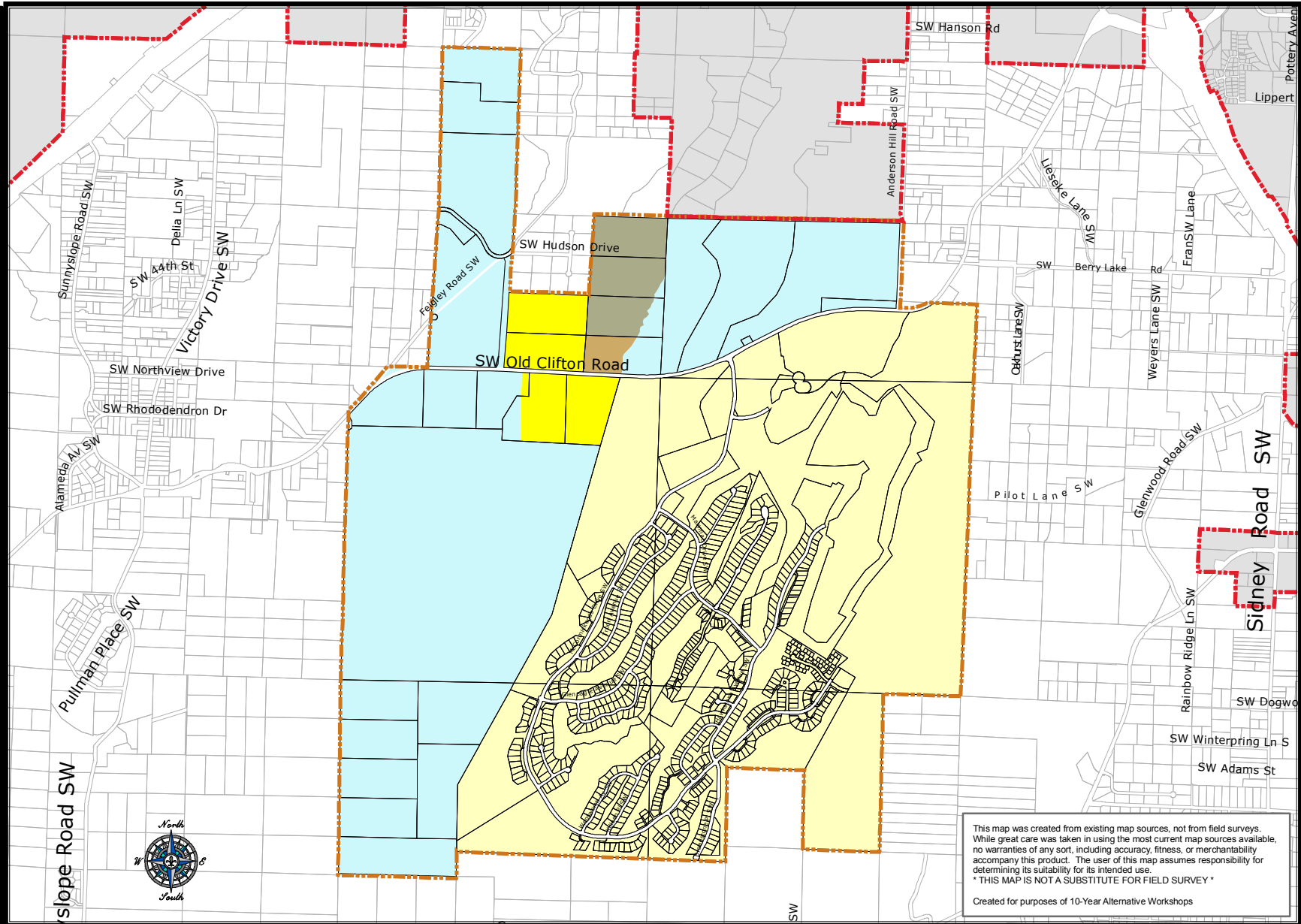
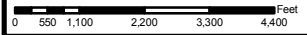
**Alternative 2  
ZONING**

- Urban Low Residential (4-9 Du/Ac)
- Urban Cluster Residential (4-9 Du/Ac)
- Urban Village Center (up to 18 Du/Ac)
- Business Park
- Incorporated City
- Urban Growth Area Boundary (Alternative 2)



August 28, 2006

Kitsap County Department of Community Development  
614 Division Street, MS-36, Port Orchard, Washington 98366  
VOICE (360) 337-7181 • FAX (360) 337-4925



This map was created from existing map sources, not from field surveys. While great care was taken in using the most current map sources available, no warranties of any sort, including accuracy, fitness, or merchantability accompany this product. The user of this map assumes responsibility for determining its suitability for its intended use.  
\* THIS MAP IS NOT A SUBSTITUTE FOR FIELD SURVEY \*  
Created for purposes of 10-Year Alternative Workshops