

Poulsbo UGA

Planning Commission Recommended Zoning Alternative 2

Residential Low (4-5 Du/Ac)
 City of Poulsbo Municipal Code
 Title 18 ZONING
 Chapter 18.16 Low Density Residential District (RL District)

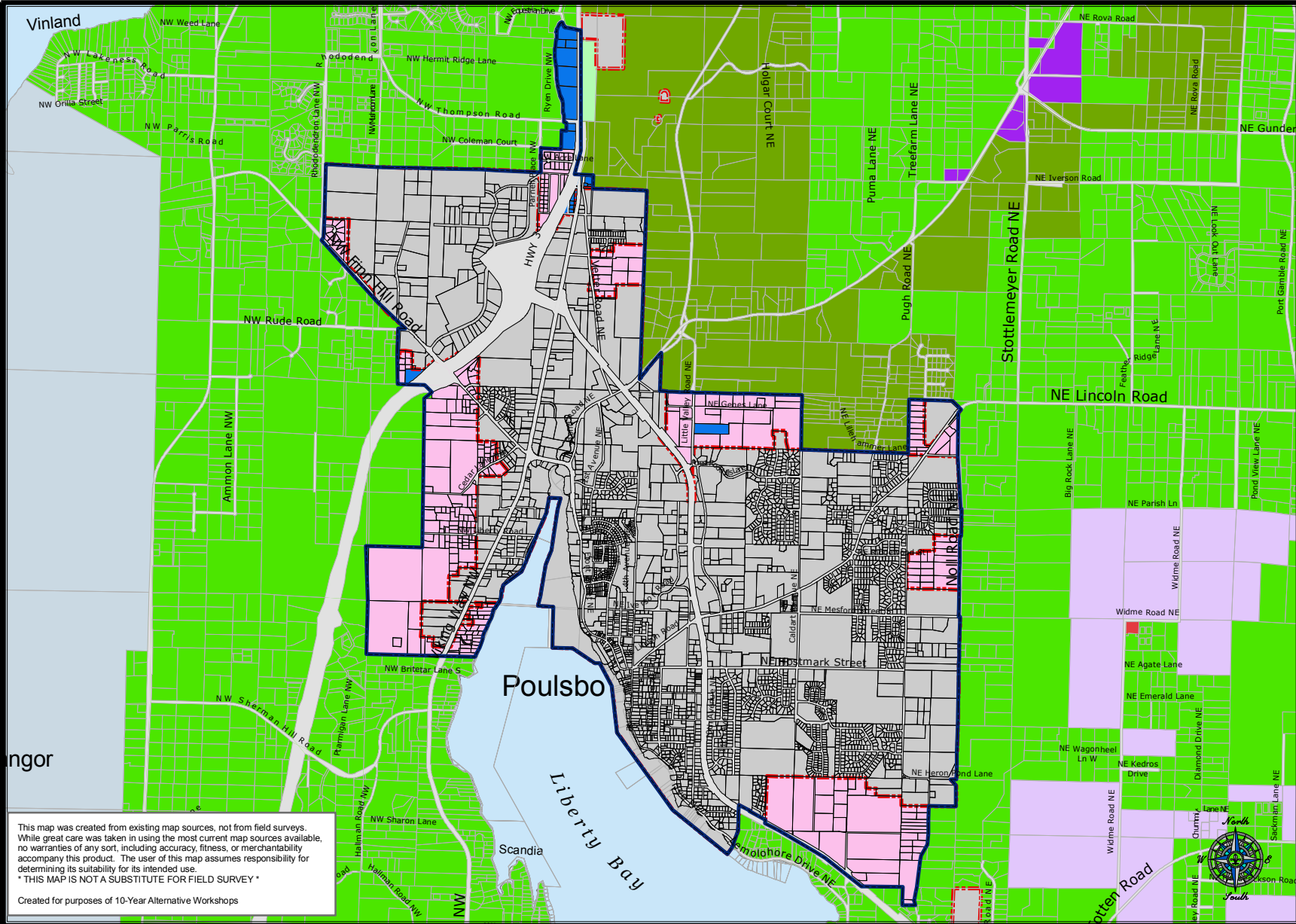
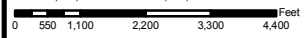
Light Industrial
 City of Poulsbo Municipal Code
 Title 18 ZONING
 Chapter 18.32 Light Industrial District (LI District)

- Rural Residential (1 Du/5 Ac)
- Rural Protection (1 Du/10 Ac)
- Industrial
- Neighborhood Commercial
- Park (Kitsap County)
- Military
- Tribal Land
- Incorporated City
- Urban Growth Area Boundary (Alternative 2)



October 10, 2006

Kitsap County Department of Community Development
 614 Division Street, Port Orchard, Washington 98366
 VOICE (360) 337-7181 • FAX (360) 337-4925



This map was created from existing map sources, not from field surveys. While great care was taken in using the most current map sources available, no warranties of any sort, including accuracy, fitness, or merchantability accompany this product. The user of this map assumes responsibility for determining its suitability for its intended use.
 * THIS MAP IS NOT A SUBSTITUTE FOR FIELD SURVEY *
 Created for purposes of 10-Year Alternative Workshops

