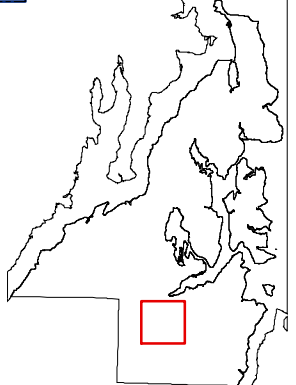


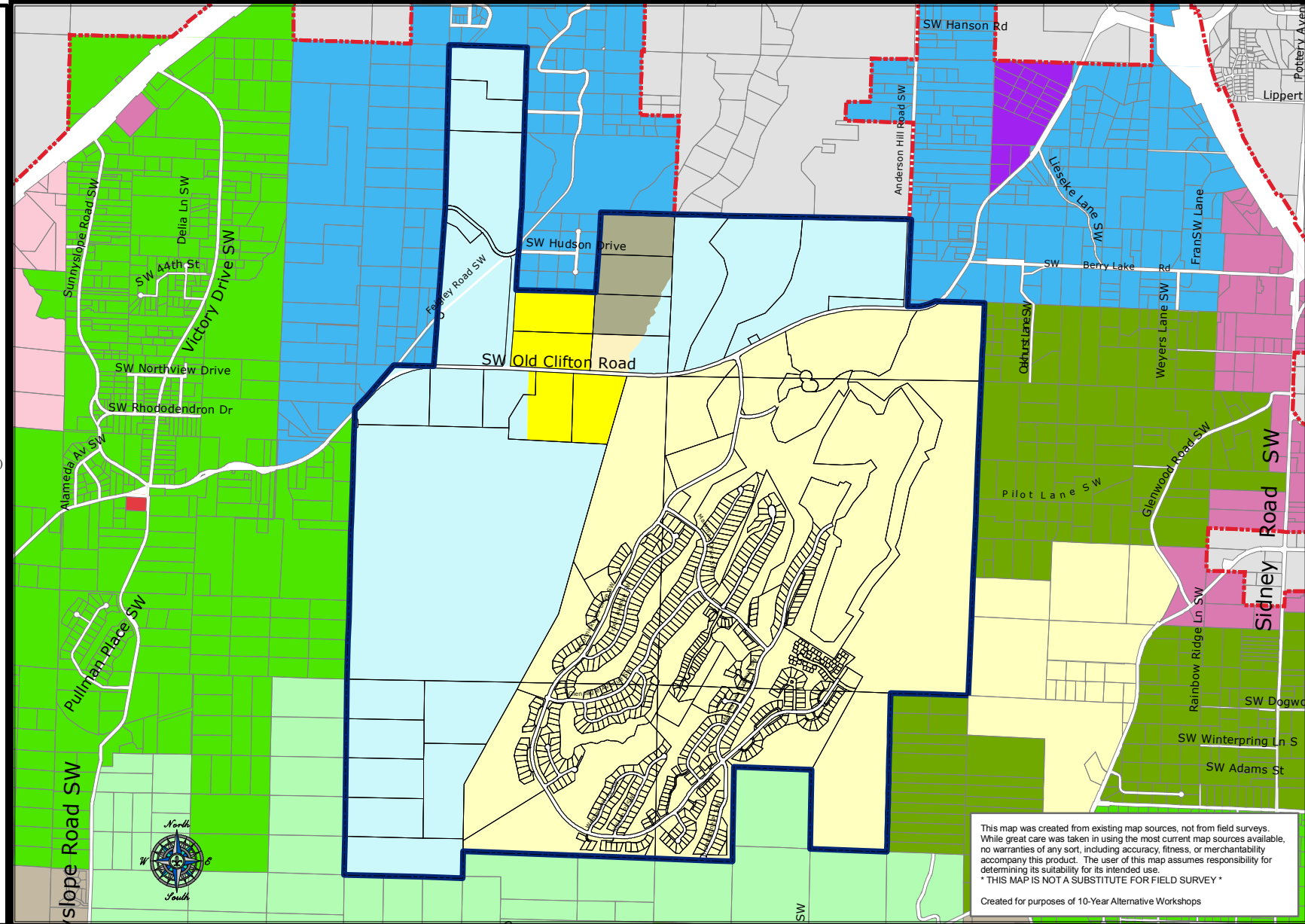
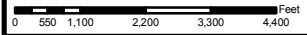
**McCormick Woods
ULID#6 - UGA
Planning Commission
Recommended
Zoning
Alternative 2**

- Business Park
- Business Center
- Industrial
- Neighborhood Commercial
- Highway/Tourist Commercial
- Urban Cluster Residential (4-9 Du/Ac)
- Urban Low Residential (4-9 Du/Ac)
- Urban Medium Residential (10-18 Du/Ac)
- Urban Village Center (up to 18 Du/Ac)
- Urban Reserve (1 Du/10 Ac)
- Rural Protection (1 Du/10 Ac)
- Rural Residential (1 Du/5 Ac)
- Rural Wooded (1 Du/20 Ac)
- Park (Kitsap County)
- Incorporated City
- Urban Growth Area Boundary (Alternative 2)



October 10, 2006

Kitsap County Department of Community Development
614 Division Street, MS-36, Port Orchard, Washington 98366
VOICE (360) 337-7181 • FAX (360) 337-4925



This map was created from existing map sources, not from field surveys. While great care was taken in using the most current map sources available, no warranties of any sort, including accuracy, fitness, or merchantability accompany this product. The user of this map assumes responsibility for determining its suitability for its intended use.
* THIS MAP IS NOT A SUBSTITUTE FOR FIELD SURVEY *
Created for purposes of 10-Year Alternative Workshops