

Natural Systems Chapter Relationship to Vision

Vision	Natural Systems Chapter Concepts
<p>County Government. County government that is accountable and accessible; encourages citizen participation; seeks to operate as efficiently as possible; and works with citizens, governmental entities and Tribes to meet collective needs fairly while respecting individual and property rights.</p>	<ul style="list-style-type: none"> Provides policy direction for County regulations and non-regulatory actions, as well as investments to protect natural resources. Includes policies to help shape intergovernmental processes.
<p>Natural Environment. Natural ecosystems – including interconnected wetlands, streams, wildlife habitat, and water quality – that have been rehabilitated, protected and enhanced and that allow for flexible and innovative development to meet environmental and growth goals. In developed areas, the growth pattern supports conservation of non-renewable energy and minimizes impacts on air quality and climate.</p>	<ul style="list-style-type: none"> Protect the ecological integrity of streams, lakes, wetlands, Puget Sound and Hood Canal while allowing for compatible growth and development. Manage land use and stormwater to protect groundwater and surface water quality and quantity. Reduce the risk of damage to property, life and the natural environment from geologically hazardous areas and flooding. Protect and restore fish and wildlife habitat, including priority habitats for sensitive species.
<p>Housing. Residential communities that are attractive, affordable, diverse, and livable supported by appropriate urban or rural services. A variety of housing choices are available, meeting a full range of resident income levels and preferences. Residents are able to walk between neighborhoods and to community destinations.</p>	
<p>Open Space. An open space network – including greenbelts, wildlife habitat, forested areas, and active and passive parks – that is accessible, interconnected, provides opportunities for recreation and defines and distinguishes urban and rural areas.</p>	<ul style="list-style-type: none"> Minimize habitat fragmentation and protect open space and connective corridors. Ensure that open space plans are consistent with habitat inventories and habitat protection plans.
<p>Urban Areas. Healthy urban areas that are the region's centers for diverse employment and housing opportunities, all levels of education, and civic and cultural activities.</p>	<ul style="list-style-type: none"> Focus housing and population growth in urban areas to reduce impacts to natural systems.
<p>Rural Areas. Rural areas and communities where unique historical characters, appearances, functions, and pioneering spirits are retained and enhanced. Natural resource activities, such as forestry, agriculture, and mining continue to contribute to the rural character and economy. Rural recreation opportunities are enhanced, including equestrian facilities, trails, and others.</p>	<ul style="list-style-type: none"> Protect rural areas and natural systems by focusing growth in urban areas.
<p>Cultural Resources. Historic and archaeological resources that have been recognized and preserved for future generations.</p>	
<p>Economic Development. A stable, prosperous and diversified economy that provides living wage jobs for residents, supported by adequate land for a range of employment uses and that encourages accomplishment of local economic development goals.</p>	<ul style="list-style-type: none"> Identify land for commercial and industrial development, and allows for a variety of uses and development types on those lands, while preserving natural resources and ecosystems that contribute to the County's attractive quality of life.
<p>Public Services and Facilities. Public services and facilities – including, but not limited to, parks and recreation, law enforcement, fire protection, emergency preparedness, water/sewer, roads, transit, non-motorized facilities, ferries, stormwater, education, library services, health and human services, energy, telecommunications, etc. – are provided in an efficient, high-quality and timely manner by the County and its partner agencies. Public services and facilities are monitored, maintained and enhanced to meet quality service standards.</p>	<ul style="list-style-type: none"> Focus growth in areas that will have access to urban services such as sewers and water systems, reducing impacts on water quality and quantity Provide policy direction for land use patterns and stormwater management practices to reduce impacts on surface waters and groundwater resources Provide guidance for investments in stormwater drainage infrastructure.
<p>Transportation. An efficient, flexible, and coordinated multi-modal transportation system – including roads, bridges and highways, ferries, transit, and non-motorized travel – that provides interconnectivity and mobility for county residents and supports our urban and rural land use pattern.</p>	



Chapter 4. Natural Systems

4.1. Plan Context

As Kitsap County continues to grow, the detrimental impacts of that growth on the natural environment becomes more pronounced. The proximity of attractive natural areas and the recreational opportunities made available by fish, wildlife, clean water and open spaces play a large role in enhancing the quality of life in Kitsap County. In order to adequately meet the need for protection, preservation and enhancement of natural resources, the Natural Systems Chapter provides a framework that recognizes the relationship between Kitsap County's natural resources, land use planning, and a variety of regulatory and non-regulatory efforts.

This chapter includes goals and policies to protect and enhance natural resources and to guide future growth in a manner that minimizes impacts to the county's natural environment. Impacts of development are minimized primarily through regulations on development while enhancements to natural resources are primarily through non-regulatory efforts. The implementation of the policies outlined in the chapter supports the protection and enhancement of these areas. These elements are defined, mapped, and regulated in the Kitsap County Critical Areas Ordinance (CAO), which received Best Available Science (BAS) review in 2005.

Key elements of natural systems in the county are regulated as critical areas, including geologically hazardous areas, critical aquifer recharge areas, wetlands, frequently flooded areas, and fish and wildlife habitat conservation areas.

Non-regulatory efforts to enhance natural resources include (1) habitat/open space planning and property acquisition, typically by a public entity; (2) salmon recovery planning, monitoring, and project implementation; and (3) water resources planning, monitoring, management, and project implementation.

This chapter works with other chapters of the Kitsap County Comprehensive Plan (Plan) to protect and enhance critical areas and natural resources. Chapter 2, *Land Use*, helps protect sensitive environmental areas by directing intense development away from them and into more suitable areas. This chapter also works with Chapters 5 and 6, *Economic Development* and *Housing*, to keep the community attractive to residents and businesses by retaining the features

that contribute to a high quality of life. This chapter also works with Chapter 10, *Parks, Recreation, and Open Space*, by identifying areas that should be considered for acquisition as County-owned parks and open space.

4.2. Natural Systems Goals and Policies

4.2.1. Geologically Hazardous Areas

Geologically hazardous areas are defined as critical areas due to their susceptibility to erosion, sliding, earthquake, or other geological events. They are not suited to siting high density or intensity commercial, residential or industrial development consistent with public health or safety concerns. Critical aquifer recharge areas are defined as areas that contain hydrogeologic conditions that facilitate aquifer recharge and/or transmit contaminants to an underlying aquifer.

Goal 1. Protect public safety and health, maintain water quality and habitat, minimize erosion of soils and bluffs, and diminish the public cost of repairing areas from damage due to landslides, erosion and seismic activities. (formerly Geologically Critical Areas Goal 1)

- | | |
|-------------|---|
| Policy NS-1 | Ensure that development in geologically hazardous areas occurs in a manner that poses no hazard to health or property and that minimizes impacts to the natural environment, including stream and shoreline processes. (similar to policy NS-1) |
| Policy NS-2 | Delineate hydric soils on a wetlands map and ensure development on these soils is in accordance with wetlands policies and regulations. (similar to policy NS-3) |
| Policy NS-3 | Where information about extensive fill areas is known, depict fill areas as areas of geological concern. (similar to policy NS-4) |
| Policy NS-4 | Review building and land use applications in geologically hazardous areas to see that public health, safety and welfare are protected. (similar to policy NS-6) |
| Policy NS-5 | Restrict development in Geologically Hazardous Areas unless the site is demonstrated by a qualified geotechnician to be suitable for building. (same as policy NS-7) |
| Policy NS-6 | Protect the forested slopes and ridgelines designated as geologically hazardous areas. Formulate design criteria for development in these areas. (formerly Geologically Critical Areas Goal 5) |
| Policy NS-7 | Maintain and minimize alteration of natural shoreline processes such as eroding shoreline bluffs, or feeder bluffs, that support the geologic, biologic, and |

aesthetic diversity of the County's shorelines. (similar to Geologically Critical Areas Goals 6 and 7)

Goal 2. Consider geologically hazardous areas in designating comprehensive plan designations and implementing zones. (formerly Geologically Critical Areas Goal 2)

- Policy NS-8 Maintain and update a County map for land use planning and regulatory purposes that depicts both Areas of High and Areas of Moderate Geologic Hazard. (formerly Geologically Critical Areas Goal 3)
- Policy NS-9 Maintain a Critical Areas Ordinance (CAO) that addresses land use controls in geologically critical areas. (modified from former Geologically Critical Areas Goal 4)
- Policy NS-10 Base the geologically hazardous areas map on best available scientific information, such as the Coastal Zone Atlas of Washington, Quaternary Geology and Stratigraphy of Kitsap County, and other available geotechnical reports. (similar to policy NS-2)
- Policy NS-11 Update the geologically hazardous areas map regularly to reflect the latest information. (similar to policy NS-5)
- Policy NS-12 Establish development standards in geologically hazardous areas that promote maintenance of existing vegetation to discourage clearing of ridgelines and slopes to provide scenic vistas, and to ameliorate stormwater drainage impacts. (same as policy NS-8)
- Policy NS-13 Encourage location of building sites away from steep slopes and breaks-in-slopes. (similar to policy NS-9)

4.2.2. Critical Aquifer Recharge Areas

In Kitsap County, groundwater is the source of all drinking water outside of Bremerton's service area. Places where rainfall soaks into the ground are called recharge areas. Places where the geologic conditions are such that surface contaminants could pollute water supplies are considered critical aquifer recharge areas. The CAO recognizes two categories of critical aquifer recharge areas: Category I and II, with Category I being areas with a higher risk of contamination of water supplies.

Category I and II critical aquifer recharge areas are protected through a combination of regulatory restrictions on land uses that pose an elevated risk of contaminating groundwater and low-density zoning.

Goal 3. Safeguard the quality and quantity of long-term water supplies by preserving and protecting critical aquifer recharge areas through use of the appropriate regulatory means. (modified from Aquifer Recharge Areas Goal 8)

- Policy NS-14 Evaluate, minimize and mitigate unavoidable impacts to groundwater quality and quantity during the planning and development review process. Consider the cumulative impacts of existing and future development on surface water quantity and quality. (modified from Aquifer Recharge Areas Goal 8)
- Policy NS-15 Coordinate with the US Geological Survey, Kitsap County Health District, and Kitsap Public Utility District to maintain and update the methodology and mapping used to identify Category I and Category II Critical Aquifer Recharge Areas. (replaces Aquifer Recharge Areas Goal 10 and modifies policy NS-10)
- Policy NS-16 Evaluate proposed plans and projects for their potential adverse impacts upon groundwater quality and quantity. Ensure that plans and project design address the extent of and mitigate for the recharge-limiting effect of impermeable surfaces or other factors affecting groundwater quantity and quality. (modified from policies NS-14 and NS-16)
- Policy NS-17 Limit land uses listed by the Environmental Protection Agency (EPA) Office of Groundwater and Drinking Water exhibit titled “Potential Sources of Drinking Water Contamination Index” within Category I Critical Aquifer Recharge Areas. Within Category II areas, require appropriate safeguards and/or mitigation for listed land uses. (modified from policy NS-15)
- Policy NS-18 Require proposed projects that present a threat to critical aquifer recharge areas and groundwater quality to provide hydrogeologic information to evaluate the proposal, in accordance with adopted plans and regulations. (modified from policy NS-13)
- Policy NS-19 Promote construction of facilities and technologies that maximize the retention and recharge of stormwater. (modified from policy NS-24)

Goal 4. Comprehensively monitor and manage water resources to ensure their long-term viability. (replaces Aquifer Recharge Areas Goal 9)

- Policy NS-20 Ensure that local water resources are comprehensively monitored, paying special attention to aquifer recharge areas, groundwater levels, stream flows, and saltwater intrusion. (new)
- Policy NS-21 Implement plans created to improve water resource management, including the recommendations of the proposed Kitsap Peninsula (WRIA 15) Watershed Plan and Kitsap County Groundwater Management Plan, using resources available to

- accomplish higher priority actions first. (Replaces Aquifer Recharge Areas Goal 11, modifies policy NS-17)
- Policy NS-22 Consider the impacts of wastewater plans on groundwater quality and quantity. (similar to policy NS-20)
- Policy NS-23 Encourage public and private water purveyors to designate and manage wellhead protection areas in keeping with the Washington State Department of Health's Wellhead Protection Program. (modified from policy NS-12)
- Policy NS-24 Coordinate with Washington State Department of Ecology, Kitsap Public Utility District, Kitsap County Health District, local tribes, and other jurisdictions and government agencies to pursue funding for water resource management efforts. (modified from policy NS-23)
- Policy NS-25 Seek opportunities to use reclaimed water for wetland augmentation, irrigation, stream enhancement, and aquifer replenishment. (modified from policy NS-21)
- Policy NS-26 Take immediate action to correct or limit saltwater intrusion in areas with evidence of intrusion. (modified from policy NS-22)
- Policy NS-27 Implement BAS to ensure that groundwater quantity is adequately maintained to protect in-stream flows for anadromous fish populations, in accordance with adopted plans and regulations. (modified from policy NS-26)

Goal 5. Maintain a groundwater education program for County residents and businesses. (same as Aquifer Recharge Areas Goal 12)

- Policy NS-28 Coordinate with appropriate agencies and jurisdictions to implement a public education program that promotes water conservation and emphasizes the proper installation and maintenance of septic systems and the proper use and disposal of fertilizers and pesticides including the use of non-toxic alternatives where possible. (similar to policy NS-25)

4.2.3. Surface Water Resources

Surface waters include wetlands, streams, ponds, lakes, marine waters of Puget Sound and Hood Canal. These areas are highly valued by Kitsap citizens and are home to a wide variety of fish and wildlife species.

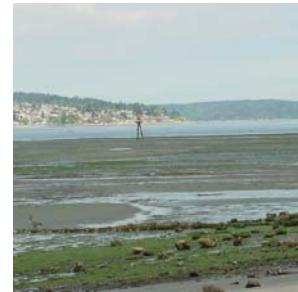
Wetlands generally include, but are not limited to swamps, marshes, estuaries, bogs, and ponds less than 20 acres, including their submerged aquatic beds and similar areas. Wetlands do not include those artificial wetlands intentionally created from non-wetland sites, including, but not limited to, irrigation and drainage ditches, grass-lined swales, canals, stormwater facilities, wastewater treatment facilities, farm ponds, and landscape amenities, or those wetlands created after July 1, 1990, that were



unintentionally created as a result of the construction of a road, street, or highway. Wetlands include those artificial wetlands intentionally created from non-wetland areas to mitigate the conversion of wetlands.

Goal 6. Protect the water quality, flows and ecological integrity of rivers, streams, lakes, wetlands, the Puget Sound and Hood Canal by appropriately regulating through the development review process stormwater and land use while allowing for compatible growth and development. (modified from Surface Water Resources Goal 13 with revisions)

Policy NS-29 Protect marine and fresh surface water resources by ensuring that development, including rights-of-way, in critical areas is consistent with the CAO, Shoreline Management Master Program, and other applicable local regulations. (NS-27, with revisions)



Policy NS-30 Evaluate, avoid, minimize, and mitigate unavoidable impacts to surface water quality and quantity during the planning and development review process. Consider the cumulative impacts of existing and future development on surface water quantity and quality. (modified from Surface Water Resources Goal 14 with revisions)

Policy NS-31 Require native vegetation buffers along streams and wetlands to protect the functions and values of those surface waters. (NS-34, with revisions)

Policy NS-32 Strive to achieve no net loss of wetland function in the short term, and a measurable gain of wetland function in the long term, in the following manner: Avoid direct impacts on wetlands and buffers; minimize direct impacts to wetlands and buffers; and mitigate impacts through creation, restoration, or enhancement of wetlands or buffers. (NS-35, with revisions)

Goal 7. Maintain accurate and scientifically sound development regulations that protect the water quality, flows and ecological integrity of rivers, streams, lakes, wetlands, Puget Sound, and Hood Canal while allowing for compatible growth and development. (Goal 13, with revisions)

Policy NS-33 Maintain a CAO that protects surface water resources including fish and wildlife habitats and wetlands with special consideration for anadromous fish. (Goal 16 with revisions)

- Policy NS-34 Utilize BAS to improve the protection of and increase the accuracy of information about wetlands, flood plains, channel migration zones, watershed boundaries and stream locations and types. (modified from Surface Water Resources Goal 15 with revisions)
- Policy NS-35 Map wetlands, streams, fish and wildlife habitat conservation areas, geologically hazardous areas, frequently flooded areas, flood plains, channel migration zones, and the findings of professionally conducted local wetlands inventories in the County's Geographic Information System. (modified from policy NS-30)
- Policy NS-36 Support and encourage community groups to sponsor professionally conducted local wetlands inventories. (similar to policy NS-31)
- Policy NS-37 Develop and implement a mitigation banking program with sites in multiple watersheds to mitigate for unavoidable impacts to wetlands, streams, and their buffers. Ensure that replacement of altered or displaced wetland or stream functions occurs within the drainage basin or service area designated by the department. (NS-39, NS-60, with revisions)

4.2.4. Frequently Flooded Areas

Frequently flooded areas are defined as lands, shorelands, and waters that are within the 100-year floodplain as designated by the Federal Emergency Management Agency on Flood Insurance Rate and Boundary Maps.



Goal 8. Reduce the risk of damage to life, property, and the natural environment from flooding through appropriate regulatory means. Prevent development on floodplains that might have the potential to damage property or increase height, flow or velocity of floodwater. (same as Frequently Flooded Areas Goal 21)

- Policy NS-38 Avoid development in frequently flooded areas except when no conditions will be created which will be injurious to life, property or natural systems in times of flooding. (same as policy NS-48)
- Policy NS-39 Require improvements to existing structures within frequently flooded areas are constructed using methods and practices that minimize flood damage. (similar to policy NS-49)
- Policy NS-40 Minimize diking and bank protection that may alter the natural hydrology of streams, except where used to enhance habitat. (NS-50, with revisions)

- Policy NS-41 Prohibit the construction of flood barriers that will unnaturally divert floodwaters or that may increase flood hazards in other areas. (same as policy NS-51)
- Policy NS-42 Encourage maintenance of natural vegetation in floodplains to minimize runoff into streams and reduce the damage caused by increased stream flow, stream velocity and coastal flooding. (NS-52, with revisions)

Goal 9. Prevent land use in floodplains that may degrade water quality during times of flooding. (same as Frequently Flooded Areas Goal 22)

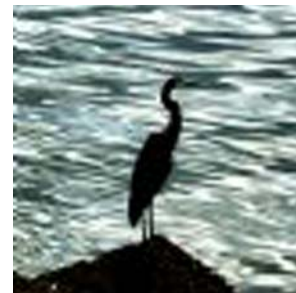
- Policy NS-43 Prohibit locating hazardous materials and solid waste facilities in floodplains. (similar to policy NS-54)
- Policy NS-44 Coordinate with the Kitsap County Health District to discourage locating on-site septic systems in floodplains. (similar to policy NS-55)

Goal 10. Reduce the occurrence of flooding due to drainage problems and increased stormwater runoff. (same as Frequently Flooded Areas Goal 23)

- Policy NS-45 Require site design in development regulations that minimizes impervious surfaces, limits grading, and protects areas of undisturbed vegetation in order to decrease stormwater runoff and hydrologic changes in drainage basins. (similar to NS-56)

4.2.5. Plant, Fish and Wildlife Habitat Conservation Areas

Fish and wildlife habitat conservation areas are defined as those areas identified as being of critical importance to the maintenance of fish, wildlife, and plant species, including areas with which endangered, threatened, and sensitive species have a primary association; habitats and species of local importance; commercial and recreational shellfish areas; kelp and eelgrass beds; forage fish spawning areas; naturally occurring ponds and their submerged aquatic beds that provide fish or wildlife habitat; waters of the state; lakes, ponds, streams or rivers planted with game fish by a government or Tribal entity or private organization; state natural area preserves and natural resource conservation areas.



Areas that are critical for fish and wildlife are primarily conserved via regulatory means; other areas are primarily dealt with through non-regulatory, incentive-based approaches.

Goal 11. Preserve the biological diversity of Kitsap County and Puget Sound by appropriately regulating terrestrial and aquatic habitat areas. (Goals 24 & 27, with revisions)

- Policy NS-46 Minimize habitat fragmentation and maximize connectivity of open space corridors when designating land use and zoning classifications, and reviewing development proposals. (NS-64, with revisions)
- Policy NS-47 Maintain and update a countywide inventory of existing plant, fish and wildlife habitat and make information available to the public. (similar to NS-62)
- Policy NS-48 Identify and protect habitat conservation areas throughout Kitsap County. (revision of Plant, Fish and Wildlife Habitat Conservation Areas Goal 25)
- Policy NS-49 Coordinate with appropriate state agencies, local tribes, and community organizations to refine and maintain thorough countywide assessments of habitat types and areas with important habitat elements. Based upon these assessments, develop a habitat protection plan that identifies areas most in need of protection and restoration, with special consideration for anadromous fish species. (modified from policy NS-61)
- Policy NS-50 Coordinate to minimize habitat fragmentation and protect open space and connective corridors. (similar to policy NS-64)
- Policy NS-51 Coordinate with other government jurisdictions to protect habitat areas and corridors that cross jurisdictional boundaries. (similar to policy NS-63)
- Policy NS-52 Consider the impacts to habitat conservation areas, plant communities, and fish and wildlife populations in designating land use and zoning classifications. (modified from policy NS-65)
- Policy NS-53 Require vegetative buffers along surface waters to protect fish and wildlife habitat. Larger or enhanced buffer areas may be required to adequately protect priority fish and wildlife species. Buffer enhancement, restoration, and/or mitigation shall be required where buffers have been degraded or removed during new development. (NS-68 and NS-69, with revisions)
- Policy NS-54 Review building permit applications located within identified habitat conservation areas and forward those that may pose a potential adverse impact to the appropriate agencies for review. (modified from policy NS-70)
- Policy NS-55 Encourage developers to protect continuous corridors of native vegetation wherever possible, to disturb as little natural vegetation as feasible, and to enhance or restore wildlife habitat by transplanting or planting native vegetation in the developed landscape. (similar to policy NS-72)

- Policy NS-56 Encourage cluster development to protect fish and wildlife habitat and, where possible, plan cooperatively with adjacent property owners to provide maximum habitat potential. (same as NS-73)
- Policy NS-57 Consider long-term impacts to habitat conservation areas and important habitat elements during the review of conversion option plans for forestry lands. (similar to policy NS-74)
- Policy NS-58 Encourage private-public partnerships and voluntary efforts to protect and restore and enhance fish and wildlife habitat. (similar to policy NS-79)
- Policy NS-59 Encourage voluntary protection of species and habitat. Provide information about existing government and private programs pertaining to voluntary habitat protection, enhancement and restoration. (modified from Plant, Fish and Wildlife Habitat Conservation Areas Goal 28 and policies NS-78 and NS-79)
- Policy NS-60 Encourage best management practices in the use of herbicides and pesticides near surface waters or drainage ditches. (NS-32, with revisions)

Goal 12. Maintain accurate and sound development regulations that preserve the biological diversity of Kitsap County and Puget Sound. (Goals 24 and 27, with revisions)

- Policy NS-61 Improve mapping of habitat conservation areas throughout Kitsap County. (Goal 25, with revisions)
- Policy NS-62 Maintain a CAO and development regulations that protect habitat conservation areas and important habitat elements. (Goal 26, with revisions)
- Policy NS-63 Identify species of local importance within Kitsap County. (Goal 29)

Goal 13. Preserve the biological diversity of Kitsap County and Puget Sound using non-regulatory means as appropriate. (Goal 24)

- Policy NS-64 Maintain a countywide inventory of existing plant, fish, and wildlife habitat, including habitat for all species of concern identified by Washington Department of Fish and Wildlife (WDFW), and make information available to the public. (POS-O, NS-62, with revisions)
- Policy NS-65 Map priority conservation areas based upon a synthesis of existing countywide assessments of aquatic habitat quality, terrestrial habitat quality, and groundwater recharge potential. Work with appropriate state agencies, local tribes, and community organizations to refine and maintain thorough countywide assessments of habitat types and areas with important habitat elements. Based upon these assessments, develop a habitat protection plan that identifies areas

most in need of protection and restoration, with special consideration for anadromous fish species. Implement the habitat protection plan through the Parks, Recreation and Open Space Plan and other incentive-based, non-regulatory efforts. Where inventories are incomplete, make it a high priority to complete them. (NS-61, with revisions, POS habitat planning policy)

- Policy NS-66 Minimize habitat fragmentation and maximize connectivity of open space corridors when implementing non-regulatory efforts. (Habitat planning policies from POS)
- Policy NS-67 Work with other government jurisdictions to coordinate watershed management and habitat protection efforts for watersheds and corridors that cross jurisdictional boundaries. (NS-53, NS-63, and NS-64, with revisions)
- Policy NS-68 Ensure that the County's Parks, Recreation, and Open Space Plan is consistent with habitat inventories and habitat protection plans. (NS-66, with revisions, habitat planning from POS)
- Policy NS-69 Minimize impacts to fish and wildlife species when siting trail systems through habitat conservation areas. (NS-67, with revisions)
- Policy NS-70 Encourage public-private partnerships and voluntary efforts to protect, restore, and enhance fish and wildlife habitat. Provide information about existing government and private programs pertaining to voluntary habitat protection, enhancement, and restoration. (Goal 28, NS-78 and NS-79, with revisions)
- Policy NS-71 Participate in efforts to resolve the low dissolved oxygen challenges facing Hood Canal. (new)

Goal 14. Protect anadromous fish runs in Kitsap County using appropriate regulatory means. (Goal 30, with revisions)

- Policy NS-72 Give special consideration to the protection of anadromous fish species when determining land use and zoning designations, and when developing and applying development regulations. Consider the relative importance of a stream's fisheries resource. (NS-59, with revisions)

Goal 15. Protect and restore anadromous fish runs in Kitsap County using appropriate non-regulatory means. (Goal 30, with revisions)

- Policy NS-73 Restore local salmon populations by coordinating activities of the East Kitsap Lead Entity and participating in activities of the Hood Canal Lead Entity. (POS habitat planning policy)

- Policy NS-74 Develop and implement recovery plans for anadromous fish and other listed species under the Federal Endangered Species Act. Work with appropriate state and federal agencies, local tribes, and community organizations and adjacent jurisdictions to identify deficiencies in County programs and regulations. (NS-71, with revisions, POS habitat planning policy)
- Policy NS-75 Work with resource agencies, tribes, and others to inventory nearshore areas, prioritize and implement restoration projects. (Goal 17 and NS-40, NS-76, with revisions)
- Policy NS-76 Work with resource agencies, local tribes, and others to inventory, prioritize, and restore fish blockages, degraded stream reaches, and wetlands. (NS-76, with revisions)
- Policy NS-77 Support and coordinate volunteer stream and wetland restoration and preservation efforts. (NS-46, with revisions)

Goal 16. Develop and implement watershed plans to improve water resource management and implement improvements for ground- and surface water quality and quantity in cooperation with neighboring jurisdictions, tribes, and interested citizens. (Goal 35)

- Policy NS-78 Implement plans created to improve water resource management and monitoring, including the recommendations of the proposed Kitsap Peninsula (WRIA 15) Watershed Plan and Kitsap County Groundwater Management Plan, using resources available to accomplish higher priority actions first. Use watershed plans as a means of identifying projects with a broad base of community support and coordinating with neighborhood jurisdictions. (Goal 11, SW-11 and NS-17, with revisions)



- Policy NS-79 Coordinate with other jurisdictions, agencies, and private landowners to reduce the impacts of non-point source pollution upon aquatic resources by implementing the recommendations of approved watershed action plans. Where appropriate, recommendations that apply to all watersheds should be implemented on a countywide basis. (NS-38, NS-42, and NS-75, with revisions)

Goal 17. Develop a funding strategy and financing plan that uses a mix of local, state, federal and private funds to achieve conservation and restoration priorities. (new)

- Policy NS-80 Develop locally-controlled long-term funding source(s) for natural resource protection and enhancement. Utilize these funds to the maximum extent possible to leverage grant funds. (new)
- Policy NS-81 Coordinate with Ecology, Kitsap Public Utility District, Kitsap County Health District, area tribes, and other jurisdictions and government agencies to pursue funding for water resource management efforts. (NS-23, with revisions)

Goal 18. Comprehensively monitor water resources through non-regulatory means to ensure their long-term viability. (Goal 9, with revisions)

- Policy NS-82 Ensure that local water resources are comprehensively monitored, paying special attention to aquifer recharge areas, groundwater levels, stream flows, and saltwater intrusion. Maintain a countywide water quality monitoring program. (Goal 9 and NS-45, with revisions)

Goal 19. Comprehensively manage water resources primarily through non-regulatory means to ensure their long-term viability. (Goal 9, with revisions)

- Policy NS-83 Adequately maintain groundwater quantity to avoid saltwater intrusion and to protect in-stream flows for anadromous fish populations. Utilize BAS to determine desired streamflows and determine means of achieving those flows. (NS-26, with revisions)
- Policy NS-84 Seek opportunities to use reclaimed water for wetland augmentation, irrigation, stream enhancement, and aquifer replenishment. (NS-21, with revisions)
- Policy NS-85 Take immediate action to correct or limit saltwater intrusion in areas with evidence of intrusion. (NS-22, with revisions)
- Policy NS-86 Coordinate actions of the Kitsap County Surface and Stormwater Management Program with other agencies and jurisdictions to improve runoff quality and reduce runoff flow rates. Utilize a basin approach to stormwater facility planning. (Goal 18 and policy NS-43, with revisions)
- Policy NS-87 Ensure all County-owned stormwater facilities and culverts are properly designed, construction and maintained to reduce the occurrence of flooding. (Goal 23, with revisions)

- Policy NS-88 Employ best management practices in the County’s use of herbicides and pesticides near surface waters or drainage ditches. (NS-32, with revisions)

- Policy NS-89 Work with Kitsap Conservation District to encourage implementation of farm management plans that limit livestock access to streams and wetlands. (NS-41, with revisions)

- Policy NS-90 Encourage the County’s Solid Waste Division to address agricultural and forestry technical assistance, on-site sewage inspections, boater waste reduction, and other source control-related activities. (NS-44, with revisions)

- Policy NS-91 Educate County residents and businesses about the natural environment and the benefits of healthy surface and groundwater resources. (Goal 12 and NS-47, with revisions)

Deleted Natural Systems Goals and Policies

Goal/Policy Number	Subject	Reason for Dropping
NS-18	Sand and gravel mines.	Too specific – intent is captured within other aquifer recharge goals and policies.
NS-19	Studying septic systems related to aquifer recharge.	Studies have been completed.