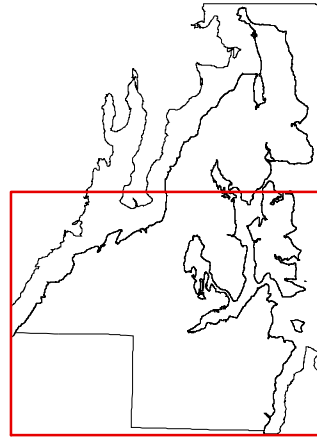


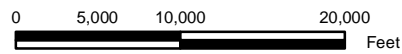
# Southern Kitsap County

## Development Capacity Within UGAs Alternative 3

- Parcels with Additional Development Capacity
- Urban Growth Area Boundary
- Incorporated City Limits



Map Date: August 16, 2006



This map was created from existing map sources, not from field surveys. While great care was taken in using the most current map sources available, no warranties of any sort, including accuracy, fitness, or merchantability accompany this product. The user of this map assumes responsibility for determining its suitability for its intended use.  
**\*THIS MAP IS NOT A SUBSTITUTE FOR FIELD SURVEY\***  
 Created for the purposes of 10-Year Comprehensive Planning Process

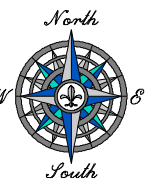
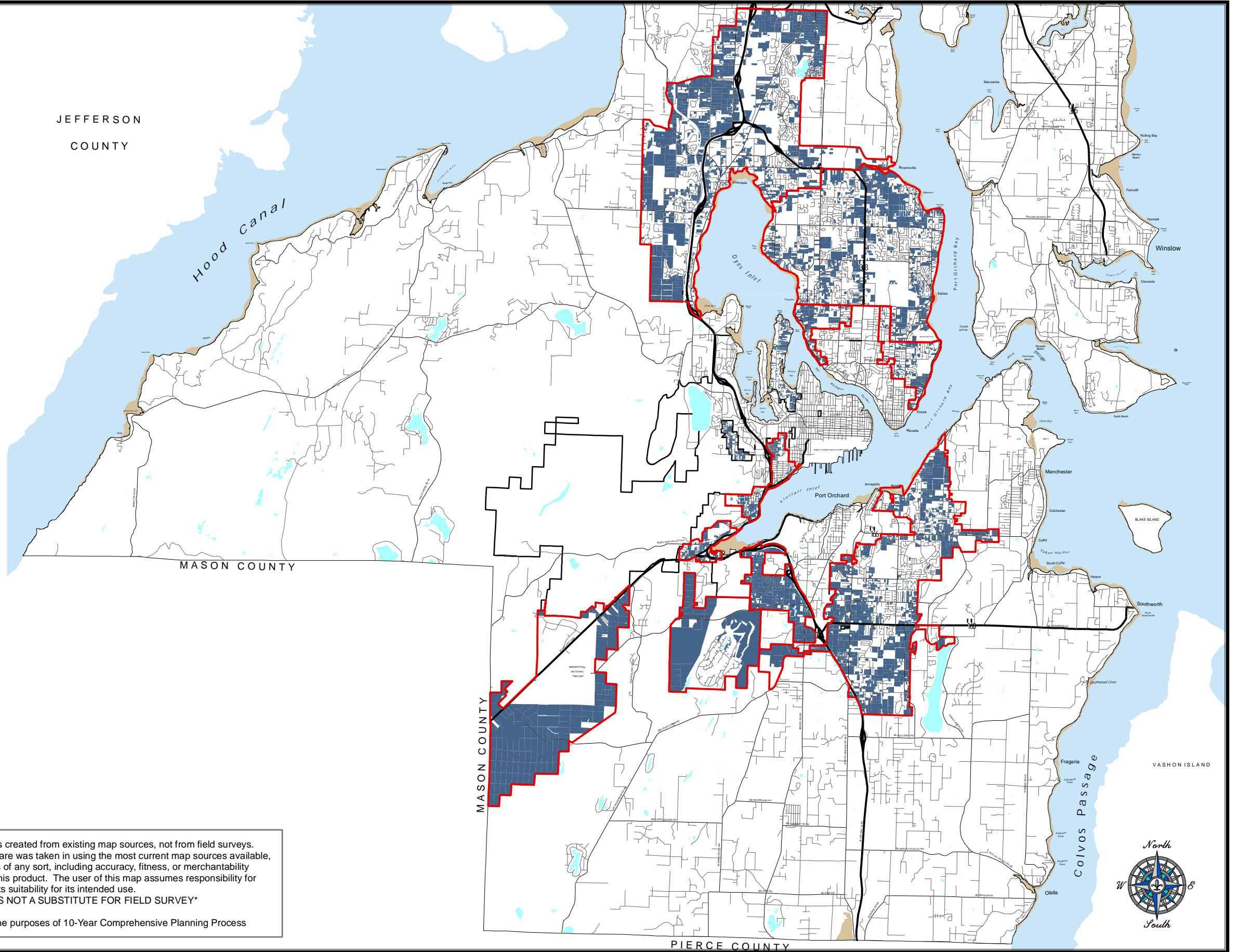


Figure 3.2-9. Development Capacity Within UGAs - Alternative 3 South