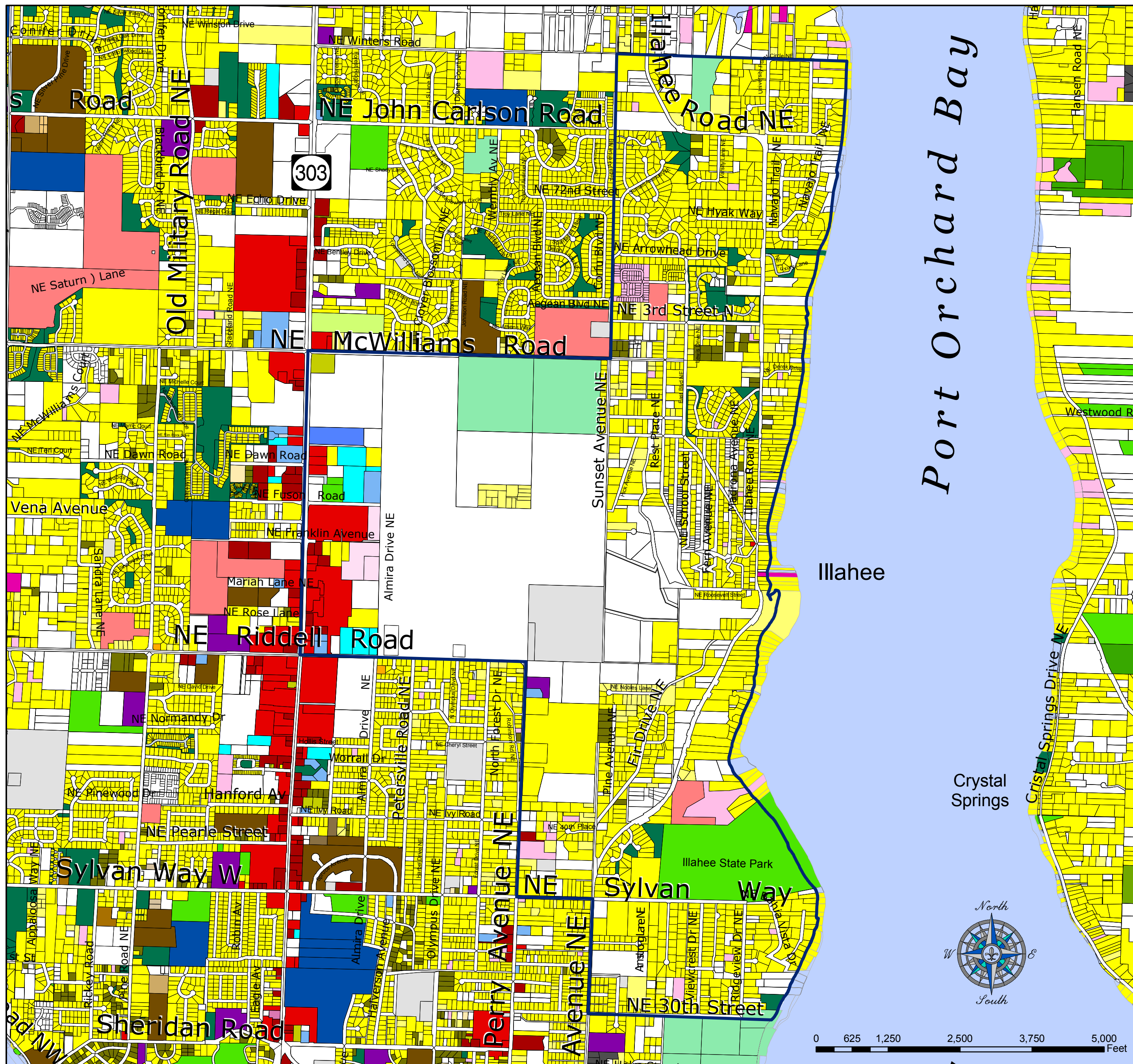


Illahee Community Center - Land Use



	Illahee Community Center		Commercial - Retail
	Tidelands		Commercial - Service
	Tax Parcel		Heavy Industrial
	Single Family Residence		Light Industrial
	Mobile Home - Real Property		Miscellaneous Services
	Duplex		Common Area
	Triplex		Agricultural - Open Space
	Fourplex		Forest Land - Current Use
	5-9 units		Open Space - General
	15-19 units		Open Space - Timber
	20-29 units		Parking
	30-39 units		Parks/Recreation
	40-49 units		School
	50+ units		Transportation
	Shed/Garage		Utilities
	Mobile Home Community		Undeveloped Land
	Hotel/Motel		Unassigned property class
	Cabin		Salt Water
	Church		
	Institutional Lodging		

This map was created from existing map sources, not from field surveys. While great care was taken in using the most current map sources available, no warranties of any sort, including accuracy, fitness, or merchantability accompany this product. The user of this map assumes responsibility for determining its suitability for its intended use.

*** THIS MAP IS NOT A SUBSTITUTE FOR FIELD SURVEY ***

DRAFT

Map Date: February, 2008

Kitsap County Department of
Community Development
614 Division Street, MS-36
Port Orchard, Washington 98366
VOICE (360) 337-7181 * FAX (360) 337-4925

