

APPENDIX H: ZONING MAPS & KEYPORT LAND USE CAPACITY ANALYSIS

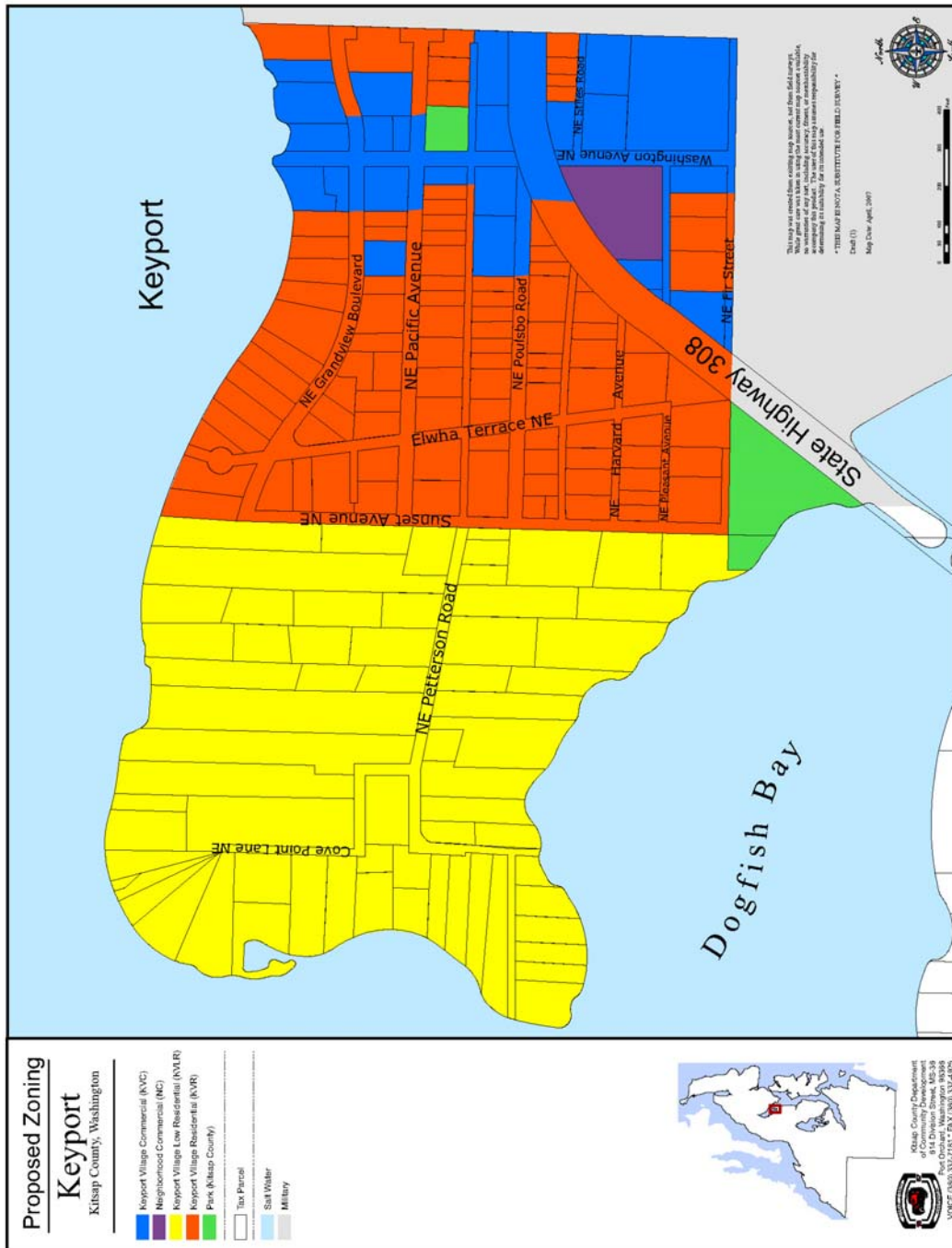


Figure H.1 Keyport Proposed Zoning Map

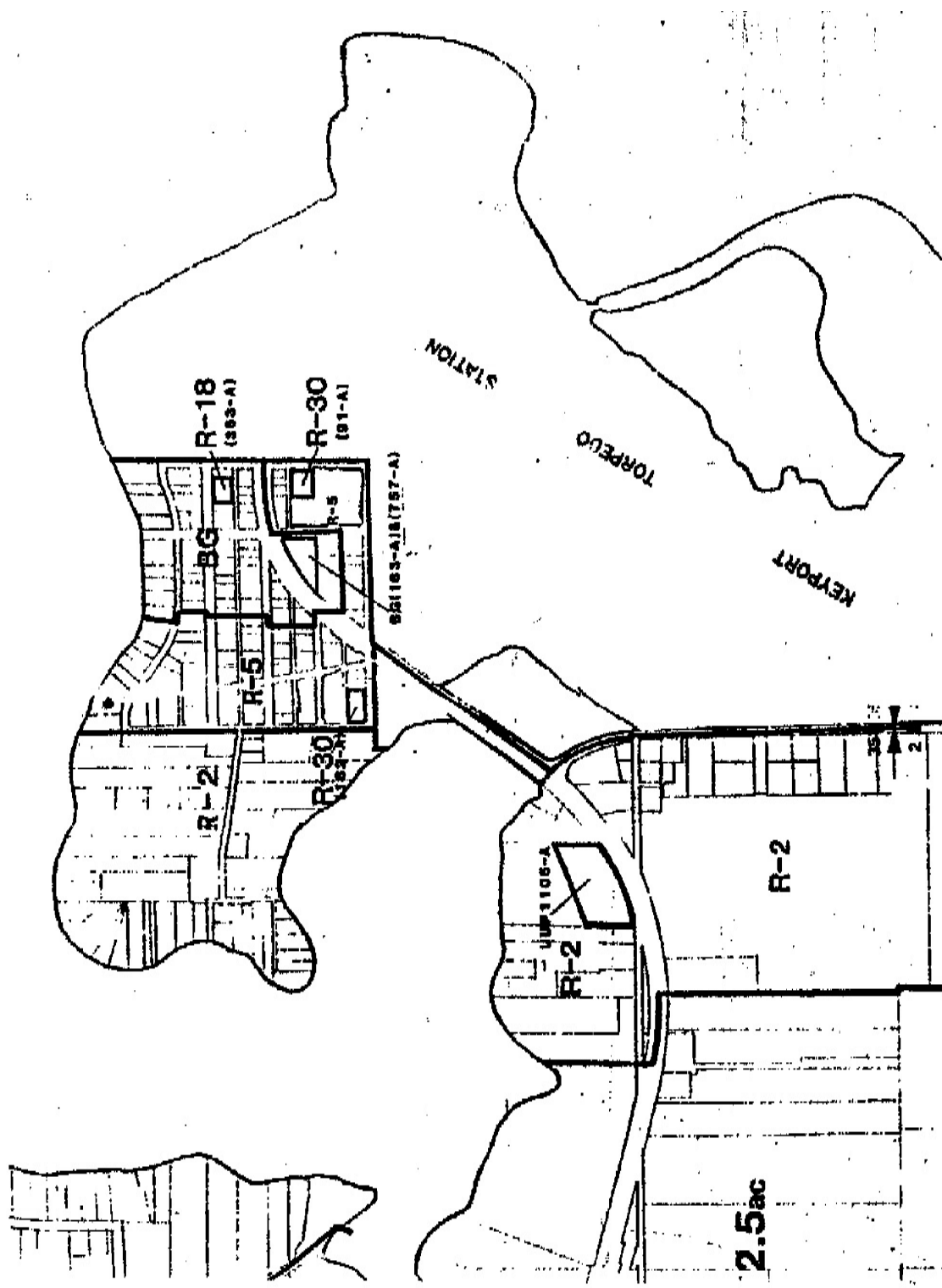


Figure H.2 Keyport Historical Zoning Map (Kitsap County 1978 Zoning)

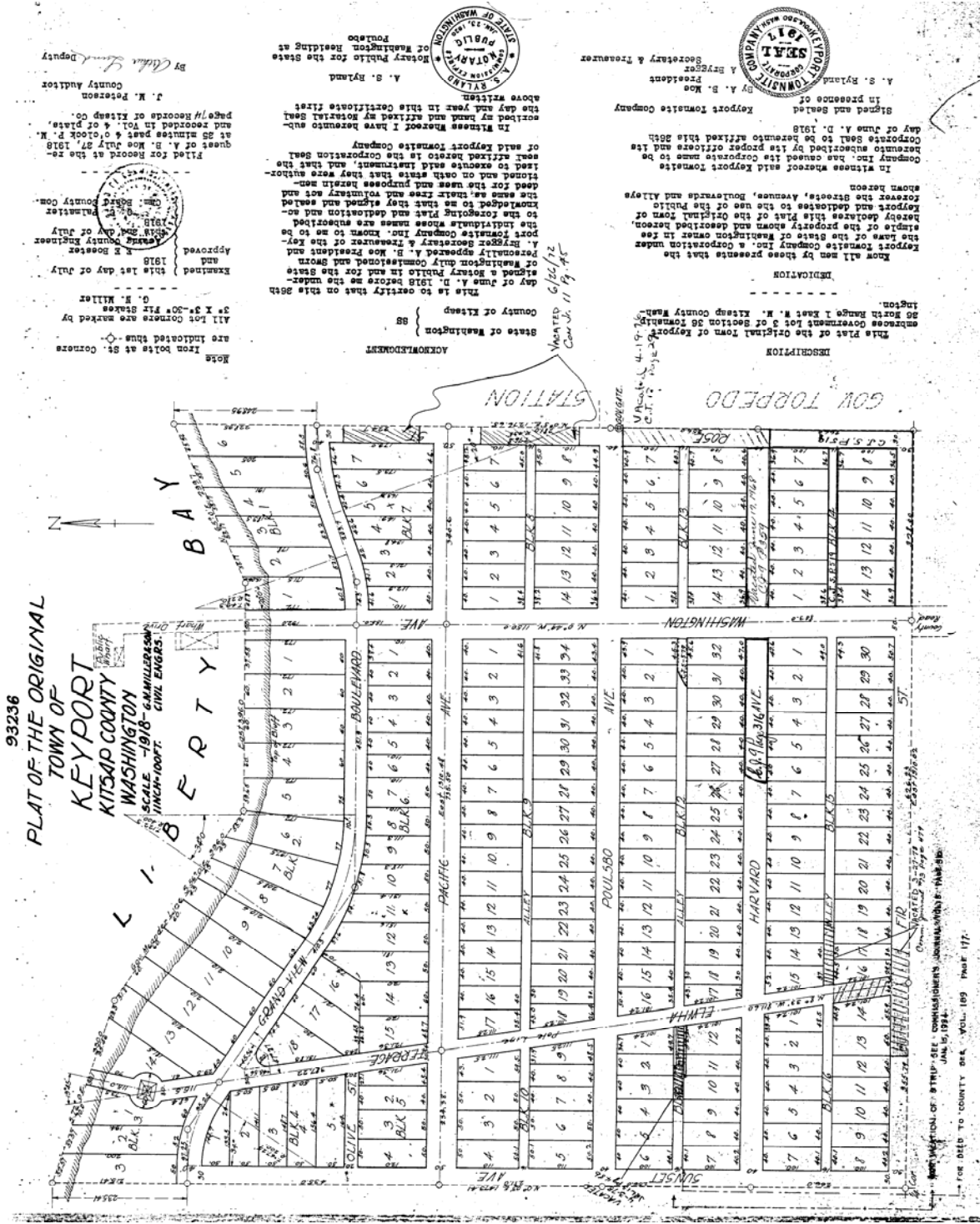


Figure H.3 1918 Original Plat of Town of Keyport

Appendix H
Keyport Land Capacity Analysis
 Keyport Village Low-Residential (KVLR) zone at 2 dwelling units per acre.

VACANT

	Keyport Village Low Residential <i>2 Dwi/Ac</i>	Keyport Village Residential <i>5 Dwi/Ac</i>	Keyport Village Commercial	Keyport Neighborhood Commercial	Park	Sub Total
Total # of Vacant Parcels	7	5	2	0	0	14
Total Vacant Acres per Zone	2.83	0.54	0.51	0	0	3.88
Redevelopable Parcels	7	5	2	0	0	14
Redevelopable Acres	2.83	0.54	0.51	0	0	3.88
Additional Dwelling Unit Capacity	7	5				12

UNDERUTILIZED

	Keyport Village Low Residential <i>2 Dwi/Ac</i>	Keyport Village Residential <i>5 Dwi/Ac</i>	Keyport Village Commercial	Keyport Neighborhood Commercial	Park	Sub Total
Total # of Underutilized Parcels	58	89	26	1	3	177
Total Underutilized Acres per Zone	28.79	18.54	7.7	1.18	1.89	58.1
Redevelopable Parcels	8	6	15	0	0	29
Redevelopable Acres	8.25	2.07	3.11	0	0	13.43
Additional Dwelling Unit Capacity	10	6				16

TOTALS (Vacant & Underutilized)

	Keyport Village Low Residential <i>2 Dwi/Ac</i>	Keyport Village Residential <i>5 Dwi/Ac</i>	Keyport Village Commercial	Keyport Neighborhood Commercial	Park	Total
Total # of Parcels (Keyport)	65	94	28	1	3	191
Total Acres per Zone (Keyport)	31.62	19.08	8.21	1.18	1.89	61.98
Redevelopable Parcels	15	11	17	0	0	43
Acres	11.08	2.61	3.62	0	0	17.31
Total Additional Dwelling Units	17	11	0	0	0	28

**Appendix H:
Keyport Land Capacity Analysis**
Keyport Village Low-Residential (KVLR) zone at 3 dwelling units per acre.

	VACANT						Sub Total
	Keyport Village Low Residential <i>3 Du/Ac</i>	Keyport Village Residential <i>5 Du/Ac</i>	Keyport Village Commercial	Keyport Neighborhood Commercial	Park		
Total # of Parcels	7	5	2	0	0		14
Total Acres per Zone	2.83	0.54	0.51	0	0		3.88
Redevelopable Parcels	7	5	2	0	0		14
Acres	2.83	0.54	0.51	0	0		3.88
Additional Dwelling Unit Capacity	7	5					12

	UNDERUTILIZED						Sub Total
	Keyport Village Low Residential <i>3 Du/Ac</i>	Keyport Village Residential <i>5 Du/Ac</i>	Keyport Village Commercial	Keyport Neighborhood Commercial	Park		
Total # of Parcels	58	89	26	1	3		177
Total Acres per Zone	28.79	18.54	7.7	1.18	1.89		58.1
Redevelopable Parcels	13	6	15	0	0		34
Acres	12.04	2.07	3.11	0	0		17.22
Additional Dwelling Unit Capacity	23	6					29

	TOTALS						Total
	Keyport Village Low Residential <i>3 Du/Ac</i>	Keyport Village Residential <i>5 Du/Ac</i>	Keyport Village Commercial	Keyport Neighborhood Commercial	Park		
Total # of Parcels	65	94	28	1	3		191
Total Acres per Zone	31.62	19.08	8.21	1.18	1.89		61.98
Redevelopable Parcels	20	11	17	0	0		48
Acres	14.87	2.61	3.62	0	0		21.1
Additional Dwelling Unit Capacity	30	11	0	0	0		41

(Intentionally Blank Page)