

KEYPORT PROPOSED DESIGN GUIDELINES



Kitsap County
Department of Community Development

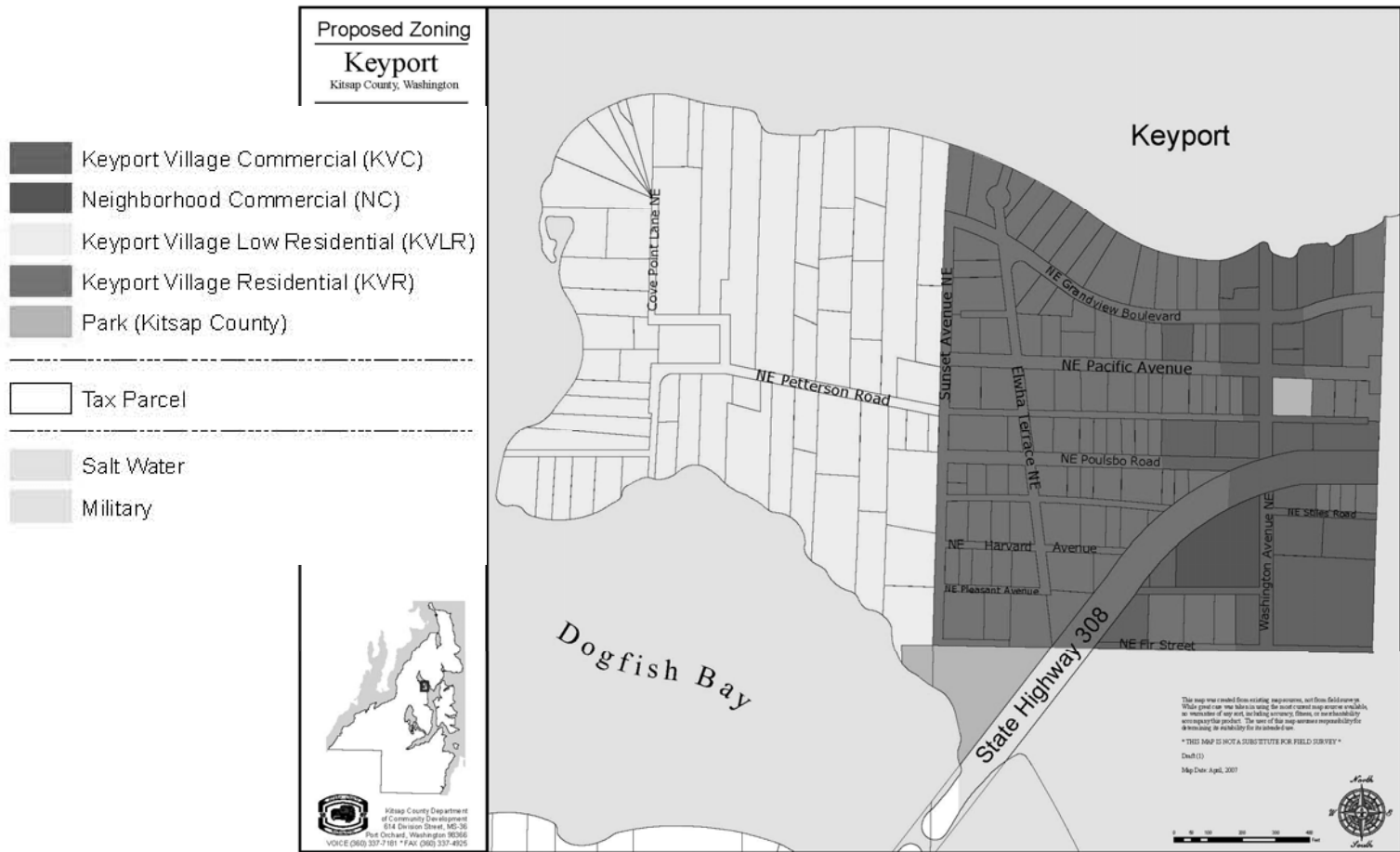
WWW.KITSAPGOV.COM/DCD



KEYPORT LAMIRD

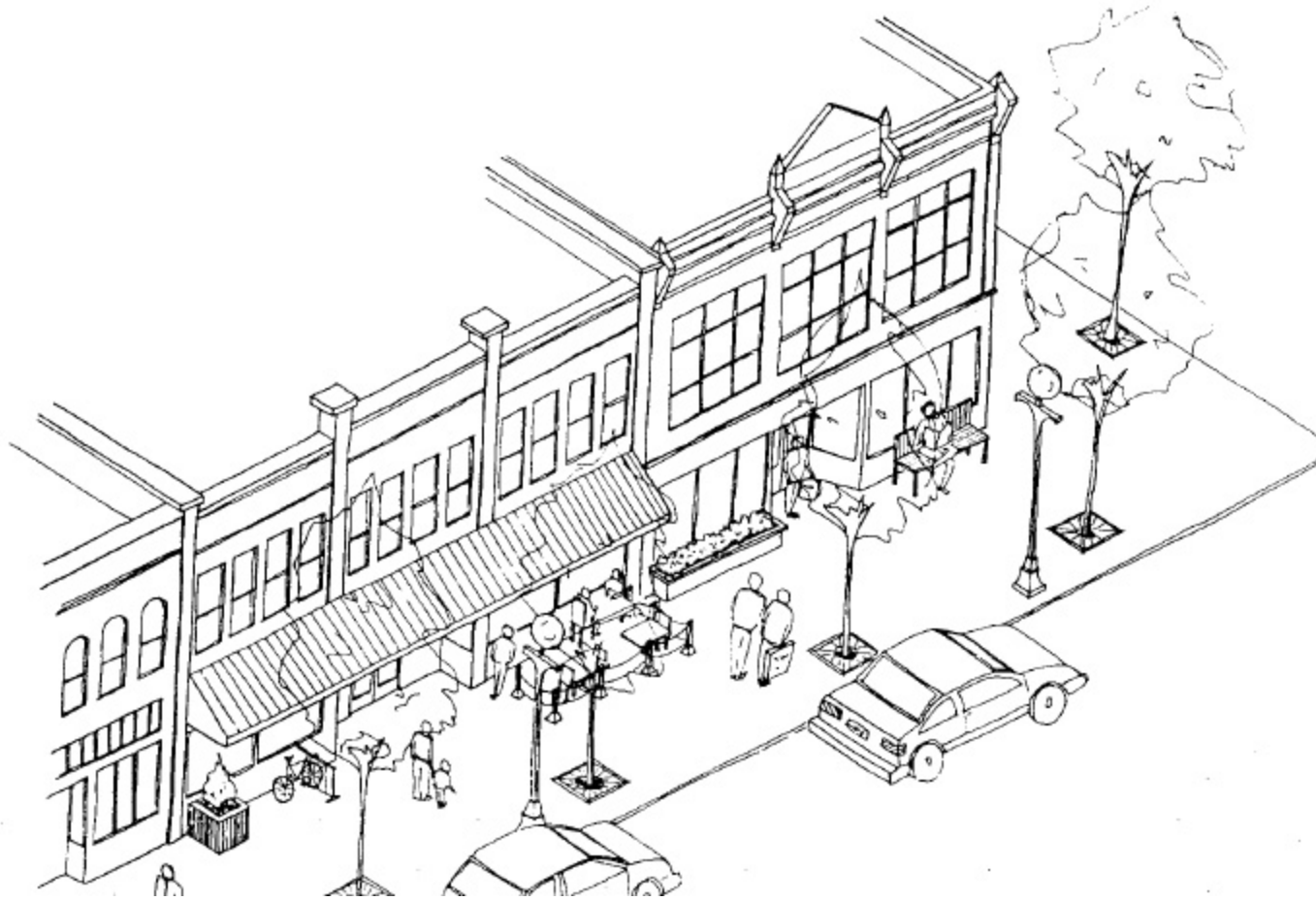
(Limited Area of More Intense Rural Development)

KEYPORT COMMUNITY PLAN - LAND USE MAP



KEYPORT DESIGN GUIDELINES

PROPOSED WASHINTON AVENUE ELEMENTS



KEYPORT DESIGN GUIDELINES

PROPOSED WASHINTON AVENUE ELEMENTS

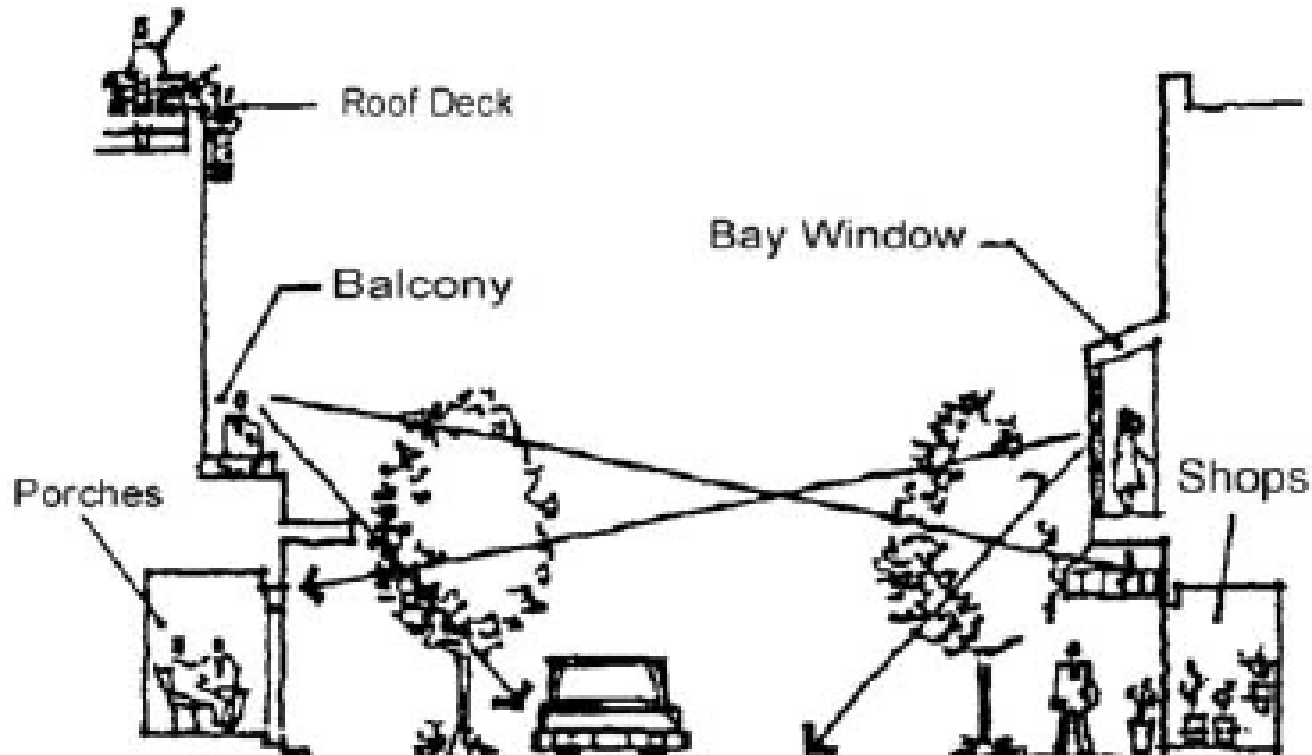
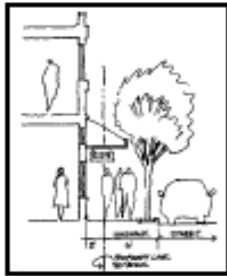


Figure 1: Building elements can enliven the street edge creating safer places to walk and congregate.

KEYPORT DESIGN GUIDELINES

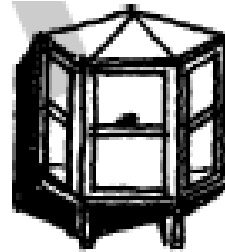
PROPOSED WASHINTON AVENUE ELEMENTS



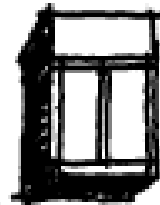
Downtown Commercial properties provide 2' of additional sidewalk area to encourage pedestrian traffic.



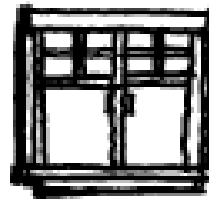
An example of awnings.



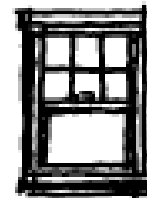
BAY



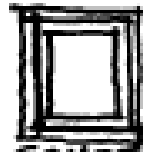
PROTECTED



CASEMENT



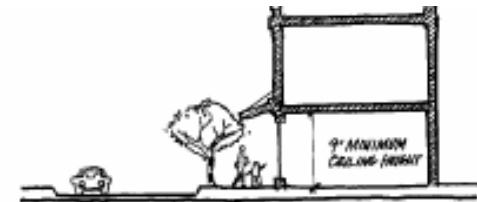
DOUBLE HUNG



SQUARE



CIRCULAR



Section through retail space



Transparent canopies provide protection from the rain but allow light to filter through.

KEYPORT DESIGN GUIDELINES

PROPOSED WASHINTON AVENUE ELEMENTS

Figure 4: Blank walls can be screened with trellises and climbing plants.

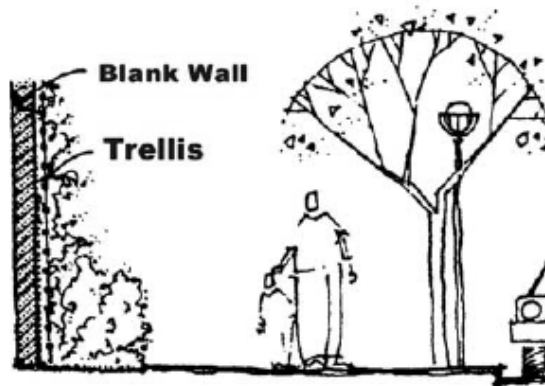


Figure 5: A planting bed and generous landscaping used to screen a blank wall.

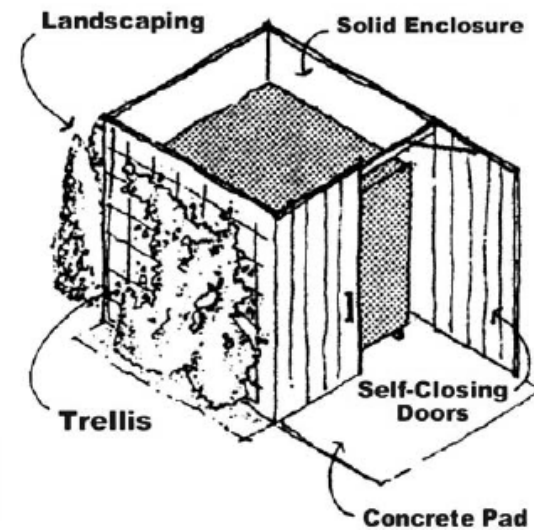
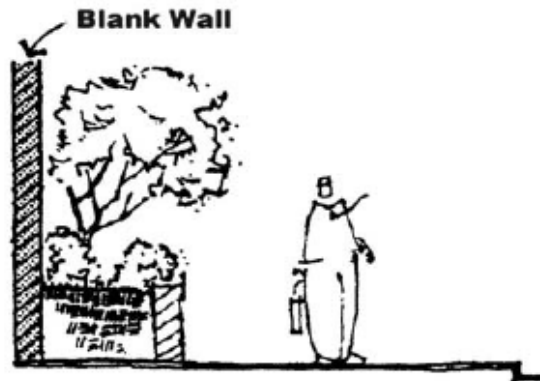


Figure 8: A well-designed screen for dumpsters.

KEYPORT DESIGN GUIDELINES

PROPOSED WASHINTON AVENUE ELEMENTS

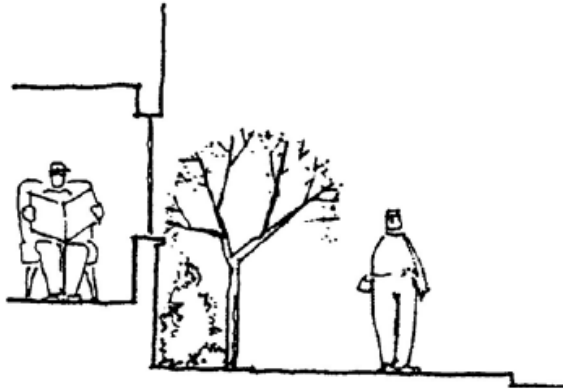


Figure 21: Where a setback from the sidewalk is small, raising the floor level up more than 4' above the sidewalks and/or providing a planting bed can provide a sufficient transition.

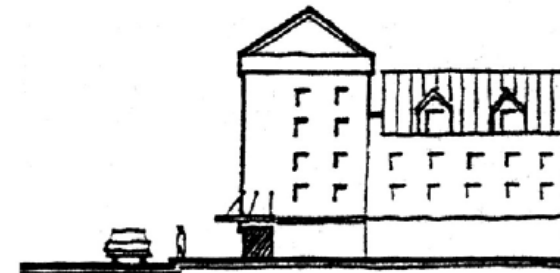
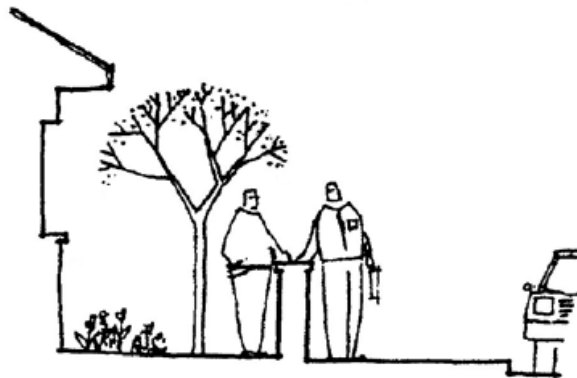
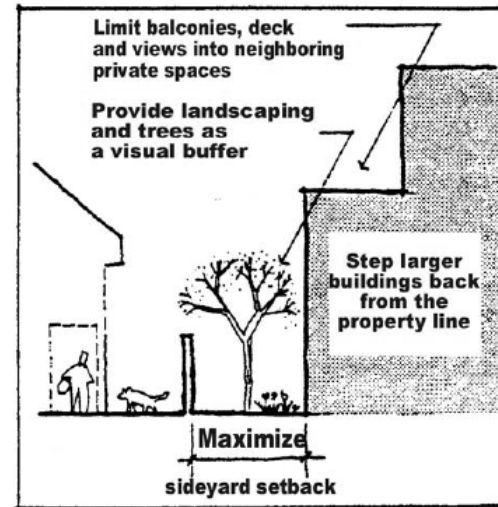
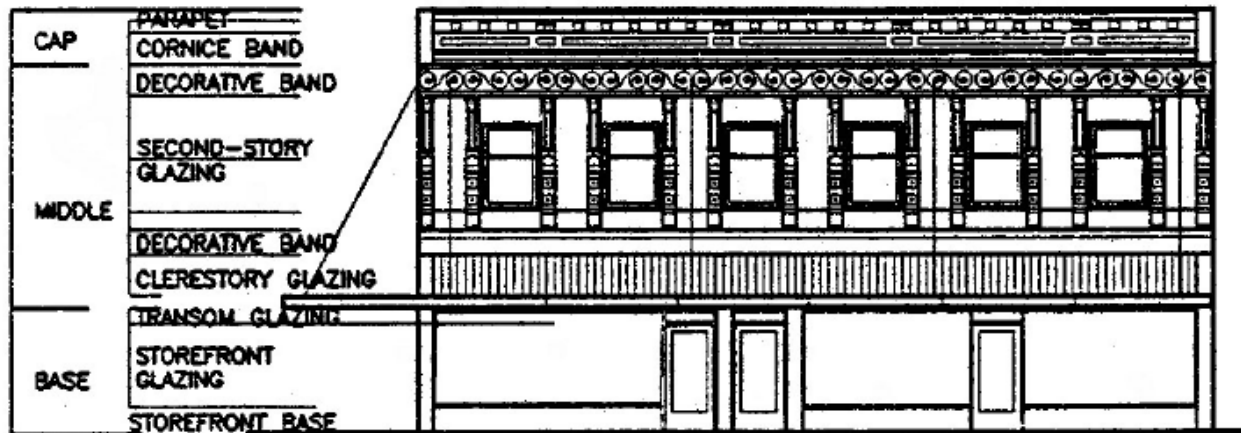
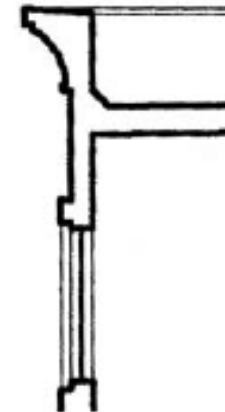
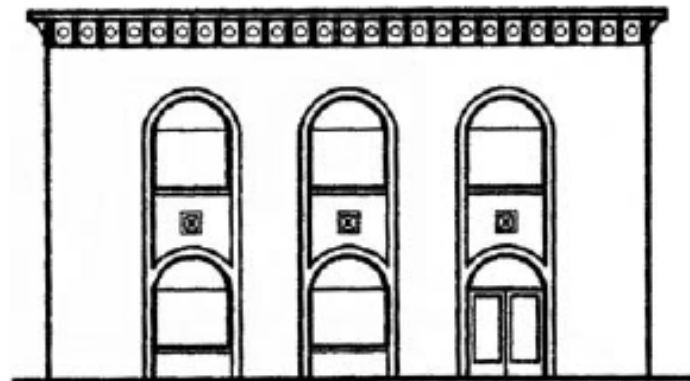
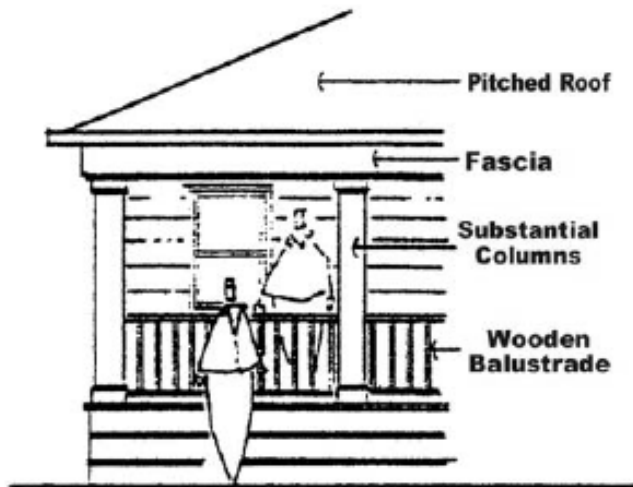


Figure 47: Emphasizing the corner at an intersection of major streets.

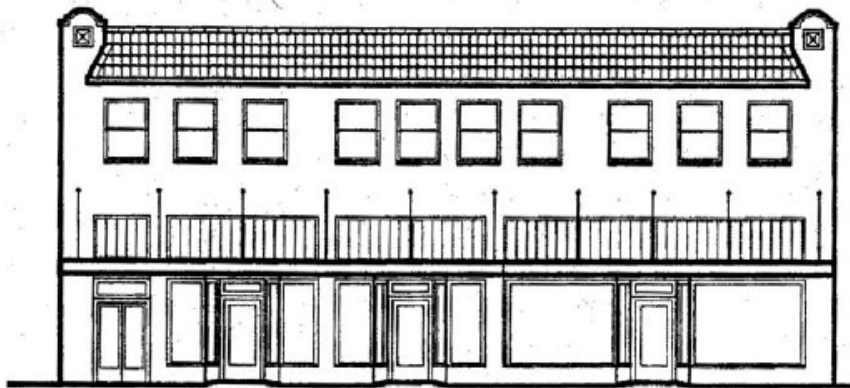
KEYPORT DESIGN GUIDELINES

PROPOSED WASHINTON AVENUE ELEMENTS

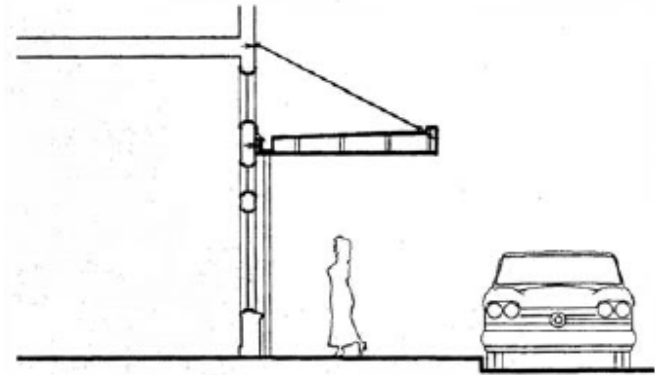


KEYPORT DESIGN GUIDELINES

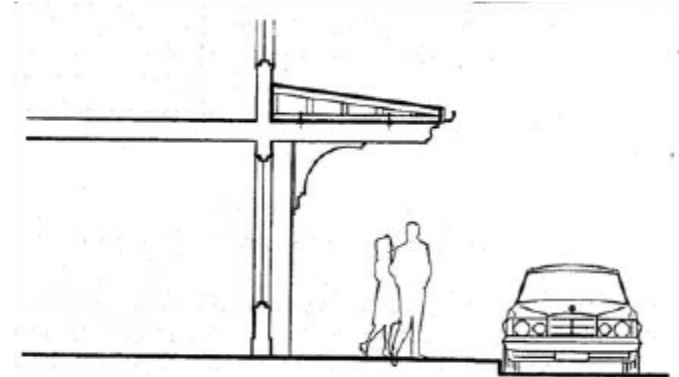
PROPOSED WASHINTON AVENUE ELEMENTS



EXISTING EXAMPLE

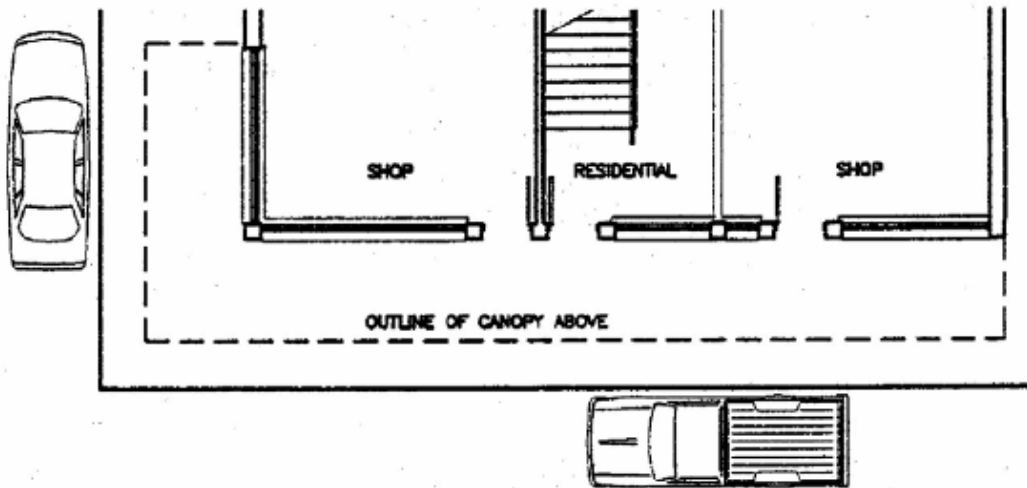
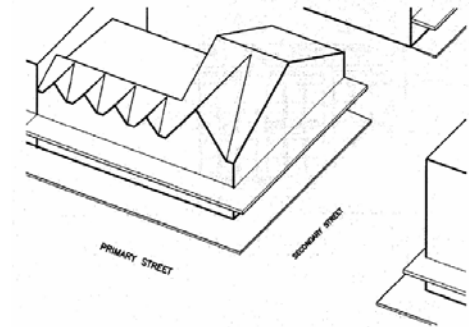
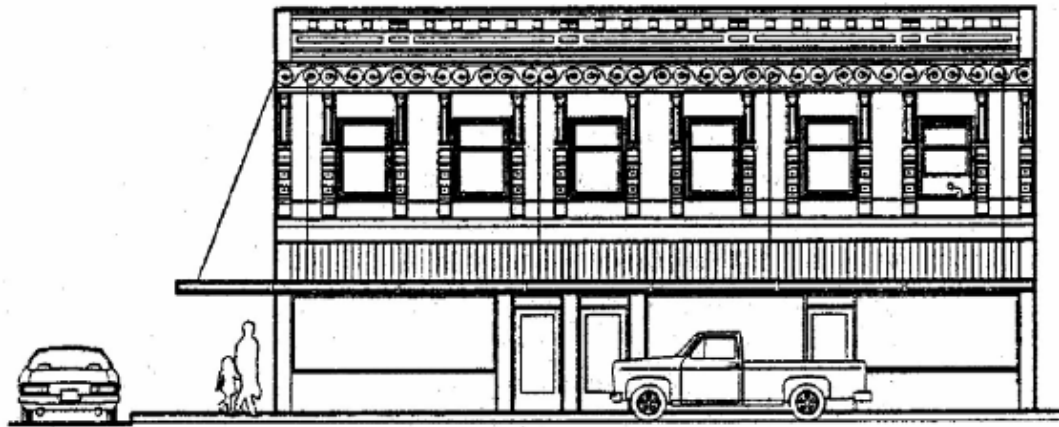


EXISTING EXAMPLE



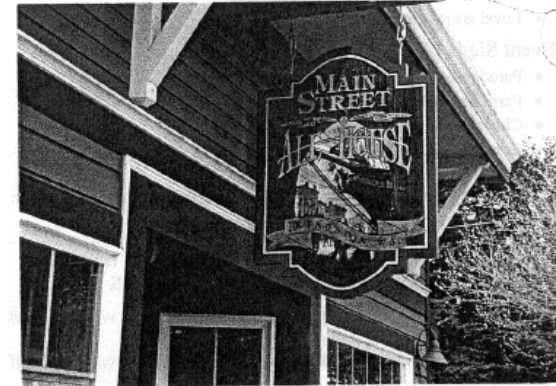
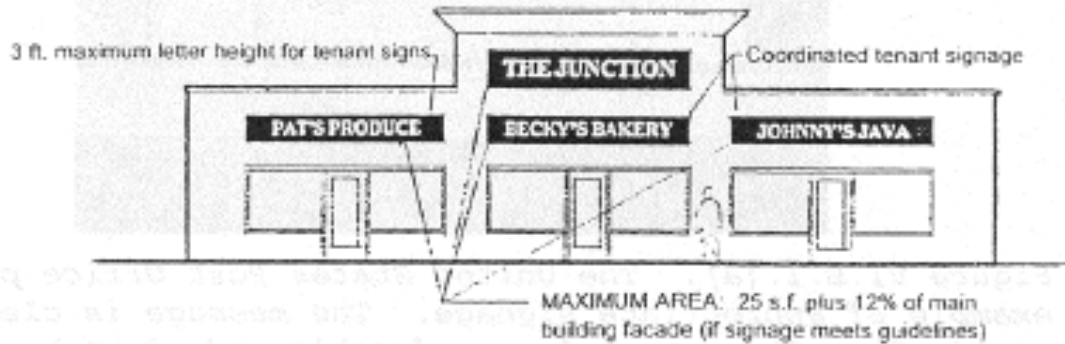
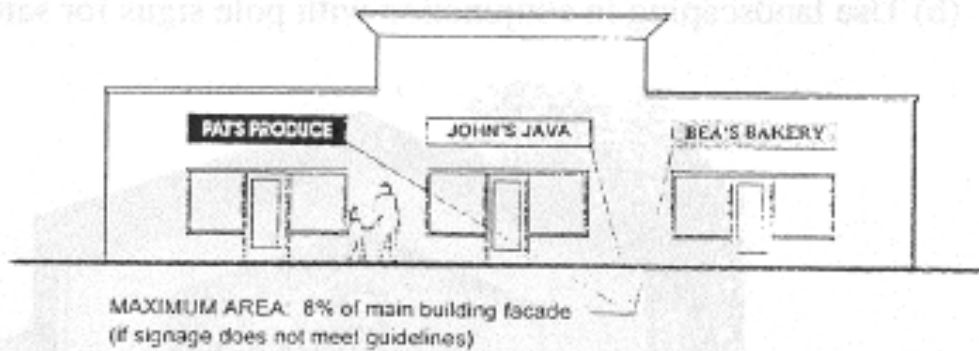
KEYPORT DESIGN GUIDELINES

PROPOSED WASHINTON AVENUE ELEMENTS



KEYPORT DESIGN GUIDELINES

PROPOSED WASHINGTON AVENUE ELEMENTS



FOR MORE INFO VISIT:

www.kitsapgov.com/dcd

James Weaver

jweaver@co.kitsap.wa.us

or

Katrina Knutson

kknutson@co.kitsap.wa.us