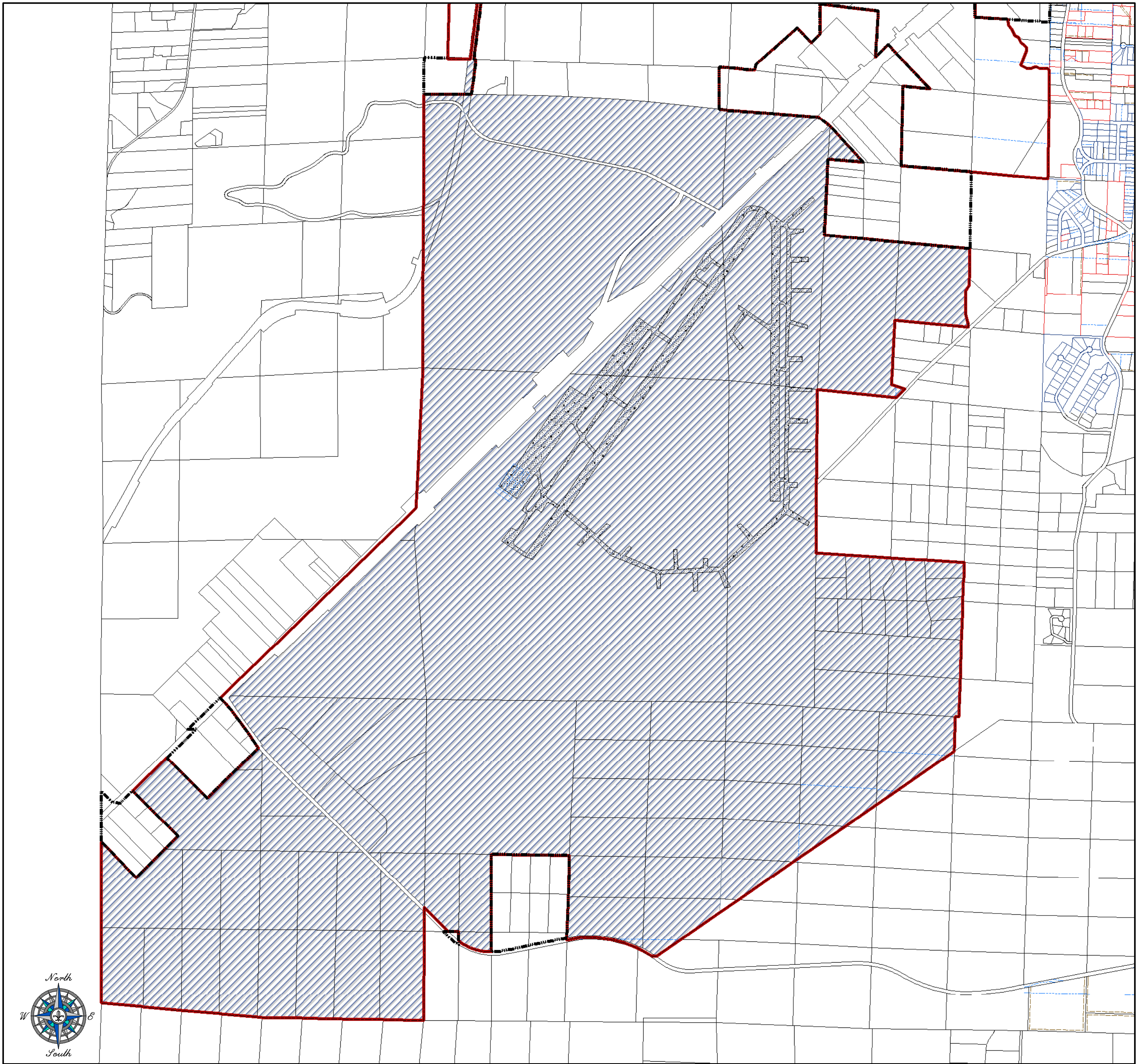


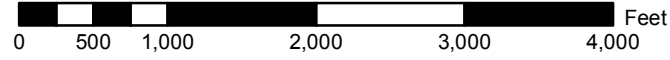
Bremerton Annexation - SKIA - South



Unincorporated Urban Growth Area	Surveyed Boundary
Incorporated City	Acreage Tax Lot
SKIA Airport Runway	Condominium Boundary
Bremerton 5057	Platted Tax Lot
	Digitized Tax Lot
	Easement
	Plat Line



Kitsap County Department of Community Development
 614 Division Street, MS-36, Port Orchard, Washington 98366
 VOICE (360) 337-7181 * FAX (360) 337-4925



**City of Bremerton Annexation
 Ordinance No. 5057
 April 1, 2009**

This map was created from existing map sources, not from field surveys. While great care was taken in using the most current map sources available, no warranties of any sort, including accuracy, fitness, or merchantability accompany this product. The user of this map assumes responsibility for determining its suitability for its intended use.

* THIS MAP IS NOT A SUBSTITUTE FOR FIELD SURVEY *

DRAFT
 Map Date: March, 2009

