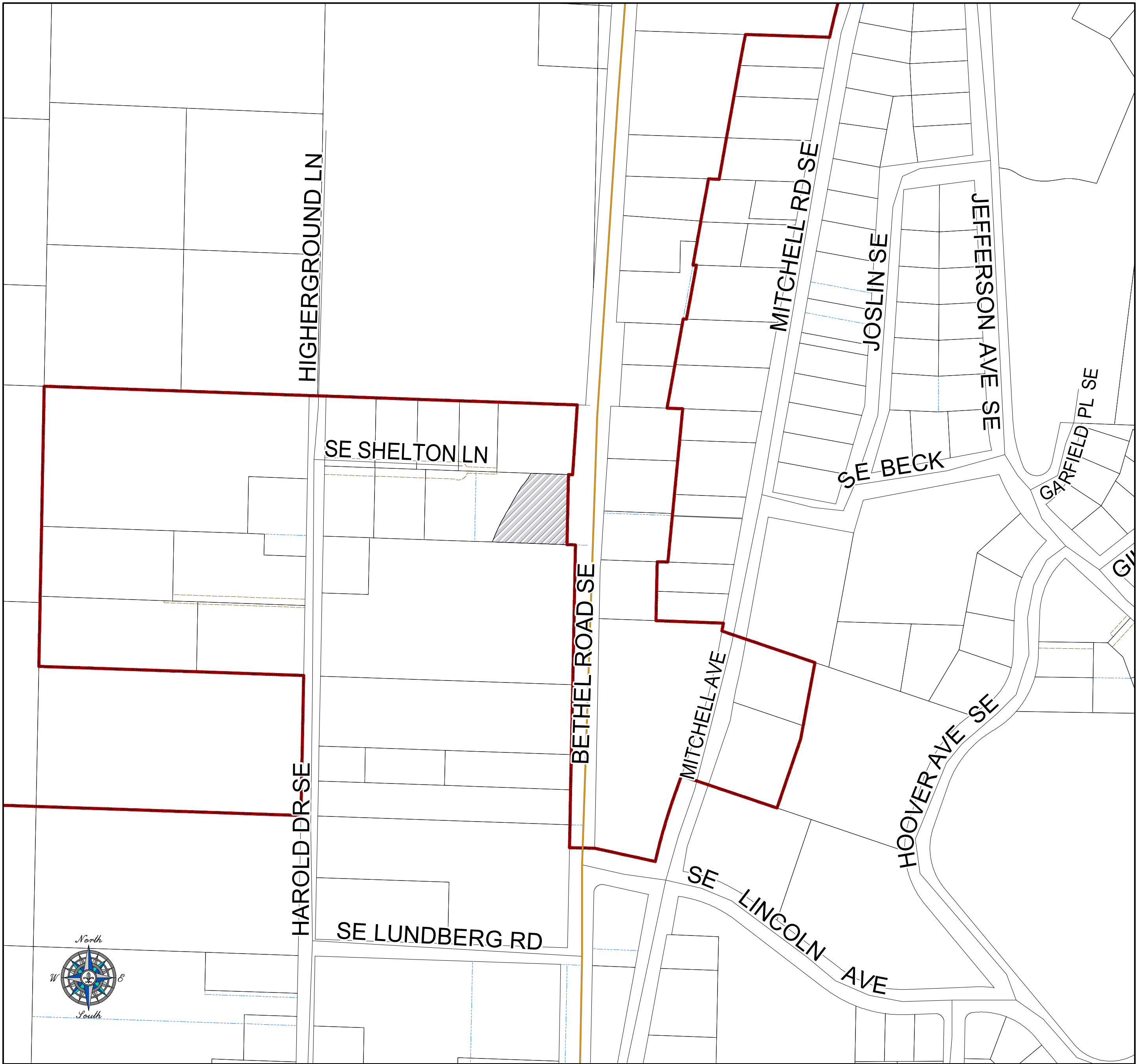


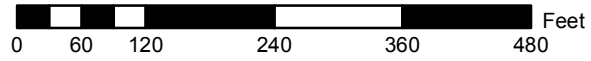
Port Orchard Annexation - Phelps



- State Highway
- Arterial
- Collector
- Easement
- Plat Line
- Tax Parcels
- Annexation Parcel



Kitsap County Department of Community Development
 614 Division Street, MS-36, Port Orchard, Washington 98366
 VOICE (360) 337-7181 * FAX (360) 337-4925



**City of Port Orchard Annexation
 Ordinance No. 034-07
 November 14, 2007**

This map was created from existing map sources, not from field surveys. While great care was taken in using the most current map sources available, no warranties of any sort, including accuracy, fitness, or merchantability accompany this product. The user of this map assumes responsibility for determining its suitability for its intended use.

* THIS MAP IS NOT A SUBSTITUTE FOR FIELD SURVEY *

DRAFT
 Map Date: September, 2007

