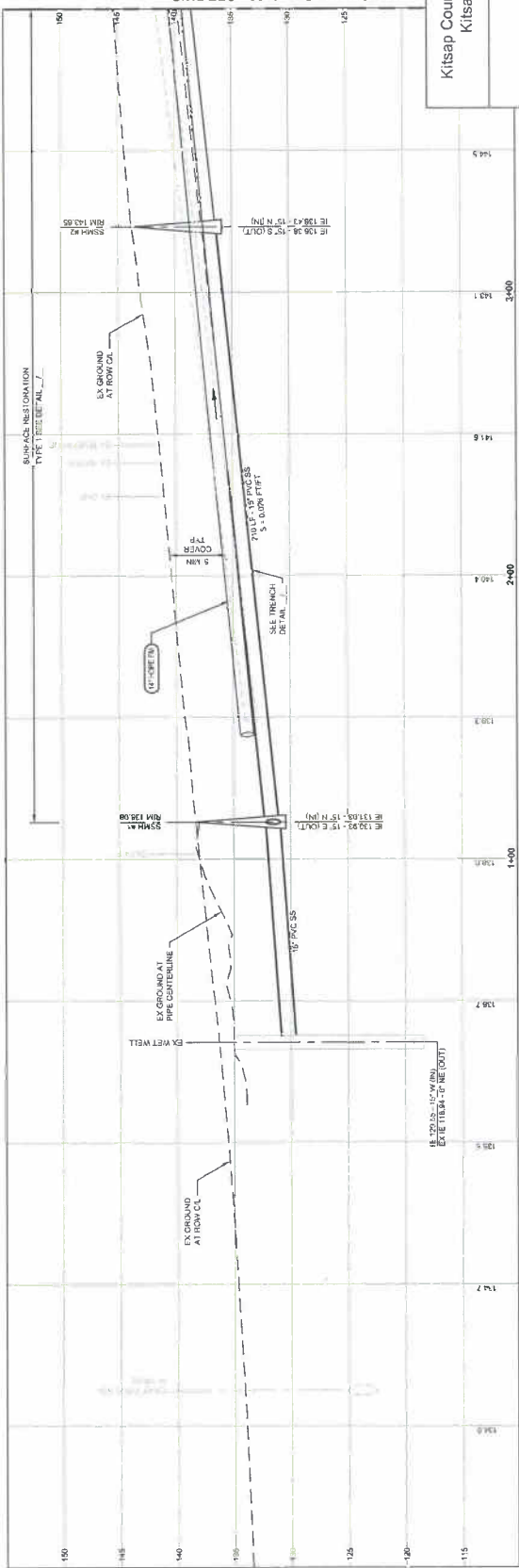
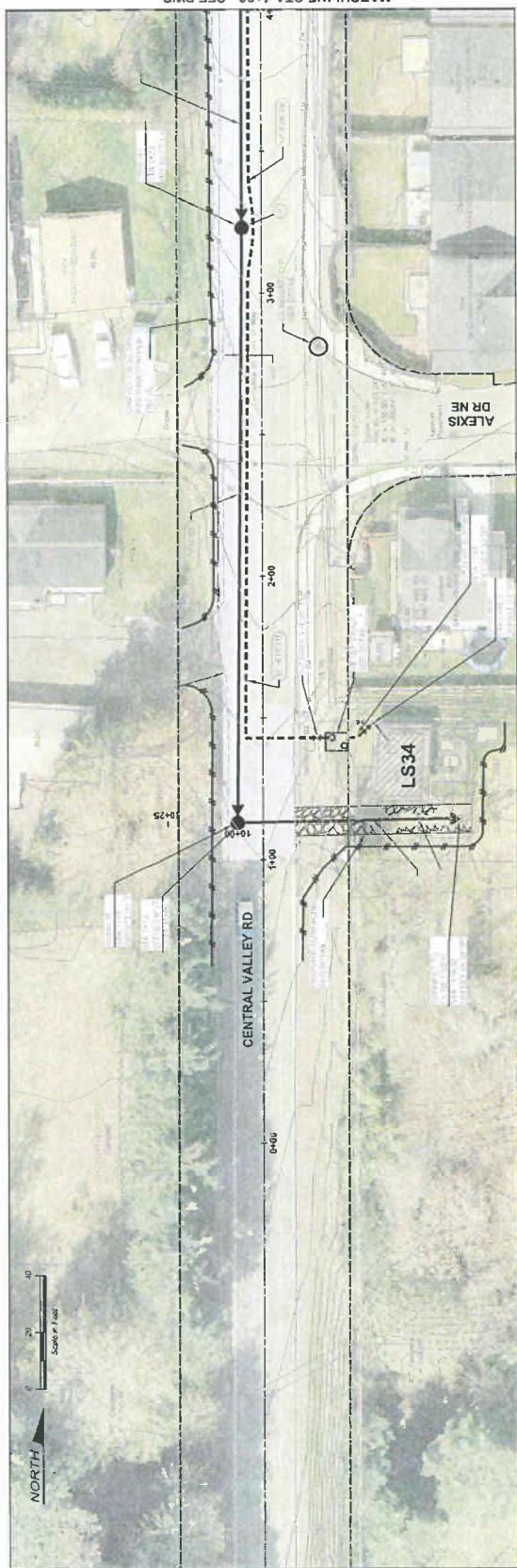


APPENDIX B
GEOTECHNICAL TECHNICAL DATA

THIS PAGE INTENTIONALLY LEFT BLANK

NOTES

1. ALL EXISTING UTILITIES AND NECESSARY CONSTRUCTION SHALL BE LOCATED AS SHOWN ON THIS PLAN. EXISTING UTILITIES SHALL BE PROTECTED AND MAINTAINED THROUGHOUT CONSTRUCTION.
2. EXISTING UTILITIES SHALL BE PROTECTED AND MAINTAINED THROUGHOUT CONSTRUCTION.
3. EXISTING UTILITIES SHALL BE PROTECTED AND MAINTAINED THROUGHOUT CONSTRUCTION.
4. EXISTING UTILITIES SHALL BE PROTECTED AND MAINTAINED THROUGHOUT CONSTRUCTION.
5. EXISTING UTILITIES SHALL BE PROTECTED AND MAINTAINED THROUGHOUT CONSTRUCTION.



LEGEND

- B-1** Boring Designation and Approximate Location
- B-1** Boring Designation (Pr. 11 E) — Projected Distance
- Standard Penetration Test
- Blow Count on 1' — Blow Count Area Driven
- Approx. Geologic Contact
- Top of Glacially Overlaid Soil
- Water Level During Drilling
- Geologic Unit Designation
- USCS Symbol
- Bottom of Boring
- Date Completed 03-28-07



NOTES

1. Figures adapted from client file: P:\B-10045-SCOTT_CYPRI_0007.dwg prepared by BHC Consultants, LLC, dated September 2008.
2. See Figure 5 for geologic unit explanation.

Kitsap County South Central Force Main
Kitsap County, Washington

SCHEDULE 1
ALIGNMENT AND EXPLORATION
PLAN AND PROFILE

November 2008
21-1-12212-005

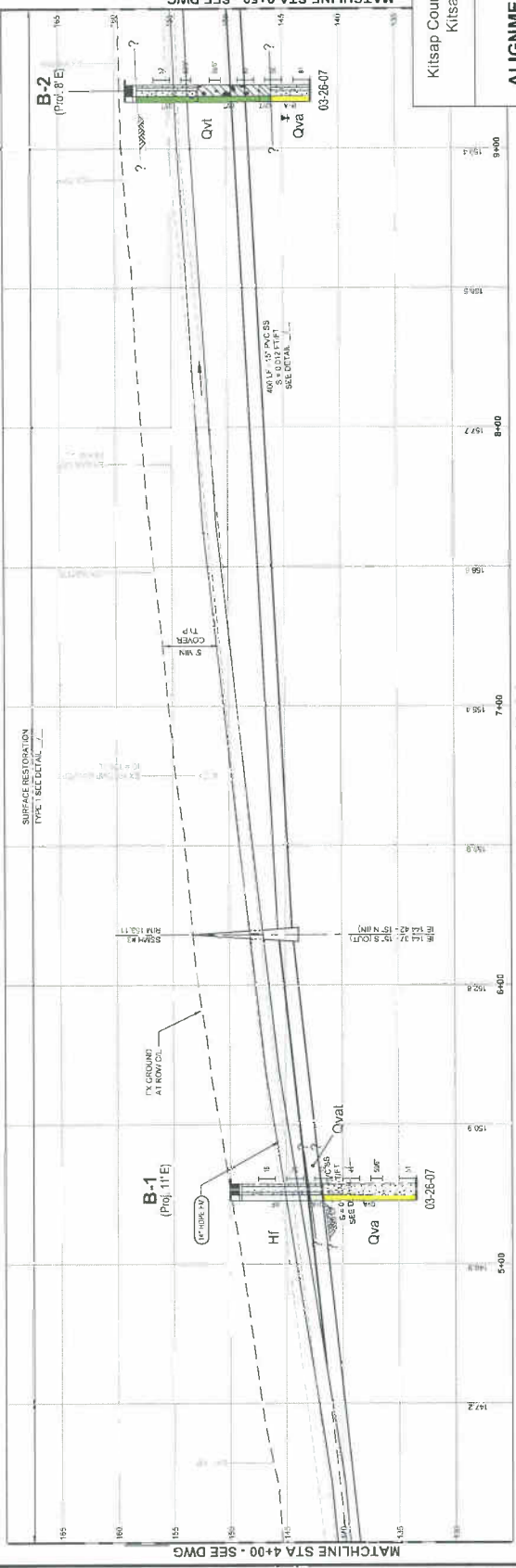
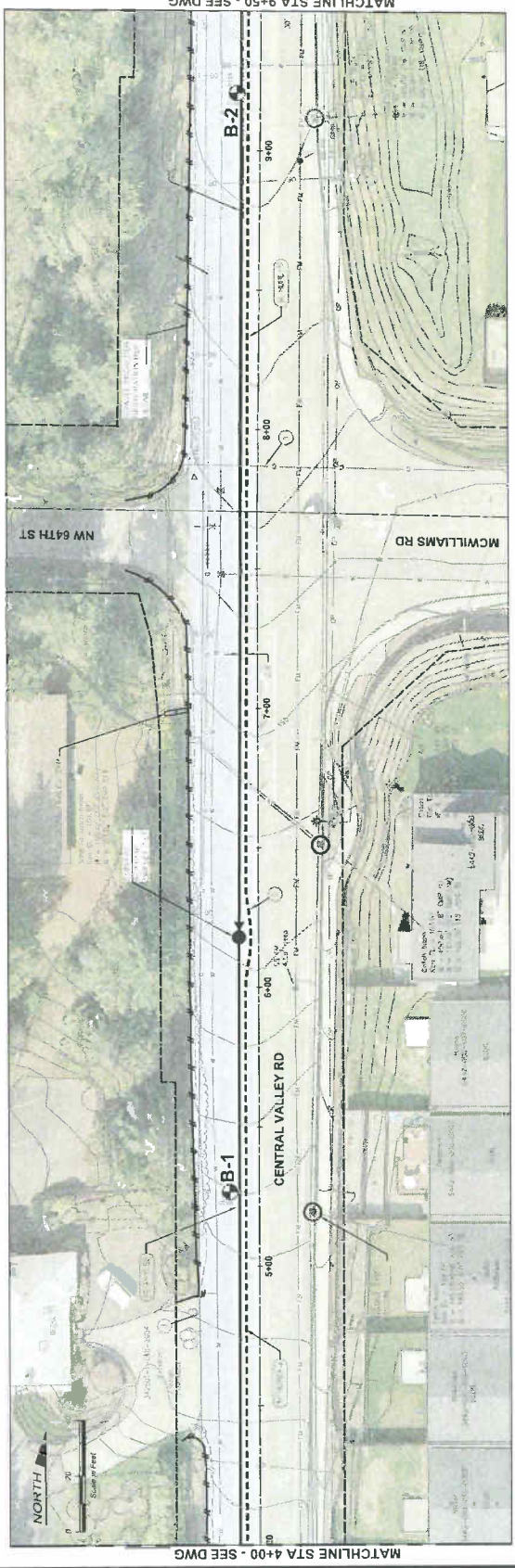
SHANNON & WILSON, INC.
Geotechnical and Environmental Consultants

FIG. 2
Sheet 1 of 13

Schedule 1 Central Valley Road Stationing

NOTES

- 1. APPROXIMATE LOCATION OF EXISTING CONDUITS TO BE REMOVED TO ALLOW FOR CONSTRUCTION OF THE MAINS ACTUAL LOCATION FROM TO CONSTRUCTION.
- 2. DEPENDS ON THE PIPING MATERIAL, MANUFACTURER, AND SIZE.
- 3. HALF STRENGTH OVERLAY.



LEGEND

B-1 Borehole Designation and Approximate Location

B-1 Borehole Designation (Proj. 11'E) — Projected Distance



NOTES

- 1. Figure adapted from client file "Geologic Profile of Central Valley Road Stollaring" prepared by R/C Consultants, LLC, dated September 2008.
- 2. See Figure 5 for geologic unit explanation.

Kitsap County South Central Force Main
Kitsap County, Washington

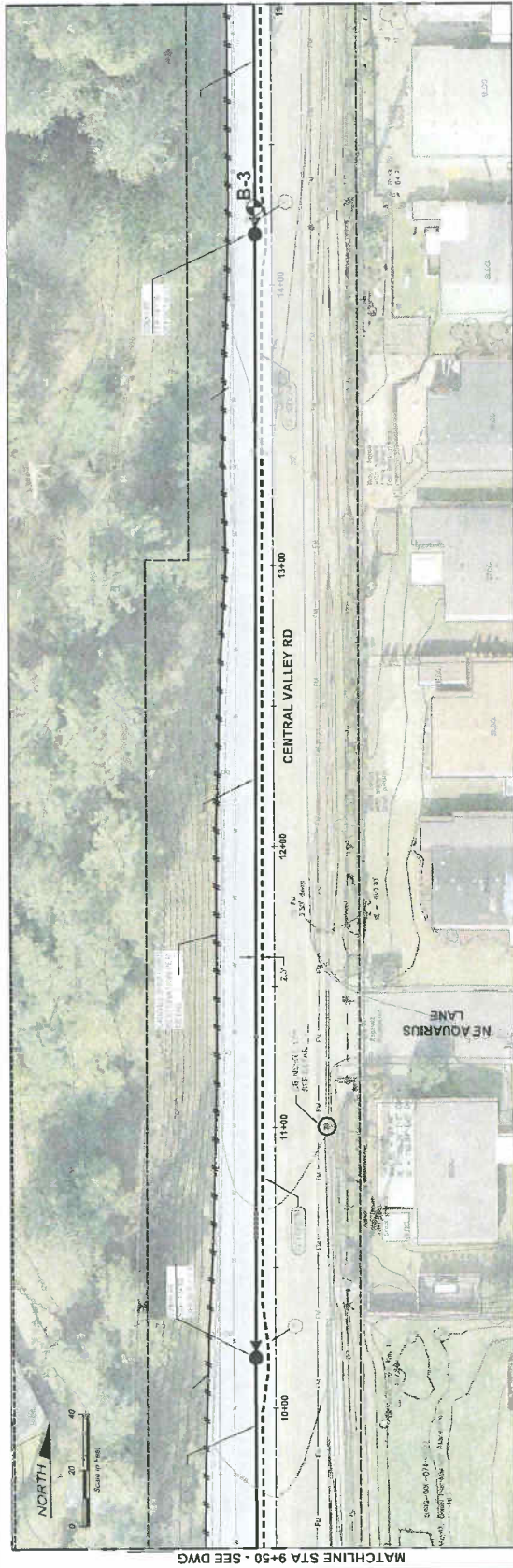
**SCHEDULE 1
ALIGNMENT AND EXPLORATION
PLAN AND PROFILE**

November 2008 21-1-12212-005

SHANNON & WILSON, INC.
Geotechnical and Environmental Consultants

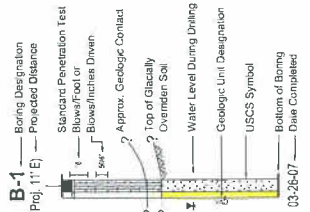
FIG. 2
Sheet 2 of 13

- NOTES:
- 1. UNLESS INDICATED BY A SMALL WHITE ARROW, ALL DIMENSIONS ARE IN FEET.
 - 2. ALL BUILT OVERLAY.

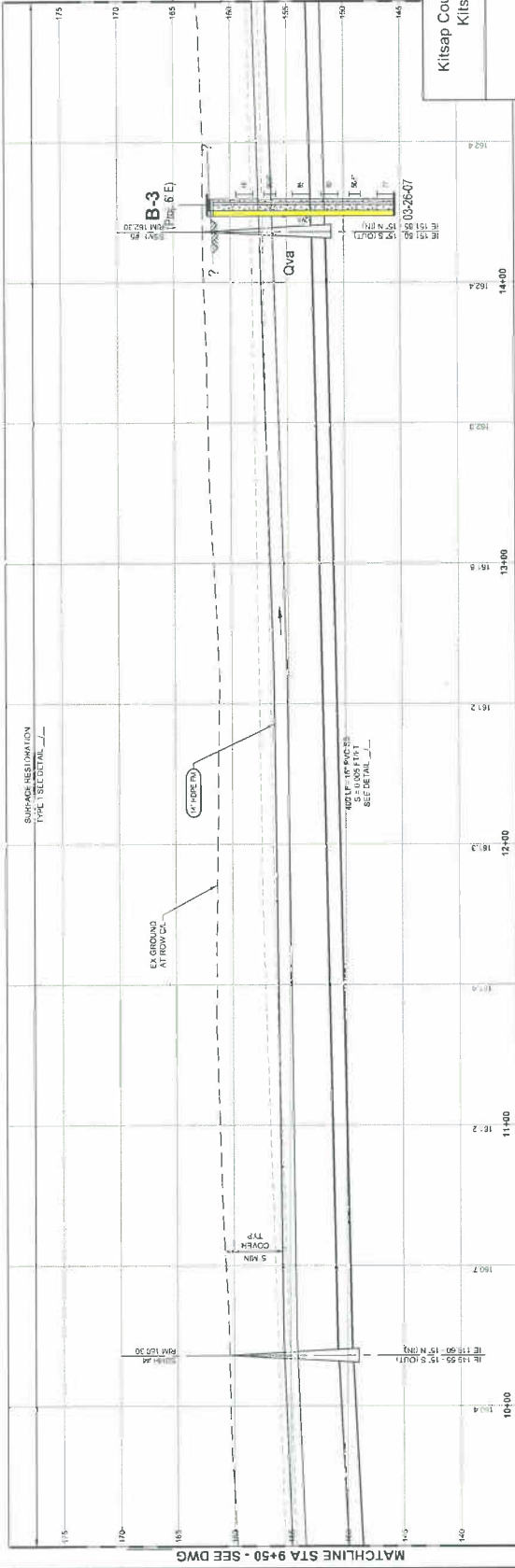


MATCHLINE STA 9+50 - SEE DWG

LEGEND
Boring Designation and Approximate Location



- NOTES
1. Figures extracted from client file: **Fig 2 (2008) SCS - CV/VR.dwg**, prepared by BHC Consultants, LLC, dated September 2008.
 2. See Figure 5 for geologic unit explanation.



MATCHLINE STA 9+50 - SEE DWG

Kitsap County Central Force Main
Kitsap County, Washington

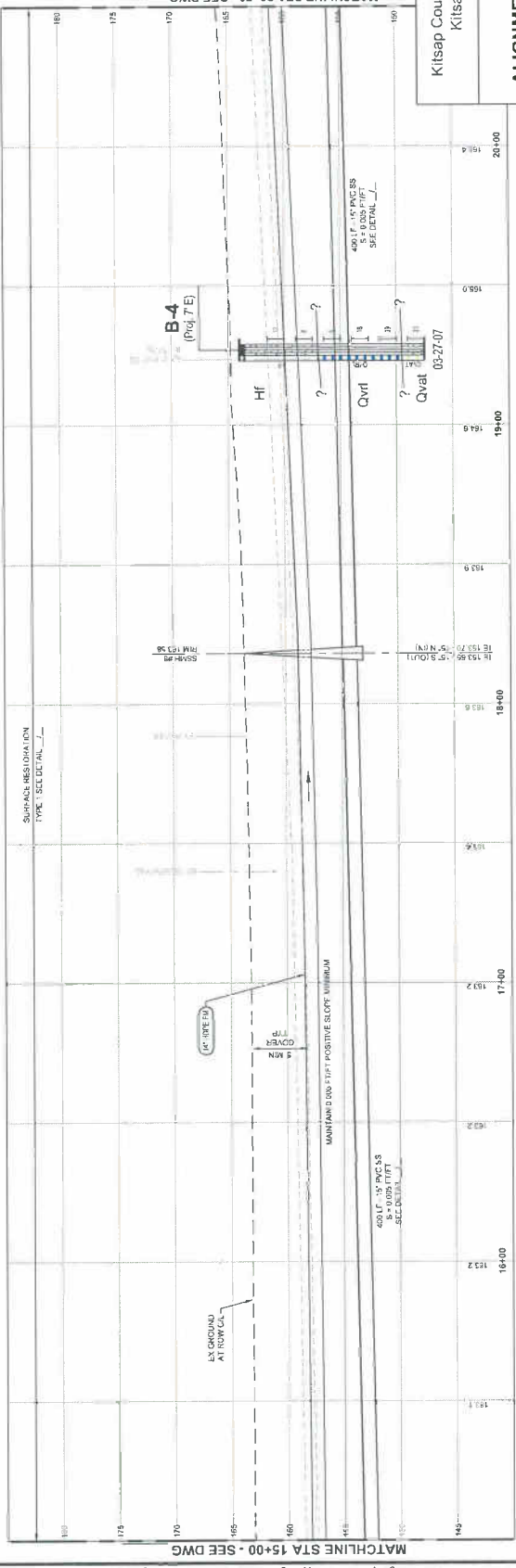
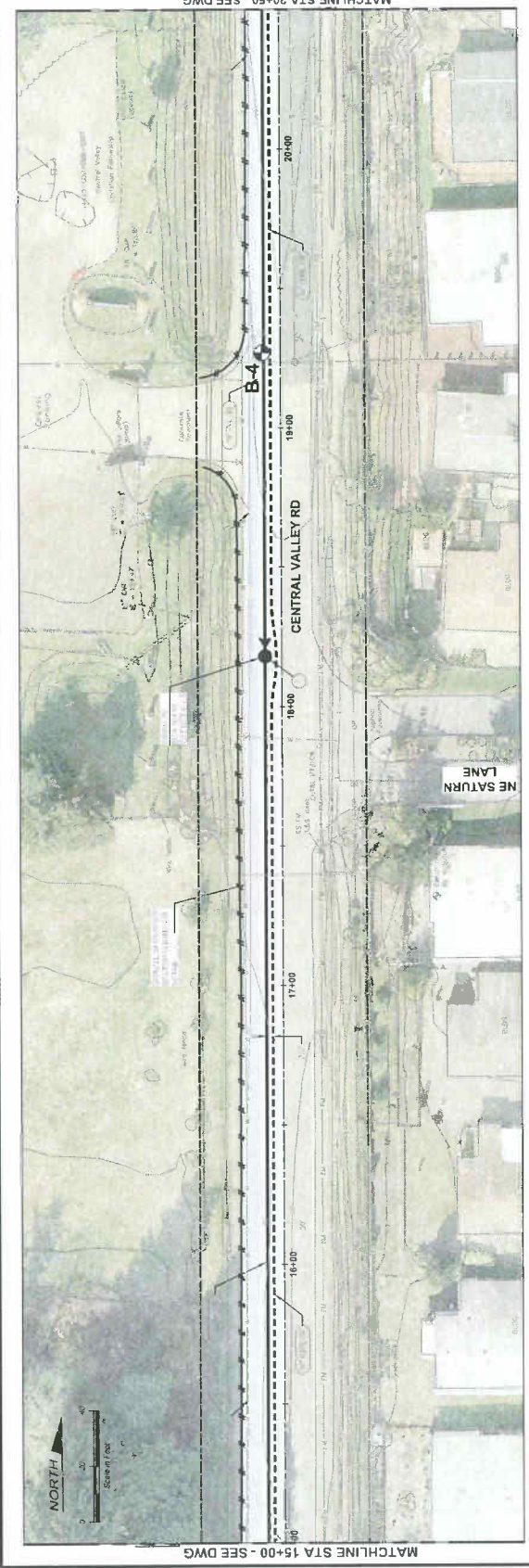
SCHEDULE 1
ALIGNMENT AND EXPLORATION
PLAN AND PROFILE

November 2008
21-1-12212-005

SHANNON & WILSON, INC.
Geotechnical and Environmental Consultants

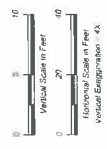
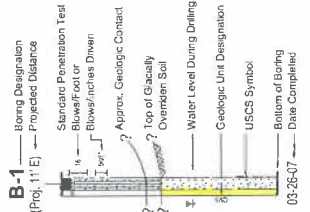
FIG. 2
Sheet 3 of 13

Schedule 1 Central Valley Road Stationing



NOTES:
 (1) DO NOT INDIKATE PACE SHALL UNW/CA
 A MINIMUM FACED OF 30' IS LI
 (2) HALF 30' FEET OVERLAY

B-1 Boring Designation and Approximate Location



NOTES
 1. Figures adapted from client file: P08-10245 SCLT CD/PR/1.dwg, prepared by JHC Consultants, LLC, dated September 2008.
 2. See Figure 5 for geologic unit explanation.

Kitsap County South Central Force Main
 Kitsap County, Washington

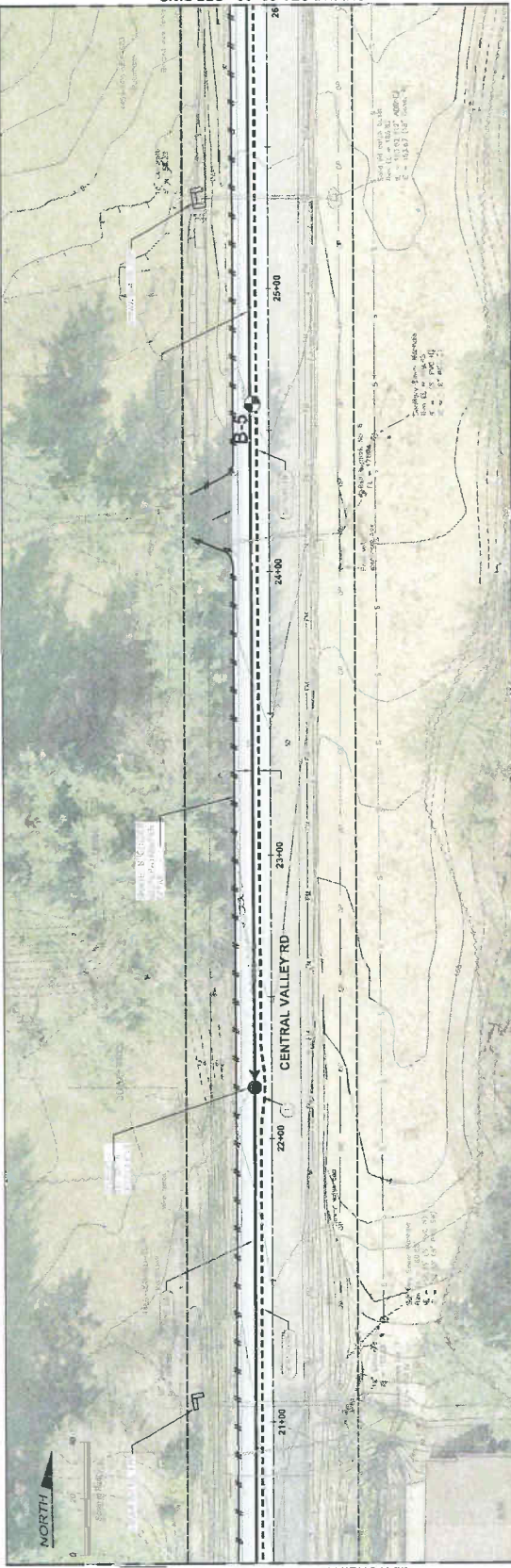
**SCHEDULE 1
 ALIGNMENT AND EXPLORATION
 PLAN AND PROFILE**

November 2008
 21-1-12212-005

SHANNON & WILSON, INC.
 Geotechnical and Environmental Consultants

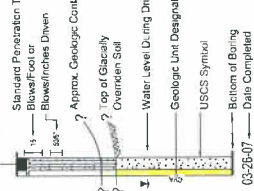
FIG. 2
 Sheet 4 of 13

NOTES:
 1. BEARS IN HOLE PIPE B-HALL-AVLA
 MINIMUM OF 30 FEET.
 2. 1/4" HALL VALVE
 3. 1/4" HALL VALVE

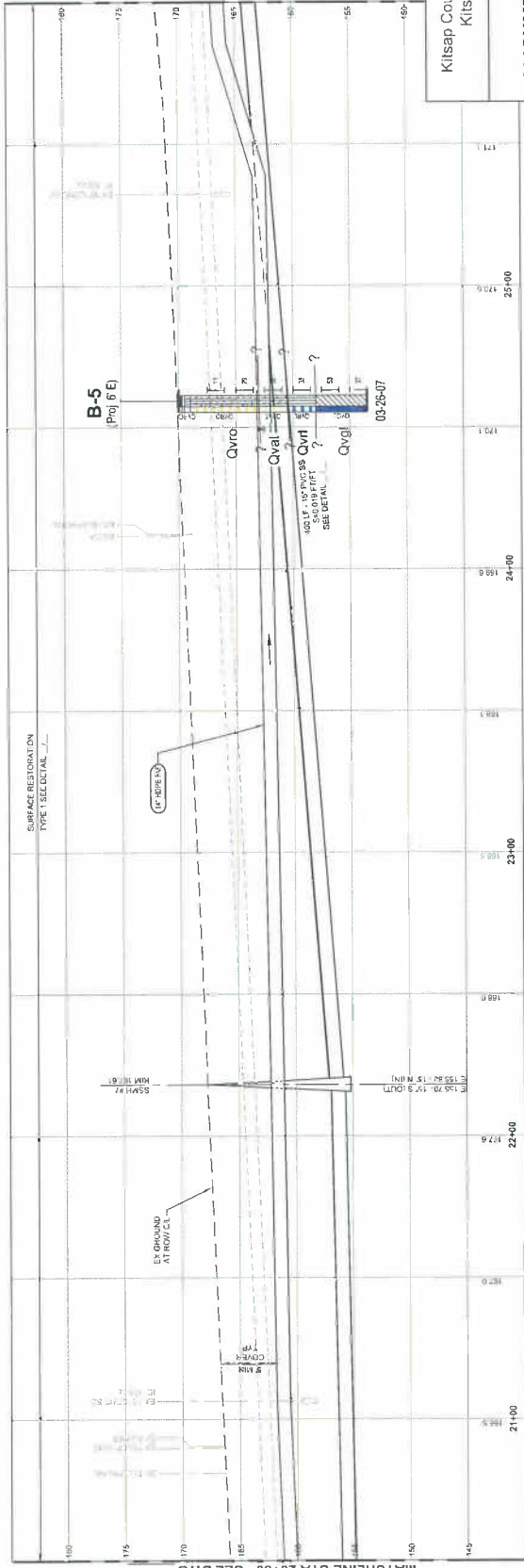


LEGEND
 Boring Designation and
 Approximate Location

B-1 Boring Designation
 (Proj. 1" E) Projected Distance



NOTES
 1. Figure adapted from client file
 prepared by BHC Consultants, L.L.C.
 dated September 2008.
 2. See Figure 5 for geologic unit explanation.



Schedule 1 Central Valley Road Stationing

Kitsap County South Central Force Main
 Kitsap County, Washington

**SCHEDULE 1
 ALIGNMENT AND EXPLORATION
 PLAN AND PROFILE**

November 2008 21-1-12212-005

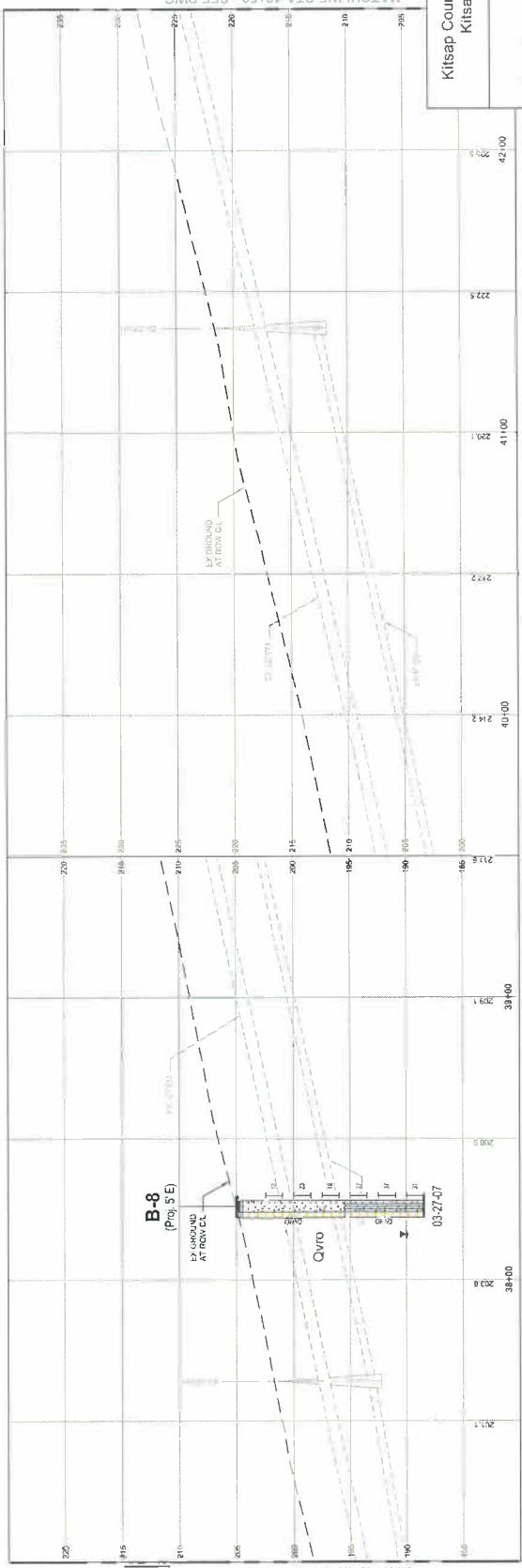
SHANNON & WILSON, INC.
 Geotechnical and Environmental Consultants

FIG. 2
 Sheet 5 of 13

NOTES:
 1. USGS SYMBOLS AND CAPACITY
 LINE ARE AS SHOWN IN FIG. 2.



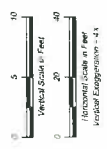
MATCHLINE STA 37+00 - SEE DWG



MATCHLINE STA 42+50 - SEE DWG

B-1
 Boring Designation and
 Approximate Location

- B-1 Boring Designation
- (Fig. 1'E) Projected Distance
- Standard Penetration Test
Blow/Faces Driven
- Approx. Geologic Contact
- Top of Glacially
Overdriven Soil
- Water Level During Drilling
- Geologic Unit Designation
- USGS Symbol
- Bottom of Boring
- Date Completed



NOTES
 1. Figure adapted from client file
 "POB 10/04-05-06, CVP/1 DWG",
 prepared by BHC Consultants, LLC,
 dated September 2006.
 2. See Figure 5 for geologic unit explanation.

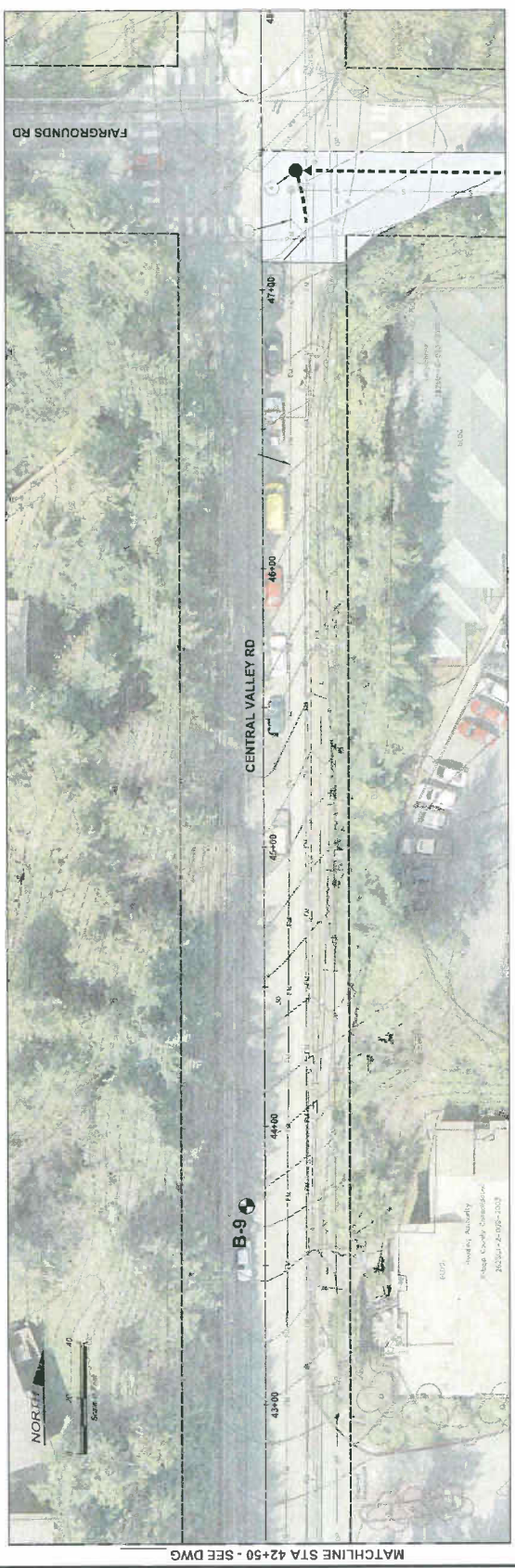
Kitzap County South Central Force Main
 Kitsap County, Washington

SCHEDULE 1
ALIGNMENT AND EXPLORATION
PLAN AND PROFILE

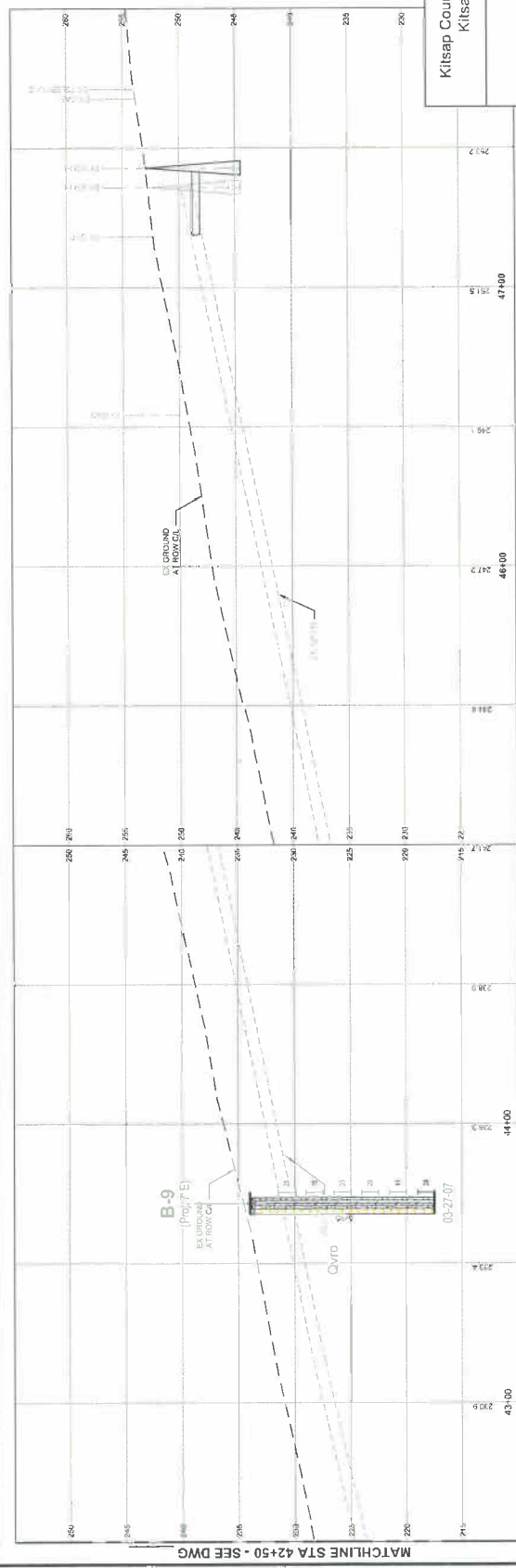
November 2008 21-1-12212-005
SHANNON & WILLSON, INC.
 Geotechnical and Environmental Consultants **FIG. 2**
 Sheet 8 of 13

Schedule 1 Central Valley Road Stationing

- NOTES:**
- ① APPROXIMATE LOCATION OF 8" INCH (M)
 - ② APPROXIMATE LOCATION OF EXISTING PLUMB, CONDUIT, OR ELECTRIC UTIL
 - ③ APPROXIMATE LOCATION OF CURBING
 - ④ 2" X 12" X 8" JACOBS B LEVEL WITH FLANGE CONNECTION
 - ⑤ APPROXIMATE LOCATION OF 3" VALVE



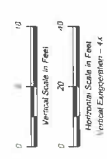
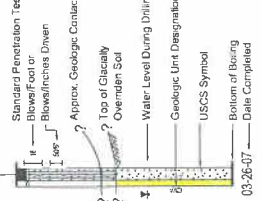
MATCHLINE STA 42+50 - SEE DWG



MATCHLINE STA 42+50 - SEE DWG

LEGEND
 B-1 Boring Designation and Approximate Location

B-1 Boring Designation (Proj. 11' E) — Projected Distance



NOTES

1. Figure adapted from client file prepared by BIC Consultants, LLC, dated September 2008.
2. See Figure 5 for geologic unit explanation.

Kitsap County South Central Force Main
 Kitsap County, Washington

SCHEDULE 1
ALIGNMENT AND EXPLORATION
PLAN AND PROFILE

November 2008 21-1-12212-005

SHANNON & WILSON, INC.
 Geotechnical and Environmental Consultants

FIG. 2
 Sheet 9 of 13

Schedule 1 Central Valley Road Stationing

