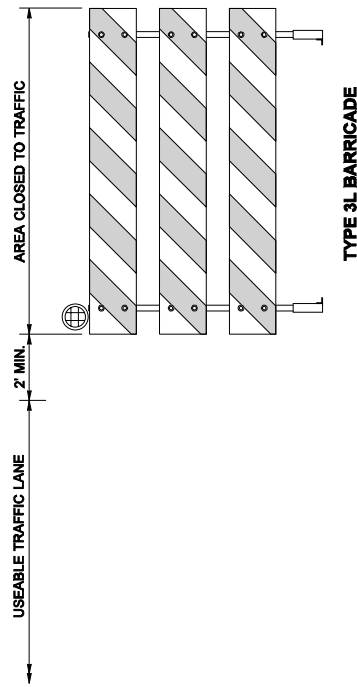
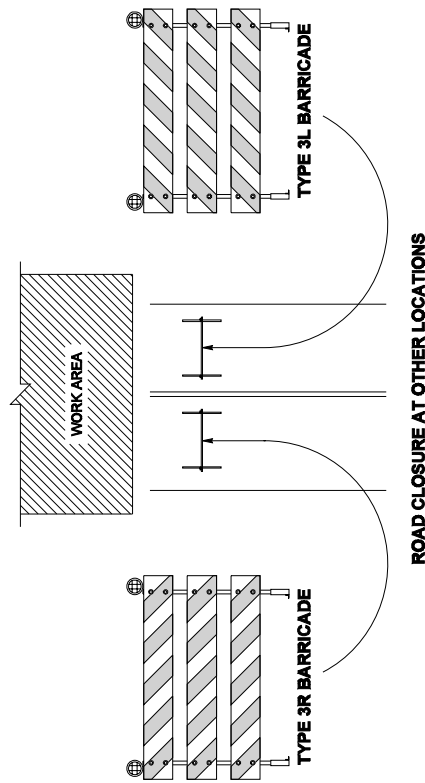
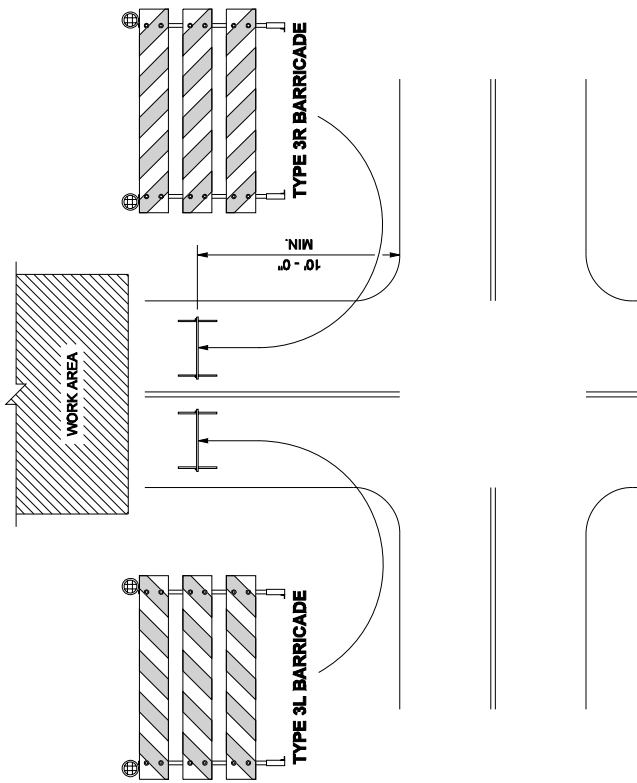
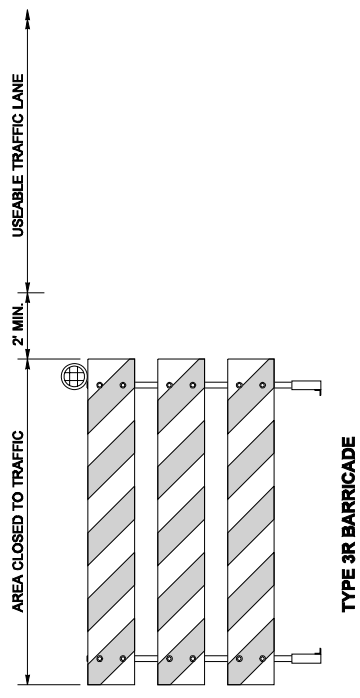


DRAWN BY: LISA CYFORD



STRIPES ON THE BARRICADES SHALL SLOPE DOWNWARD IN THE DIRECTION TRAFFIC IS TO PASS



NOTE: THIS PLAN IS NOT A LEGAL ENGINEERING DOCUMENT. IT IS AN ILLUSTRATION ONLY. THE ORIGINAL SHOULD BE KEPT ON FILE AT THE WASHINGTON STATE DEPARTMENT OF TRANSPORTATION. A COPY MAY BE OBTAINED UPON REQUEST.

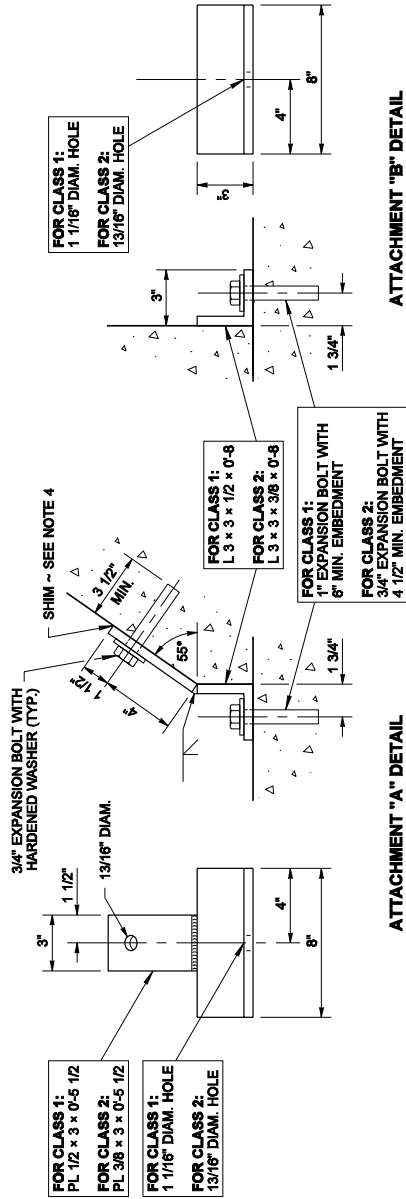
THEODOR J. TREPANIER
STATE OF WASHINGTON
REGISTERED PROFESSIONAL ENGINEER
LICENSE NO. 255335
EXPIRES AUGUST 9, 2007

TYPE 3 BARRICADE
STANDARD PLAN K-80.20-00
 SHEET 2 OF 2 SHEETS
 APPROVED FOR PUBLICATION
Kevin J. Dayton
 STATE DESIGN ENGINEER
 DATE **12-20-06**
 Washington State Department of Transportation

BARRICADE PLACEMENT

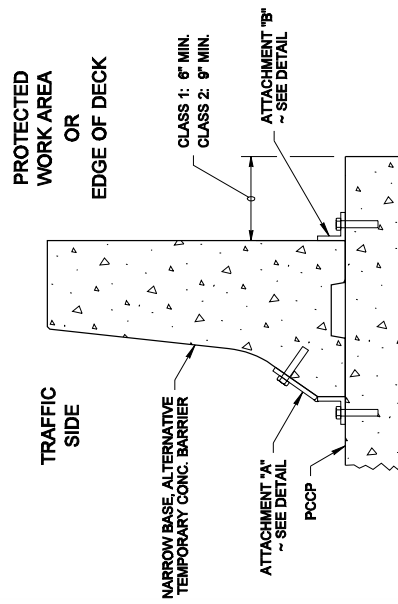
NOTES

1. The intended use of this plan is for the temporary installation of Alternative Temporary Concrete Barrier (F-Shape), Narrow Base (see Standard Plan K-80.30) on cement concrete pavement or bridge deck.
2. Use Class 1 when the concrete pavement or bridge deck is 8" or thicker, use Class 2 when it is 6" or thicker.
3. Adjust the location of the anchors to avoid the main reinforcing in the deck when drilling holes.
4. Use shims to properly fit the anchors to the barrier and roadway surfaces.
5. Upon removal of the anchors, clean the bolt holes and fill them with grout according to Standard Specification 6.02.3(2D).

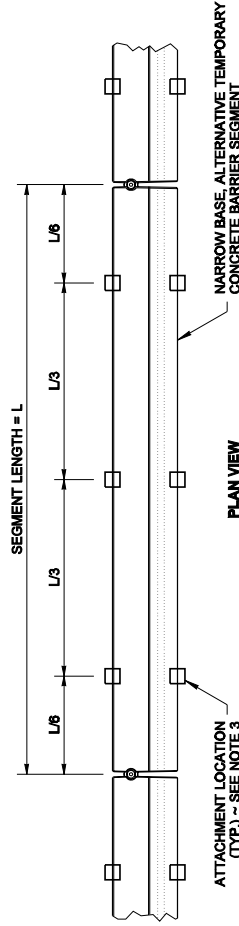


ATTACHMENT "A" DETAIL

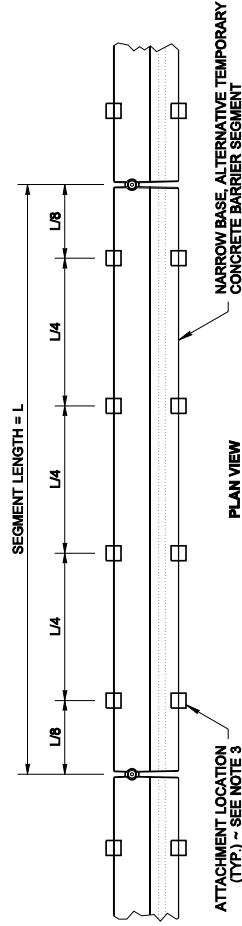
ATTACHMENT "B" DETAIL



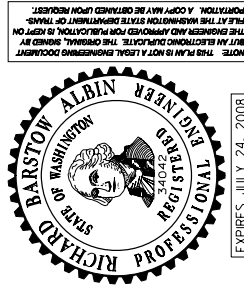
SECTION VIEW
TYPE 2 ANCHOR: CLASS 1 & 2
ATTACHMENT LOCATIONS



TYPE 2 ANCHOR: CLASS 1
ATTACHMENT LOCATIONS



TYPE 2 ANCHOR: CLASS 2
ATTACHMENT LOCATIONS



EXPIRES JULY 24, 2008

TEMPORARY CONC. BARRIER
ANCHORING ~ NARROW
STANDARD PLAN K-80.37-00

SHEET 1 OF 1 SHEET

APPROVED FOR PUBLICATION

Ken L. Smith
STATE DESIGN ENGINEER

02-21-07
DATE

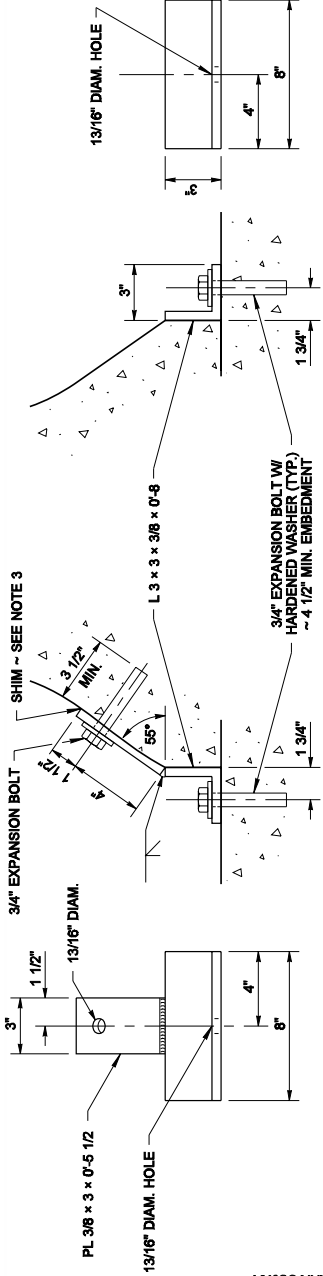
Washington State Department of Transportation



NOTE: THIS PLAN IS NOT A LEGAL ENGINEERING DOCUMENT. THE ENGINEER AND APPROVED FOR PUBLICATION IS RESPONSIBLE FOR VERIFYING THAT THE ORIGINAL, SHOWN IN ALL RESPECTS, IS THE ORIGINAL, SHOWN IN ALL RESPECTS, IS THE ORIGINAL, SHOWN IN ALL RESPECTS. A COPY MAY BE OBTAINED UPON REQUEST.

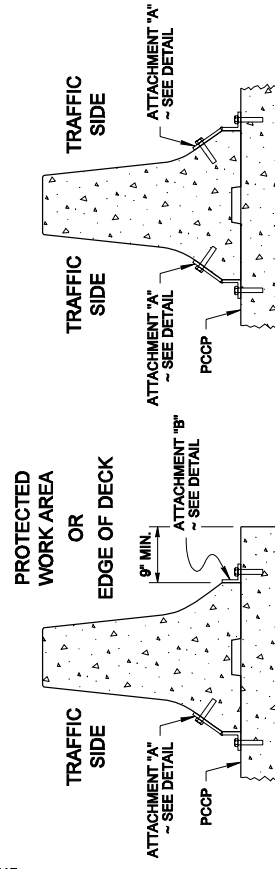
NOTES

1. Use Type 1 Anchors when the concrete pavement or bridge deck is 6" or thicker with 2" wide concrete barrier only. Use Type 2 Anchors (Standard Plan K-80.37) with narrow base barrier.
2. Adjust the location of the Type 1 Anchors to avoid the main reinforcing in the deck when drilling holes.
3. Use shims to properly fit the Type 1 Anchors to the barrier and roadway surfaces.
4. Upon removal of the Type 1 Anchors, clean the bolt holes and fill them with grout according to Standard Specification 6.02.3(2D).
5. Remove the Type 3 Anchors by first driving the steel pins down through the barrier further into the pavement to allow lifting the barrier without interference, then remove the pins from the pavement.
6. After removing the Type 3 Anchors, clean the pin holes and fill them with sealant according to Standard Specification 9-04.2.



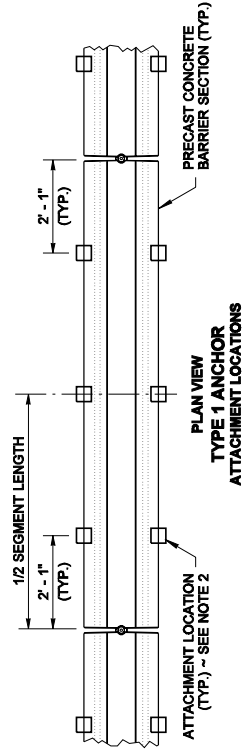
ATTACHMENT "B" DETAIL

ATTACHMENT "A" DETAIL



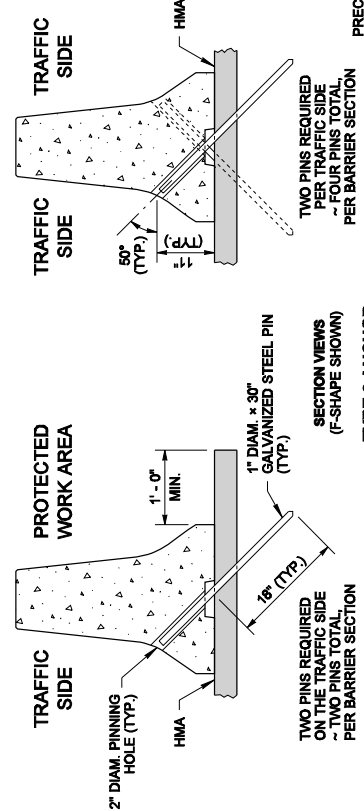
SECTION VIEWS (F-SHAPE SHOWN)

TYPE 1 ANCHOR ATTACHMENT LOCATIONS



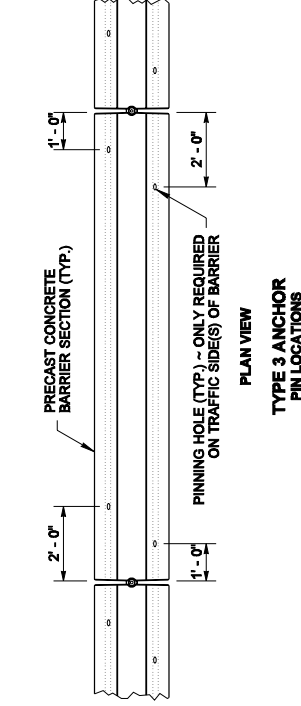
TYPE 1 ANCHOR

TEMPORARY INSTALLATION OF PRECAST CONC. BARRIER TYPE 2 (STD. PLAN C-8) AND TEMPORARY CONC. BARRIER (F-SHAPE) (STD. PLAN K-80.30) ON CEMENT CONC. PAVEMENT OR BRIDGE DECK



SECTION VIEWS (F-SHAPE SHOWN)

TYPE 3 ANCHOR PIN LOCATIONS



TYPE 3 ANCHOR

TEMPORARY INSTALLATION OF PRECAST CONC. BARRIER TYPE 2 (STD. PLAN C-8) AND TEMPORARY CONC. BARRIER (F-SHAPE) (STD. PLAN K-80.30) ON HOT MIX ASPHALT PAVEMENT



EXPIRES JULY 24, 2008

TEMPORARY CONC. BARRIER ANCHORING

STANDARD PLAN K-80.35-00

SHEET 1 OF 1 SHEET

APPROVED FOR PUBLICATION

Ken L. Smith
 STATE DESIGN ENGINEER
 DATE 02-21-07

Washington State Department of Transportation



