

Converse Regional Storm Pond and Conveyance System

Overview

Kitsap County Surface and Stormwater Management Program (SSWM) will build a regional stormwater detention pond and approximately 3,000 feet of stormwater pipe in the Converse Basin in the Port Orchard vicinity of south Kitsap County. A regional detention pond will reduce flooding in the Converse Avenue and Ponderosa Park areas, improve drainage system effectiveness, and meet the area's future drainage needs.

This basin has a history of wintertime flooding, standing water, and poor stormwater drainage. In winter 1997, a large rainstorm caused flooding that closed streets and damaged homes. The regional pond and new pipeline will reduce both the frequent, minor flooding and the less frequent but more damaging storm flooding.

Project location

The pipe will be located along Converse Ave SE:

- Converse Circle south across Sedgwick Road (SR 160) to Converse Cove
- West through wooded area, across Kerry Lane to Estonia Court
- Through the Estonia Court Pond to the new regional pond.

The location for the new regional stormwater pond is on four acres west of Estonia Court SE. In addition, there will be a stormwater access road built west of Estonia Court SE, off of SE Sedgwick Road.

Construction Summary

Work Description

Pipeline: Workers will dig trenches, lay down stormwater pipe, and restore the pavement over the pipe. Catch basins and manholes also will be installed. Saws will be used to cut asphalt or concrete pavement. Roads are expected to stay open, and flaggers will help keep traffic moving.

The pipe under Sedgwick Road already has been installed as part of the Washington Department of Transportation's SR 160 – SR 16 to Long Lake Road street widening project.

Regional pond: Workers will clear, dig, and build a new embankment for the pond. An access road also will be built. New piping will direct stormwater into the pond, and spillways will allow water to flow out. The pond will be landscaped with native plants and trees. These plantings along with increased settling time of polluted runoff in the pond will improve the quality of the water leaving the pond.

Construction Schedule

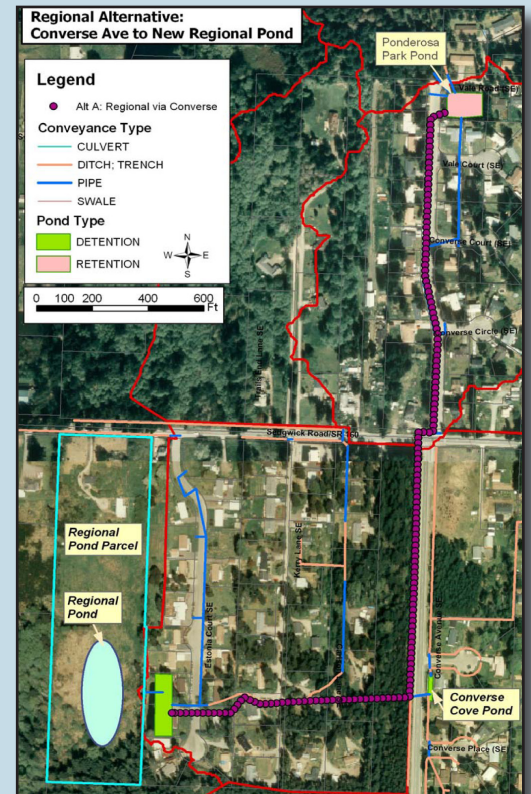
Construction began in May 2010 and is scheduled to be completed in September 2010. Freeman Bell LLC is the construction contractor. The work typically will occur from 7:00 a.m. to 6:00 p.m, Monday through Friday.

Cost

The project cost is \$1.45 million. The project is funded by Kitsap County Surface and Stormwater Management fees.

Commissioner District

Commissioner District: District 2



Where will stormwater flow during future rain storms?

The Converse Regional detention pond and pipeline will drain stormwater from areas both north and south of Sedgwick Road. Stormwater from the Ponderosa Park pond will backflow into the new stormwater pipeline. The pipeline will collect polluted runoff from neighborhood streets and direct it into the regional pond. Stormwater from the Estonia Court pond will also drain into the new regional pond.



Example of a regional pond: Alaska Avenue Regional Detention Pond

