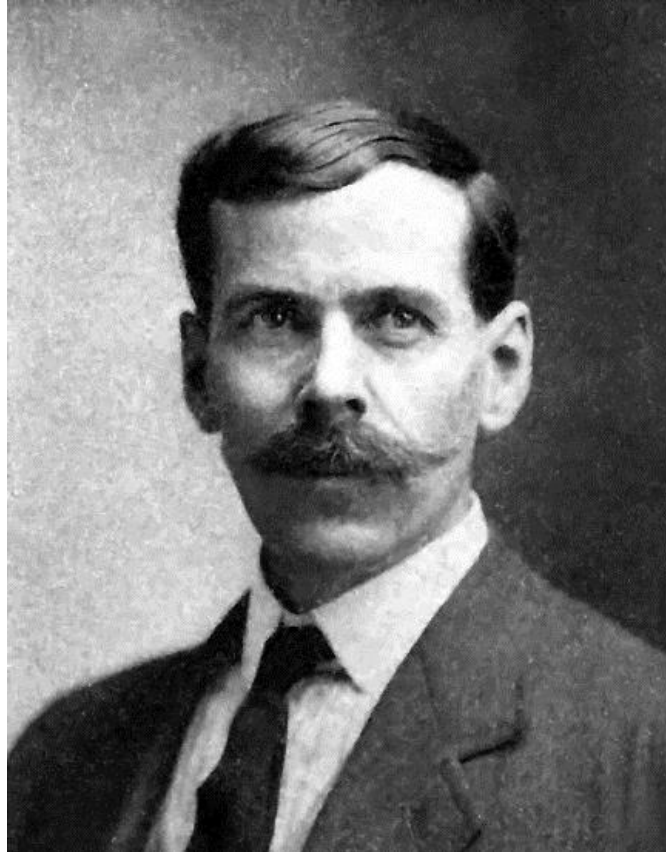


# Charles Berry



## FORMER COUNTY CLERK DIES IN OLYMPIA

News has been received of the sudden death of Charles Berry, formerly county clerk of Kitsap county and well known to many people of Bremerton. The funeral occurred yesterday afternoon at Olympia, a number of local people being in attendance. Mr. Berry had lived in Charleston and Port Orchard for a number of years and was at one time employed in the yard. He is survived by a wife and one daughter.