

**SPECIFICATIONS AND DRAWINGS**

**CONTRACT DRAWINGS  
VOLUME 2 OF 2**

**KITSAP COUNTY  
VACTOR DECANT FACILITY**

*Prepared for*

Kitsap County Public Works Department  
614 Division Street  
Port Orchard, Washington 98366

September 12, 1997



1501 Fourth Avenue  
#1500  
Seattle, WA 98101

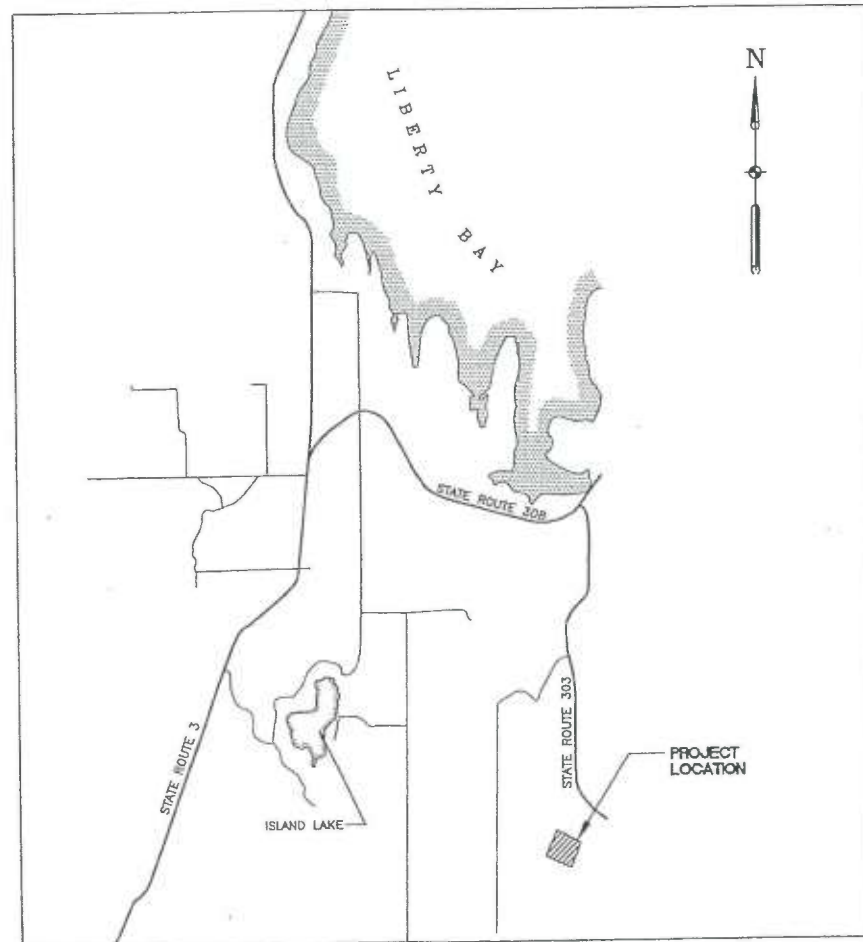
Handwritten notes in the upper right corner of the page, including:  
1 NORTH 222 932.508  
2 EAST 1145347.9308  
3 N 222 556.6206  
4 E 1146669.1959  
5 N 226 704.4231  
6 E 1161515.9635  
7 N 226 693.2899  
8 E 1162370.2249

# KITSAP COUNTY DEPARTMENT OF PUBLIC WORKS

## KITSAP COUNTY, WASHINGTON

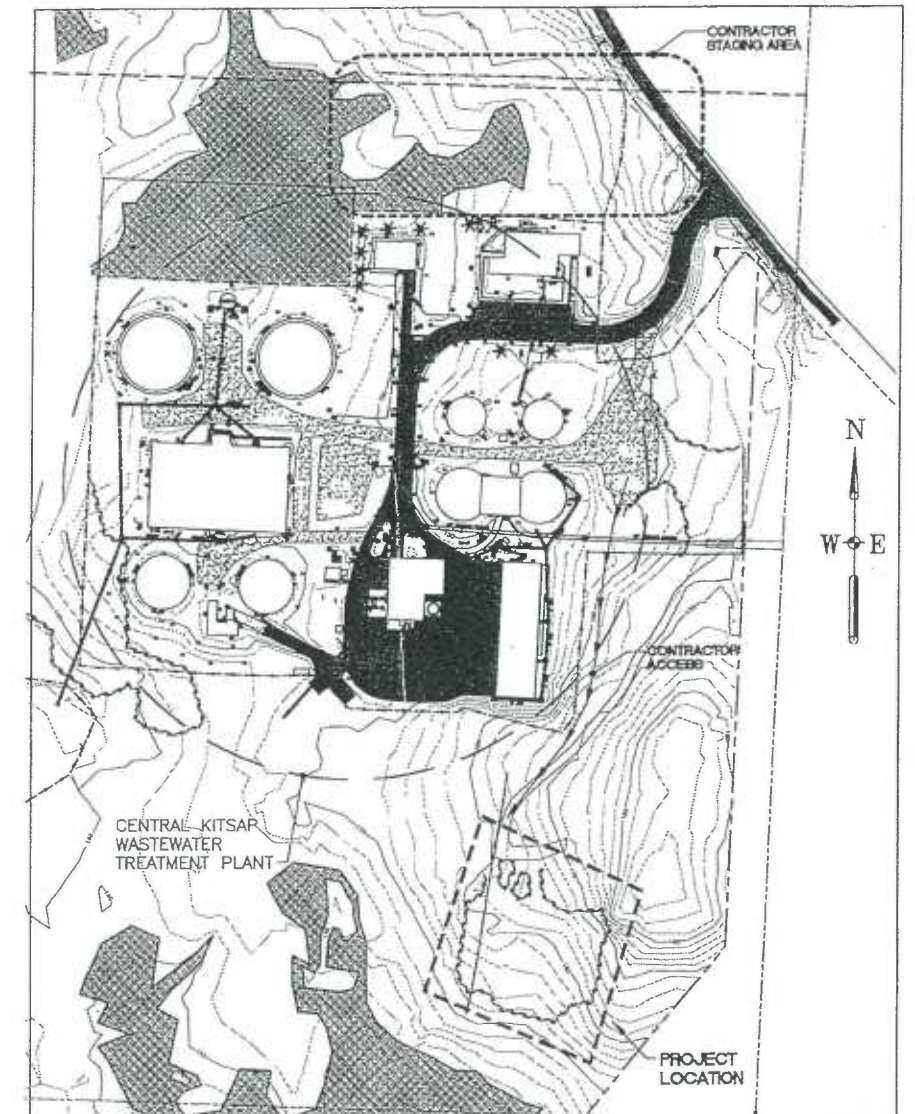
### KITSAP COUNTY VACTOR DECANT FACILITY

#### VOLUME 2 - DRAWINGS



VICINITY MAP

LIST OF DRAWINGS	
SHEET NO.	DESCRIPTION
G-1	COVER SHEET
G-2	GENERAL NOTES, SURVEY CONTROL POINT TABLE, LEGEND AND ABBREVIATIONS
C-1	SITE PLAN
C-2	GRADING SECTIONS
C-3	SITE SECTIONS AND DETAILS
A-1	FACILITY PLAN
A-2	FACILITY SECTIONS
A-3	FACILITY SECTIONS AND DETAILS
A-4	OFFICE PLAN, ELEVATIONS AND DETAILS
A-5	OFFICE NOTES AND SPECIFICATIONS
S-1	FOUNDATION PLAN, TYPICAL CROSS SECTION AND GENERAL NOTES
S-2	STRUCTURAL DETAILS - SHEET 1
S-3	STRUCTURAL DETAILS - SHEET 2
S-4	STRUCTURAL DETAILS - SHEET 3
M-1	UNDERGROUND UTILITY PLAN
M-2	MECHANICAL SECTIONS AND ISO
E-1	ELECTRICAL ONE LINE DIAGRAM AND DETAILS
E-2	LIGHTING AND POWER PLAN

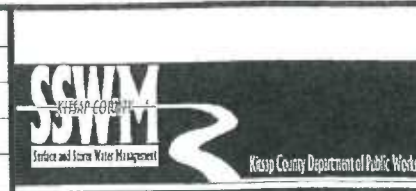


SITE LOCATION MAP



COPIES 8-21-99

REV	DESCRIPTION OF REVISION	BY	DATE
△			
△			
△			
△			



**Woodward-Clyde**

**Consultants**

Engineering & sciences applied to the earth & its environment

DESIGNED	KA
DRAWN	REG
CHECKED	AdS
PEER REVIEWER	MK
PROJ. MANAGER	SA
DATE	9-17-97

Kitsap County Vactor Decant Facility      Kitsap County, WA

COVER SHEET

PROJECT NUMBER	954045NC
DRAWING NUMBER	G-1

CAD FILE: G-1



**GENERAL NOTES**

1. MAINTAIN AND PROTECT ALL TREES AND VEGETATION OUTSIDE CLEARING LIMIT OR FILTER FABRIC FENCE.
2. INSTALL EROSION CONTROL SEEDING ON SLOPES STEEPER THAN 3 HORIZONTAL TO 1 VERTICAL. (SEE SPECIFICATIONS.)
3. TEMPORARY EROSION AND SEDIMENTATION CONTROL MEASURES SHALL BE IN ACCORDANCE WITH THE KITSAP COUNTY STORMWATER MANAGEMENT ORDINANCE AND DESIGN MANUAL (APRIL 1, 1997). FOR FILTER FABRIC FENCE DETAILS, SEE FIG 3-9. FOR SEDIMENT TRAP DETAILS, SEE FIG 3-5 AND 3-6. FOR ROCK CHECK DAMS SEE FIG 3-21.
4. FOR DETAILS OF RIPRAP OUTFALL PROTECTION, SEE KITSAP COUNTY STORMWATER MANAGEMENT ORDINANCE AND DESIGN MANUAL (APPENDIX 3A AND TABLE 7-4).
5. EXISTING GROUNDWATER LEVELS AND TEST PIT (TP) LOCATIONS ARE PER "GEOLOGICAL REPORT, PROPOSED VACTOR FACILITY, CENTRAL KITSAP WWTF, KITSAP COUNTY, WASHINGTON (MAY 2, 1997)," PREPARED BY HONG-WEST & ASSOCIATES, INC.

**LEGEND**

- EXISTING BARBED WIRE FENCE
- \*-\*- FILTER FABRIC FENCE
- PROPOSED CHAIN LINK FENCE
- F-C- CUT AND FILL LINE
- TP-2 TEST PIT
- 180 EXISTING CONTOUR
- 156 PROPOSED CONTOUR
- DITCH FLOW LINE
- WETLAND BUFFER
- PROPERTY LINE
- WETLAND PERIMETER
- BUFFER
- FUTURE WASTEWATER TREATMENT FACILITY
- SETBACK LINE
- LIMIT OF WORK
- 106 COUNTY CONTROL POINT
- 1 COORDINATE REFERENCE
- 2"W WATERLINE
- 8"SD STORM DRAIN LINE
- 4"FM SANITARY FORCE MAIN
- 4"SS SANITARY SEWER MAIN
- 1 GRID

**ABBREVIATIONS**

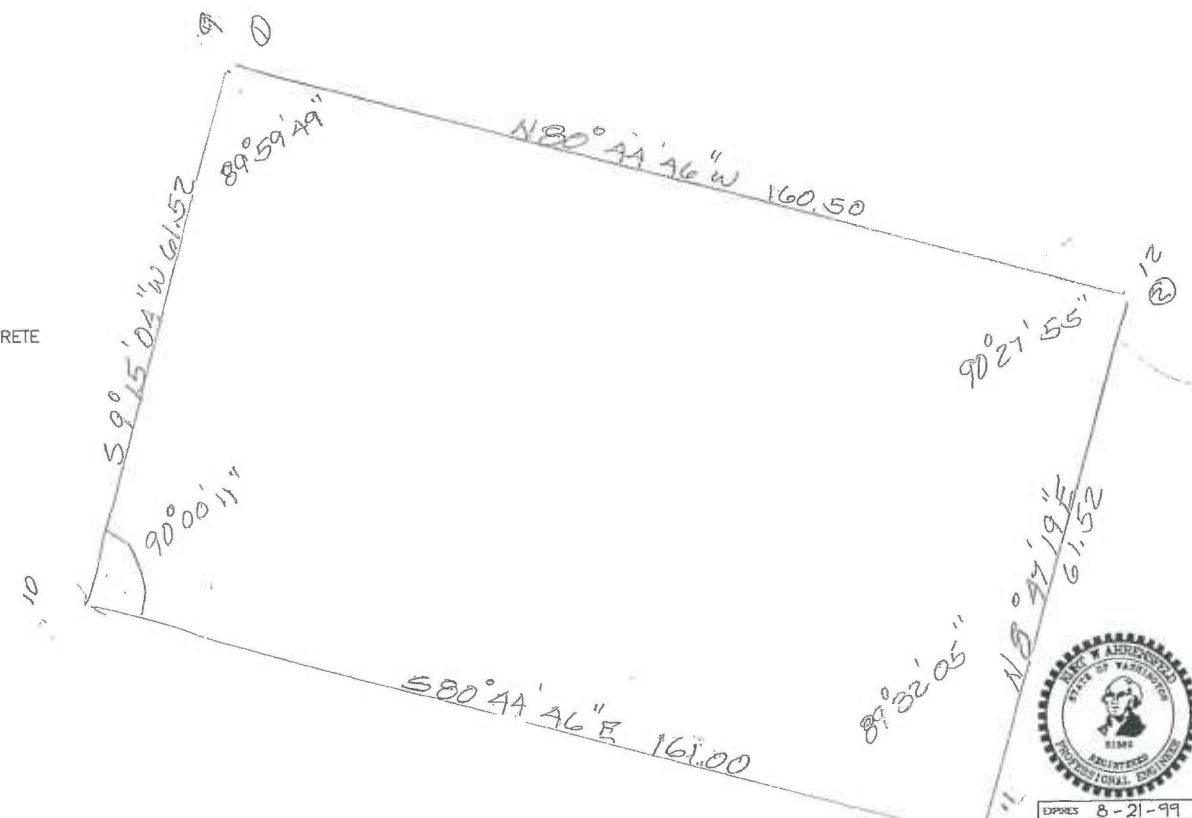
AC	ACRES	GB	GRADE BREAK
ACT	ACTUAL	GR	GROUND
ADJ	ADJUST	HDPE	HIGH DENSITY POLYETHYLENE
AGGR	AGGREGATE	HORIZ	HORIZONTAL
ALT	ALTERNATE	HD	HORIZONTAL DISTANCE
APPROX	APPROXIMATE	HP	HIGH POINT
ASPH	ASPHALT	HWS	HOT WATER SUPPLY
AVE	AVENUE	ID	INSIDE DIAMETER
AVG	AVERAGE	IE, INV EL	INVERT ELEVATION
AZ	AZIMUTH	IN	INCH
@	AT	LF	LINEAR FEET
BLDG	BUILDING	LONGIT	LONGITUDINAL
BM	BENCH MARK	LS	LUMP SUM
BOT	BOTTOM	LT	LEFT
CAP	CAPACITY	MAX	MAXIMUM
CB	CATCH BASIN	MFR	MANUFACTURE(R)
CHD	CHORD	MH	MANHOLE
CI	CONTOUR INTERVAL	MI	MILE
CIR	CIRCLE	MIN	MINIMUM
CIRC	CIRCUMFERENCE	MISC	MISCELLANEOUS
CJ	CONTROL JOINT	N	NORTH
CL, @	CENTER LINE	NIC	NOT IN CONTRACT
CLR	CLEAR	NO	NUMBER
CMP	CORRUGATED METAL PIPE	NTS	NOT TO SCALE
C/O	CLEAN OUT	OC	ON CENTER
COL	COLUMN	OD	OUTSIDE DIAMETER
COMPL	COMPLETE	OPNG	OPENING
CONC	CONCRETE	OZ	OUNCE
CONN	CONNECTION	P	POWER CONDUIT
CONST	CONSTRUCT	PCC	PORTLAND CEMENT CONCRETE
CONT	CONTINUOUS	PERF	PERFORATED
COR	CORNER	PL	PLATE
CP	CONTROL POINT	PNL	PANEL
CTR	CENTER	PT	POINT
CU FT, CF	CUBIC FOOT	PVC	POLYVINYL CHORIDE
CU IN	CUBIC INCH	PVM'T	PAVEMENT
CU YD, CY	CUBIC YARD	R	RADIUS
CV	CHECK VALVE	RCP	REINFORCED CONCRETE PIPE
CWS	COLD WATER SUPPLY	REINF	REINFORCE
DET	DETAIL	REM	REMOVE
DI	DUCTILE IRON	REPL	REPLACE
DIA, @	DIAMETER	REQ'D	REQUIRED
DISCH	DISCHARGE	RT	RIGHT
DIST	DISTANCE	S	SLOPE
DWG	DRAWING	SD	STORM DRAIN
Δ	DELTA (CENTRAL ANGLE)	SDR	STANDARD DIMENSION RATIO
E	EAST	SF	SQUARE FEET/SQUARE FOOT
EA	EACH	SS	STAINLESS STEEL
EF	EACH FACE	STA	STATION
ELEC	ELECTRICAL	STD	STANDARD
ELEV, EL	ELEVATION	STIRR	STIRRUP(S)
EP	EDGE OF PAVEMENT	T	TELEPHONE CONDUIT
EVC	END OF VERTICAL CURVE	TOC	TOP OF COVER, TOP OF CONCRETE
EW	EACH WAY	TOP	TOP OF PIPE
EX, EXIST	EXISTING	TP	TOP OF PAVEMENT
EXH	EXHAUST	TPR	TAPER
FD	FLOOR DRAIN	TS	TOE OF SLOPE
FG	FINISH GRADE	TYP	TYPICAL
FIN	FINISH	TW	TOP OF WALL
FL	FLOW LINE	UD	UNDERDRAIN (PERFORATED)
FLG	FLANGE	UNO	UNLESS NOTED OTHERWISE
FM	FORCE MAIN	V	VALVE
FND	FOUNDATION	VERT	VERTICAL
FOIE	FLOW OUTLET INVERT ELEVATION	W	POTABLE WATER
FT	FOOT/FEET	WC	WATER CLOSET
		W/	WITH
		WH	WATER HEATER
		XFMR	TRANSFORMER

**SURVEY CONTROL POINT TABLE**

CTRL PT NO.	PROJECT COORDINATE		DESCRIPTION	CTRL PT NO.	PROJECT COORDINATE		DESCRIPTION
	NORTH	EAST			NORTH	EAST	
1	250,688.65	1,197,814.99	FILTER FABRIC FENCE	11	250,515.23	1,197,964.57	CONC SLAB/BLDG CORNER
2	250,476.68	1,197,756.74	FILTER FABRIC FENCE	12	250,576.03	1,197,973.97	CONC SLAB/BLDG CORNER
3	250,438.15	1,197,822.06	FILTER FABRIC FENCE				
4	250,502.32	1,197,852.67	FILTER FABRIC FENCE				
5	250,481.29	1,197,983.18	FILTER FABRIC FENCE				
6	250,557.81	1,198,024.69	FILTER FABRIC FENCE				
7	250,665.08	1,197,826.22	ASPHALT APRON				
8	250,639.46	1,197,983.80	ASPHALT APRON				
9	250,601.84	1,197,815.56	CONC SLAB/BLDG CORNER				
10	250,541.12	1,197,805.67	CONC SLAB/BLDG CORNER				

HORIZONTAL CONTROL:  
WASHINGTON STATE COORDINATE SYSTEM  
CONTROL POINT 106  
HUB AND TACK 15.6" S 19" FIR STUMP  
1.5' HIGH W 60d NAIL  
E 142.665  
N 250,397.56  
E 1,197,812.48

COUNTY TO PROVIDE BASELINE AT BLDG COLUMN LINES "4" AND "A"



REV	DESCRIPTION OF REVISION	BY	DATE



DESIGNED	KA
DRAWN	RK
CHECKED	ADS
PEER REVIEWER	MK
PROJ MANAGER	SA
DATE	9-17-97

**Kitsap County Vactor Decant Facility**      **Kitsap County, WA**

**GENERAL NOTES, SURVEY CONTROL POINT TABLE, LEGEND AND ABBREVIATIONS**

PROJECT NUMBER  
**954045NC**

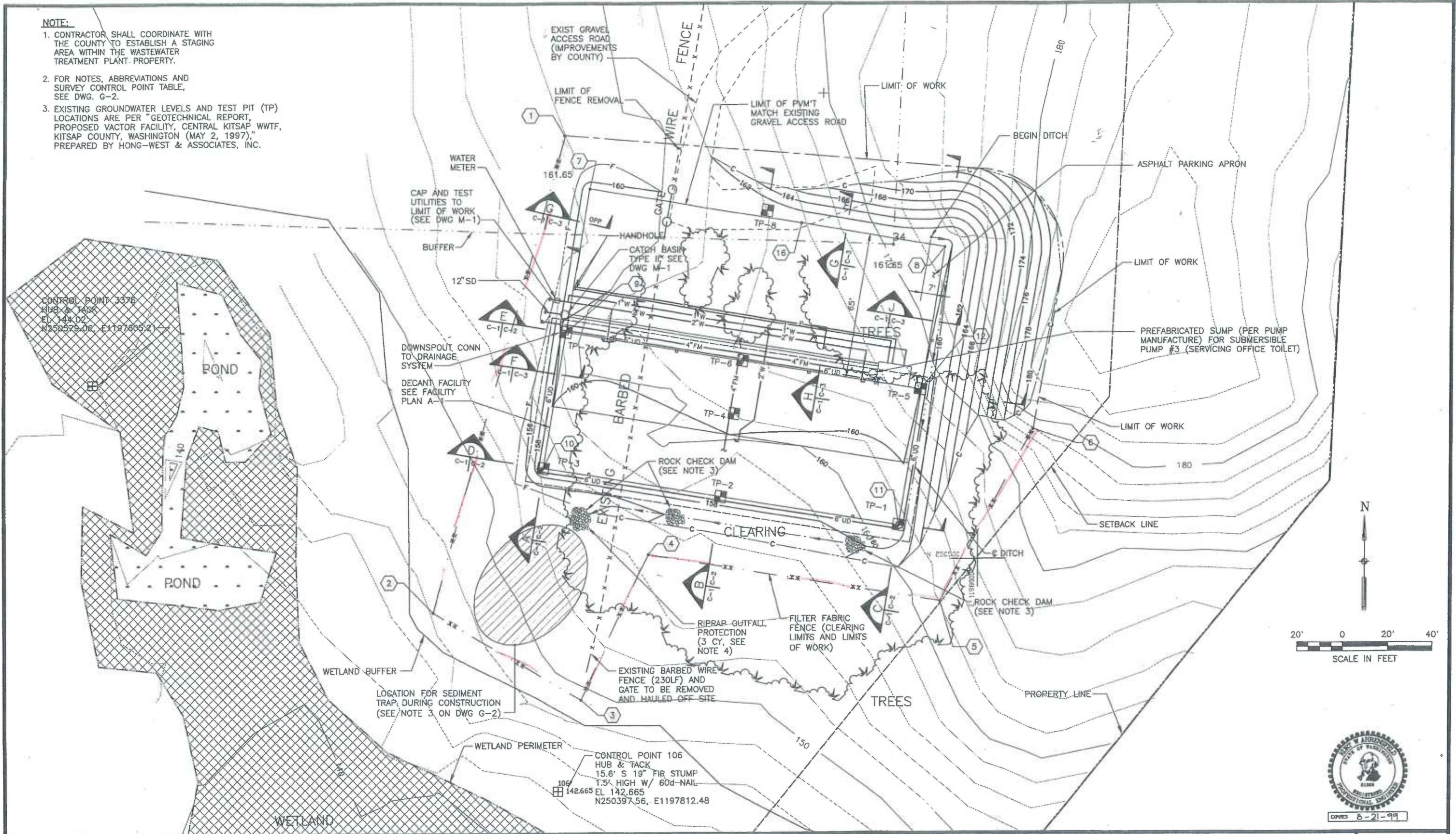
DRAWING NUMBER  
**G-2**



**NOTE:**

1. CONTRACTOR SHALL COORDINATE WITH THE COUNTY TO ESTABLISH A STAGING AREA WITHIN THE WASTEWATER TREATMENT PLANT PROPERTY.
2. FOR NOTES, ABBREVIATIONS AND SURVEY CONTROL POINT TABLE, SEE DWG. G-2.
3. EXISTING GROUNDWATER LEVELS AND TEST PIT (TP) LOCATIONS ARE PER "GEO TECHNICAL REPORT, PROPOSED VACTOR FACILITY, CENTRAL KITSAP WWTF, KITSAP COUNTY, WASHINGTON (MAY 2, 1997)," PREPARED BY HONG-WEST & ASSOCIATES, INC.

CONTROL POINT 3376  
HUB & TACK  
ED 144.02  
N250979.06, E1197805.2



REV	DESCRIPTION OF REVISION	BY	DATE



**Woodward-Clyde Consultants**  
Engineering & sciences applied to the earth & its environment

DESIGNED	KA
DRAWN	REG
CHECKED	AdS
PEER REVIEWER	MK
PROJ. MANAGER	SA
DATE	9-17-97

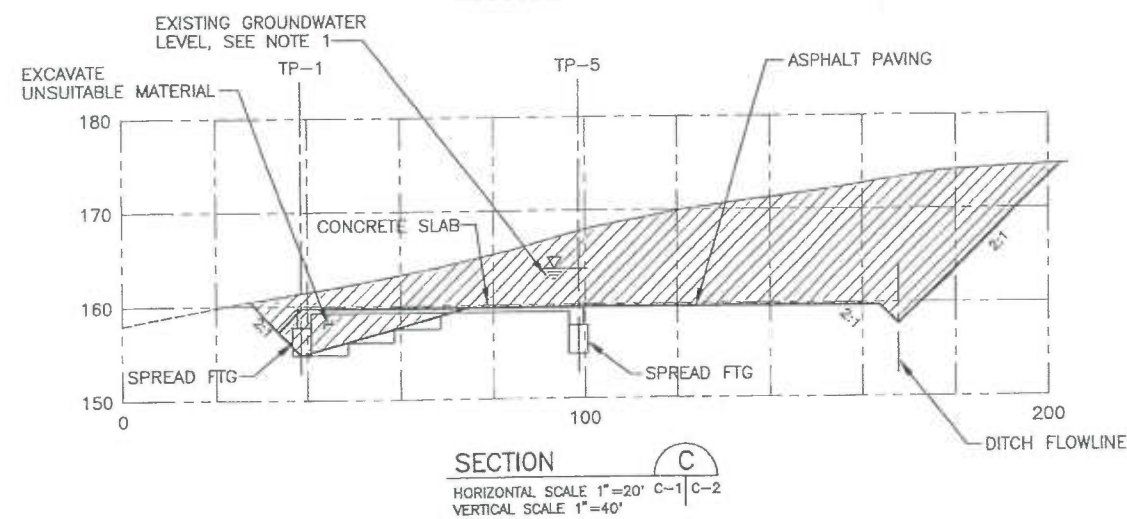
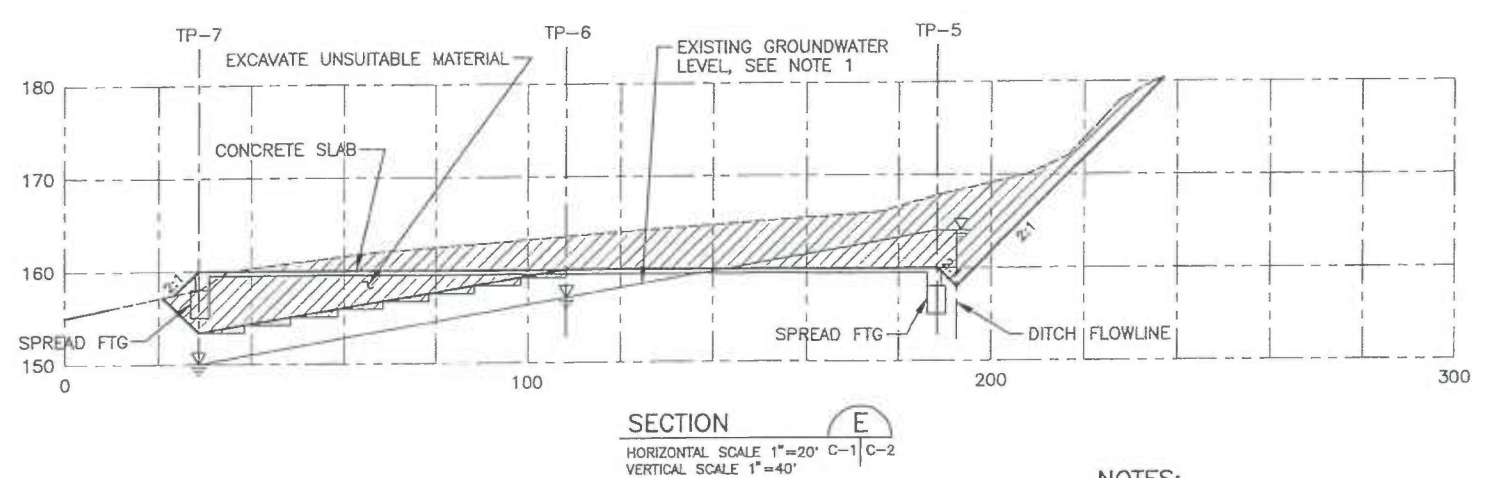
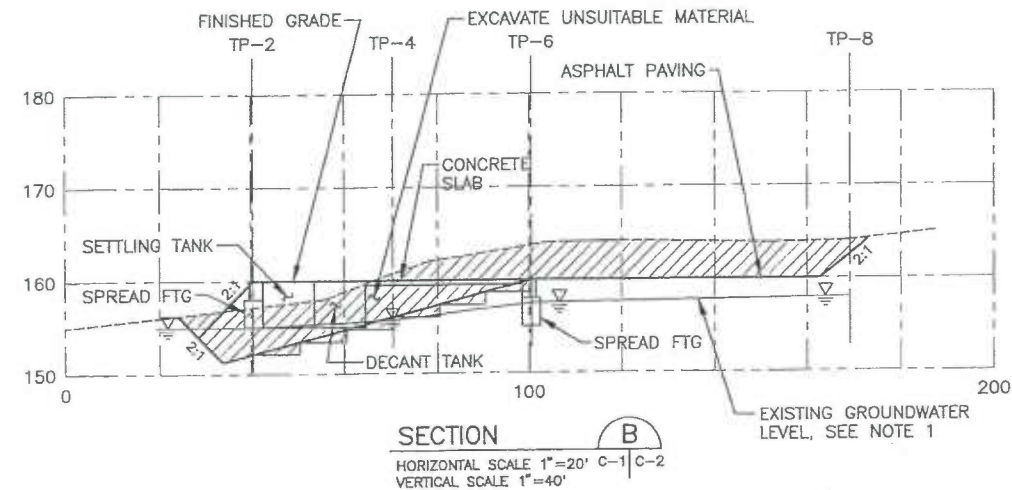
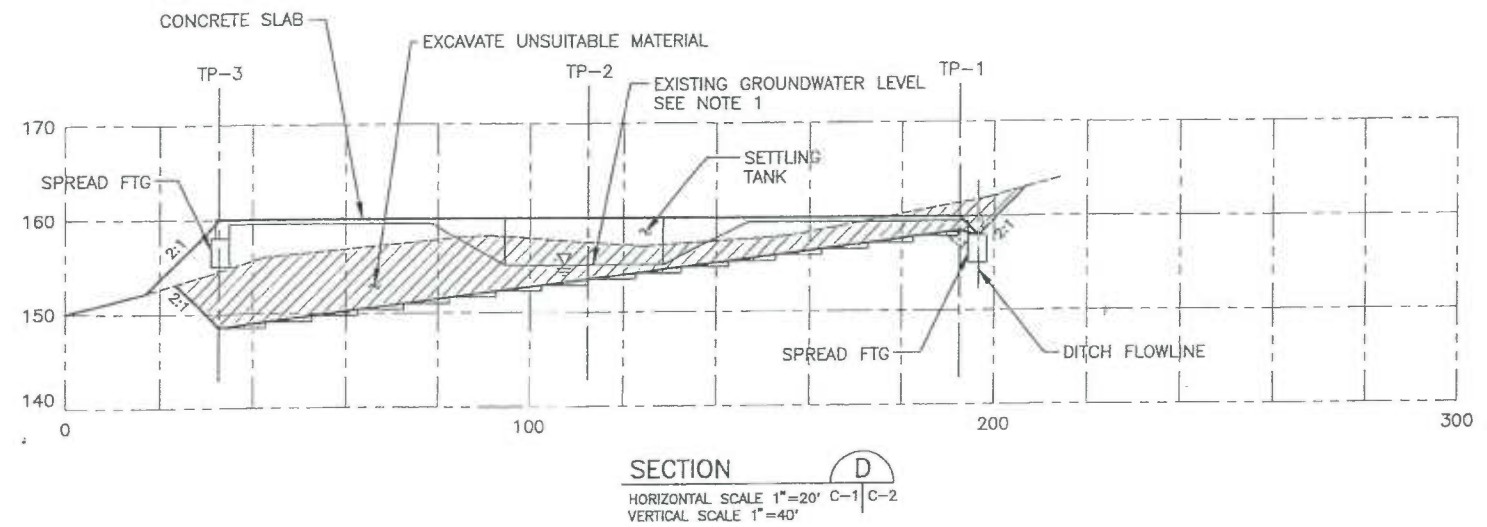
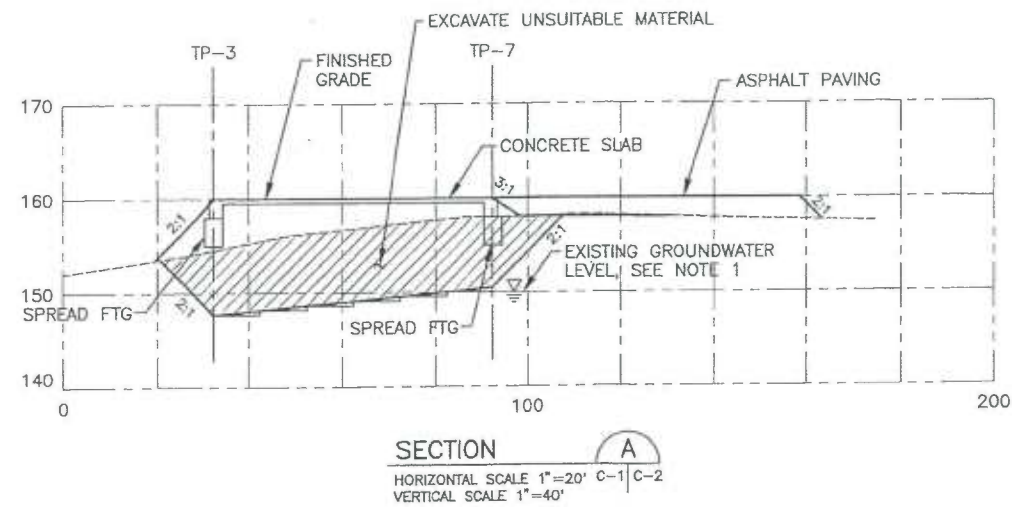
**Kitsap County Vactor Decant Facility**      **Kitsap County, WA**

**SITE PLAN**

PROJECT NUMBER	954045NC
DRAWING NUMBER	C-1

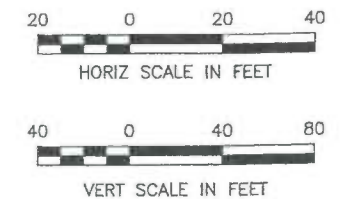
CAD FILE: C-1





**NOTES:**

- 1) EXISTING GROUNDWATER LEVELS AND TEST PIT (TP) LOCATIONS ARE PER "GEO TECHNICAL REPORT, PROPOSED VACTOR FACILITY, CENTRAL KITSAP WWTF, KITSAP COUNTY, WASHINGTON (MAY 2, 1997)," PREPARED BY HONG-WEST & ASSOCIATES, INC.
- 2) SEE DRAWING C-3 FOR TYPICAL DRAINAGE SWALE AND TRENCH DRAIN SECTIONS.



REV	DESCRIPTION OF REVISION	BY	DATE



**Woodward-Clyde Consultants**  
 Engineering & sciences applied to the earth & its environment

DESIGNED	KA
DRAWN	REG
CHECKED	AdS
PEER REVIEWER	MK
PROJ MANAGER	SA
DATE	9-17-97

Kitsap County Vactor Decant Facility Kitsap County, WA

GRADING SECTIONS

PROJECT NUMBER  
**954045NC**  
 DRAWING NUMBER  
**C-2**

CAD FILE: C-2