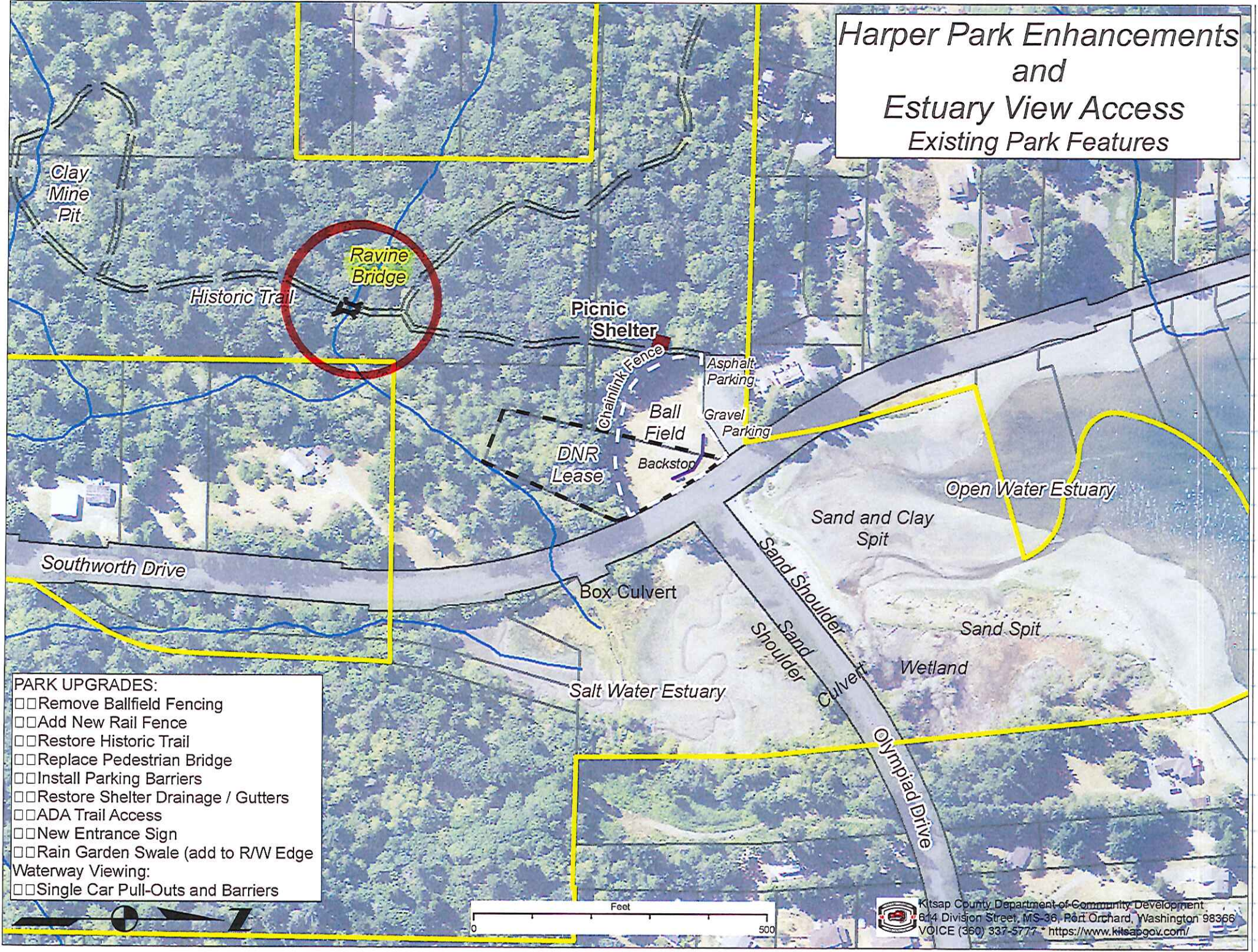
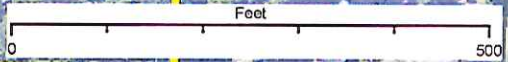


Harper Park Enhancements and Estuary View Access Existing Park Features



- PARK UPGRADES:**
- Remove Ballfield Fencing
 - Add New Rail Fence
 - Restore Historic Trail
 - Replace Pedestrian Bridge
 - Install Parking Barriers
 - Restore Shelter Drainage / Gutters
 - ADA Trail Access
 - New Entrance Sign
 - Rain Garden Swale (add to R/W Edge)
- Waterway Viewing:**
- Single Car Pull-Outs and Barriers



Kitsap County Department of Community Development
 614 Division Street, MS-36, Port Orchard, Washington 98366
 VOICE (360) 337-5777 * <https://www.kitsapgov.com/>

Permit Number: 19-00892