

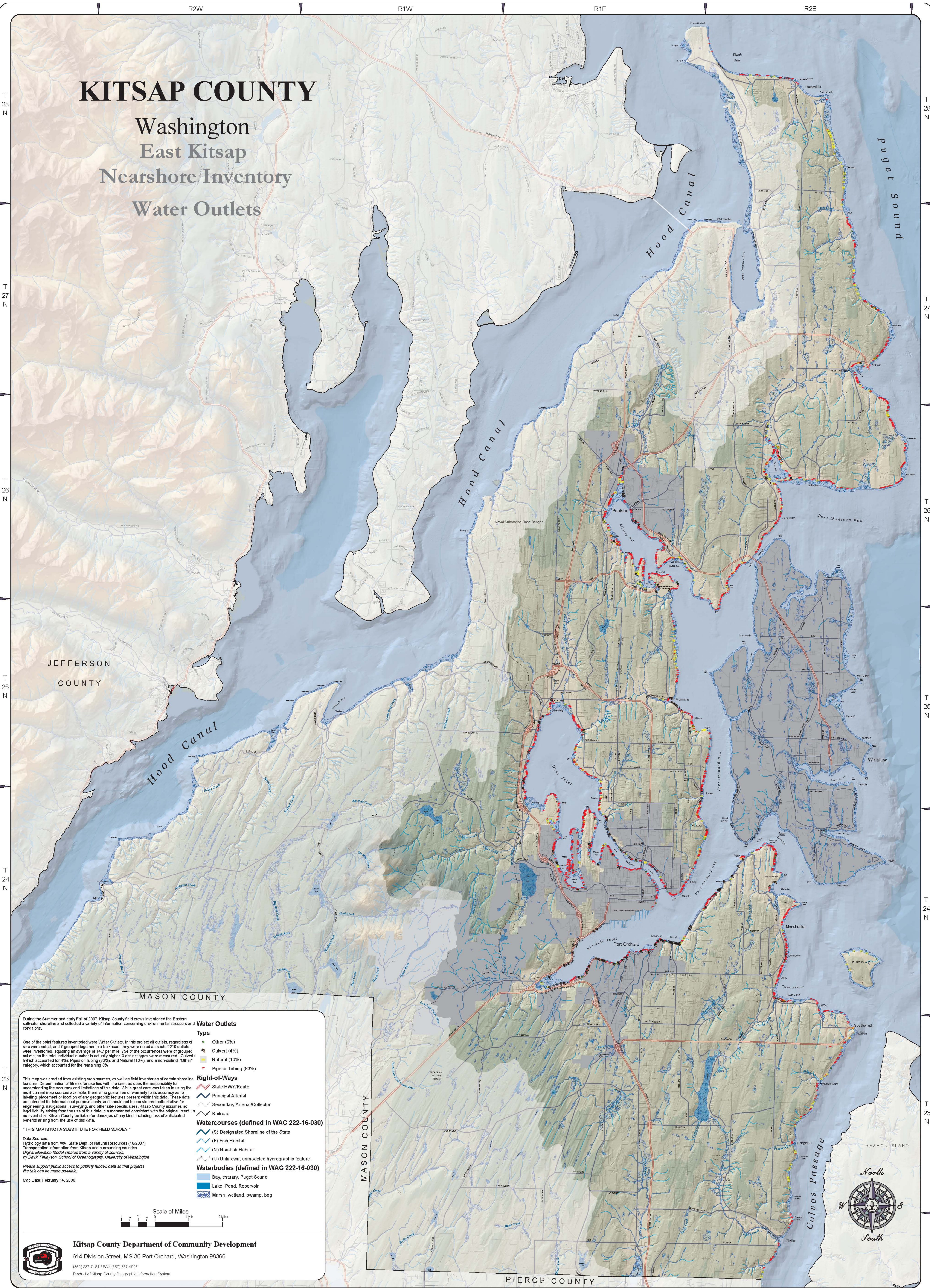
KITSAP COUNTY

Washington

East Kitsap

Nearshore Inventory

Water Outlets



During the Summer and early Fall of 2007, Kitsap County field crews inventoried the Eastern saltwater shoreline and collected a variety of information concerning environmental stressors and conditions.

One of the point features inventoried were Water Outlets. In this project all outlets, regardless of size were noted, and if grouped together in a bulkhead, they were noted as such. 2210 outlets were inventoried, equating an average of 14.7 per mile. 75% of the occurrences were of grouped outlets, so the total individual number is actually higher. 3 distinct types were measured - Culverts (which accounted for 4%), Pipes or Tubing (83%), and Natural (10%), and a non-distinct "Other" category, which accounted for the remaining 3%.

This map was created from existing map sources, as well as field inventories of certain shoreline features. Determination of fitness for use lies with the user, as does the responsibility for understanding the accuracy and limitations of this data. While great care was taken in using the most current map sources available, there is no guarantee or warranty to its accuracy as to labeling, placement or location of any geographic features present within this data. These data are intended for informational purposes only, and should not be considered authoritative for engineering, navigational, surveying, and other site-specific uses. Kitsap County assumes no legal liability arising from the use of this data in a manner not consistent with the original intent. In no event shall Kitsap County be liable for damages of any kind, including loss of anticipated benefits arising from the use of this data.

Water Outlets

Type	Percentage
Other	3%
Culvert	4%
Natural	10%
Pipe or Tubing	83%

Right-of-Ways

- State HWY/Route
- Principal Arterial
- Secondary Arterial/Collector
- Railroad

Watercourses (defined in WAC 222-16-030)

- (S) Designated Shoreline of the State
- (F) Fish Habitat
- (N) Non-fish Habitat
- (U) Unknown, unmodeled hydrographic feature.

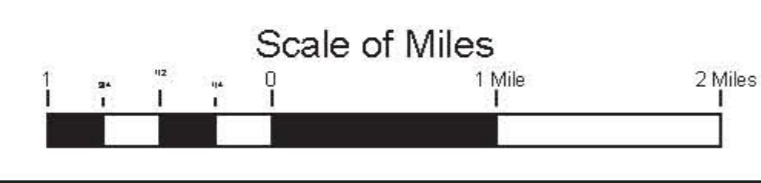
Waterbodies (defined in WAC 222-16-030)

- Bay, estuary, Puget Sound
- Lake, Pond, Reservoir
- Marsh, wetland, swamp, bog

Data Sources:
 Hydrology data from WA, State Dept. of Natural Resources (10/2007)
 Transportation information from Kitsap and surrounding counties.
 Digital Elevation Model created from a variety of sources.
 by David Fitzgibbon, School of Oceanography, University of Washington

Please support public access to publicly funded data so that projects like this can be made possible.

Map Date: February 14, 2008



Kitsap County Department of Community Development
 614 Division Street, MS-36 Port Orchard, Washington 98366
 (360) 337-7161 * FAX (360) 337-4925
 Product of Kitsap County Geographic Information System

