

Kitsap County Department of Community Development
Toward a Natural Resources Asset Management Plan for Kitsap County
 Workshop Agenda

Date: April 12, 2019

Location: Kitsap County Administration Building, 619 Division St, Port Orchard, WA 98366

Meeting Room: Port Blakely Conference Room - 3rd floor

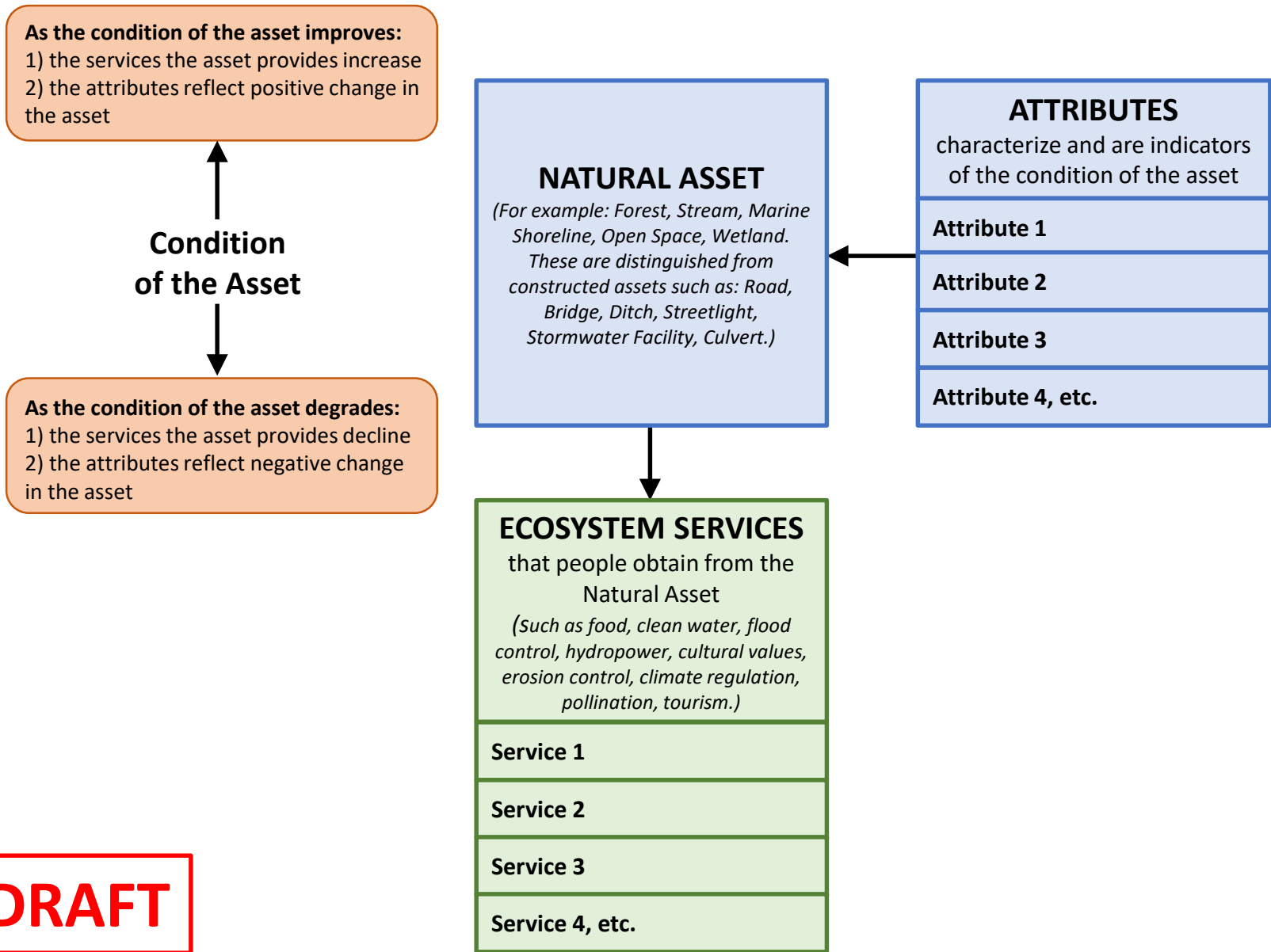
Goals:

1. Continue refinements of the Kitsap County Natural Resources Asset Management Plan's (KNRAMP) structural and logic models based on input offered by the group in the previous two workshops.
2. Finalize the ecosystem services that the program should prioritize for this initial phase, along with desired levels of services and ways to evaluate ecosystem services and make appropriate interventions.
3. Discuss funding paper and get feedback on approach.
4. Discuss parties ongoing roles in the KNRAMP development and implementation.

9:30 AM	<p>Welcome and Updates - Elizabeth McManus, Facilitator, Ross Strategic & Mindy Roberts, WEC</p> <ul style="list-style-type: none"> • Update on WEC grant renewal (Mindy Roberts) • Update on framework memo (Melia Paguirigan) • Findings from the March 2019 Natural Capital Symposium and potential applications to the Kitsap County Natural Resources Asset Management Plan (KNRAMP) (Melia Paguirigan) • NTA scope of work in development (Dave Ward)
9:45 AM	<p>KNRAMP Structural Model: Natural Assets, Ecosystem Services, and Attributes – Dave Ward (Kitsap County), WEC, All</p> <ul style="list-style-type: none"> • Overview of the KNRAMP Structural Model – Dave Ward • Clarifications and examples of KNRAMP elements, including natural assets, ecosystem services, and levels of services – All <p><i>Material: Draft Outline of KNRAMP Structural Model</i> <i>Outcome: Refined KNRAMP Structural Model and example applications</i></p>
10:15 AM	<p>KNRAMP Logic Model: KNRAMP Process Flow and Applications - Dave Ward (Kitsap County), WEC, All</p> <ul style="list-style-type: none"> • Overview of the KNRAMP Logic Model – Dave Ward • Clarifications on KNRAMP applications and process flow – All <p><i>Material: Draft Outline of KNRAMP Logic Model</i> <i>Outcome: Refined KNRAMP Logic Model</i></p>
10:50 AM	<p>Break</p>

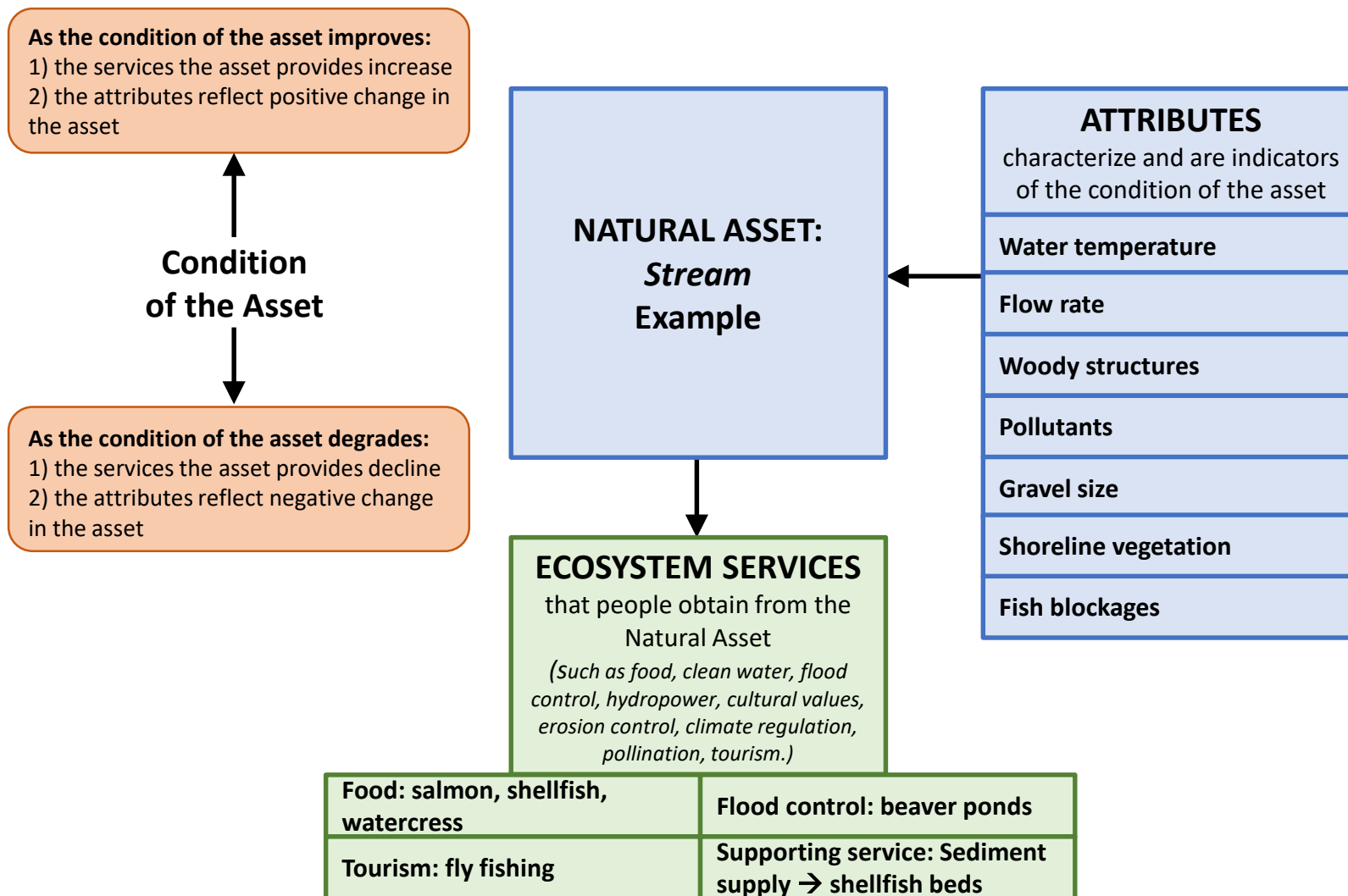
11:00 AM	<p>Cartegraph: Demo and Potential KNRAMP Uses – Angela Gallardo (Kitsap County Public Works)</p> <ul style="list-style-type: none"> • Cartegraph demo • Discuss existing Cartegraph components that KNRAMP could leverage, including structure and available data • Discuss other potential elements needed for KNRAMP that Cartegraph may not include and/or support <p><i>Outcome: Understand Cartegraph and clarify Cartegraph role in Logic Model boxes</i></p>
11:45 AM	<p>KNRAMP Logic Model in Practice: Example of Ecosystem Service Monitoring and Assessment - All</p> <ul style="list-style-type: none"> • Walk through a specific ecosystem service example based on the KNRAMP Logic Model <ul style="list-style-type: none"> ○ Identify natural assets and ecosystem services to be assessed ○ Example tiered levels of service – current, desired, interventions needed ○ Describe process for finalizing desired levels of services, ways to evaluate ecosystem services, program/project interventions, roles of different jurisdictions and other stakeholders, and ongoing monitoring. • Identify further refinements to the KNRAMP Logic Model <p><i>Outcome: Example application of KNRAMP Logic Model; clarification on decision process and roles feeding into logic model</i></p>
12:30 PM	<p>Decisions for April through June focus – All</p> <ul style="list-style-type: none"> • Describe updates to funding options for memo (Max Webster) • Decision on which ecosystem services to emphasize in framework and policy/funding options memos exercise (Max Webster) <p><i>Outcome: Clarify KNRAMP ecosystem services and understand path forward between now and June</i></p>
1:15 PM	<p>Next Steps - All</p> <ul style="list-style-type: none"> • Action plan between now and the June 3 workshop • Objectives for June 3 workshop • Path forward for policy and funding memo and framework memo
1:30 PM	<p>Adjourn</p>

Kitsap County Natural Asset Management – Structural Model



Kitsap County Natural Asset Management – Structural Model

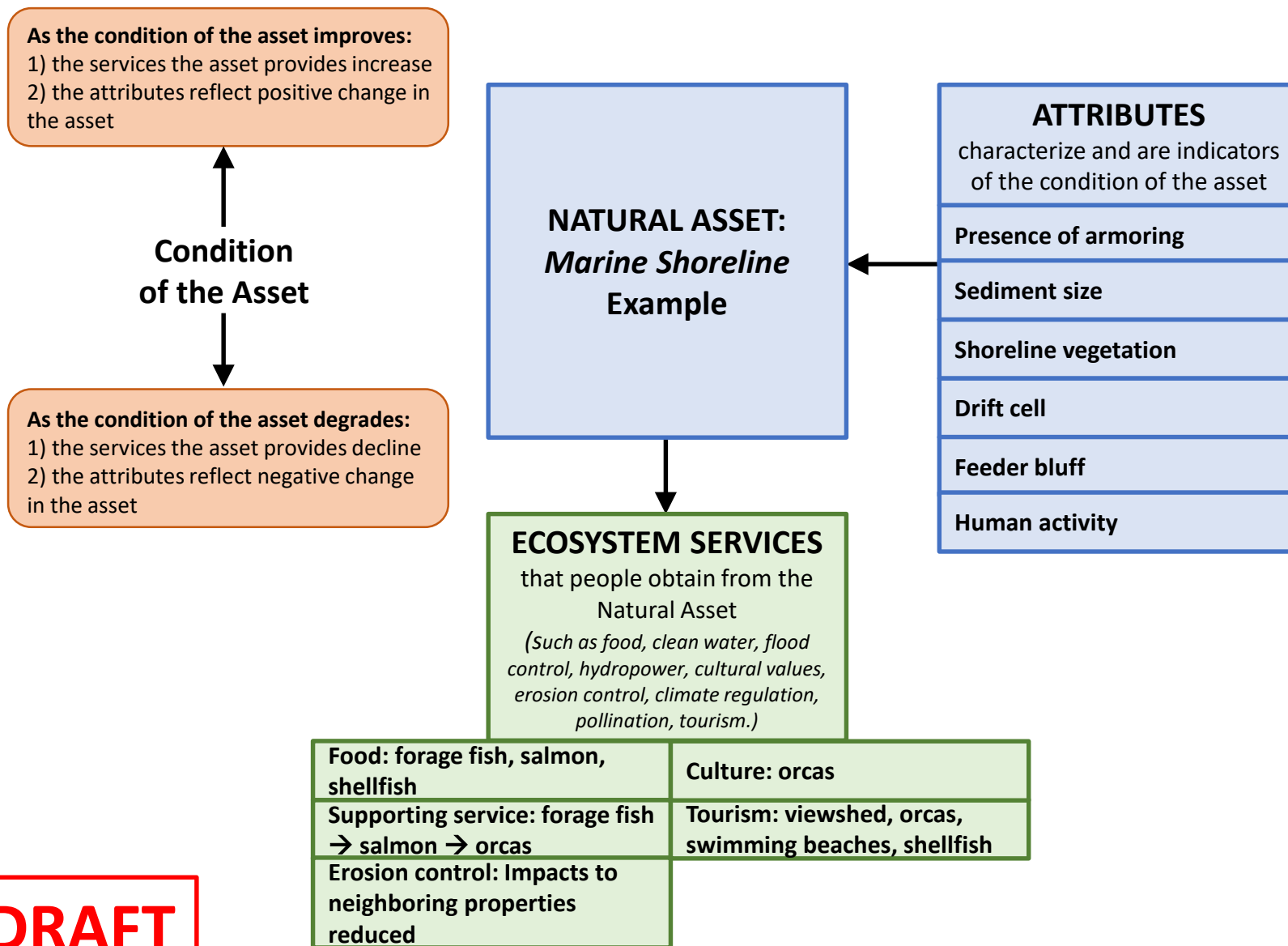
Example 1



DRAFT

Kitsap County Natural Asset Management – Structural Model

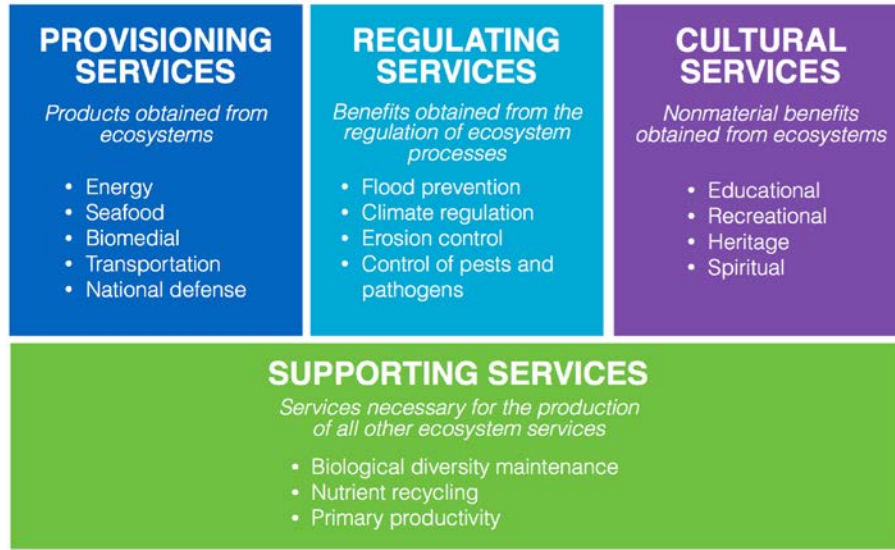
Example 2



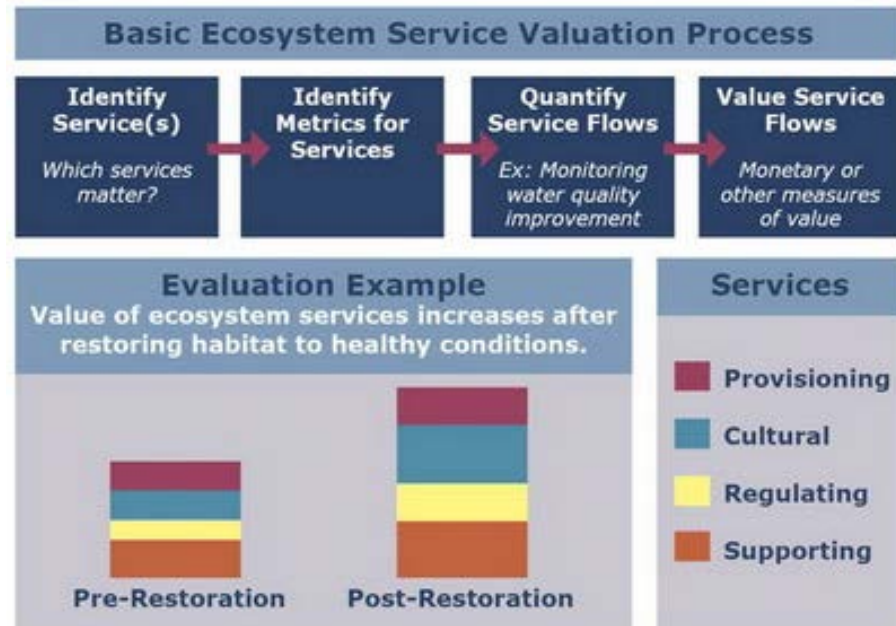
DRAFT

Kitsap County Natural Asset Management – References

ECOSYSTEM SERVICES



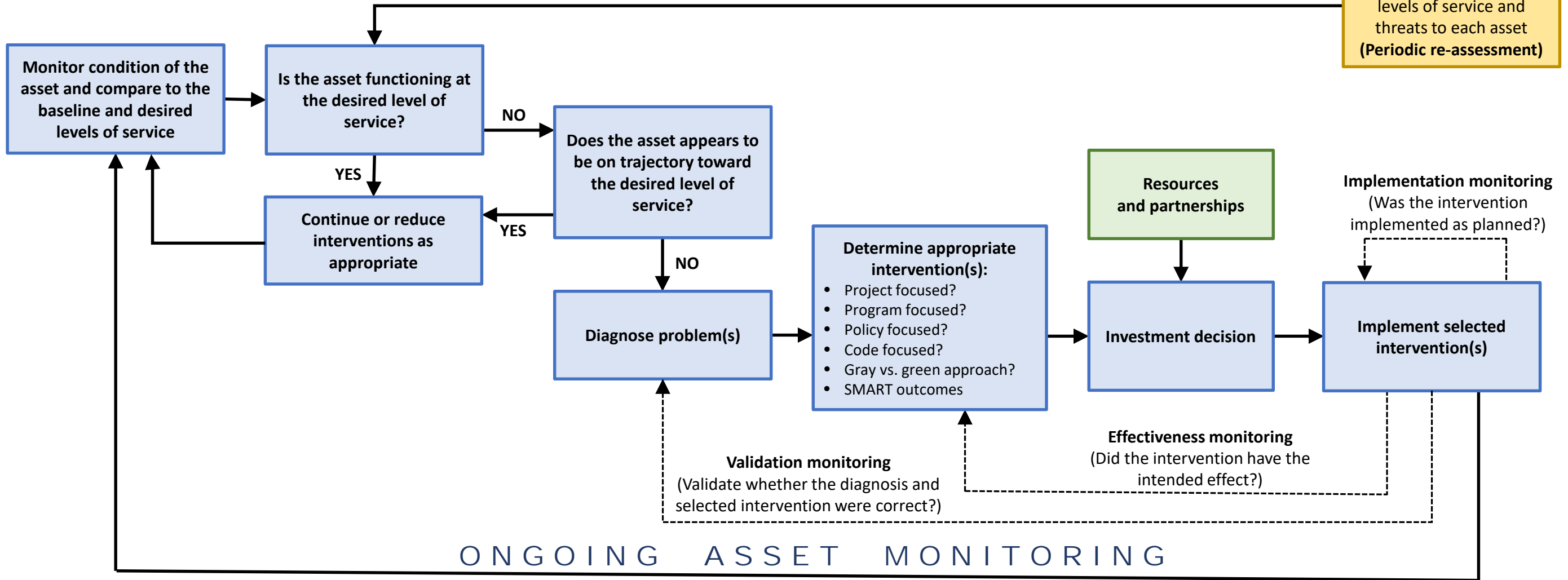
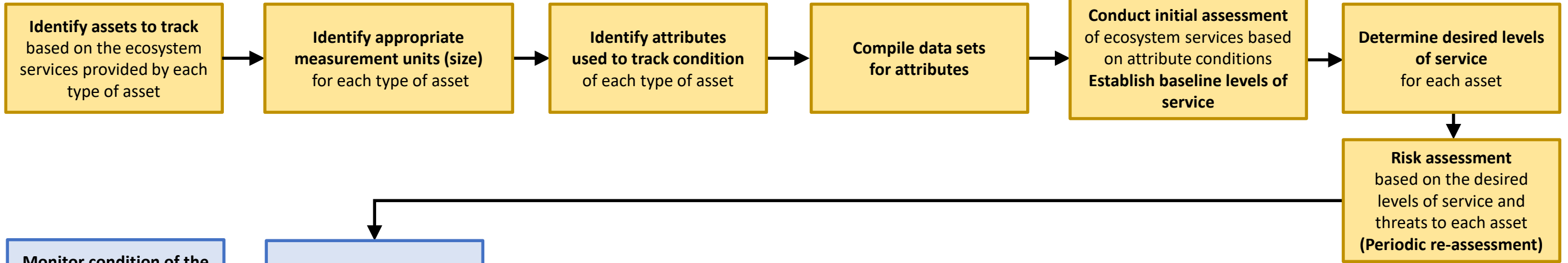
source: *Final Recommendations of the Interagency Ocean Policy Taskforce, 2010*



Kitsap County Natural Resources Asset Management Logic Model

DRAFT

SYSTEM SETUP



ONGOING ASSET MONITORING