

OUR PURPOSE...

TO HELP OLDER PERSONS REMAIN AS INDEPENDENT AS THEY WANT FOR AS LONG AS THEY CAN.

Organizational Values

- Promote client independence
- Respect diversity and ensure equal access
- Involve people in decisions
- Act with personal and professional integrity
- Pursue excellence in service
- Use public and private resources responsibly
- Continuously advance innovation and quality improvements
- Work cooperatively on issues of aging and disability

Kitsap County
Aging & Long Term Care Services



SENIOR INFORMATION & ASSISTANCE

1026 Sidney Avenue
Suite 105
Port Orchard, WA 98366

8:00 a.m. - 4:30 p.m.
Monday - Friday

360-337-5700
1-800-562-6418

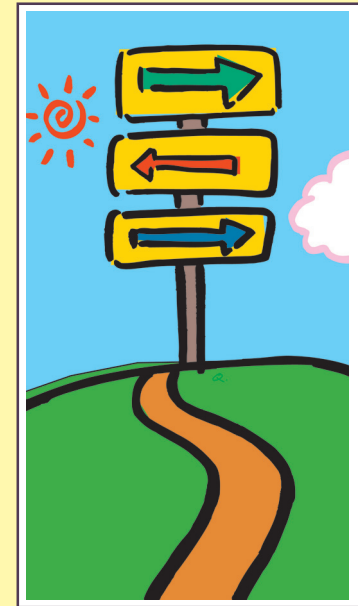
This program of Kitsap County Aging & Long Term Care is funded by the federal Older Americans Act and Senior Citizens Services Act.

Senior Information & Assistance services are available at no charge to all persons who are at least 60 years of age, or an adult informal caregiver, without discrimination and regardless of handicap, in accordance with state and federal laws.

All services provided within mandated reporter guidelines per WAC 388-101-4150

Senior Information & Assistance

Where to turn...



...for Answers on Aging



Kitsap County Aging & Long Term Care

Answers on Aging

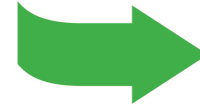


Caring, professional staff provide...

- Information and referral to local services
- Advocacy and support to obtain public benefits
- Assistance with completing applications
- Individual, family, and public education on aging issues

Senior Information & Assistance

Help starts with just one phone call.



360-337-5700
1-800-562-6418

Our services are free of charge!

~ Call us or stop by ~

We're open Monday - Friday 8:00am - 4:30pm

Intake Specialists

- Help you assess self-care abilities and needs
- Identify options to meet those needs
- Assist with planning next-steps
- Provide informational brochures, video, or web resources specific to your health or caregiving needs

Information & Referral

- [Placeholder icons]
- [Placeholder icons]
- [Placeholder icons]
- [Placeholder icons]
- Counseling
- Caregiver support
- Utility assistance
- Personal emergency response system
- Housing
- Transportation
- Social activities
- [Placeholder icons]
- [Placeholder icons]