

KITSAP COUNTY PARKS DEPARTMENT

Director's Monthly Report

October 2016

Manager's Team Building

The Parks Management team will not be able to attend the October PRAB meeting. They will be participating in a management team building exercise.

Newberry Hill Heritage Park

Kitsap County Board of Commissioners approved the Inter Local Agreement (ILA) between Kitsap County and Central Kitsap School District for use of respective properties within Newberry Hill Heritage Park/Klahowya Secondary School complex. The resolution was adopted September 26.

Tideland Management Strategy

Parks staff will be meeting with WDFW to discuss potential strategies to manage shellfish harvesting of tidelands, to include Anderson Landing and Guillemot Cove. A similar approach led to an agreement with WDFW to manage and enforce shellfish harvesting at Port Gamble Forest Heritage Park in 2016.

WDFW collaborates with the tribes on developing annual harvest agreements for public tidelands. The Point No Point Treaty tribes have an interest in harvesting these beaches for commercial purposes (as opposed to subsistence harvest) standard protocol would be to categorize these beaches in the harvest agreements as "active management tidelands". This designation requires that the co-managers establish conservation based harvest rates on the resource and annual harvest shares for the treaty and non-treaty fisheries.

In most cases, the harvest shares are based on a 50-50 sharing objective for treaty and recreational fisheries. All clam and oyster harvest shares are derived from population surveys. The frequency of oyster population surveys is determined as part of the state and tribal agreement for the region, and varies from annually to once every 5 years, depending on intensity of harvest and population age class structure. The state and tribes have a process for reducing harvest shares to account for years between population surveys. The Point No Point Treaty tribes have recently surveyed Anderson Landing and Guillemot Cove there is current population data to work with for 2017.

Once the harvest shares are established WDFW works would work with Kitsap County Park staff to design recreational harvest season. Special consideration is given to concerns such as natural site limitations, use restrictions, parking, access, predicted peak recreational use, and Department of Health restrictions.

Public Hearings – Budget Approvals

- 6 Year Capital Facilities Plan (2017-2022) – November 14, County Admin Bldg., 5:30pm
- 2017 Operating Budget – December 5, County Admin Bldg., at 5:30pm

Parks and Recreation Department Superintendent of Operations Report

Fairgrounds & Events Center, Village Greens Golf Shop, Permitting Process, Marketing
September 2016

Facilities/Grounds

- Eagle Scout Projects – 1 in progress.
- Parks office roof was cleaned of moss.
- Lobe Field #1 had irrigation renovated due to some dry spots and lack of even coverage
- Pavilion Roof leaked after storm – contractor correcting.

Grants

Boand Family Foundation Grant - Lower Arena Roof

- Staff has requested that the drain field be capped off and that we pump tanks as needed to cap off drain field and pump tanks as needed rather than filling in tanks and abandoning the restroom facility. Health District is reviewing request.
- Fencing to be installed by end of October. Plants are planted
- Large sign on East end has been hung
- Hydroseeding will be sprayed this week on the west and east ends
- Ribbon Cutting ceremony postponed until occupancy permit is provided

PFD Funding - Phase One - Lobe Field Improvements.

- Umpire Dressing room - exterior painted, ramp corrections made, flooring needs to be finished.
- Change orders – Contractor to scheduling fencing changes with Viking Fence

Department of Agriculture Health & Safety Grant

- Complete. Staff working on report.

Rental/Events (Economic Development)

- Events held included: **Late September** –Gig Harbor Kennel Club AKC Dog Show, West Sound Quilt Show, Home & Recreation Show. **October** – Just Between Friends Children's Consignment Sale, New Life Women's Conference, Vintage Market, Polynesian Holiday Bazaar, Miss Kitsap Fair & Stampede Pageant, Mushroom Show, Halloween Fun Run, Haunted Fairgrounds (9), Cross Country Run

Staffing/Training

- 1 Staff attended Causeway webinar training in September
- Stewardship Coordinator providing staff 1st Aid/CPR Training in October
- 1 staff attending WRPA Fall Summit Training in October
- 1 staff to attend Change Management Training in December
- Extra Help staff help ended at Fairgrounds and Village Green
- Mission Creek Crew scheduled each Monday to assist Fairgrounds Maintenance
- Maintenance Staff training schedule for 2017 being planned

Reservation Process - Lean Process

- Online applications are in beta testing with the “one” application that will combine all in final stages of development. So far beta testers have liked the online application.
- 6 documents being approved/revised should be completed by November 1
- Kiosk is ready to go when online application is complete
- Anticipate Soft implementation by December 1 and going live on January 1

Village Greens Golf Shop

- First Tee Fall session going well. Fall session ends October 22. Staff will meet with First Tee to evaluate the program and plan for 2017
- Hours changed this month to 8:00am-5:45pm
- Extra Help staff’s last scheduled hours was October 2 , permanent staff are on 3 10 hour shifts per week
- Golf instructor ran a tournament on September 22 and plans to hold one more in October
- Golf instructor and staff are planning for 2017 season tournaments
- Last day of golf for the season will be November 20

E-Tix Program

- Home & Recreation Show ticketing went well
- Ticket sellers are scheduled for the Haunted Fairgrounds nine events in October
- Tickets are on sale now online for the Haunted Fairgrounds
- Haunted Fairgrounds first weekend sold 71 more tickets than last year’s first weekend

Work Parties

- Volunteer David Grant has several rotten wood repairs he is making at the Kitsap Kids Playground
- Volunteer Cliff Hanson is working on a variety of projects including a gate
- Mission Creek Crew scheduled at Fairgrounds maintenance every Monday
- Washington Youth Academy mentor program brought 25 youth and their mentors on grounds to assist with Board Arena plants and weeding

Vandalism/Theft

- Thunderbird upper concession and restroom building (backside) were tagged – staff painted the entire back of the building.
- Staff in process of cleaning up after vandalism tagging in the playground area that occurred before the fair.

Capital Projects 2016

- HVAC units in the Pavilion – Units are in, contractor ordered new control systems and will install when they arrive.
- Type 1 Hood - Presidents' Hall Kitchen type 1 hood. This project is completed
- Tennis Courts Improvements – Contractor has been working on courts 5 & 6 but no surfacing has been added to any of the courts.
- Lobe Fields PA System upgrade – To be installed after Press Box is placed
- Pavilion Roof Repair & Painting – Contractor has completed the north side of the roof and stated that they completed repairs that were needed. South side has seal coating on it but still needs to have color seal coat added. Front of building has not yet been started.
- Concession Upgrade (new press box on Lobe #1) – Site Walk October 6 brought too many issues up. Bid was removed. Staff will work with architect and engineer to revise prior to sending out for new bid.
- Storage Building for Presidents' Hall – Contractor is in permit process.

KITSAP COUNTY PARKS DEPARTMENT

Parks Resource Division Monthly Report October 2016

Central Parks

Anderson Hill Athletic Fields

Staff working on new handicap parking and user parking requirements. Tree removal along the fields still a work in progress. This will increase air flow and more sunlight onto the fields, thus allowing the fields dry out, and increase play on the fields.

Anna Smith Park

Members off the U.S.S. Nimitz adopted the park. Will be installing new round stock fencing along the pond, general park cleanup and removing English ivy.

SWF Park

Parks staff to install new park lighting – bollard style – [electrician scheduling the installation. Gazebo to be re-roofed in October, in-house work.](#)

Guillemot Cove

Parks staff looking into the demolishing of the old Nest House, and the removal of the contents from the Nest house and the Barn. Researching funding sources to maintain and repair the (7) culverts and various ditches on the main service road. Parks staff looking into the overall condition of the beach house, whether to keep or not.

Wildcat Lake Park

Parks staff working with local companies towards prices and cost towards the piling removal in swimming area.
Parks staff to re-roof the restroom building this fall.

Old Mill Park

Parks staff to work with local volunteers to rehab the front entrance into the park. Entrance and front of the park to be landscaped.

North Parks

Kola Kole Park

Parks staff maintaining all of this park. Parks staff completed fall turf maintenance of fields. Storage building re-roofing slated for this fall. Building painted.

Norwegian Point Park

Well house, power pole and electrical improvements. Future park master planning process.

- Volunteers have reinforced the back of the boathouse to protect from water intrusion into the building. The next step will be painting portions of the building.
- Community volunteers working with local contractor to re-roof the boathouse. Slated to be completed the 3rd week in September. COMPLETED.

Point No Point Lighthouse Park

Resetting of the split rail fencing near the wetlands performed by Coast Guard sailors. COMPLETED.

- Volunteers completed the ADA access ramp to the wildlife viewing platform.
- Audubon Society volunteers are working with staff to develop an IBA (Important Birding Area) interpretive sign for the park. Kitsap Audubon Society is paying for the manufacture of the sign. SIGN INSTALL COMPLETED.

Buck Lake Park

Parks staff working with DNR, WDFW and KC Noxious Weed Coordinator, on lake weed removal to restore swimming area.

Parks staff working with local companies towards costs of piling removal in swimming area.

Salsbury Point Park

Parks staff to re-roof the lower well house this fall. COMPLETED. New landscaping to be added in flower beds around the unisex restroom. Floating dock to be removed for the season on 10-18.

South Parks

Horseshoe Lake Park

Parks staff working with local companies towards prices and cost towards the piling removal in swimming area.

Anderson Point Park

Staff still working the trail and ditches, clearing and removing trees.

The lower trail washout area work to be completed on September 19. Park to be closed during this time frame and re-opened on the 20th.

Parks staff started performing Milihanna Road maintenance – looks great.

The smaller gravel to be added to the trail this fall.

Olalla Boat Launch

Patrons from Al's store across from the launch, have started using the park parking lot for store use.

Parks staff installed BEACH FIRES PROHIBITED sign, PARK USE ONLY sign. The new park entrance sandblasted sign is installed.

Rotary Park

Parks staff to remove trees in various locations in the park and install a drainage ditch along field #1 to improve field play. Parks staff looking to improve to allow for more use on these fields, with local youth soccer for fall use and little league play in summer.

Harper Park

Parks staff removing the old metal bridge.

SKRP

Parks staff continues to work with KCSO, to deter illicit activities at the park. Increased presence of KCSO. Parks staff looking at performing work inside the horseshoe pit, park and ball field.

The installation of the irrigation weather station component slated for installation.

The revision to the Horseshoe Pitch area underway between parks staff and the HPA.

Parks staff working with the WCC in general park cleanup of logs and woody debris from tree's being felled in 2015.

Parks staff meeting with Public Works staffing on (3) small park projects. Ecology block removal, stump removal and concrete footing removal.

Veterans Park

The removal of dead trees along the frontage of the park ongoing with the WCC and parks staff.

KCSO and Port Orchard Police working with parks staff on homelessness/camps in the woods.

Updates –

- Parks staff is conducting a Chain Saw Safety class for volunteers.
- Parks staff training: NPDES/IPM and Situational Awareness with KC Risk Management.
- Parks staff training: Active Shooter Training in the fall. COMPLETED.
- Parks staff training: CPR/1st Aide.
- Parks staff to have additional training and safety measures put in place to minimize sharps exposures.

Stewardship Coordinator

Point No Point

- 6,707 people, from 20 different countries, visited the lighthouse this year between April 1 and September 30!
- School Outreach docents welcomed 6 classrooms of students to the Lighthouse where they learned about the history of the lighthouse and the surround environment.

Port Gamble

- Volunteers continue to work on the new bridge crossing on Beaver Trail.
- Volunteers cleared the new Shoreline Trail and built a round rail fence at the Shoreline parking area

North Kitsap Heritage Park

- Stewards had a very successful work day with the LDS church, boy scouts, and Navy volunteers clearing culverts, and removing scotch broom.

View Point

- This park will be closed for the winter season from Oct 1 – March 30.

Howe Farm

- Howe Farm volunteers had a very successful meteor shower party on Saturday, August 13.

South Kitsap Regional Park

- Geocache volunteers and Boy Scouts did a park clean-up and hauled out 350 – 400 pounds of garbage!

Banner Forest

- Banner Forest stewards are working with Arno to develop a Forest Management plan for Banner.
- Lori and Mike Collins (Banner) are working with a Life Skills class from SKHS to adopt a trail at Banner Forest.

Newberry Hill Heritage Park

- Stewards are working with WCC to clear a trail in the southern portion of the park.
- Frank Stricklin is working with Jim Aho (Illahee) to finalize the Beaver Pond Boardwalk/bridge.

Guillemot Cove

- Boy Scouts have relocated an old boardwalk to a new location to tie into the new bridge. Another scout is completing his Eagle Scout by building an additional boardwalk to connect the service road to the large bridge.

Chico Salmon Park

- Stewards are preparing for Salmon Tours on Nov. 5th

Updates:

- Lori is developing a newsletter that will go out to volunteers monthly
- Stewardship group are beginning work on their 2017 Work Plans

Parks and Recreation Advisory Board – August.2016

Parks Planning Report

Steven Starlund | Ric Catron

Kola Kola – Kingston Schoolhouse Landscaping

Park Staff and WCC crews have removed the older shrubs away from the building and cleared out the juniper and tree roots. The newly leveled ground is now ready to till in compost and add a new array of flowering plants.

PORT GAMBLE FOREST HERITAGE PARK – Stewardship | Trails

Pope/Doe’s cleanup of the shoreline access (at old warf site) was completed after an additional excavation of concrete and iron debris. The resulting re-grading of the slope to the beach created a 7:1 slope, a much safer gradual access to the beach from our BayShore Trailhead.

Work can now address a gravel pathway to the beach and grass seeding of the slope/bluff area.

Beaver Pond Boardwalk replacement is progressing with a final setting of rock gabions. Six cedar logs have been located and will be moved into place



Point No Point --Restrooms



Construction is near complete for Romtec restrooms with interior painting remaining. Final opening is awaiting final inspections.

North Kitsap Heritage Park – Landscape Planning

NKHP Stewards began a Land Classification and Resource Management Plan for the Park. Stewards are identifying overall park goals, issues, and management objectives. Planning will continue over the next few months.



South Kitsap Regional Park

Park Phase 1-C Expansion: Sealevel Builders was awarded the bid for park improvements including skate park additions. DCD completed a preconstruction meeting. Parks submitted a building permit, plans and specifications for the Skatepark addition. Awaiting review and approval before proceeding. Parks is going out to bid for new Romtec restroom construction for that park.



Community Forestry Program Update

October 2016

Restoration Thinning

Restoration thinning operations at Port Gamble Forest Heritage Park will began the week of September 26th with road maintenance. Thinning started on October 12th.

Per the restoration thinning schedule in Forest Stewardship Plan for Newberry Hill Heritage Park, a 50 acre unit in the southern most part of the park is being prepared for the first quarter of 2017.

Planning for thinning at North Kitsap Heritage Park continues and is expected to occur mid to late 2017.

Forest Stewardship Planning

Forest inventory and wetland/stream data collection is underway at Coulter Creek Heritage Park. This information will inform the restoration prescriptions, a core element of the forest stewardship plan and master plan for the park.

Forest Stewardship planning for Banner Forest is underway with the development of revised forest unit maps along with updating the forest inventory.

Urban Forestry Restoration Grant

The WCC crew has worked on clearing .75 miles of the service road at Banner Forest; doing wetland delineation and tree marking at Newberry Hill Heritage; landscape site work at Kola Kole Part; and invasive weed control at Port Gamble Forest. Crews will be working on projects at Port Gamble Forest, Newberry Hill and North Kitsap Heritage Parks. Forest restoration activities that the crew will be working on including: road and trail work, noxious weed control, tree planting, road culvert maintenance, tree pruning, wetland and riparian delineation, and marking trees for restoration thinning.



Community Forestry Program Project - Timeline

Project List	Timeline
Park Wildfire Protection Planning	September 2015 through December 2016
Planning 2016 Restoration Thinning	November 2015 through December 2017
Restoration Thinning @ Port Gamble Forest Heritage Park	October 2016 through February 2017
Restoration Thinning @ Newberry Hill Heritage Park	March through April 2017
Restoration Thinning @ Coulter Creek Heritage Park	May through September 2017
Restoration Thinning @ North Kitsap Heritage Park	October through December 2017
Coulter Creek Heritage Park – Forest Stewardship Planning	May 2016 through February 2017
Banner Forest Heritage Park – Forest Stewardship Planning	May 2016 through February 2017
Danger Tree Planning and Removal – South Kitsap Regional	October 2016 through April 2017
Urban Forestry Restoration Program Projects	October 2016 and February & May 2017
Park Steward Training/Education	September 2016 through March 2017
Restoration Tree Planting	January through March 2017

Oct 2016

Forest Stewardship Report

Members in attendance:

Arno Bergstrom KC Forester

Paul Larson NKHP

Steve Wegand NKHP

Tom NKHP

Frank Stricklin NHHP and PRAB

John Willett

Financial handout

presented by Arno for period 2014 to 3rd Quarter 2016 with projections for last quarter 2016 through 2018.

Forest Stewardship Program.

General discussion of the programs benefits led to a resolution by the subcommittee to draft a motion for program continuance for BOCCs resolution 169-2012. Frank Stricklin was tasked with drafting the resolution for presentation to the PRAB for consideration.

Restoration Thinning Schedule

Submitted for 2016-17 and 18. Port Gamble, Newberry Hill HP, Coulter Creek HP and North Kitsap HP

Brush Leases

Current contracts expire 31 Dec 2016. New contract in place for Coulter Creek and other leases out for bids. Bids close October 20th.

10-2016

Newberry Hill Heritage Park

Cleared culvert 17 of beaver debris in advance of winter rains. 18 remains plugged.

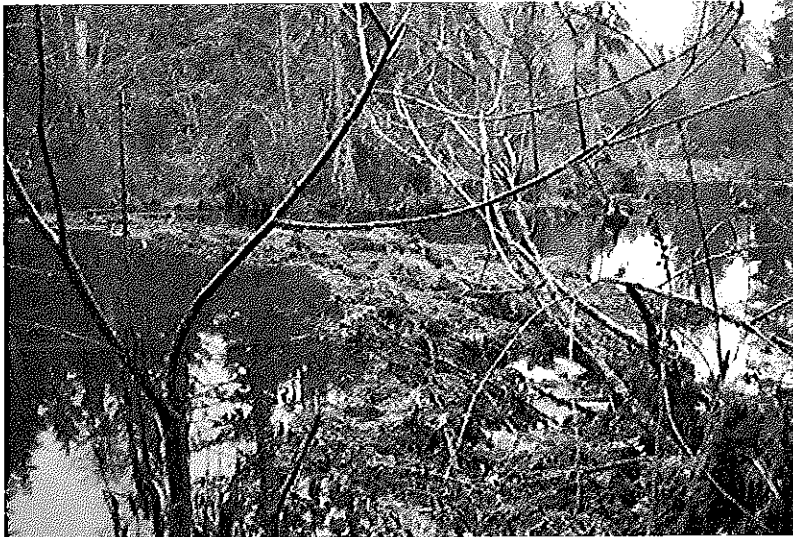
Noxious weed control on Coyote Loop and at the Interactive Wetland site. Log landings and other areas will need a lot of attention for Scotch Broom removal. This is ongoing. Spurge Laurel has been discovered in the south end of the park and removal has started.

Graded and ditched new stretch of Old Loop Parkway and unnamed main entrance trail behind CKFR station 56. Ditched, sloped and graded Rhodie Hill at the north junction of Old Loop Parkway. Thanks to Dori Leckner.

Armored culvert inlets at 4A, 4B and 4C with erratics uncovered by grading.

Applied 84 tons of 7/8 minus pit borrow to Old Loop Parkway. Thanks to Arno and Steward Keith Asbury.

Supported CKPTSA Council 5k run on Old Loop Parkway to benefit CKSD Lite-house program and others.



Delineated and Geo-mapped several wetlands south of the Seabeck Highway with assistance from WCC crew and WSU Stream Steward Bill Wasson. Two remained to be mapped. GPX files will be uploaded to ARC GIS. RMZ for unnamed tributary to Wildcat Creek and Wildcat Creek will be set at 200 ft.

Began clearing storm damage. Trees down on Green Mountain Parkway, and Old Loop Parkway. Work party on the 22nd of October to remove many more downed trees.

Planted willows along shoreline of Little Anderson Pond



KITSAP FOREST AND BAY COMMUNITY CAMPAIGN

Statement of Common Vision for Future Stewardship Port Gamble Forest Heritage Park Expansion Areas

For many years North Kitsap stakeholders, Kitsap County officials and leadership of the Port Gamble S'Klallam Tribe and Suquamish Tribe have worked both independently and together to assure the long term protection of the Port Gamble Forest as a community asset.

While the stakeholders have diverse objectives, all participants recognize the value and necessity for a commonly agreed upon approach both to the acquisition and the long-term stewardship of the property.

In order to maximize the conservation impact with the funding available, and to cost-effectively prepare the land for native forest regeneration, the coalition intends to purchase outright areas critical for wetland and stream function along with the most mature trees. Additionally, the coalition will purchase rights to access trails, prohibit development and secure future land ownership, all at a significantly reduced purchase cost. This agreement will allow Pope Resources to gradually harvest the trees planted and cultivated for tree farm purposes over the next 30 years, and to replant the forest with a diverse mosaic of native species before turning over responsibility for land management to the community. The community campaign will complete current efforts to conserve the Port Gamble Forest, setting the course for restoration of cultural resources and ecological functions while securing a community treasure in the heart of the greater Puget Sound area.

The stakeholders, County and Tribes have a demonstrated track record of success, already having raised and purchased over \$8M worth of forestland in North Kitsap, including over 500 acres and 1.5 miles of shoreline along Port Gamble Bay. The parties have further demonstrated the collective ability to achieve consensus with the work invested in Kitsap County's Forest Stewardship Plan for the Ecological Restoration of the Port Gamble Forest Heritage Park which was formally adopted by the County in October of 2015. This park stewardship plan falls within the parameters of the widely-vetted Integrated Kitsap County Forest Stewardship Policy which was adopted in 2012 and which is scheduled to be reviewed in 2016. With this track record in place, we have now entered a community campaign phase, seeking to raise private philanthropic funds to leverage \$4M in public acquisition dollars towards the purchase of the remainder of the available forest land above Port Gamble Bay.

Kitsap County's Heritage Park Stewardship program provides the financial resources through selective timber management to support needed managerial oversight and infrastructure for publicly accessible forests; a structure for Tribal government consultation; opportunity for stakeholders to provide input on planning and implementation; and the programmatic infrastructure to guide the dedication and enthusiasm of volunteers to build trails, care for facilities and restore native vegetation.

While it is premature for the parties to pre-commit to a stewardship plan for yet-to-be acquired acres, the undersigned stakeholders and government officials affirm a common purpose and commitment to develop and implement a long-term stewardship plan that as best as possible accommodates the various parties' objectives with a strong desire to support each other's needed outcomes and to achieve a consensus-based plan for the stewardship of additional lands purchased as part of the Port Gamble Forest conservation effort.

The parties furthermore concur that the already adopted vision for the Port Gamble Forest Heritage Park is in keeping with their objectives for additional lands purchased as part of the Port Gamble Forest conservation effort. Specifically:

VISION: The Port Gamble Forest Heritage Park (PGFHP) is an ecologically complex, diverse, and healthy forest that provides optimum wildlife habitat for a wide range of animal species.

Port Gamble Forest Heritage Park currently has a range of forest types from simple monoculture, tree farm plantations, to several complex natural second growth forests. These complex forests serve as reference stands as they support a diverse community of animals, high productivity for plants, and a replenishment of the water cycle. The approach will be to use forest ecosystem restoration, a process that considers the environment as a complex system functioning as a whole. Because this is a park that is extensively used by people, restoration must also consider the social values of the community. Forest ecosystem restoration will rely heavily on partnership with park stewards, as well as private, tribal, local, state, and federal government stakeholders. The ecosystem restoration approach will be to:

- *Work with nature:* Work with native plant species that have evolved and adapted to our temperate climate and are competitive and resistant to disease and insects.
- *Enhance forest wildlife habitat:* Structurally diverse forests provide the best habitat for the greatest number of wildlife species. A diverse forest habitat also includes dead and dying tree for snags and large woody debris.
- *Diversify plant species:* Forests comprised of mixed native tree species improve habitat, aesthetics, and the value of both timber and non-timber assets and better support diverse wildlife populations.
- *Recognize the connection between all plants, fungi and animals:* all creatures contribute to a healthy and dynamic forest ecosystem.
- *Protect water as a vital resource:* Healthy, vibrant forest ecosystems are the best and least costly option for maintaining high water quality and for the management of surface and storm water runoff.
- *Consider that human park users are part of the system and critical to the decision making about the future of the park.*

The undersigned offer their personal commitments to bring leadership and a spirit of mutual respect to an effort to work together towards a common vision, a workable plan, and long-term follow through, as an assurance to potential philanthropic contributors that investment in the conservation of the Port Gamble Forest will pay ecological, community and cultural dividends for generations to come.

Sincerely,

Campaign Co-Chairs:

Leonard Forsman- Suquamish Tribe Chairman

Robert Gelder- Kitsap County Commissioner

Ken Meidell- DaKine, CEO

Jeromy Sullivan- Port Gamble S'Klallam Tribe Chairman

Michelle Connor- Executive VP of Strategic Enterprises

Robert Jones- Robert L. Jones Architectural Design

Campaign Steering Committee:

Brian Kilpatrick- Evergreen Mountain Bike Alliance West Sound Chapter

Mark Schorn- North Kitsap Trails Association

Sandra Staples-Bortner- Great Peninsula Conservancy

Don Willott- Kitsap Audubon Society

Robert Gelder Sandra Staples-Bortner
Brian Kilpatrick Mark Schorn

Don Willott