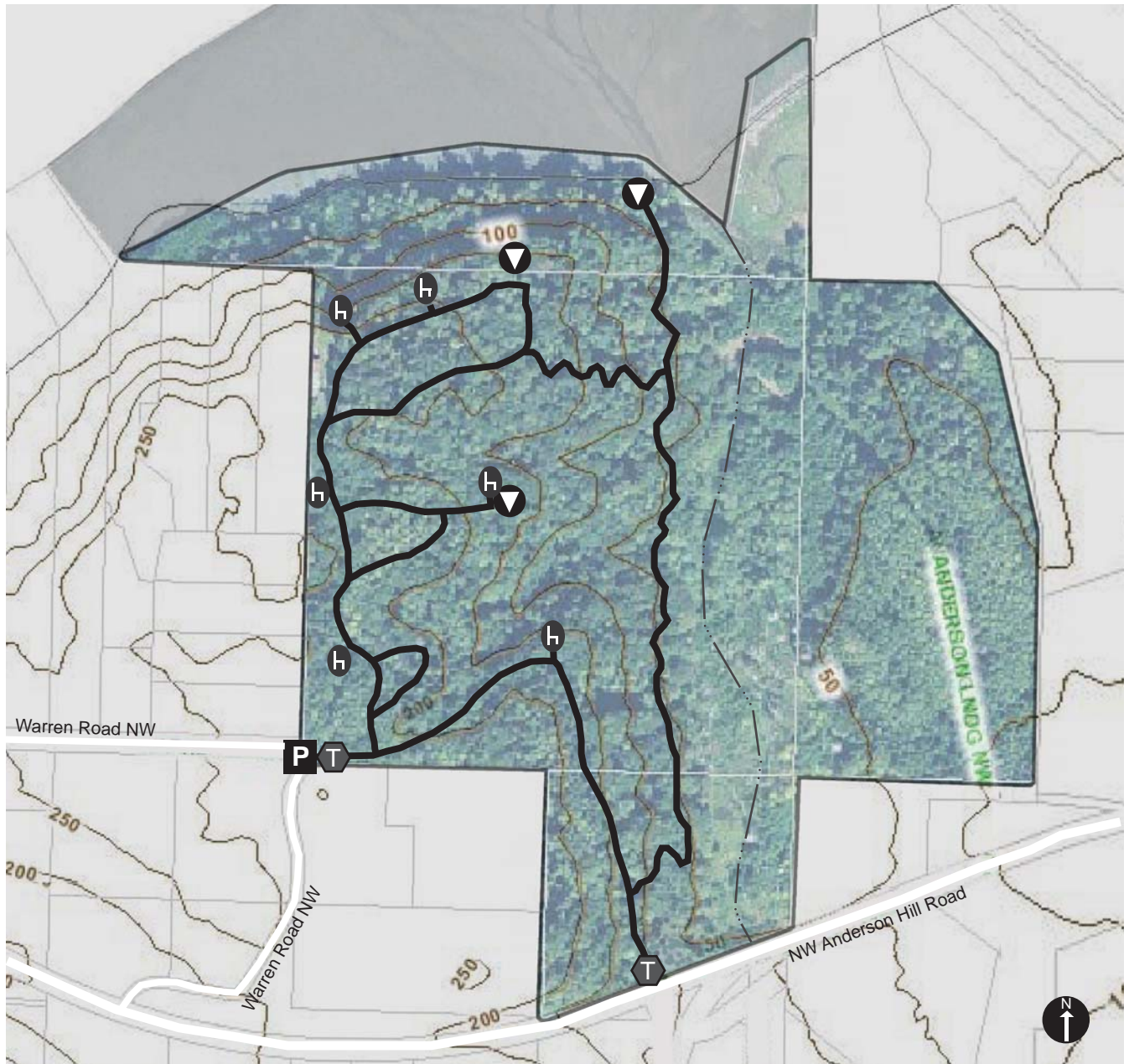


Kitsap County Parks ~ Anderson Landing

January 2009
© 2009 Kitsap County Parks



Kitsap County Parks and Recreation
360.337.5350 ph, 360.337.5385 fax
<http://www.kitsapgov.com/parks/>
614 Division Street, MS-1
Port Orchard, WA 98366



| | | | |
|-------------------------------|-------------------------|--------------------------------|---|
| Hiking Only | Creek | Parking Lot | Restroom |
| Hiking, Bicycling | Gate | Trailhead | Picnic Area |
| Hiking, Bicycling, Equestrian | Trail Distance in Miles | Scenic View / Viewing Platform | Other Public Lands |
| | | Seating | No Public Entry Private or Leased Lands |

Check for seasonal closures at www.kitsapgov.com/parks/ or 360-337-5350

Map based on volunteer input and represent approximate locations of points of interest