

# Reina Osburn



Reina Osburn first served as County Clerk in 1931 and was Chief Deputy Clerk to Arthur Lund in prior years before she was elected. There was a eight year term limit, so Lund left the Clerks Office and was elected to the Treasurers Office. Eight years later Osburn and Lund switched back offices and continued to crisscross office paths until the mid-fifties when they both retired. Both were well respected by their peers and the

public. Neither Lund nor Osburn, both Republicans, lost an election in those four decades, even during the FDR Democratic years.

Osburn's final eleven years as the clerk were after the two-term law was repealed. During World War II she worked side by side with all the clerks during a very high employee turnover rate. Osburn was the epitome of a public servant, with the emphasis on servant. She is quoted as saying: "If anyone asks for service, give them every bit of service you can, don't hold back!" She continued to work at the front counter until her last day in office. Lund and Osburn were friends to the end and both passed on at the age of 77 in the mid 1960's.





(Osburn center right side)



(Osburn back row, last lady on right side)

# Reina Osburn, 27 Years County Official, Dies

Mrs. Reina Osburn, for 19 years Kitsap County clerk and for eight years county treasurer, died at Harrison Memorial Hospital Sunday at the age of 77.

Arthur Lund, to whom she was deputy for eight years, said she



MRS. REINA OSBURN

was a hard worker, conscientious —“everything had to be just so.”

She and Lund switched offices twice because of a now-repealed law that no person could hold an office for more than two successive terms.

So after serving her two terms as clerk from 1931 to 1939, dur-

ing which time Lund was treasurer, she became treasurer—by election—for the next eight and Lund again was elected clerk. She then returned to the clerkship, in which she served 11 more years—almost three terms—before retiring in June of 1957.

“One of the first things she said to me when she came into the treasurer’s office was, ‘If anyone asks for service, give them every bit of service you can, and don’t hold back,’” recalled present County treasurer Mrs. Maxine Johnson, who was an employe in the treasurer’s office when Mrs. Osburn was elected to the job.

“She was a real fine treasurer. And she was serving during the difficult wartime years with the high turnover of help at the Courthouse,” said Mrs. Johnson.

“There are six of us here now who’ve worked for her,” Mrs. Johnson said, “and we’ve all stayed friends.”

“Her death leaves kind of a quietness here, even though we have been expecting it.”

Mrs. Osburn had begun her service to the County even before becoming deputy clerk in 1923. From 1908, with a few interruptions for marriage and a family, she served as deputy treasurer.

She was born Feb. 13, 1888, in Wareham, Mass., but was brought to Tacoma by her parents as an infant and to Port Orchard as a girl of 12.

She married C. S. Osburn there Aug. 18, 1910. She had one daughter, Mrs. Clayton (Etta) Dailey, now of Poulsbo, becoming eventually grandmother of three children and great-grandmother of three more.

Mr. Osburn died in 1954.

Since her retirement in 1957, Mrs. Osburn had done much travelling and also had continued her activity in the Republican Party.

The funeral will be at 2 p.m. Wednesday at the Pendleton-Gilchrist Funeral Home, Port Orchard, with the Rev. Jack McDaniel of Port Orchard Christian Church officiating.

Private interment will follow at Sunset Lane Cemetery.

# • Kitsap County Will Be Safe With These at the Helm •

## For County Sheriff

**AMOS D. CORLISS**



Amos D. Corliss is a man with many years experience as a peace officer, and has an enviable reputation among all peace officers of the state. He is known throughout this County as honest, trustworthy, fearless and reliable.

He promises to reduce the expense of operating the Sheriff's office \$2000 per year, without interfering with efficiency, in fact will increase the efficiency greatly and at the same time restore public confidence to his office.

He respectfully requests the support of all voters at the general election.

## For County Treasurer

**FRED C. WYCKOFF**



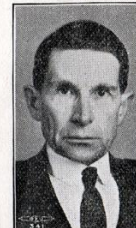
Fred C. Wyckoff, the present County Treasurer, is asking re-election on his record. His experience especially qualifies him to guard the county funds, by carefully watching the fluctuation of the market of securities, and insisting on ample protection for the county funds on deposit in the banks.

He is making a special effort to avoid payment of interest, by calling all warrants as soon as funds are available.

Courteous and ready service is maintained at all times.

## For County Superintendent of Schools

**D. H. WOLFLE**



I cannot do my regular work and make personal campaign calls. I believe you know me well enough to know of my special training for school work, my experience and service in all kinds of common schools. I have served constantly, faithfully and honestly. If I have earned your goodwill, may I count on your support at the general election, November 6?

As I have no other position, job, or supporting income, a word to your friends and neighbors will help me, and be greatly appreciated.

## For County Clerk

**REINA M. OSBURN**



The County Clerk is the clerk of our Superior Court and her records are of vital concern to every resident of Kitsap County.

The office of County Clerk is entirely self-supporting and for the past four years with Reina M. Osburn as Clerk has earned a substantial sum over and above the cost of operation.

The work in her office is highly specialized. It requires a knowledge of the law and legal procedure. Mrs. Osburn has that knowledge.

She is entitled to your support.

## For County Prosecuting Attorney

**MERRILL R. WALLACE**



Merrill R. Wallace, nominee of the Republican party for the office of Prosecuting Attorney of Kitsap County, is a lifelong resident of this county. He was born in Charleston and received his early education in the grade and high schools of Charleston and Bremerton. He attended the University of Washington and is a graduate with the degree of Bachelor of Arts. Since his graduation from the University he has been engaged in the practice of his profession in Bremerton.

He will enforce the laws.

## For County Commissioner—1st District

**JOHN CARLSON**



I have been a resident of Kitsap County for 23 years, actively engaged in farming. My taxes have been on an average \$300.00 per year.

I have always been willing to work and take part in community welfare and betterment.

I have had six years of experience as County Commissioner of this county, and I stand for common sense economy and 100% efficiency.

## For County Auditor

**JOHN F. ANDERSON**



John F. Anderson, Republican candidate for County Auditor, has lived in Kitsap County 48 years; paid taxes here since 1888. Is thoroughly familiar with county work, having served as County Auditor from 1921 to 1927 and as County Assessor from 1927 to the present time.

The duties of an Auditor's office are too technical to be trusted to an inexperienced person; confusion in books and records could cost thousands of dollars. Election of John F. Anderson will assure a continuation of a splendid service by a capable, trained staff.

## For County Assessor

**OSCAR A. SWORD**



Settled on a homestead at Seabeck in 1899. Appointed Deputy Assessor in 1903. Fire Warden in 1906. Appointed Law Enforcement Officer for State Forestry Department in 1927. The position of Deputy Assessor and Fire Warden being only part time jobs. Put in the remainder of my time clearing land.

While living at Seabeck was engaged in poultry raising.

I now live at Silverdale.

## For County Commissioner—2nd District

**R. E. BUCKLIN**



Native of Kitsap County, resident of Bainbridge Island. Served in connection with various departments of Kitsap County for 16 years before election as Commissioner in 1922. Commissioner six years.

Very few men in Kitsap County are as well acquainted with land titles and descriptions, matters of taxation and administration of relief measures, as well as administration of county roads.

Thoroughly trained, thoroughly qualified.

## For County Clerk

**REINA M. OSBURN**



The County Clerk is the clerk of our Superior Court and her records are of vital concern to every resident of Kitsap County.

The office of County Clerk is entirely self-supporting and for the past four years with Reina M. Osburn as Clerk has earned a substantial sum over and above the cost of operation.

The work in her office is highly specialized. It requires a knowledge of the law and legal procedure. Mrs. Osburn has that knowledge.

She is entitled to your support.