

# KITSAP COUNTY

## Washington

### Comprehensive Plan

#### Land Use Map

Effective May 7, 1998  
Amended December 8, 2003

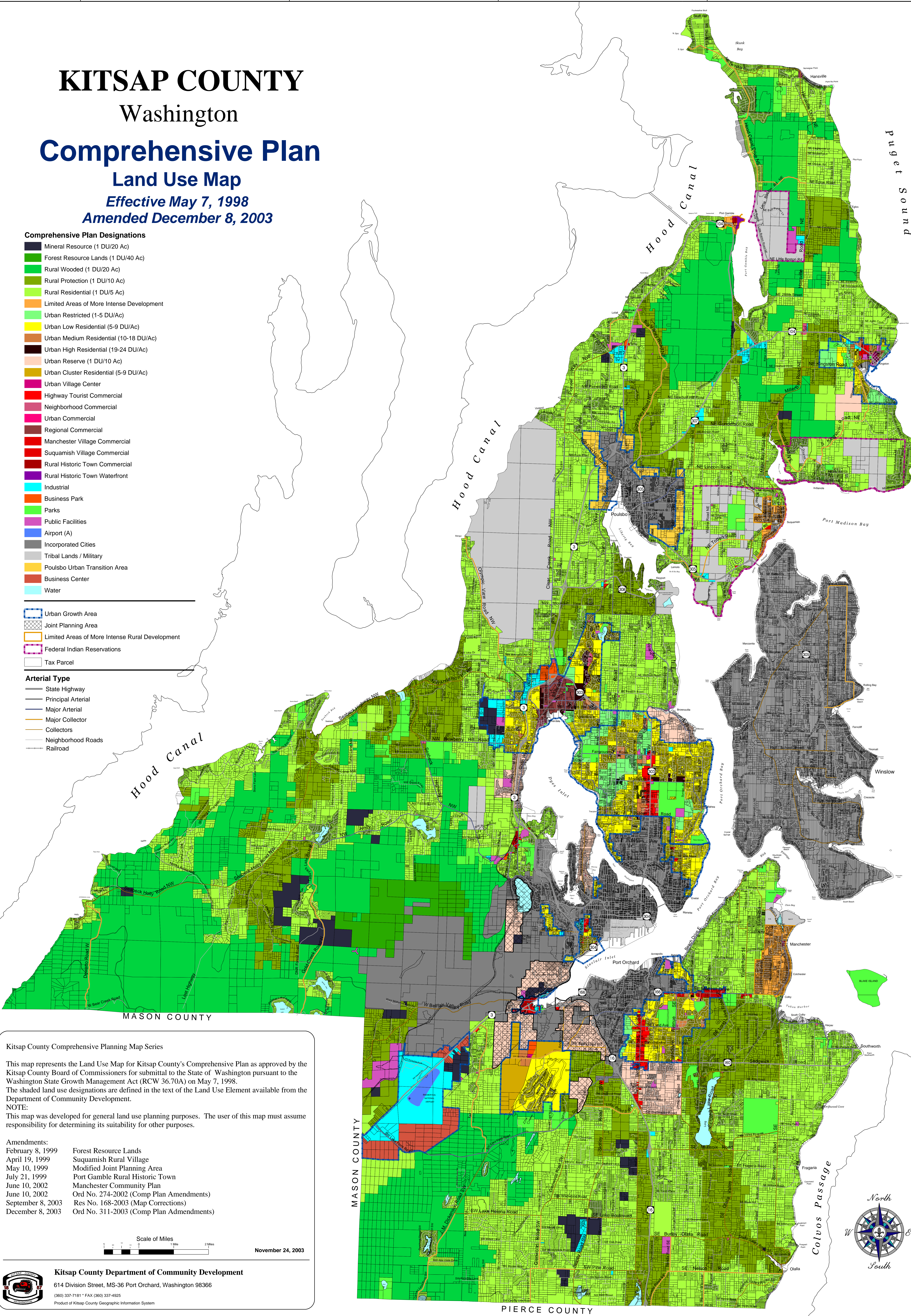
#### Comprehensive Plan Designations

- Mineral Resource (1 DU/20 Ac)
- Forest Resource Lands (1 DU/40 Ac)
- Rural Wooded (1 DU/20 Ac)
- Rural Protection (1 DU/10 Ac)
- Rural Residential (1 DU/5 Ac)
- Limited Areas of More Intense Development
- Urban Restricted (1-5 DU/Ac)
- Urban Low Residential (5-9 DU/Ac)
- Urban Medium Residential (10-18 DU/Ac)
- Urban High Residential (19-24 DU/Ac)
- Urban Reserve (1 DU/10 Ac)
- Urban Cluster Residential (5-9 DU/Ac)
- Urban Village Center
- Highway Tourist Commercial
- Neighborhood Commercial
- Urban Commercial
- Regional Commercial
- Manchester Village Commercial
- Suquamish Village Commercial
- Rural Historic Town Commercial
- Rural Historic Town Waterfront
- Industrial
- Business Park
- Parks
- Public Facilities
- Airport (A)
- Incorporated Cities
- Tribal Lands / Military
- Poulsbo Urban Transition Area
- Business Center
- Water

- Urban Growth Area
- Joint Planning Area
- Limited Areas of More Intense Rural Development
- Federal Indian Reservations
- Tax Parcel

#### Arterial Type

- State Highway
- Principal Arterial
- Major Arterial
- Major Collector
- Collectors
- Neighborhood Roads
- Railroad

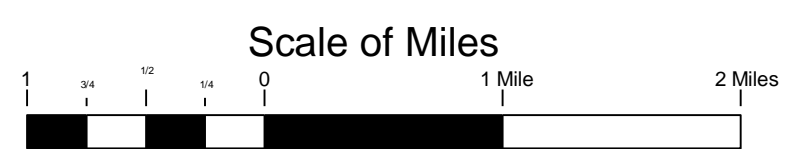


#### Kitsap County Comprehensive Planning Map Series

This map represents the Land Use Map for Kitsap County's Comprehensive Plan as approved by the Kitsap County Board of Commissioners for submittal to the State of Washington pursuant to the Washington State Growth Management Act (RCW 36.70A) on May 7, 1998. The shaded land use designations are defined in the text of the Land Use Element available from the Department of Community Development.

**NOTE:**  
This map was developed for general land use planning purposes. The user of this map must assume responsibility for determining its suitability for other purposes.

- |                   |   |
|-------------------|---|
| February 8, 1999  | Forest Resource Lands                   |
| April 19, 1999    | Suquamish Rural Village                 |
| May 10, 1999      | Modified Joint Planning Area            |
| July 21, 1999     | Port Gamble Rural Historic Town         |
| June 10, 2002     | Manchester Community Plan               |
| June 10, 2002     | Ord No. 274-2002 (Comp Plan Amendments) |
| September 8, 2003 | Res No. 168-2003 (Map Corrections)      |
| December 8, 2003  | Ord No. 311-2003 (Comp Plan Amendments) |



November 24, 2003



**Kitsap County Department of Community Development**

614 Division Street, MS-36 Port Orchard, Washington 98366

(360) 537-7181 • FAX (360) 537-4825

Product of Kitsap County Geographic Information System