

KITSAP COUNTY

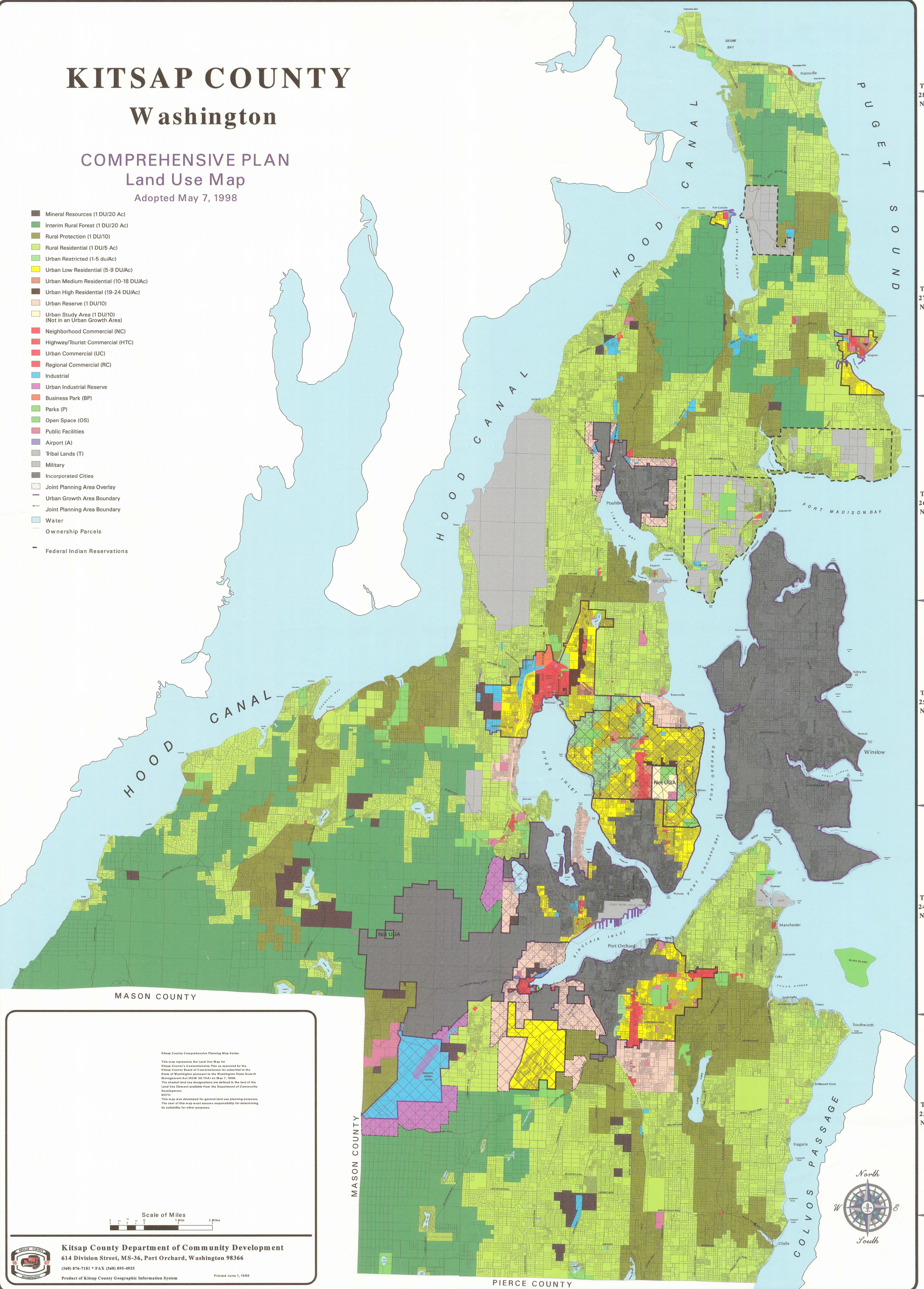
Washington

COMPREHENSIVE PLAN

Land Use Map

Adopted May 7, 1998

- Mineral Resources (1 DU/20 Ac)
- Interim Rural Forest (1 DU/20 Ac)
- Rural Protection (1 DU/10)
- Rural Residential (1 DU/5 Ac)
- Urban Restricted (1-5 du/Ac)
- Urban Low Residential (5-9 DU/Ac)
- Urban Medium Residential (10-18 DU/Ac)
- Urban High Residential (19-24 DU/Ac)
- Urban Reserve (1 DU/10)
- Urban Study Area (1 DU/10)
(Not in an Urban Growth Area)
- Neighborhood Commercial (NC)
- Highway/Tourist Commercial (HTC)
- Urban Commercial (UC)
- Regional Commercial (RC)
- Industrial
- Urban Industrial Reserve
- Business Park (BP)
- Parks (P)
- Open Space (OS)
- Public Facilities
- Airport (A)
- Tribal Lands (T)
- Military
- Incorporated Cities
- Joint Planning Area Overlay
- Urban Growth Area Boundary
- Joint Planning Area Boundary
- Water
- Ownership Parcels
- Federal Indian Reservations

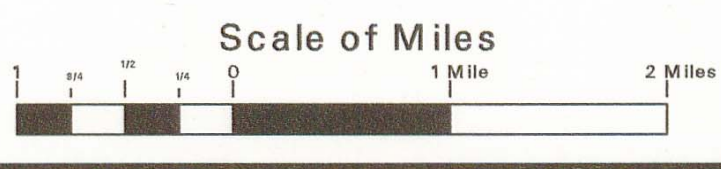


MASON COUNTY

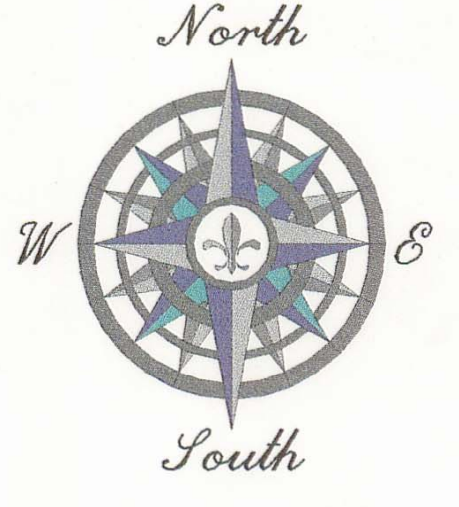
MASON COUNTY

PIERCE COUNTY

Kitsap County Comprehensive Planning Map Series
This map represents the Land Use Map for Kitsap County's Comprehensive Plan as approved by the Kitsap County Board of Commissioners for submission to the State of Washington pursuant to the Washington State Growth Management Act (RCW 36.70A) on May 7, 1998. The shaded land use designations are defined in the text of the Land Use Element available from the Department of Community Development.
NOTE: This map was developed for general land use planning purposes. The user of this map must assume responsibility for determining its suitability for other purposes.



Kitsap County Department of Community Development
614 Division Street, MS-36, Port Orchard, Washington 98366
(360) 876-7181 • FAX (360) 895-4925
Product of Kitsap County Geographic Information System Printed June 1, 1998



R2W

R1W

R1E

R2E

T 28 N
T 27 N
T 26 N
T 25 N
T 24 N
T 23 N

T 28 N
T 27 N
T 26 N
T 25 N
T 24 N
T 23 N