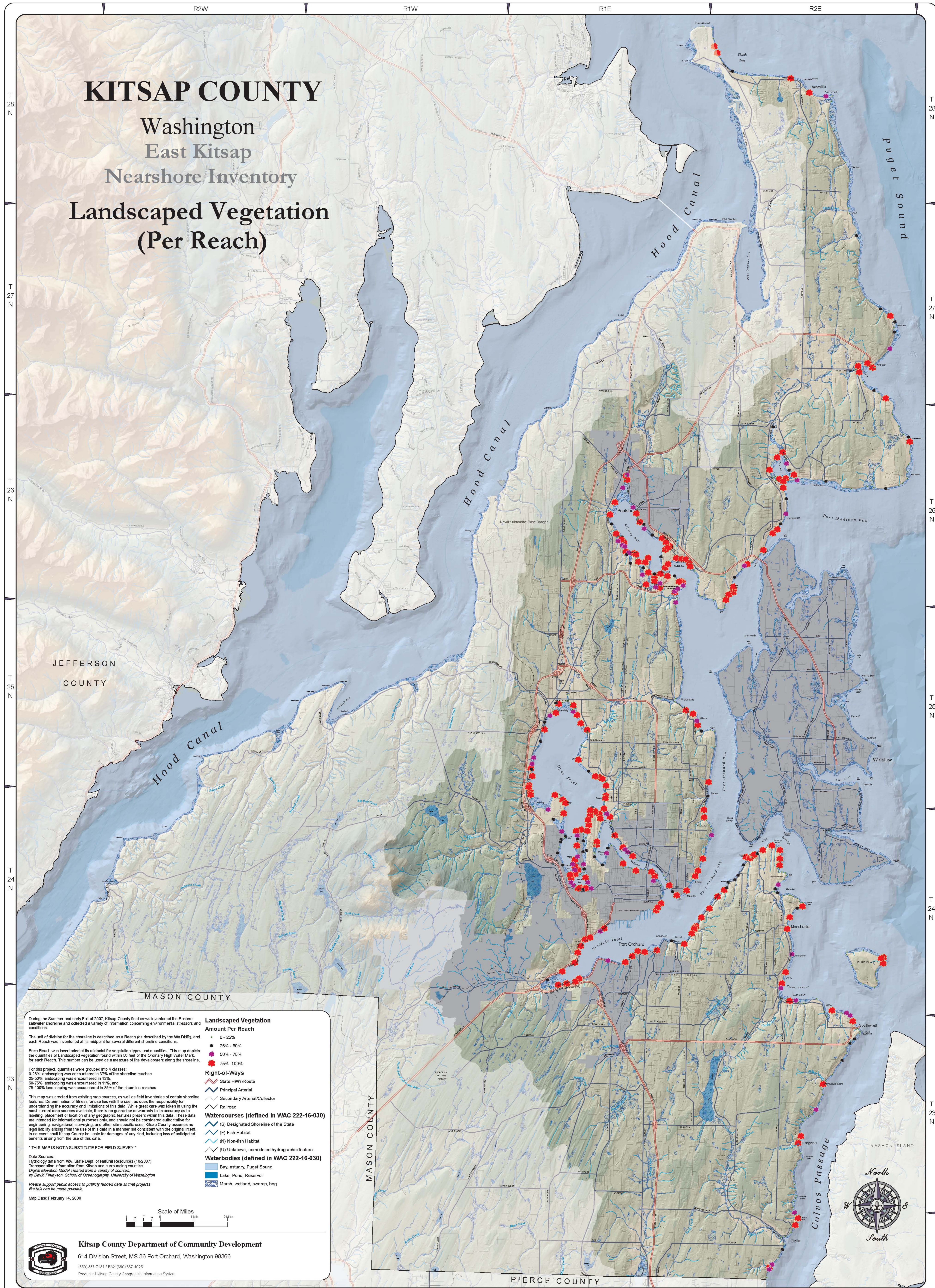


KITSAP COUNTY

Washington
East Kitsap
Nearshore Inventory

Landscaped Vegetation (Per Reach)



During the Summer and early Fall of 2007, Kitsap County field crews inventoried the Eastern saltwater shoreline and collected a variety of information concerning environmental stressors and conditions.

The unit of division for the shoreline is described as a Reach (as described by the WA DNR), and each Reach was inventoried at its midpoint for several different shoreline conditions.

Each Reach was inventoried at its midpoint for vegetation types and quantities. This map depicts the quantities of Landscaped vegetation found within 50 feet of the Ordinary High Water Mark, for each Reach. This number can be used as a measure of the development along the shoreline.

For this project, quantities were grouped into 4 classes:
0-25% landscaping was encountered in 31% of the shoreline reaches
25-50% landscaping was encountered in 12%
50-75% landscaping was encountered in 11%
75-100% landscaping was encountered in 38% of the shoreline reaches.

This map was created from existing map sources, as well as field inventories of certain shoreline features. Determination of fitness for use lies with the user, as does the responsibility for understanding the accuracy and limitations of this data. While great care was taken in using the most current map sources available, there is no guarantee or warranty to its accuracy as to labeling, placement or location of any geographic features present within this data. These data are intended for informational purposes only, and should not be considered authoritative for engineering, navigational, surveying, and other site-specific uses. Kitsap County assumes no legal liability arising from the use of this data in a manner not consistent with the original intent. In no event shall Kitsap County be liable for damages of any kind, including loss of anticipated benefits arising from the use of this data.

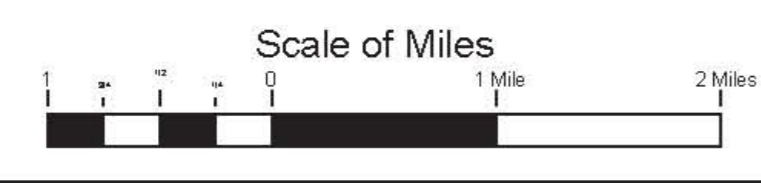
THIS MAP IS NOT A SUBSTITUTE FOR FIELD SURVEY

Data Sources:
Hydrology data from WA, State Dept. of Natural Resources (10/2007)
Topographic information from Kitsap and surrounding counties
Digital Elevation Model created from a variety of sources,
by David Finlayson, School of Oceanography, University of Washington

Please support public access to publicly funded data so that projects like this can be made possible.

Map Date: February 14, 2008

- Landscaped Vegetation Amount Per Reach**
 - 0 - 25%
 - 25% - 50%
 - 50% - 75%
 - 75% - 100%
- Right-of-Ways**
 - State HWY/Route
 - Principal Arterial
 - Secondary Arterial/Collector
 - Railroad
- Watercourses (defined in WAC 222-16-030)**
 - (S) Designated Shoreline of the State
 - (F) Fish Habitat
 - (N) Non-fish Habitat
 - (U) Unknown, unmodeled hydrographic feature.
- Waterbodies (defined in WAC 222-16-030)**
 - Bay, estuary, Puget Sound
 - Lake, Pond, Reservoir
 - Marsh, wetland, swamp, bog



Kitsap County Department of Community Development
614 Division Street, MS-36 Port Orchard, Washington 98366
(360) 337-7161 * FAX (360) 337-4925
Product of Kitsap County Geographic Information System

