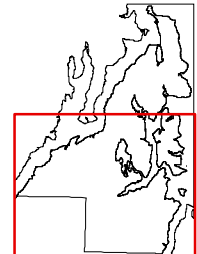
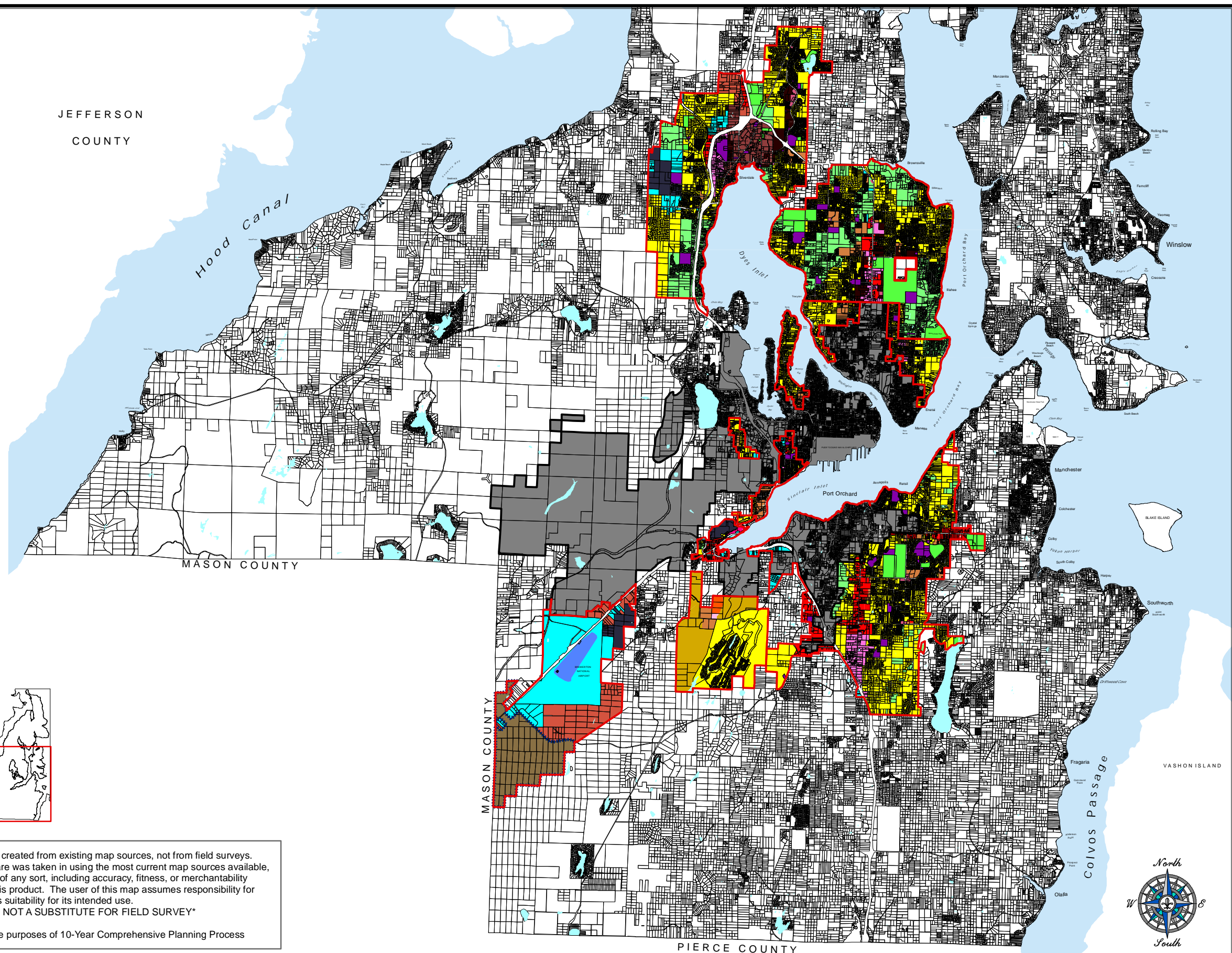


Southern Kitsap County

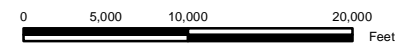
Preferred Alternative Comprehensive Plan Map FEIS

Comprehensive Plan Designation

- Mineral Resource (1 DU/20 Ac)
- Urban Restricted (1-5 DU/Ac)
- Urban Low Residential (4-9 DU/Ac)
- Urban Medium Residential (10-18 DU/Ac)
- Urban High Residential (19-30 DU/Ac)
- Urban Cluster Residential (4-9 DU/Ac)
- Urban Village Center (up to 18 DU/Ac)
- Mixed-Use (10-30 DU/Ac)
- Highway Tourist Commercial
- Neighborhood Commercial
- Urban Commercial
- Regional Commercial
- Industrial
- Industrial Multi-Purpose Recreational Area
- Business Park
- Parks/Open Space
- Public Facility
- Airport
- Incorporated City
- Tribal Land/Military
- Poulsbo Urban Transition Area
- Business Center
- Water
- Urban Growth Area Boundary



Map Date: November 27, 2006



This map was created from existing map sources, not from field surveys. While great care was taken in using the most current map sources available, no warranties of any sort, including accuracy, fitness, or merchantability accompany this product. The user of this map assumes responsibility for determining its suitability for its intended use.
THIS MAP IS NOT A SUBSTITUTE FOR FIELD SURVEY
 Created for the purposes of 10-Year Comprehensive Planning Process



Figure 2.6-2. FEIS Comprehensive Plan Map - Preferred Alternative South