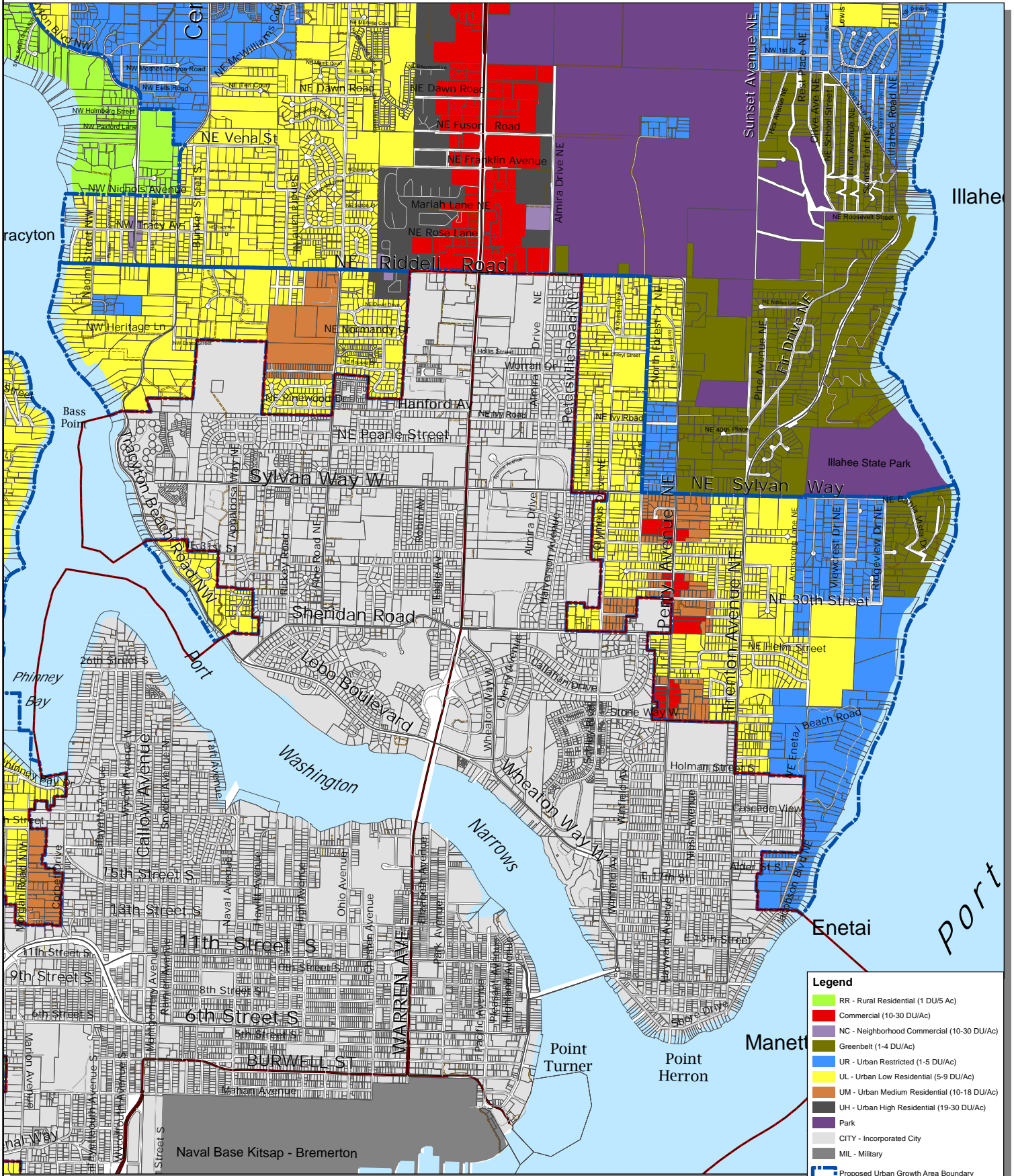


# Bremerton East Urban Growth Area

DRAFT



**Legend**

- RR - Rural Residential (1 DU/5 Ac)
- Commercial (10-30 DU/Ac)
- NC - Neighborhood Commercial (10-30 DU/Ac)
- Greenbelt (1-4 DU/Ac)
- UR - Urban Restricted (1-5 DU/Ac)
- UL - Urban Low Residential (5-9 DU/Ac)
- UM - Urban Medium Residential (10-18 DU/Ac)
- UH - Urban High Residential (19-30 DU/Ac)
- Park
- CITY - Incorporated City
- MIL - Military
- Proposed Urban Growth Area Boundary
- Incorporated City Boundary
- State Highway
- Collector / Arterial
- Local Access; Local Road
- Easement
- Greater Puget Sound hydrology

This map was created from existing map sources, not from field surveys. Determination of fitness for use lies with the user, as does the responsibility for understanding the accuracy and limitations of this map and data.

The information on this map may have been collected from various sources and can change over time without notice.

While great care was taken in making this map, there is no guarantee or warranty of its accuracy as to labeling, placement or location of any geographic features present. This map is intended for informational purposes only and is not a substitute for a field survey.

Kitsap County and its officials and employees assume no responsibility or legal liability for the accuracy, completeness, reliability, or timeliness of any information on this map.

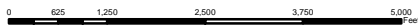
Ord No 812-2022 Comprehensive Plan Amendment  
Map Published Date: April 26, 2023

## Zoning - Alternative 1

FINAL DRAFT

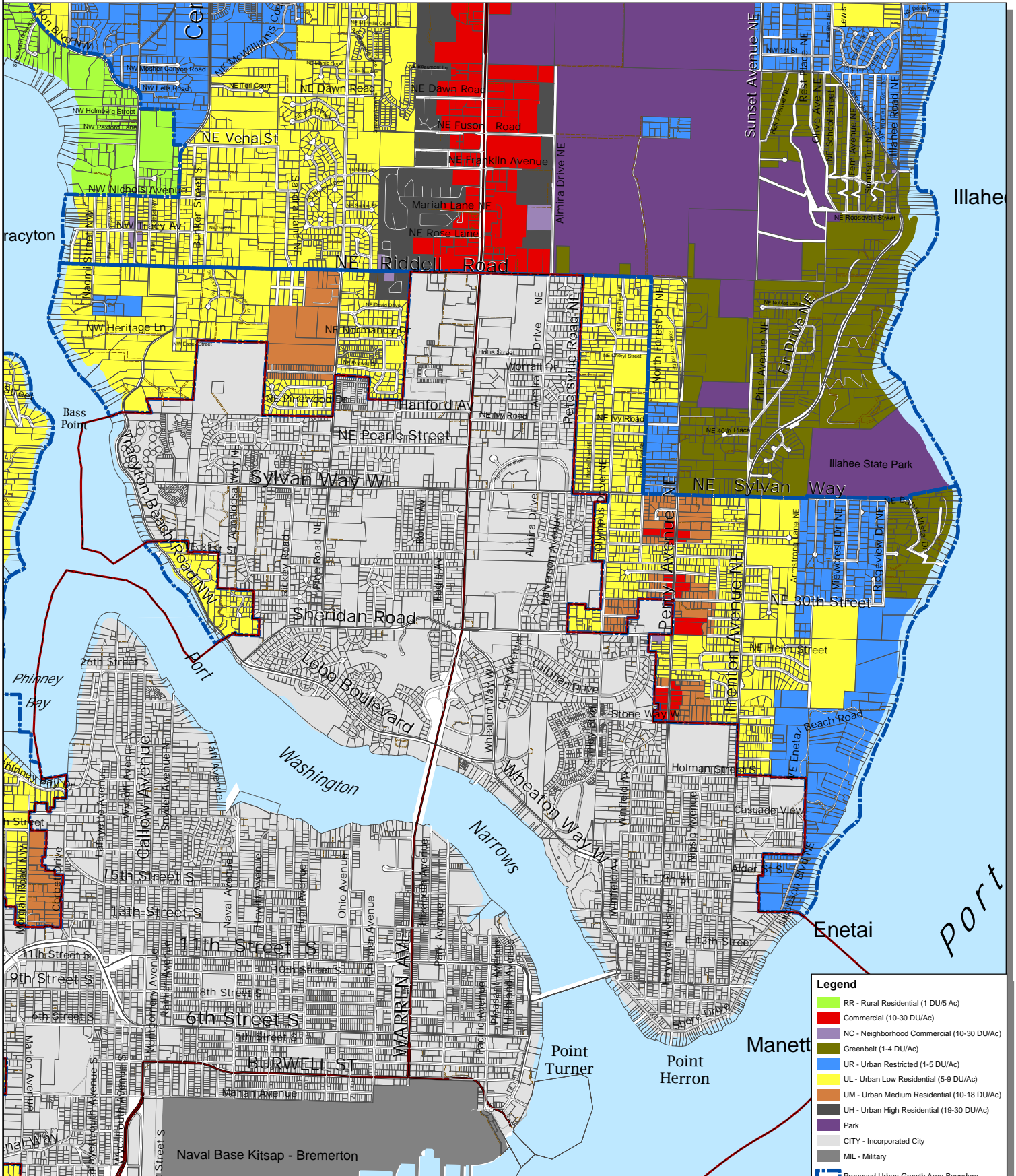


Kitsap County Department of Community Development  
614 Division Street, MS-36, Port Orchard, Washington 98366  
VOICE (360) 337-5777 (Kitsap One) \* <https://www.kitsapgov.com/>



# Bremerton East Urban Growth Area

DRAFT



**Legend**

- RR - Rural Residential (1 DU/5 Ac)
- Commercial (10-30 DU/Ac)
- NC - Neighborhood Commercial (10-30 DU/Ac)
- Greenbelt (1-4 DU/Ac)
- UR - Urban Restricted (1-5 DU/Ac)
- UL - Urban Low Residential (5-9 DU/Ac)
- UM - Urban Medium Residential (10-18 DU/Ac)
- UH - Urban High Residential (19-30 DU/Ac)
- Park
- CITY - Incorporated City
- MIL - Military
- Proposed Urban Growth Area Boundary
- Incorporated City Boundary
- State Highway
- Collector / Arterial
- Local Access; Local Road
- Easement
- Greater Puget Sound hydrology

This map was created from existing map sources, not from field surveys. Determination of fitness for use lies with the user, as does the responsibility for understanding the accuracy and limitations of this map and data.

The information on this map may have been collected from various sources and can change over time without notice.

While great care was taken in making this map, there is no guarantee or warranty of its accuracy as to labeling, placement or location of any geographic features present. This map is intended for informational purposes only and is not a substitute for a field survey.

Kitsap County and its officials and employees assume no responsibility or legal liability for the accuracy, completeness, reliability, or timeliness of any information on this map.

Ord No 812-2022 Comprehensive Plan Amendment  
Map Published Date: April 26, 2023

## Zoning - Alternative 2

FINAL DRAFT

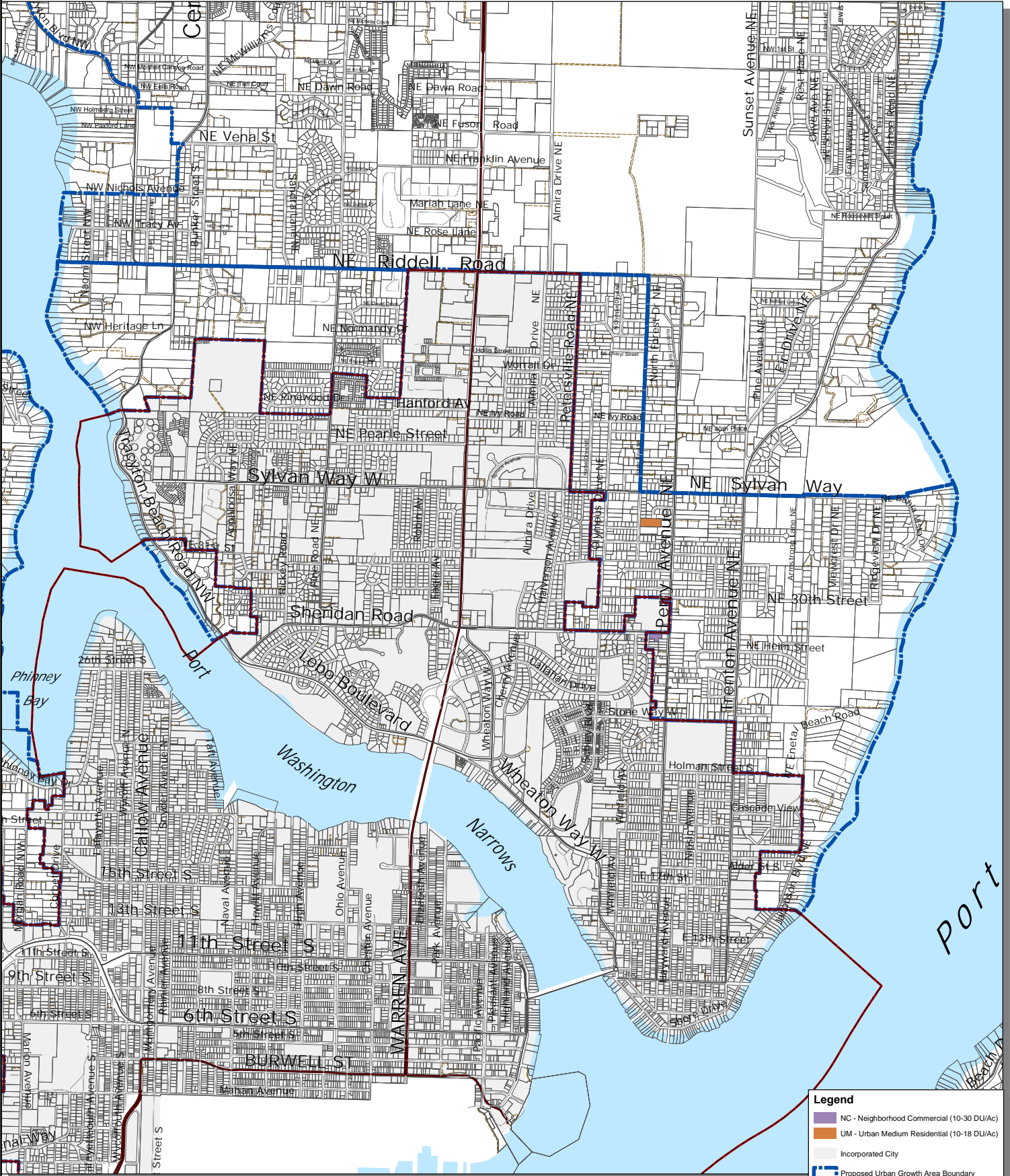


Kitsap County Department of Community Development  
614 Division Street, MS-36, Port Orchard, Washington 98366  
VOICE (360) 337-5777 (Kitsap One) \* <https://www.kitsapgov.com/>



# Bremerton East Urban Growth Area

DRAFT



**Legend**

- NC - Neighborhood Commercial (10-30 DU/Ac)
- UM - Urban Medium Residential (10-18 DU/Ac)
- Incorporated City
- Proposed Urban Growth Area Boundary
- Incorporated City Boundary
- State Highway
- Collector / Arterial
- Local Access; Local Road
- Easement
- Greater Puget Sound hydrology

This map was created from existing map sources, not from field surveys. Determination of fitness for use lies with the user, as does the responsibility for understanding the accuracy and limitations of this map and data.

The information on this map may have been collected from various sources and can change over time without notice.

While great care was taken in making this map, there is no guarantee or warranty of its accuracy as to labeling, placement or location of any geographic features present. This map is intended for informational purposes only and is not a substitute for a field survey.

Kitsap County and its officials and employees assume no responsibility or legal liability for the accuracy, completeness, reliability or timeliness of any information on this map.

Ord No 812-2022 Comprehensive Plan Amendment  
Map Published Date: April 26, 2023

## Zoning Changes - Alternative 2

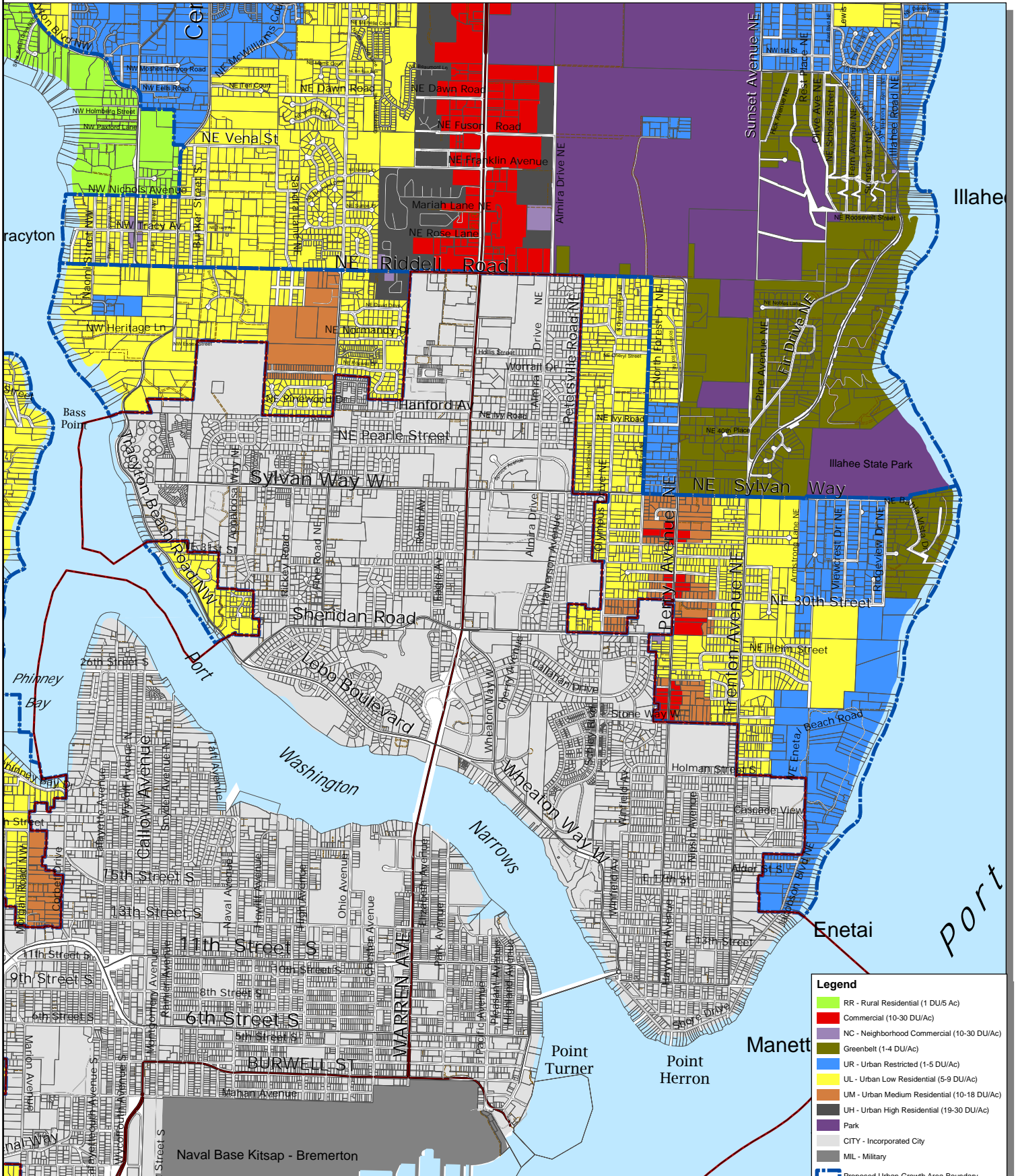
FINAL DRAFT



Kitsap County Department of Community Development  
614 Division Street, MS-36, Port Orchard, Washington 98366  
VOICE (360) 337-5777 (Kitsap One) \* <https://www.kitsapgov.com/>

# Bremerton East Urban Growth Area

DRAFT



**Legend**

- RR - Rural Residential (1 DU/5 Ac)
- Commercial (10-30 DU/Ac)
- NC - Neighborhood Commercial (10-30 DU/Ac)
- Greenbelt (1-4 DU/Ac)
- UR - Urban Restricted (1-5 DU/Ac)
- UL - Urban Low Residential (5-9 DU/Ac)
- UM - Urban Medium Residential (10-18 DU/Ac)
- UH - Urban High Residential (19-30 DU/Ac)
- Park
- CITY - Incorporated City
- MIL - Military
- Proposed Urban Growth Area Boundary
- Incorporated City Boundary
- State Highway
- Collector / Arterial
- Local Access; Local Road
- Easement
- Greater Puget Sound hydrology

This map was created from existing map sources, not from field surveys. Determination of fitness for use lies with the user, as does the responsibility for understanding the accuracy and limitations of this map and data.

The information on this map may have been collected from various sources and can change over time without notice.

While great care was taken in making this map, there is no guarantee or warranty of its accuracy as to labeling, placement or location of any geographic features present. This map is intended for informational purposes only and is not a substitute for a field survey.

Kitsap County and its officials and employees assume no responsibility or legal liability for the accuracy, completeness, reliability, or timeliness of any information on this map.

Ord No 812-2022 Comprehensive Plan Amendment  
Map Published Date: April 26, 2023

## Zoning - Alternative 3

FINAL DRAFT

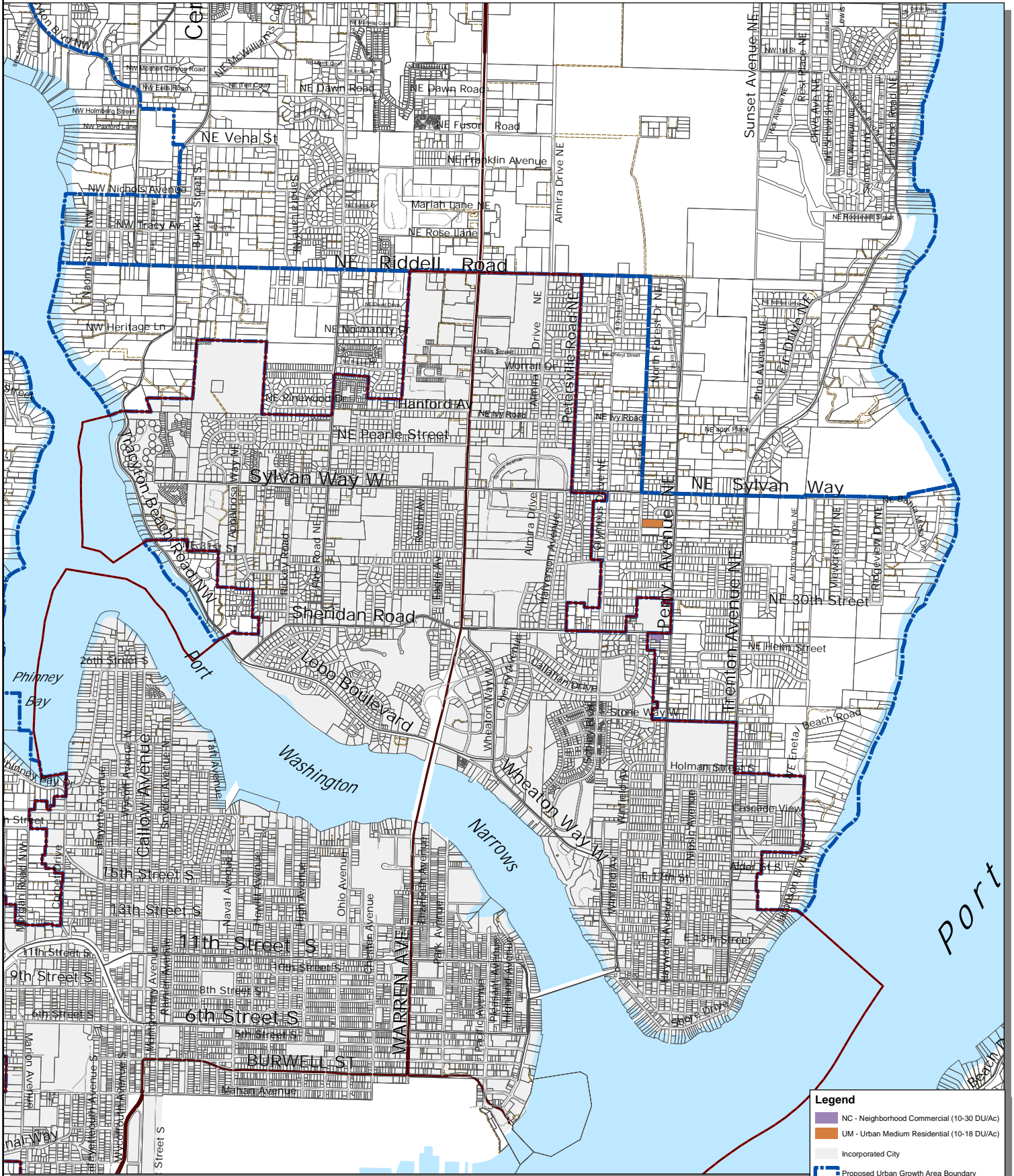


Kitsap County Department of Community Development  
614 Division Street, MS-36, Port Orchard, Washington 98366  
VOICE (360) 337-5777 (Kitsap One) \* <https://www.kitsapgov.com/>



# Bremerton East Urban Growth Area

DRAFT



**Legend**

- NC - Neighborhood Commercial (10-30 DU/Ac)
- UM - Urban Medium Residential (10-18 DU/Ac)
- Incorporated City
- Proposed Urban Growth Area Boundary
- Incorporated City Boundary
- State Highway
- Collector / Arterial
- Local Access; Local Road
- Easement
- Greater Puget Sound hydrology

## Zoning Changes - Alternative 3

FINAL DRAFT



Kitsap County Department of Community Development  
 614 Division Street, MS-36, Port Orchard, Washington 98366  
 VOICE (360) 337-5777 (Kitsap One) \* <https://www.kitsapgov.com/>

This map was created from existing map sources, not from field surveys. Determination of fitness for use lies with the user, as does the responsibility for understanding the accuracy and limitations of this map and data.

The information on this map may have been collected from various sources and can change over time without notice.

While great care was taken in making this map, there is no guarantee or warranty of its accuracy as to labeling, placement or location of any geographic features present. This map is intended for informational purposes only and is not a substitute for a field survey.

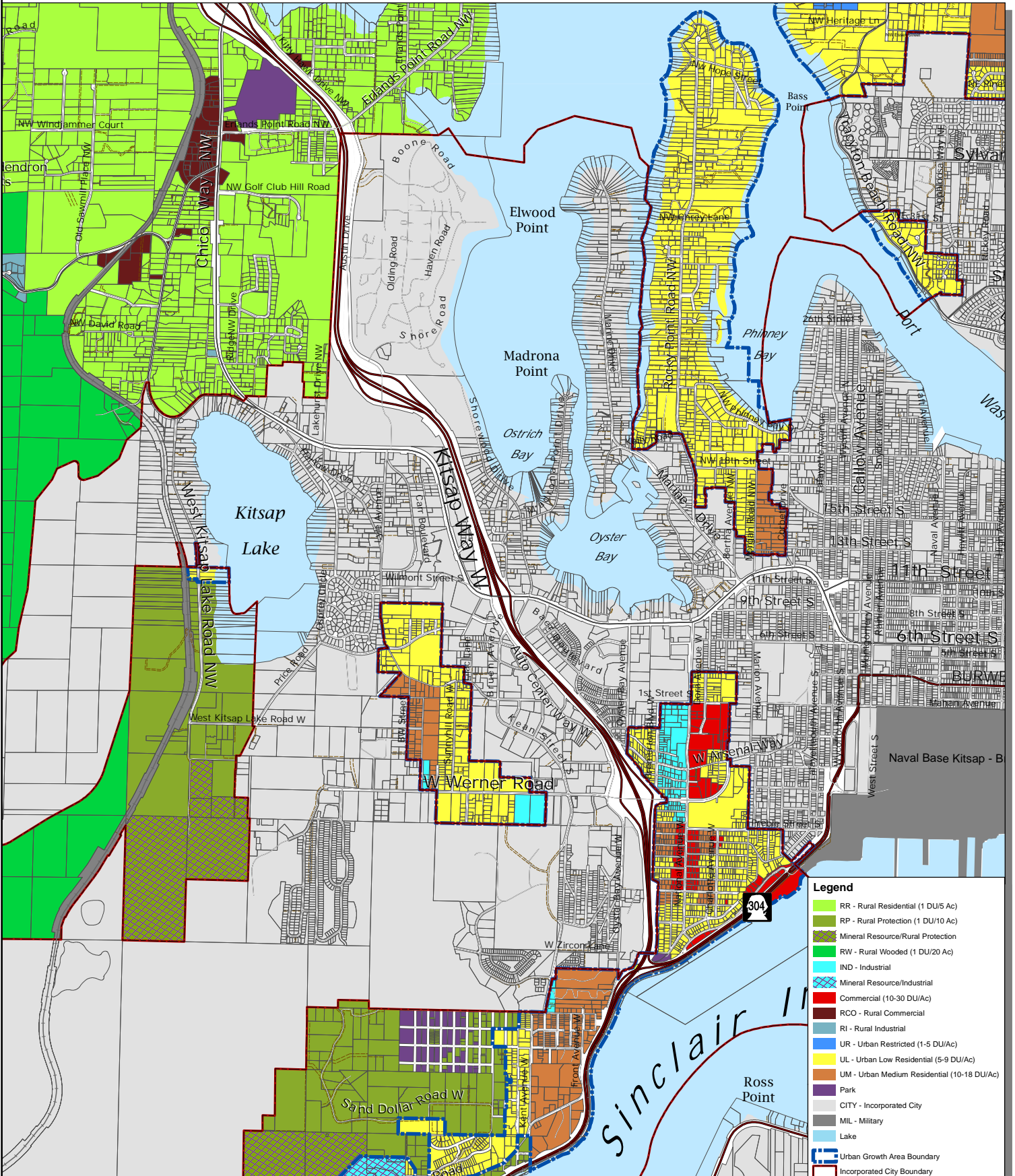
Kitsap County and its officials and employees assume no responsibility or legal liability for the accuracy, completeness, reliability or timeliness of any information on this map.

Ord No 812-2022 Comprehensive Plan Amendment  
 Map Published Date: April 26, 2023

0 625 1,250 2,500 3,750 5,000 Feet

# Bremerton West Urban Growth Area

DRAFT



## Zoning - Alternative 1

FINAL DRAFT



Kitsap County Department of Community Development  
 614 Division Street, MS-36, Port Orchard, Washington 98366  
 VOICE (360) 337-5777 (Kitsap One) \* <https://www.kitsapgov.com/>

This map was created from existing map sources, not from field surveys. Determination of fitness for use lies with the user, as does the responsibility for understanding the accuracy and limitations of this map and data.

The information on this map may have been collected from various sources and can change over time without notice. While great care was taken in making this map, there is no guarantee or warranty of its accuracy as to labeling, placement or location of any geographic features present. This map is intended for informational purposes only and is not a substitute for a field survey.

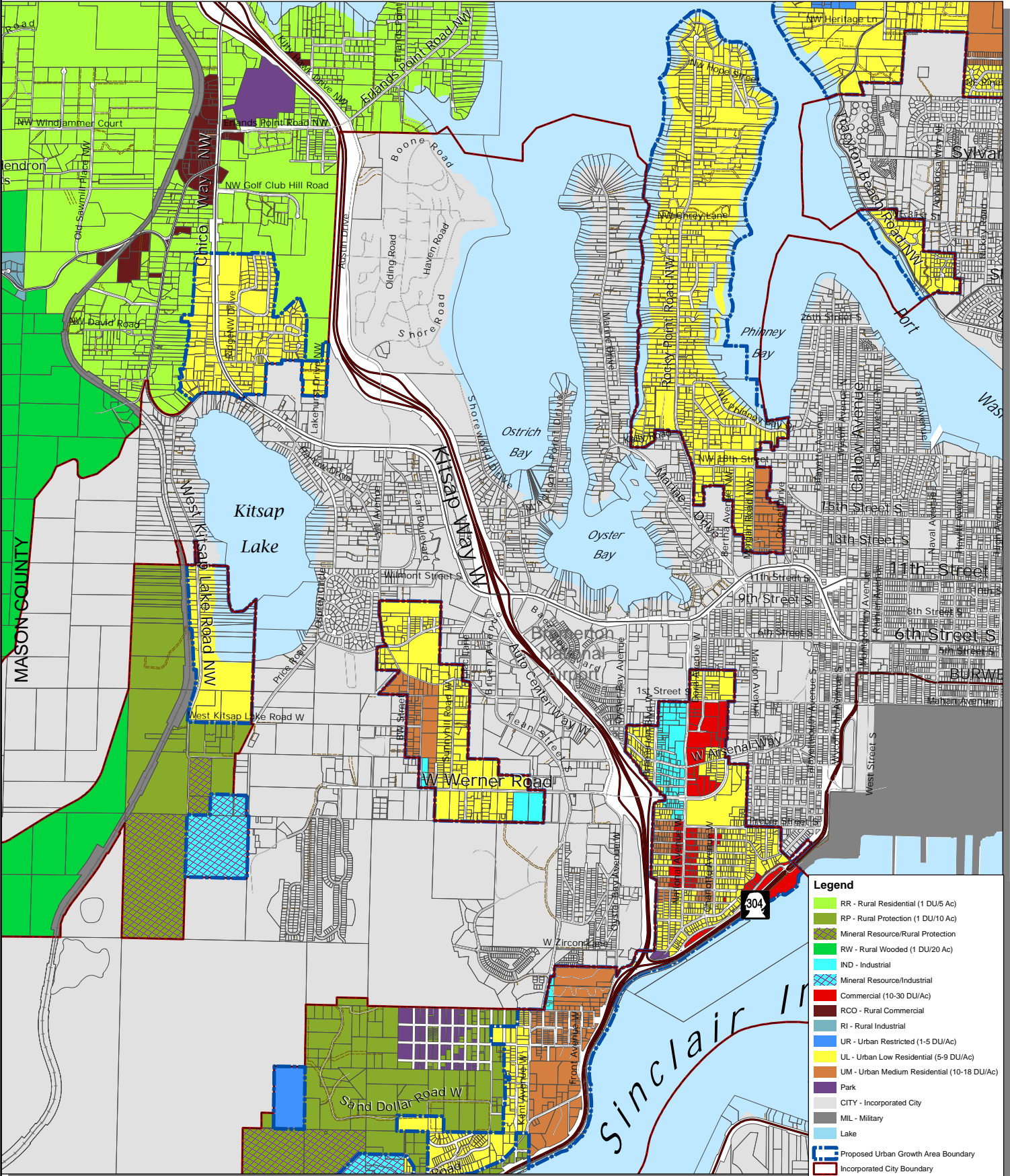
Kitsap County and its officials and employees assume no responsibility or legal liability for the accuracy, completeness, reliability, or timeliness of any information on this map.

Ord No 81-2-2022 Comprehensive Plan Amendment  
 Map Published Date: April 26, 2023



# Bremerton West Urban Growth Area

DRAFT



**Legend**

- RR - Rural Residential (1 DU/5 Ac)
- RP - Rural Protection (1 DU/10 Ac)
- Mineral Resource/Rural Protection
- RW - Rural Wooded (1 DU/20 Ac)
- IND - Industrial
- Mineral Resource/Industrial
- Commercial (10-30 DU/Ac)
- RCO - Rural Commercial
- RI - Rural Industrial
- UR - Urban Restricted (1-5 DU/Ac)
- UL - Urban Low Residential (5-9 DU/Ac)
- UM - Urban Medium Residential (10-18 DU/Ac)
- Park
- CITY - Incorporated City
- MIL - Military
- Lake
- Proposed Urban Growth Area Boundary
- Incorporated City Boundary
- State Highway
- Collector / Arterial
- Local Access; Local Road
- Easement
- Railroad Lines
- Greater Puget Sound hydrology

## Zoning - Alternative 2

FINAL DRAFT



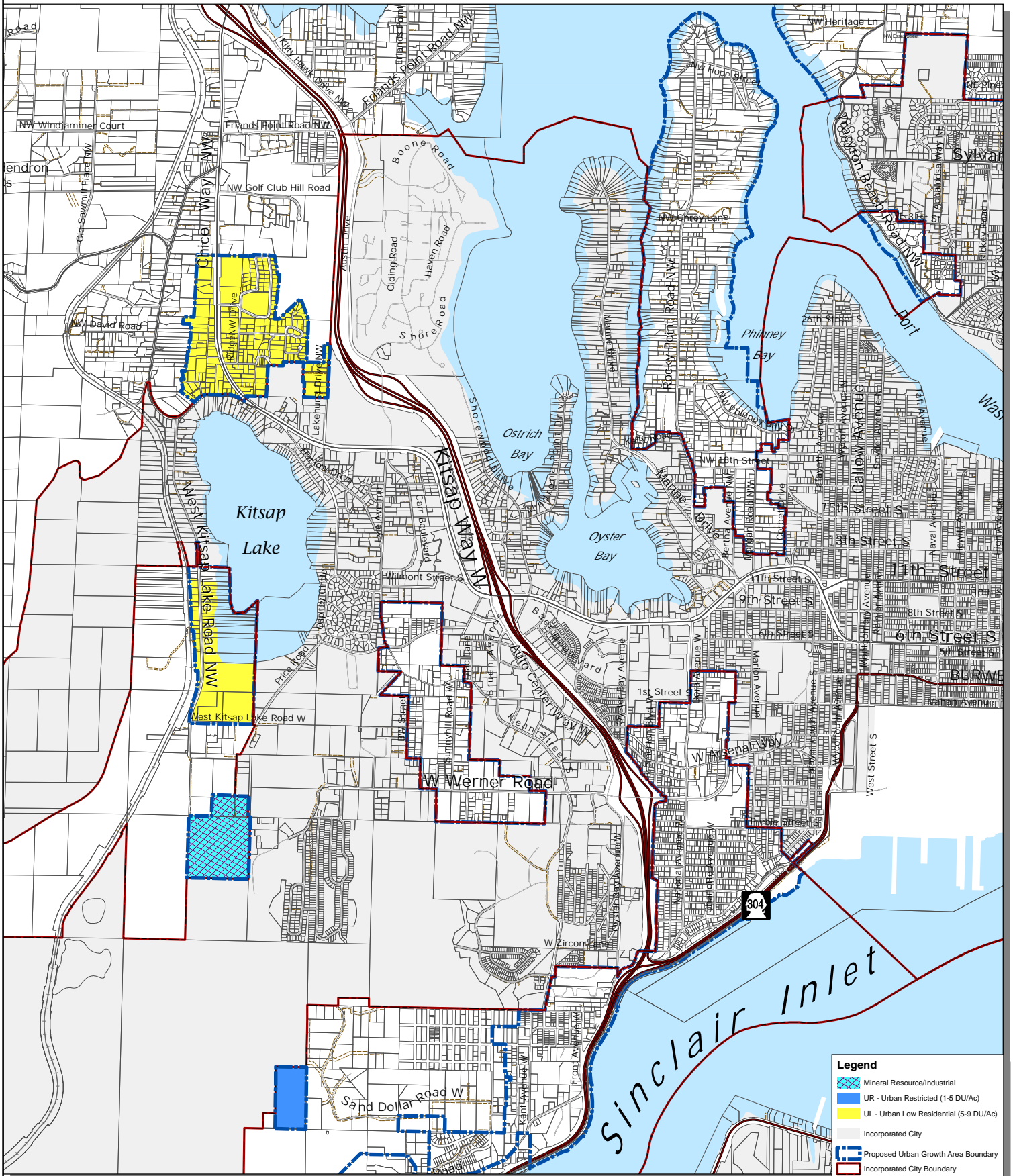
Kitsap County Department of Community Development  
 614 Division Street, MS-36, Port Orchard, Washington 98366  
 VOICE (360) 337-5777 (Kitsap One) \* <https://www.kitsapgov.com/>

This map was created from existing map sources, not from field surveys. Determination of fitness for use lies with the user, as does the responsibility for understanding the accuracy and limitations of this map and data.  
 The information on this map may have been collected from various sources and can change over time without notice.  
 While great care was taken in making this map, there is no guarantee or warranty of its accuracy as to labeling, placement or location of any geographic features present. This map is intended for informational purposes only and is not a substitute for a field survey.  
 Kitsap County and its officials and employees assume no responsibility or legal liability for the accuracy, completeness, reliability, or timeliness of any information on this map.  
 Ord No 812-2022 Comprehensive Plan Amendment  
 Map Published Date: April 26, 2023



# Bremerton West Urban Growth Area

DRAFT



**Legend**

- Mineral Resource/Industrial
- UR - Urban Restricted (1-5 DU/Ac)
- UL - Urban Low Residential (5-9 DU/Ac)
- Incorporated City
- Proposed Urban Growth Area Boundary
- Incorporated City Boundary
- State Highway
- Collector / Arterial
- Local Access; Local Road
- Easement
- Railroad Lines
- Greater Puget Sound hydrology

## Zoning Changes - Alternative 2

FINAL DRAFT



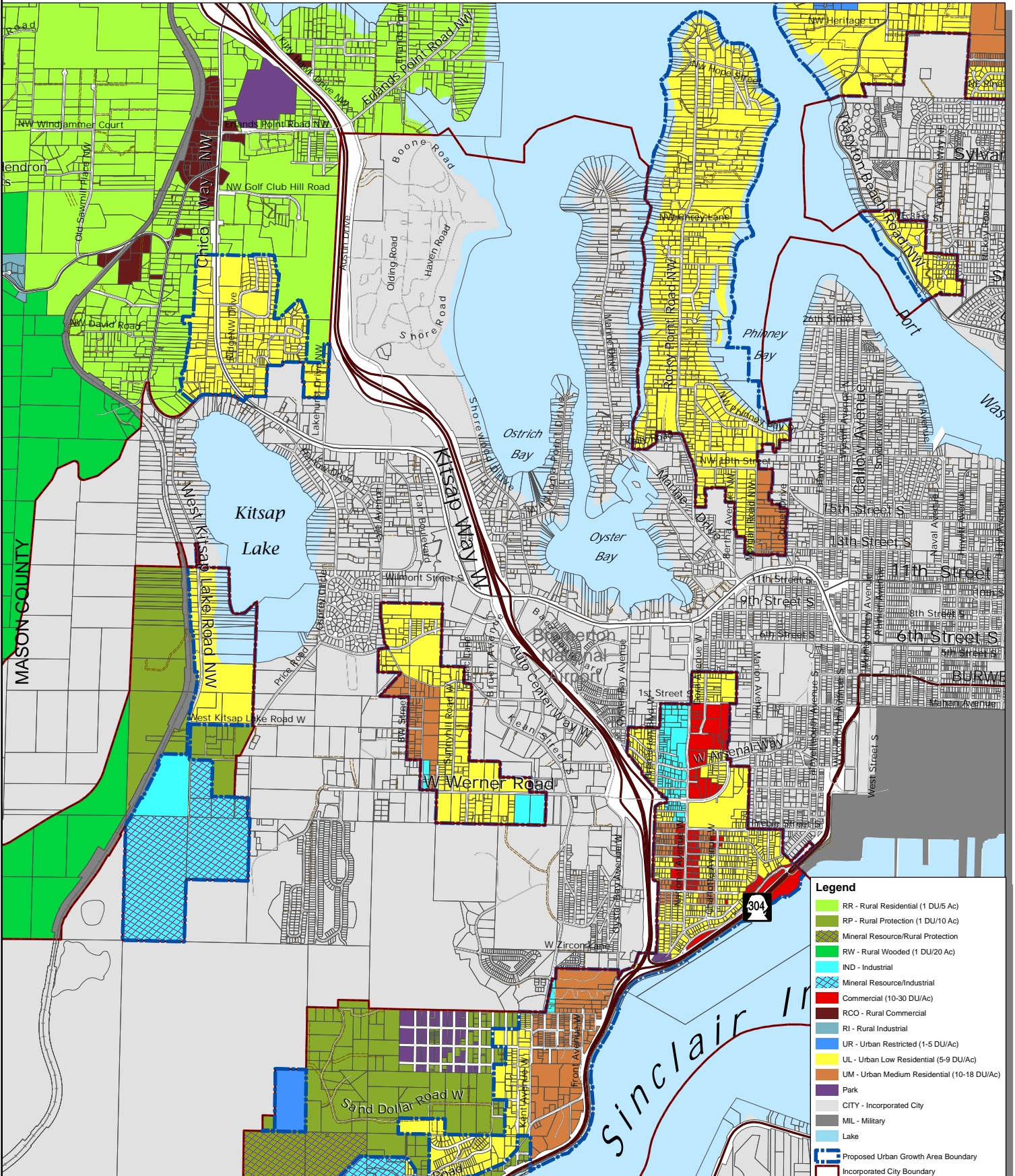
Kitsap County Department of Community Development  
 614 Division Street, MS-36, Port Orchard, Washington 98366  
 VOICE (360) 337-5777 (Kitsap One) \* <https://www.kitsapgov.com/>

This map was created from existing map sources, not from field surveys. Determination of fitness for use lies with the user, as does the responsibility for understanding the accuracy and limitations of this map and data.  
 The information on this map may have been collected from various sources and can change over time without notice.  
 While great care was taken in making this map, there is no guarantee or warranty of its accuracy as to labeling, placement or location of any geographic features present. This map is intended for informational purposes only and is not a substitute for a field survey.  
 Kitsap County and its officials and employees assume no responsibility or legal liability for the accuracy, completeness, reliability or timeliness of any information on this map.  
 Ord No 812-2022 Comprehensive Plan Amendment  
 Map Published Date: April 26, 2023



# Bremerton West Urban Growth Area

DRAFT



**Legend**

- RR - Rural Residential (1 DU/5 Ac)
- RP - Rural Protection (1 DU/10 Ac)
- Mineral Resource/Rural Protection
- RW - Rural Wooded (1 DU/20 Ac)
- IND - Industrial
- Mineral Resource/Industrial
- Commercial (10-30 DU/Ac)
- RCO - Rural Commercial
- RI - Rural Industrial
- UR - Urban Restricted (1-5 DU/Ac)
- UL - Urban Low Residential (5-9 DU/Ac)
- UM - Urban Medium Residential (10-18 DU/Ac)
- Park
- CITY - Incorporated City
- MIL - Military
- Lake
- Proposed Urban Growth Area Boundary
- Incorporated City Boundary
- State Highway
- Collector / Arterial
- Local Access; Local Road
- Easement
- Railroad Lines
- Greater Puget Sound hydrology

This map was created from existing map sources, not from field surveys. Determination of fitness for use lies with the user, as does the responsibility for understanding the accuracy and limitations of this map and data.

The information on this map may have been collected from various sources and can change over time without notice.

While great care was taken in making this map, there is no guarantee or warranty of its accuracy as to labeling, placement or location of any geographic features present. This map is intended for informational purposes only and is not a substitute for a field survey.

Kitsap County and its officials and employees assume no responsibility or legal liability for the accuracy, completeness, reliability, or timeliness of any information on this map.

Ord No 812-2022 Comprehensive Plan Amendment  
Map Published Date: April 26, 2023



## Zoning - Alternative 3

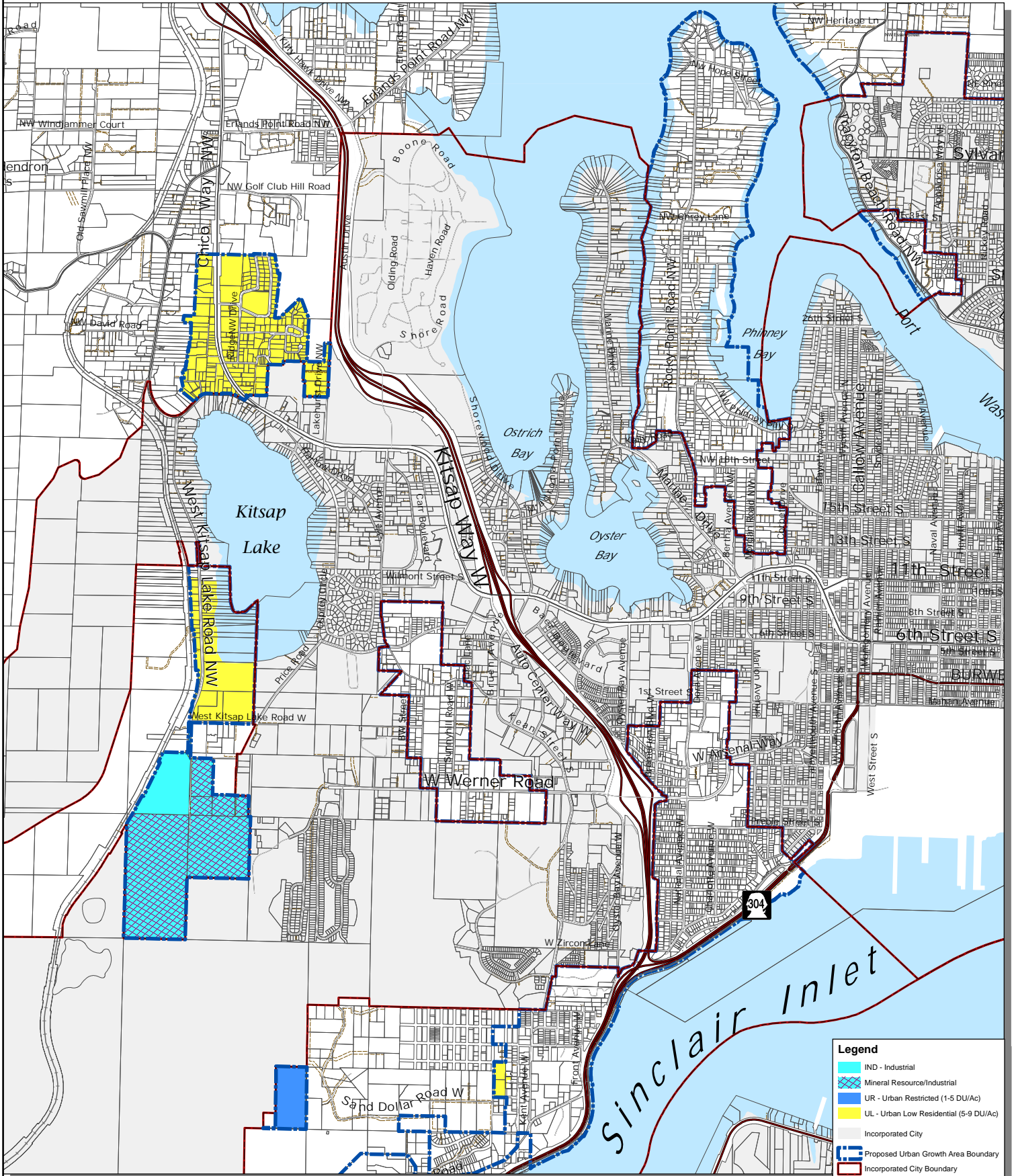
FINAL DRAFT



Kitsap County Department of Community Development  
614 Division Street, MS-36, Port Orchard, Washington 98366  
VOICE (360) 337-5777 (Kitsap One) \* <https://www.kitsapgov.com/>

# Bremerton West Urban Growth Area

DRAFT



This map was created from existing map sources, not from field surveys. Determination of fitness for use lies with the user, as does the responsibility for understanding the accuracy and limitations of this map and data.

The information on this map may have been collected from various sources and can change over time without notice.

While great care was taken in making this map, there is no guarantee or warranty of its accuracy as to labeling, placement or location of any geographic features present. This map is intended for informational purposes only and is not a substitute for a field survey.

Kitsap County and its officials and employees assume no responsibility or legal liability for the accuracy, completeness, reliability or timeliness of any information on this map.

Ord No 812-2022 Comprehensive Plan Amendment

Map Published Date: April 26, 2023

## Zoning Changes - Alternative 3

FINAL DRAFT



Kitsap County Department of Community Development  
 614 Division Street, MS-36, Port Orchard, Washington 98366  
 VOICE (360) 337-5777 (Kitsap One) \* <https://www.kitsapgov.com/>

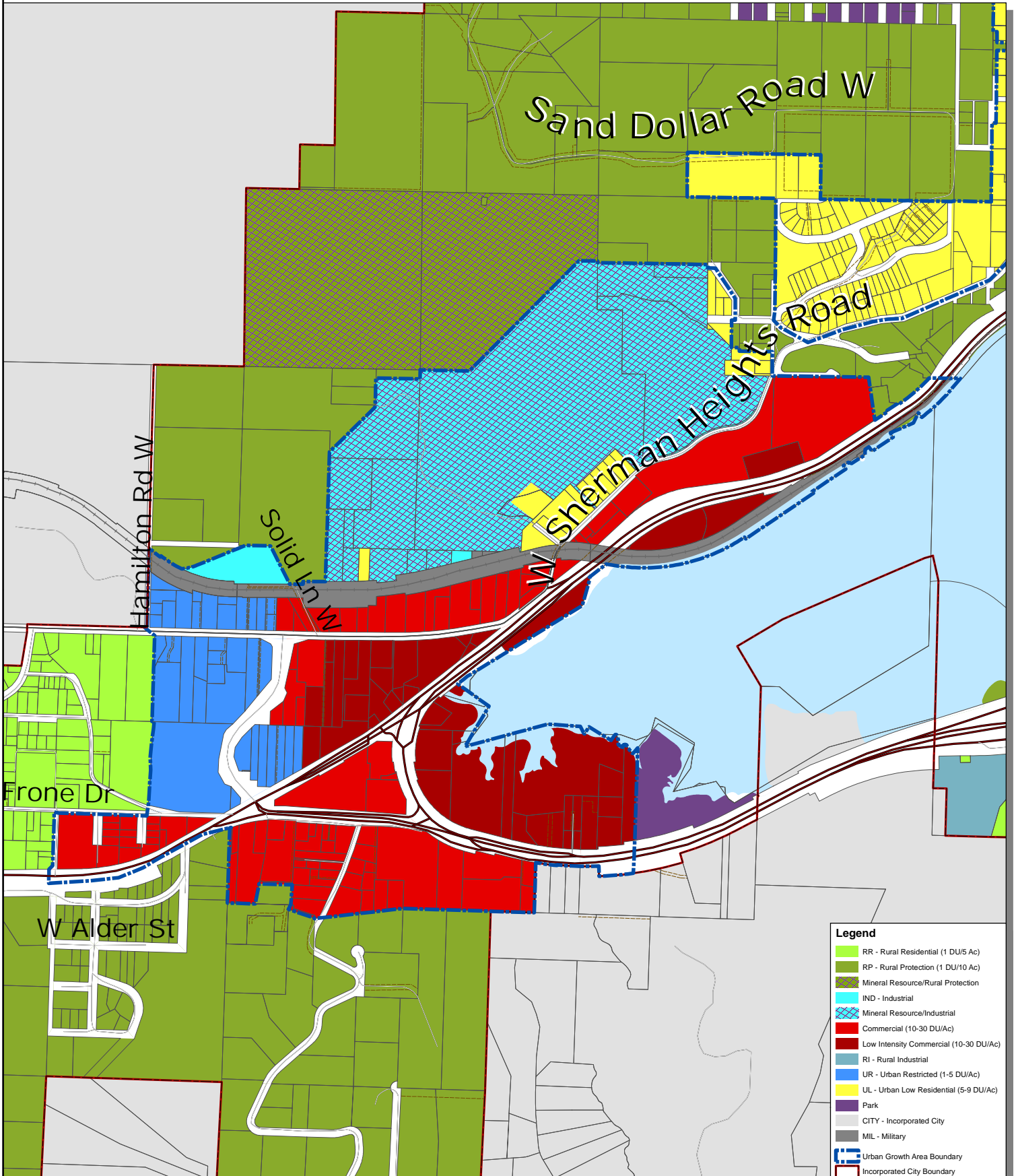


**Legend**

- IND - Industrial
- Mineral Resource/Industrial
- UR - Urban Restricted (1-5 DU/Ac)
- UL - Urban Low Residential (5-9 DU/Ac)
- Incorporated City
- Proposed Urban Growth Area Boundary
- Incorporated City Boundary
- State Highway
- Collector / Arterial
- Local Access; Local Road
- Easement
- Railroad Lines
- Greater Puget Sound hydrology

# Gorst Urban Growth Area

DRAFT



This map was created from existing map sources, not from field surveys. Determination of fitness for use lies with the user; as does the responsibility for understanding the accuracy and limitations of this map and data.

The information on this map may have been collected from various sources and can change over time without notice.

While great care was taken in making this map, there is no guarantee or warranty of its accuracy as to labeling, placement or location of any geographic features present. This map is intended for informational purposes only and is not a substitute for a field survey.

Kitsap County and its officials and employees assume no responsibility or legal liability for the accuracy, completeness, reliability, or timeliness of any information on this map.

Ord No 612-2022 Comprehensive Plan Amendment

Map Published Date: April 26, 2023



## Zoning - Alternative 1

FINAL DRAFT



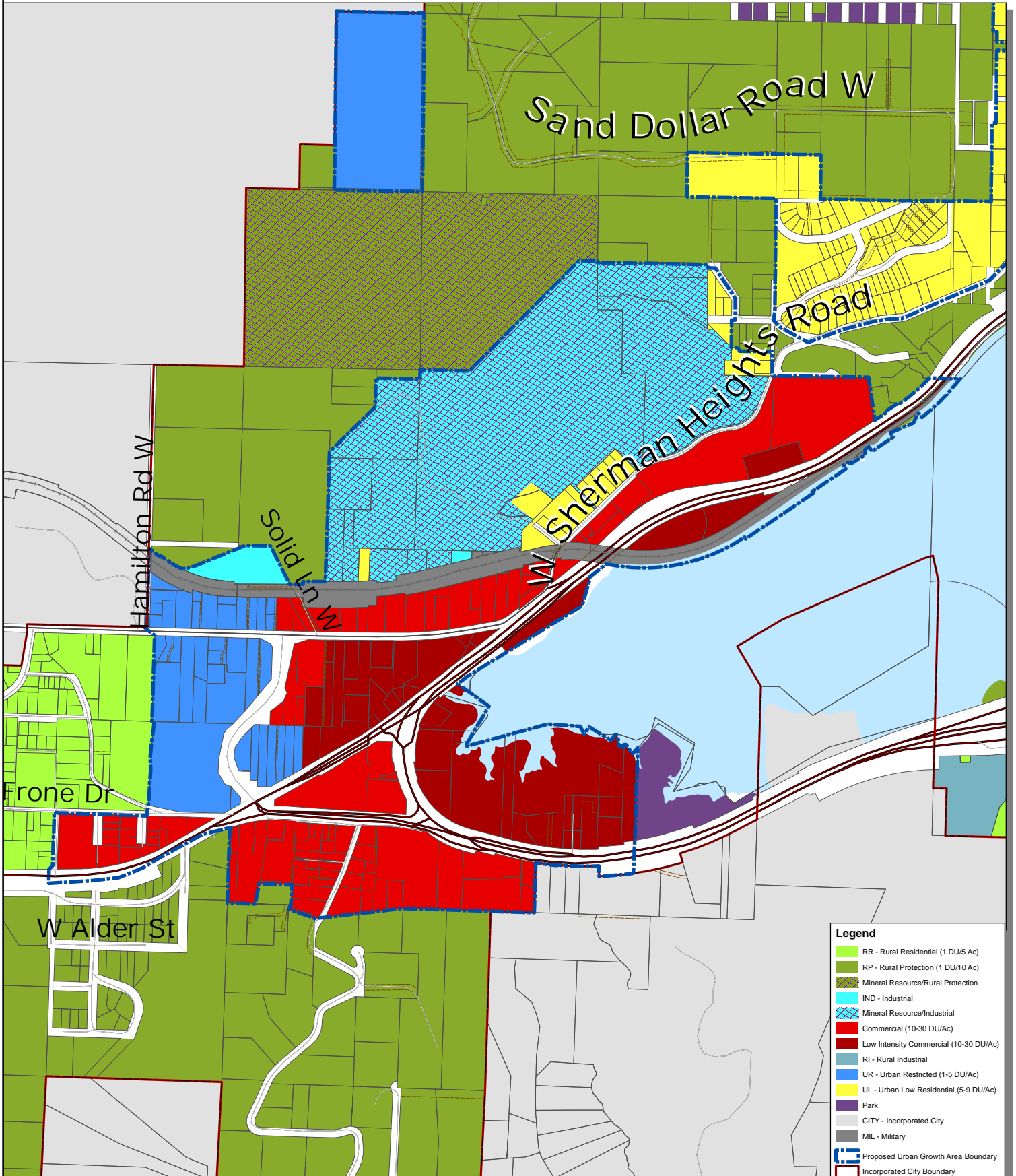
Kitsap County Department of Community Development  
 614 Division Street, MS-36, Port Orchard, Washington 98366  
 VOICE (360) 337-5777 (Kitsap One) \* <https://www.kitsapgov.com/>

### Legend

- RR - Rural Residential (1 DU/5 Ac)
- RP - Rural Protection (1 DU/10 Ac)
- Mineral Resource/Rural Protection
- IND - Industrial
- Mineral Resource/Industrial
- Commercial (10-30 DU/Ac)
- Low Intensity Commercial (10-30 DU/Ac)
- RI - Rural Industrial
- UR - Urban Restricted (1-5 DU/Ac)
- UL - Urban Low Residential (5-9 DU/Ac)
- Park
- CITY - Incorporated City
- MIL - Military
- Urban Growth Area Boundary
- Incorporated City Boundary
- State Highway
- Collector / Arterial
- Local Access; Local Road
- Easement
- Railroad Lines
- Greater Puget Sound hydrology

# Gorst Urban Growth Area

DRAFT



This map was created from existing map sources, not from field surveys. Determination of fitness for use lies with the user; as does the responsibility for understanding the accuracy and limitations of this map and data.

The information on this map may have been collected from various sources and can change over time without notice.

While great care was taken in making this map, there is no guarantee or warranty of its accuracy as to labeling, placement or location of any geographic features present. This map is intended for informational purposes only and is not a substitute for a field survey.

Kitsap County and its officials and employees assume no responsibility or legal liability for the accuracy, completeness, reliability, or timeliness of any information on this map.

Ord No 812-2022 Comprehensive Plan Amendment

Map Published Date: April 26, 2023



## Zoning - Alternative 2

FINAL DRAFT

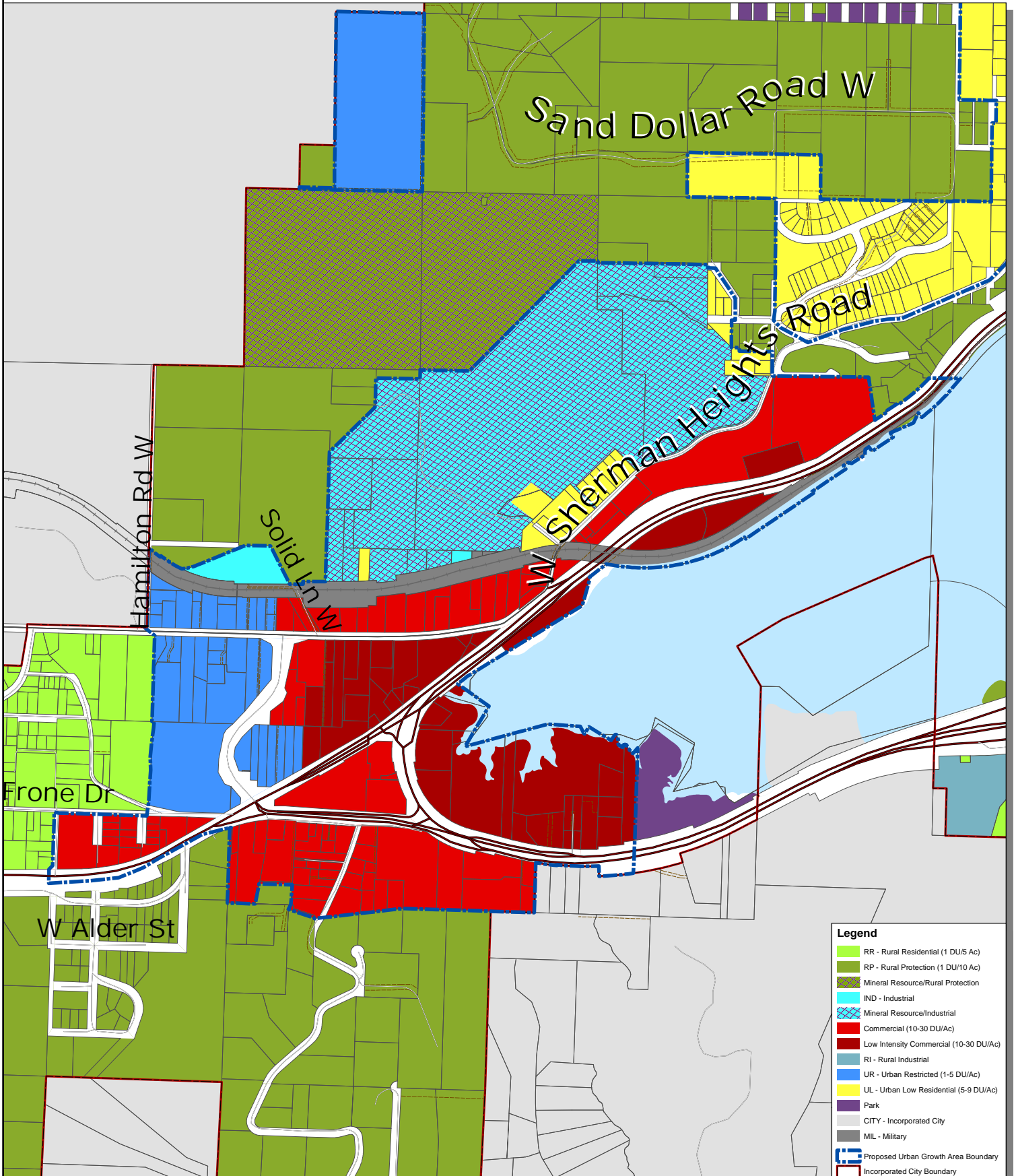


Kitsap County Department of Community Development  
 614 Division Street, MS-36, Port Orchard, Washington 98366  
 VOICE (360) 337-5777 (Kitsap One) \* <https://www.kitsapgov.com/>

- Legend**
- RR - Rural Residential (1 DU/5 Ac)
  - RP - Rural Protection (1 DU/10 Ac)
  - Mineral Resource/Rural Protection
  - IND - Industrial
  - Mineral Resource/Industrial
  - Commercial (10-30 DU/Ac)
  - Low Intensity Commercial (10-30 DU/Ac)
  - RI - Rural Industrial
  - UR - Urban Restricted (1-5 DU/Ac)
  - UL - Urban Low Residential (5-9 DU/Ac)
  - Park
  - CITY - Incorporated City
  - MIL - Military
  - Proposed Urban Growth Area Boundary
  - Incorporated City Boundary
  - State Highway
  - Collector / Arterial
  - Local Access; Local Road
  - Easement
  - Railroad Lines
  - Greater Puget Sound hydrology

# Gorst Urban Growth Area

DRAFT



This map was created from existing map sources, not from field surveys. Determination of fitness for use lies with the user; as does the responsibility for understanding the accuracy and limitations of this map and data.

The information on this map may have been collected from various sources and can change over time without notice.

While great care was taken in making this map, there is no guarantee or warranty of its accuracy as to labeling, placement or location of any geographic features present. This map is intended for informational purposes only and is not a substitute for a field survey.

Kitsap County and its officials and employees assume no responsibility or legal liability for the accuracy, completeness, reliability, or timeliness of any information on this map.

Ord No 812-2022 Comprehensive Plan Amendment

Map Published Date: April 26, 2023



## Zoning - Alternative 3

FINAL DRAFT



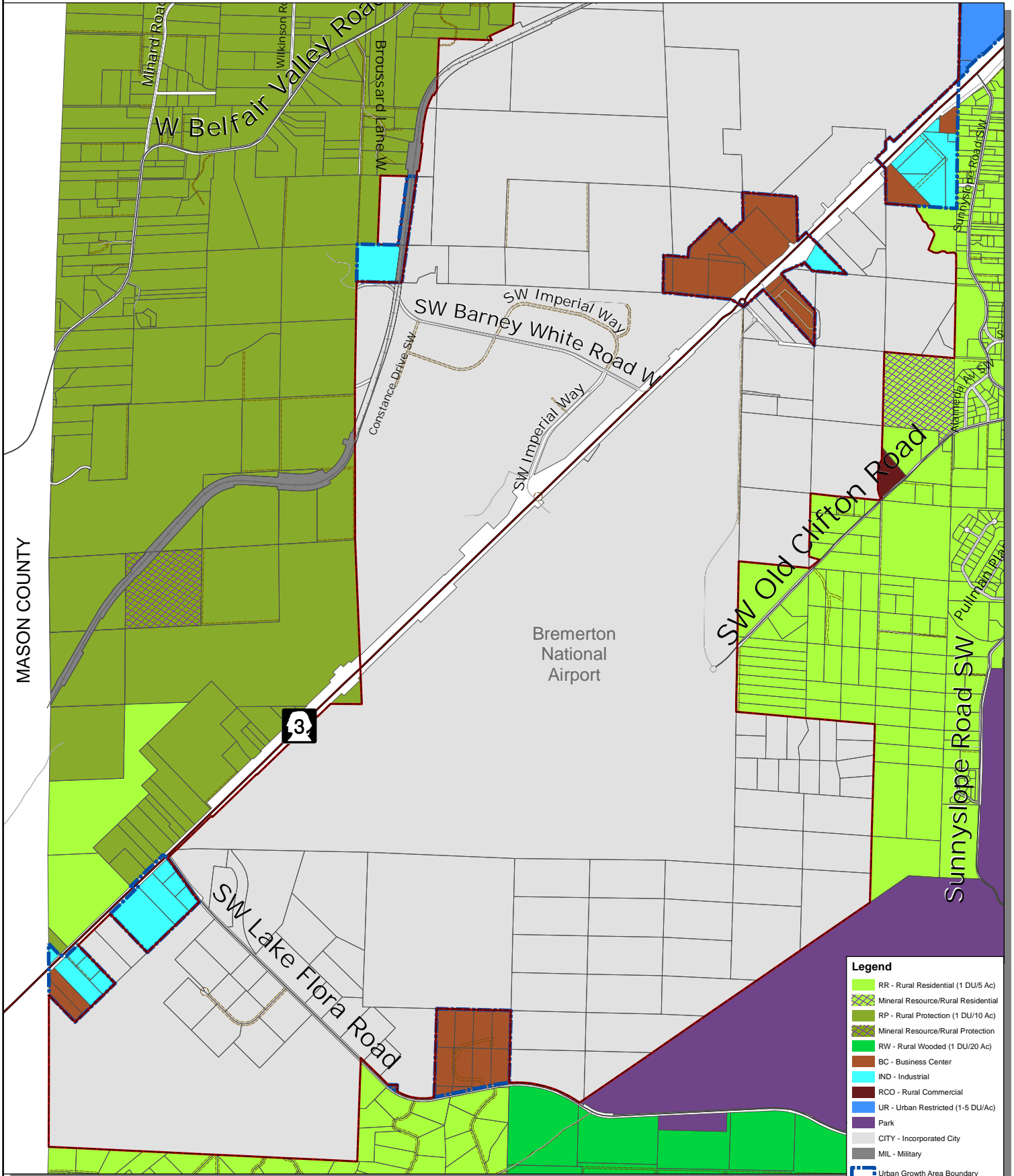
Kitsap County Department of Community Development  
 614 Division Street, MS-36, Port Orchard, Washington 98366  
 VOICE (360) 337-5777 (Kitsap One) \* <https://www.kitsapgov.com/>

- Legend**
- RR - Rural Residential (1 DU/5 Ac)
  - RP - Rural Protection (1 DU/10 Ac)
  - Mineral Resource/Rural Protection
  - IND - Industrial
  - Mineral Resource/Industrial
  - Commercial (10-30 DU/Ac)
  - Low Intensity Commercial (10-30 DU/Ac)
  - RI - Rural Industrial
  - UR - Urban Restricted (1-5 DU/Ac)
  - UL - Urban Low Residential (5-9 DU/Ac)
  - Park
  - CITY - Incorporated City
  - MIL - Military
  - Proposed Urban Growth Area Boundary
  - Incorporated City Boundary
  - State Highway
  - Collector / Arterial
  - Local Access; Local Road
  - Easement
  - Railroad Lines
  - Greater Puget Sound hydrology

# No Proposed Alternative Changes in the Gorst Urban Growth Area

# Puget Sound Industrial Area - Bremerton

DRAFT



This map was created from existing map sources, not from field surveys. Determination of fitness for use lies with the user, as does the responsibility for understanding the accuracy and limitations of this map and data.

The information on this map may have been collected from various sources and can change over time without notice.

While great care was taken in making this map, there is no guarantee or warranty of its accuracy as to labeling, placement or location of any geographic features present. This map is intended for informational purposes only and is not a substitute for a field survey.

Kitsap County and its officials and employees assume no responsibility or legal liability for the accuracy, completeness, reliability, or timeliness of any information on this map.

Ord No 812-2022 Comprehensive Plan Amendment  
Map Published Date: April 26, 2023



## Zoning - Alternative 1

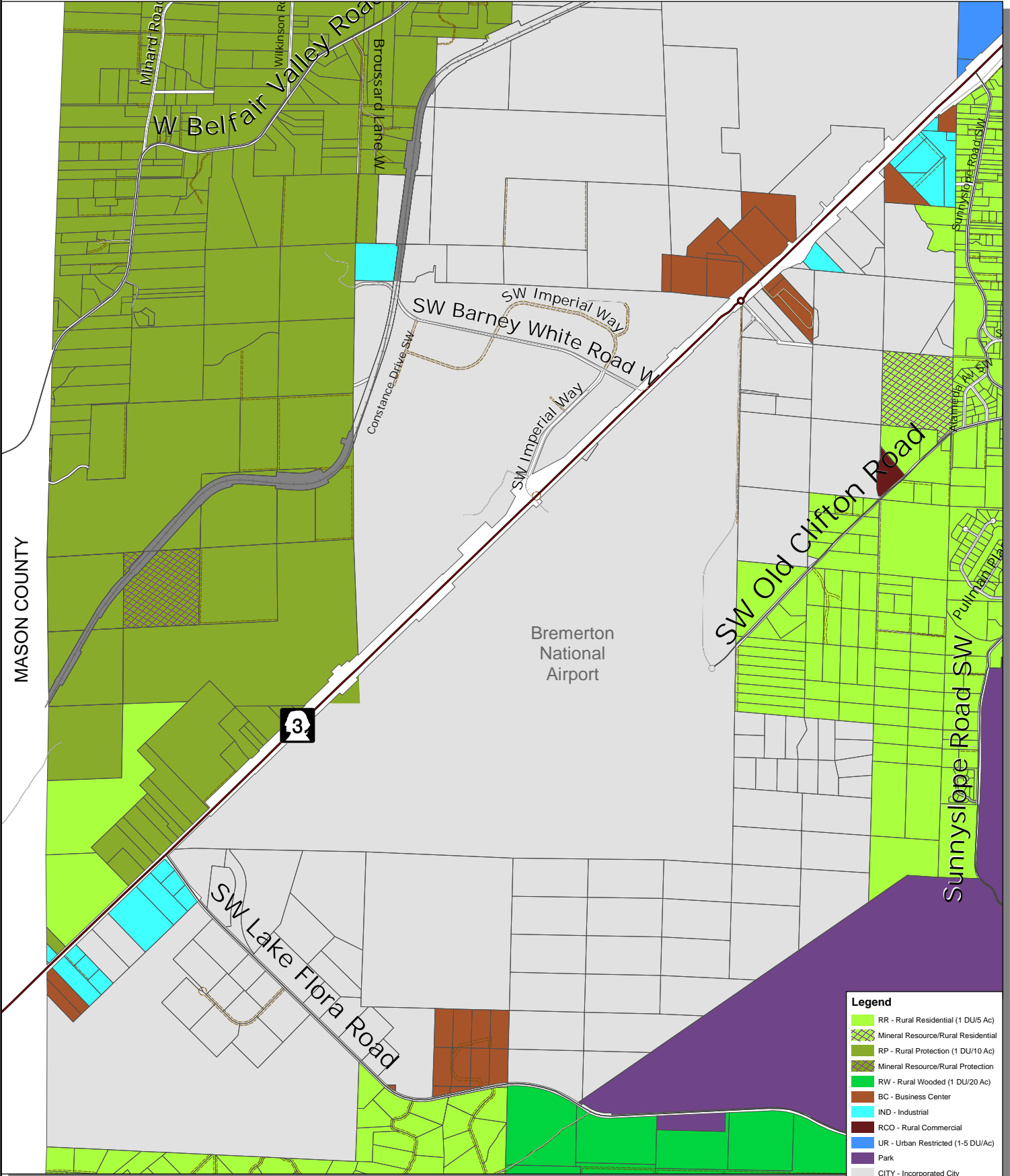
FINAL DRAFT



Kitsap County Department of Community Development  
614 Division Street, MS-36, Port Orchard, Washington 98366  
VOICE (360) 337-5777 (Kitsap One) \* <https://www.kitsapgov.com/>

# Puget Sound Industrial Area - Bremerton

DRAFT



Legend	
	RR - Rural Residential (1 DU/5 Ac)
	Mineral Resource/Rural Residential
	RP - Rural Protection (1 DU/10 Ac)
	Mineral Resource/Rural Protection
	RW - Rural Wooded (1 DU/20 Ac)
	BC - Business Center
	IND - Industrial
	RCO - Rural Commercial
	UR - Urban Restricted (1-5 DU/Ac)
	Park
	CITY - Incorporated City
	MIL - Military
	State Highway
	Collector / Arterial
	Local Access; Local Road
	Easement
	Railroad Lines

## Zoning - Alternative 2

FINAL DRAFT



Kitsap County Department of Community Development  
 614 Division Street, MS-36, Port Orchard, Washington 98366  
 VOICE (360) 337-5777 (Kitsap One) \* <https://www.kitsapgov.com/>

This map was created from existing map sources, not from field surveys. Determination of fitness for use lies with the user, as does the responsibility for understanding the accuracy and limitations of this map and data.  
 The information on this map may have been collected from various sources and can change over time without notice.  
 While great care was taken in making this map, there is no guarantee or warranty of its accuracy as to labeling, placement or location of any geographic features present. This map is intended for informational purposes only and is not a substitute for a field survey.  
 Kitsap County and its officials and employees assume no responsibility or legal liability for the accuracy, completeness, reliability, or timeliness of any information on this map.  
 Ord No 612-2022 Comprehensive Plan Amendment  
 Map Published Date: April 26, 2023

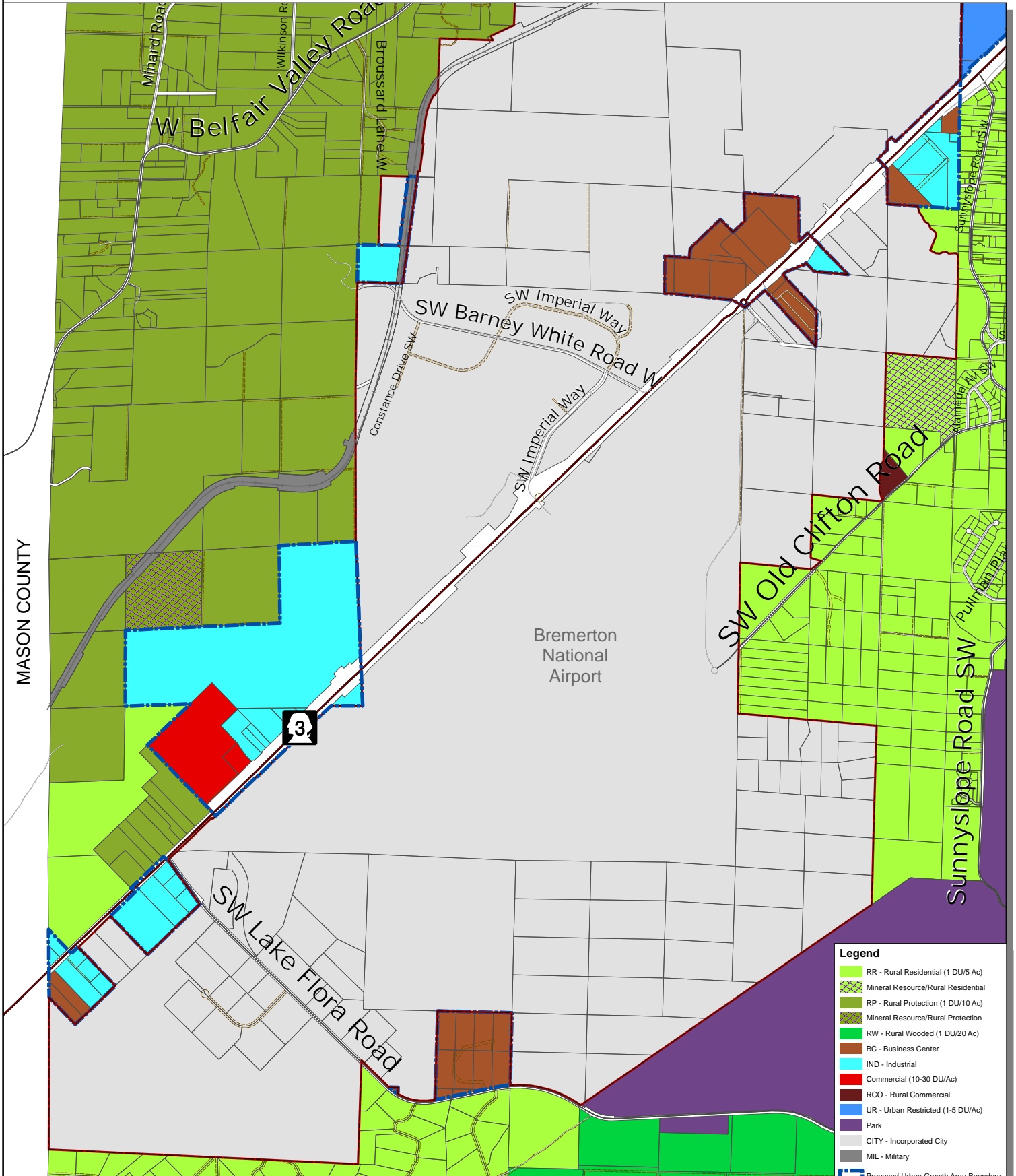




No Proposed Alternative 2 changes in the  
Puget Sound Industrial Area

# Puget Sound Industrial Area - Bremerton

DRAFT



Legend	
	RR - Rural Residential (1 DU/5 Ac)
	Mineral Resource/Rural Residential
	RP - Rural Protection (1 DU/10 Ac)
	Mineral Resource/Rural Protection
	RW - Rural Wooded (1 DU/20 Ac)
	BC - Business Center
	IND - Industrial
	Commercial (10-30 DU/Ac)
	RCO - Rural Commercial
	UR - Urban Restricted (1-5 DU/Ac)
	Park
	CITY - Incorporated City
	MIL - Military
	Proposed Urban Growth Area Boundary
	Incorporated City Boundary
	State Highway
	Collector / Arterial
	Local Access; Local Road
	Easement
	Railroad Lines

## Zoning - Alternative 3

FINAL DRAFT



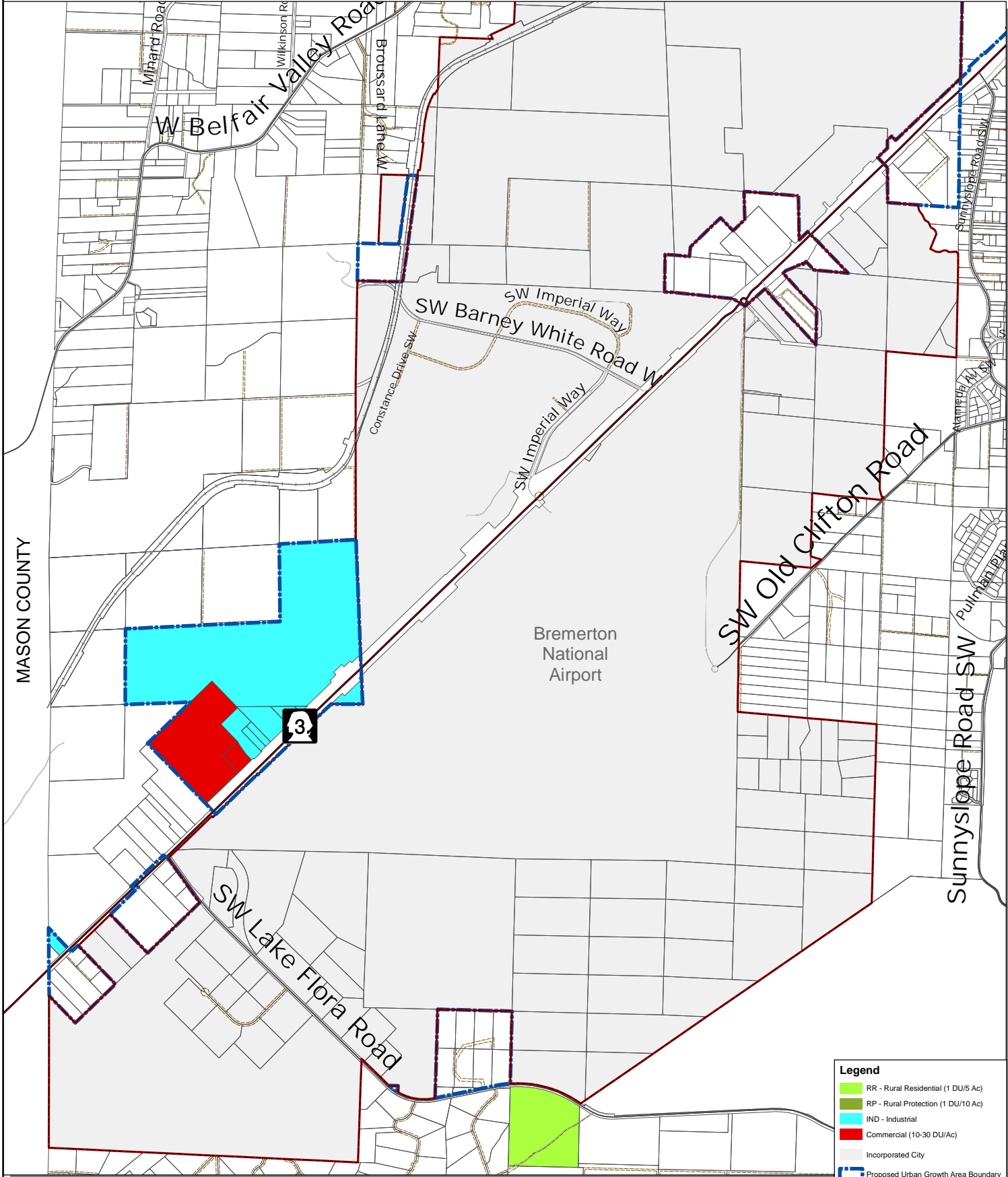
Kitsap County Department of Community Development  
 614 Division Street, MS-36, Port Orchard, Washington 98366  
 VOICE (360) 337-5777 (Kitsap One) \* <https://www.kitsapgov.com/>

This map was created from existing map sources, not from field surveys. Determination of fitness for use lies with the user, as does the responsibility for understanding the accuracy and limitations of this map and data.  
 The information on this map may have been collected from various sources and can change over time without notice.  
 While great care was taken in making this map, there is no guarantee or warranty of its accuracy as to labeling, placement or location of any geographic features present. This map is intended for informational purposes only and is not a substitute for a field survey.  
 Kitsap County and its officials and employees assume no responsibility or legal liability for the accuracy, completeness, reliability, or timeliness of any information on this map.  
 Ord No 612-2022 Comprehensive Plan Amendment  
 Map Published Date: April 26, 2023



# Puget Sound Industrial Area - Bremerton

DRAFT



- Legend**
- RR - Rural Residential (1 DU/5 Ac)
  - RP - Rural Protection (1 DU/10 Ac)
  - IND - Industrial
  - Commercial (10-30 DU/Ac)
  - Incorporated City
  - Proposed Urban Growth Area Boundary
  - Incorporated City Boundary
  - State Highway
  - Collector / Arterial
  - Local Access; Local Road
  - Easement
  - Railroad Lines

## Zoning Changes - Alternative 3

FINAL DRAFT



Kitsap County Department of Community Development  
 614 Division Street, MS-36, Port Orchard, Washington 98366  
 VOICE (360) 337-5777 (Kitsap One) \* <https://www.kitsapgov.com/>

This map was created from existing map sources, not from field surveys. Determination of fitness for use lies with the user, as does the responsibility for understanding the accuracy and limitations of this map and data.  
 The information on this map may have been collected from various sources and can change over time without notice.  
 While great care was taken in making this map, there is no guarantee or warranty of its accuracy as to labeling, placement or location of any geographic features present. This map is intended for informational purposes only and is not a substitute for a field survey.  
 Kitsap County and its officials and employees assume no responsibility or legal liability for the accuracy, completeness, reliability, or timeliness of any information on this map.  
 Ord No 812-2022 Comprehensive Plan Amendment  
 Map Published Date: April 26, 2023

