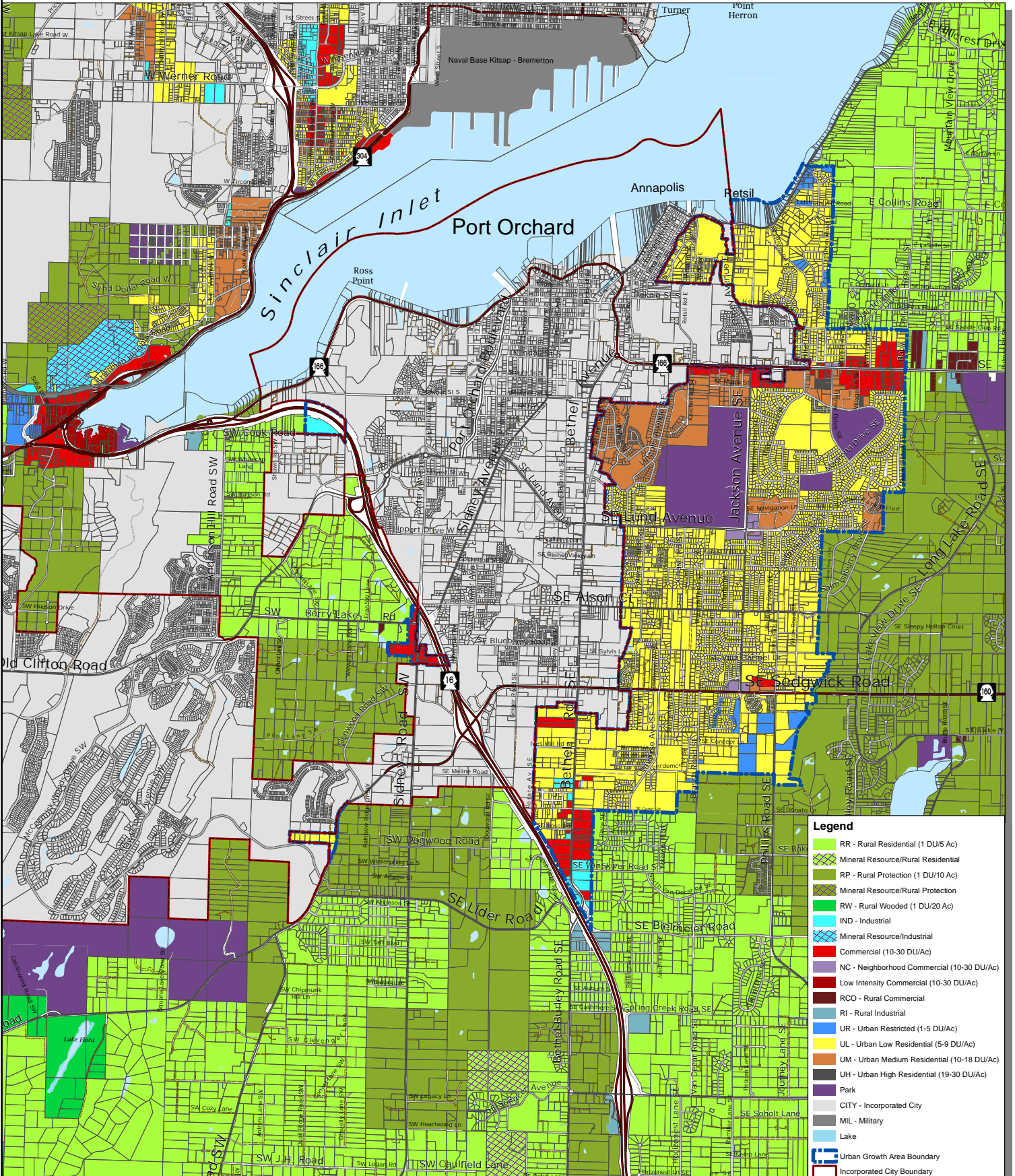


# Port Orchard Urban Growth Area

DRAFT



Legend	
[Light Green]	RR - Rural Residential (1 DU/5 Ac)
[Green with diagonal lines]	Mineral Resource/Rural Residential
[Dark Green]	RP - Rural Protection (1 DU/10 Ac)
[Green with diagonal lines]	Mineral Resource/Rural Protection
[Light Green]	RW - Rural Wooded (1 DU/20 Ac)
[Blue]	IND - Industrial
[Blue with diagonal lines]	Mineral Resource/Industrial
[Red]	Commercial (10-30 DU/Ac)
[Purple]	NC - Neighborhood Commercial (10-30 DU/Ac)
[Dark Red]	Low Intensity Commercial (10-30 DU/Ac)
[Dark Purple]	RCO - Rural Commercial
[Light Blue]	RI - Rural Industrial
[Blue]	UR - Urban Restricted (1-5 DU/Ac)
[Yellow]	UL - Urban Low Residential (5-9 DU/Ac)
[Orange]	UM - Urban Medium Residential (10-18 DU/Ac)
[Dark Orange]	UH - Urban High Residential (19-30 DU/Ac)
[Dark Blue]	Park
[Grey]	CITY - Incorporated City
[Dark Grey]	MIL - Military
[Light Blue]	Lake
[Red outline]	Urban Growth Area Boundary
[Black outline]	Incorporated City Boundary
[Thick black line]	State Highway
[Thin black line]	Collector / Arterial
[Dotted black line]	Local Access; Local Road
[Dashed black line]	Easement
[Black line with cross-ticks]	Railroad Lines
[Blue wavy line]	Greater Puget Sound hydrology

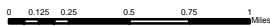
## Zoning - Alternative 1

FINAL DRAFT



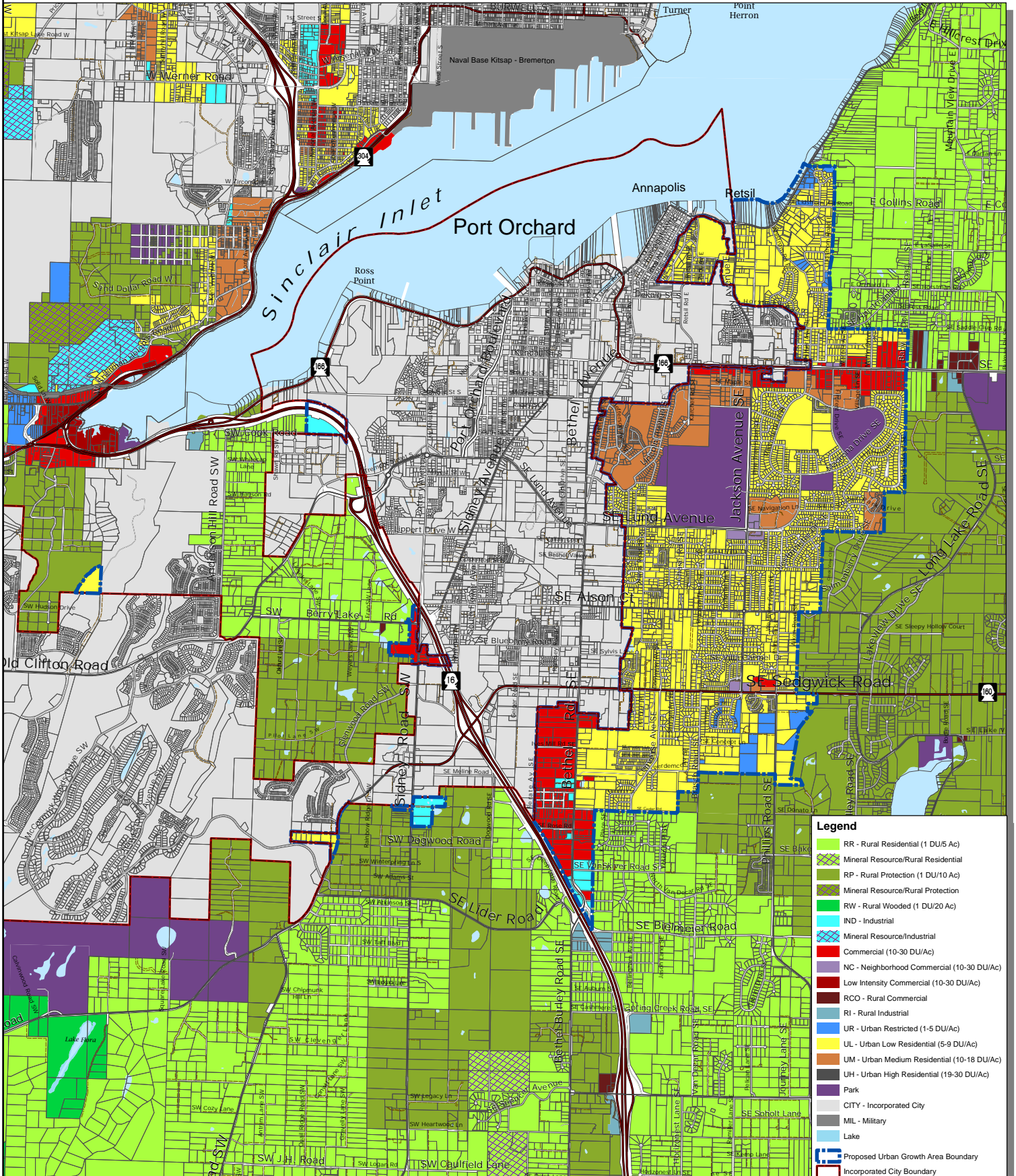
Kitsap County Department of Community Development  
 614 Division Street, MS-36, Port Orchard, Washington 98366  
 VOICE (360) 337-5777 (Kitsap One) \* <https://www.kitsapgov.com/>

This map was created from existing map sources, not from field surveys. Determination of fitness for use lies with the user, as does the responsibility for understanding the accuracy and limitations of this map and data. The information on this map may have been collected from various sources and can change over time without notice. While great care was taken in making this map, there is no guarantee or warranty of its accuracy as to labeling, placement or location of any geographic features present. This map is intended for informational purposes only and is not a substitute for a field survey. Kitsap County and its officials and employees assume no responsibility or legal liability for the accuracy, completeness, reliability, or timeliness of any information on this map. Ord No 812-2022 Comprehensive Plan Amendment. Map Published Date: April 26, 2023.



# Port Orchard Urban Growth Area

DRAFT



**Legend**

- RR - Rural Residential (1 DU/5 Ac)
- Mineral Resource/Rural Residential
- RP - Rural Protection (1 DU/10 Ac)
- Mineral Resource/Rural Protection
- RW - Rural Wooded (1 DU/20 Ac)
- IND - Industrial
- Mineral Resource/Industrial
- Commercial (10-30 DU/Ac)
- NC - Neighborhood Commercial (10-30 DU/Ac)
- Low Intensity Commercial (10-30 DU/Ac)
- RCO - Rural Commercial
- RI - Rural Industrial
- UR - Urban Restricted (1-5 DU/Ac)
- UL - Urban Low Residential (5-9 DU/Ac)
- UM - Urban Medium Residential (10-18 DU/Ac)
- UH - Urban High Residential (19-30 DU/Ac)
- Park
- CITY - Incorporated City
- MIL - Military
- Lake
- Proposed Urban Growth Area Boundary
- Incorporated City Boundary
- State Highway
- Collector / Arterial
- Local Access; Local Road
- Easement
- Railroad Lines
- Greater Puget Sound hydrology

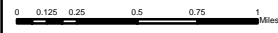
## Zoning - Alternative 2

FINAL DRAFT



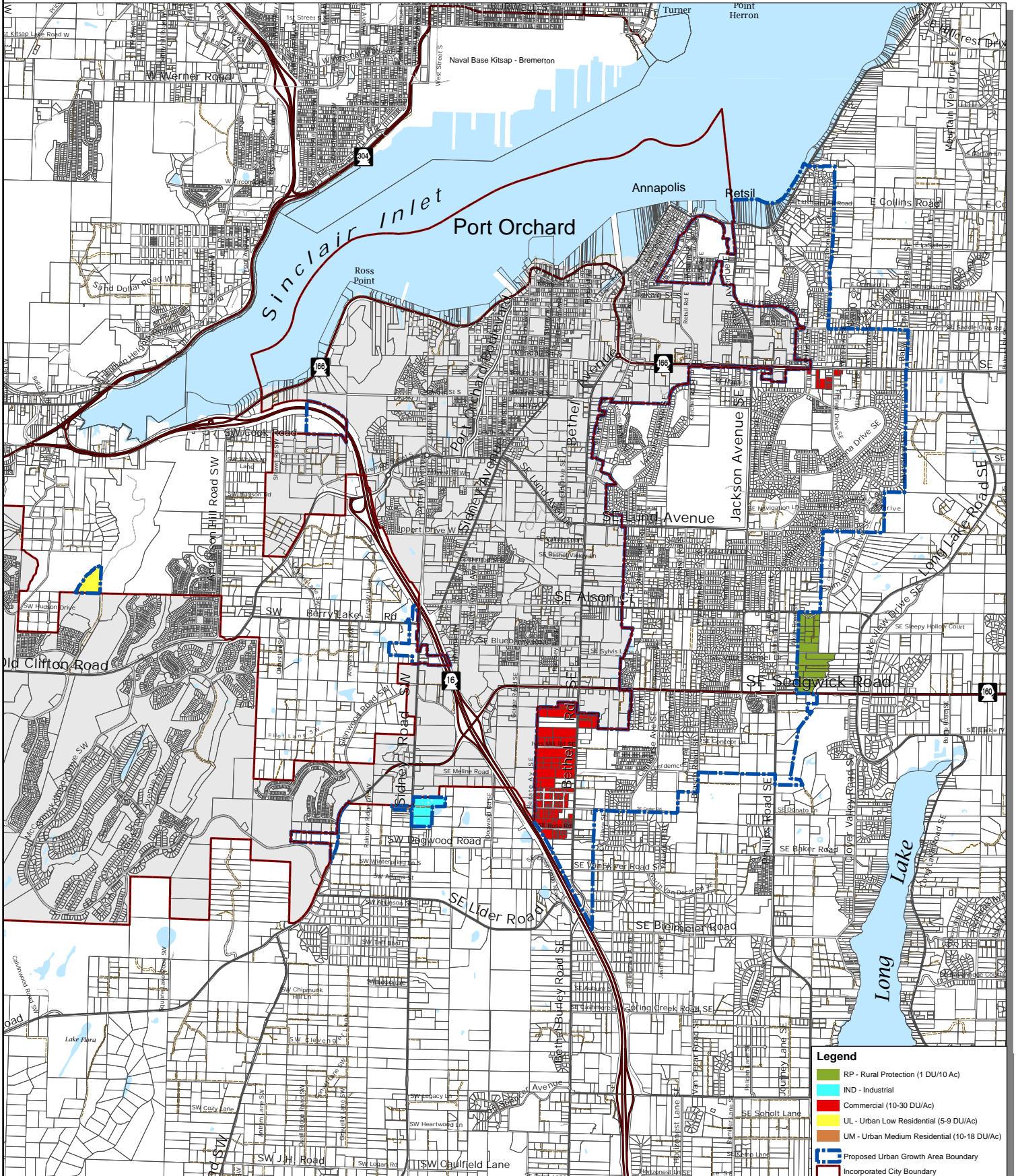
Kitsap County Department of Community Development  
 614 Division Street, MS-36, Port Orchard, Washington 98366  
 VOICE (360) 337-5777 (Kitsap One) \* <https://www.kitsapgov.com/>

This map was created from existing map sources, not from field surveys. Determination of fitness for use lies with the user, as does the responsibility for understanding the accuracy and limitations of this map and data. The information on this map may have been collected from various sources and can change over time without notice. While great care was taken in making this map, there is no guarantee or warranty of its accuracy as to labeling, placement or location of any geographic features present. This map is intended for informational purposes only and is not a substitute for a field survey. Kitsap County and its officials and employees assume no responsibility or legal liability for the accuracy, completeness, reliability, or fitness of any information on this map. Ord No 812-2022 Comprehensive Plan Amendment. Map Published Date: April 26, 2023.



# Port Orchard Urban Growth Area

DRAFT



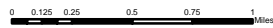
## Zoning Changes - Alternative 2

FINAL DRAFT



Kitsap County Department of Community Development  
 614 Division Street, MS-36, Port Orchard, Washington 98366  
 VOICE (360) 337-5777 (Kitsap One) \* <https://www.kitsapgov.com/>

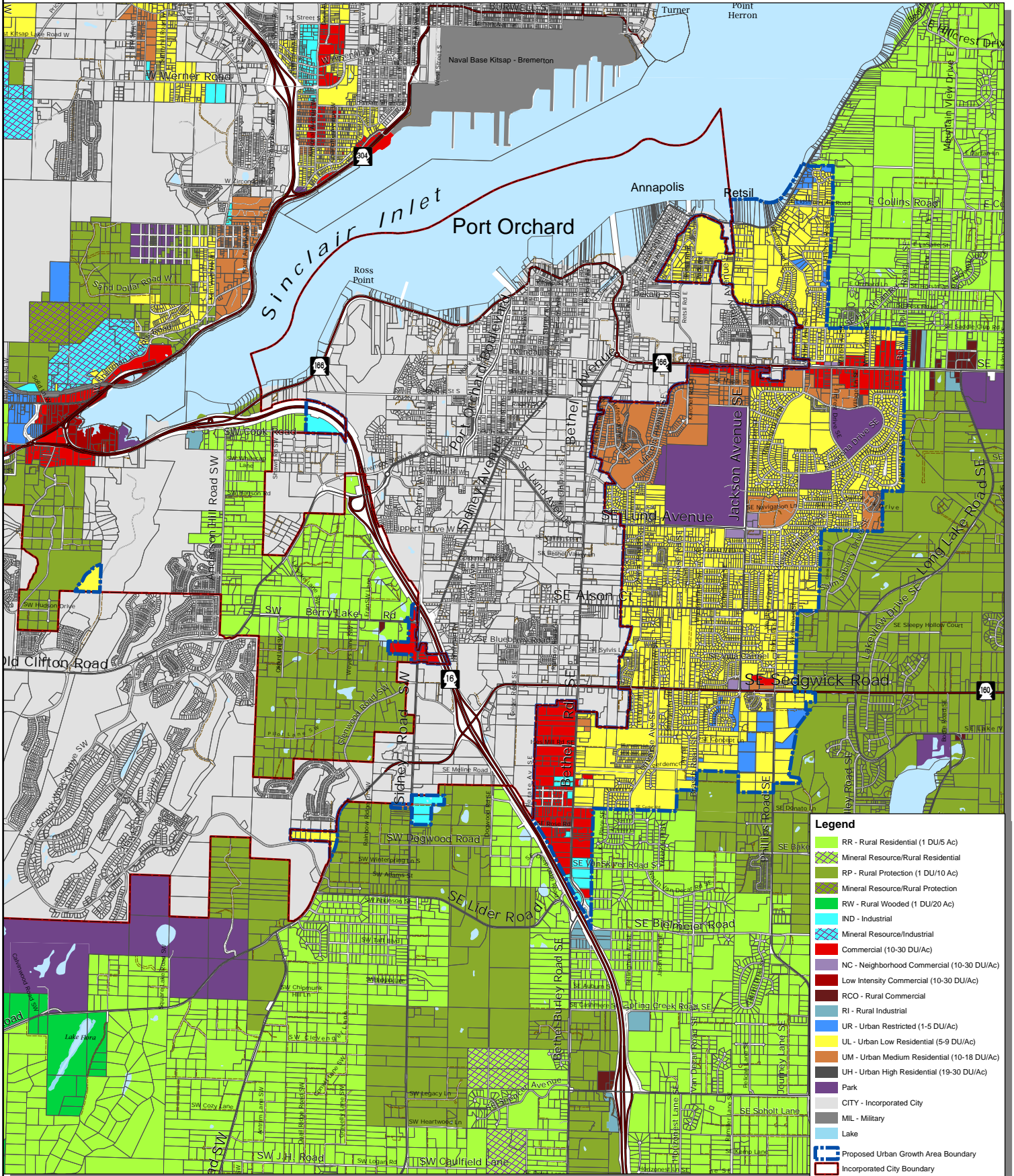
This map was created from existing map sources, not from field surveys. Determination of fitness for use lies with the user, as does the responsibility for understanding the accuracy and limitations of this map and data.  
 The information on this map may have been collected from various sources and can change over time without notice.  
 While great care was taken in making this map, there is no guarantee or warranty of its accuracy as to labeling, placement or location of any geographic features present. This map is intended for informational purposes only and is not a substitute for a field survey.  
 Kitsap County and its officials and employees assume no responsibility or legal liability for the accuracy, completeness, reliability, or timeliness of any information on this map.  
 Ord No 812-2022 Comprehensive Plan Amendment  
 Map Published Date: April 26, 2023



- Legend**
- RP - Rural Protection (1 DU/10 Ac)
  - IND - Industrial
  - Commercial (10-30 DU/Ac)
  - UL - Urban Low Residential (5-9 DU/Ac)
  - UM - Urban Medium Residential (10-18 DU/Ac)
  - Proposed Urban Growth Area Boundary
  - Incorporated City Boundary
  - State Highway
  - Collector / Arterial
  - Local Access; Local Road
  - Easement
  - Railroad Lines
  - Greater Puget Sound hydrology

# Port Orchard Urban Growth Area

DRAFT



**Legend**

- RR - Rural Residential (1 DU/5 Ac)
- Mineral Resource/Rural Residential
- RP - Rural Protection (1 DU/10 Ac)
- Mineral Resource/Rural Protection
- RW - Rural Wooded (1 DU/20 Ac)
- IND - Industrial
- Mineral Resource/Industrial
- Commercial (10-30 DU/Ac)
- NC - Neighborhood Commercial (10-30 DU/Ac)
- Low Intensity Commercial (10-30 DU/Ac)
- RCO - Rural Commercial
- RI - Rural Industrial
- UR - Urban Restricted (1-5 DU/Ac)
- UL - Urban Low Residential (5-9 DU/Ac)
- UM - Urban Medium Residential (10-18 DU/Ac)
- UH - Urban High Residential (19-30 DU/Ac)
- Park
- CITY - Incorporated City
- MIL - Military
- Lake
- Proposed Urban Growth Area Boundary
- Incorporated City Boundary
- State Highway
- Collector / Arterial
- Local Access; Local Road
- Easement
- Railroad Lines
- Greater Puget Sound hydrology

This map was created from existing map sources, not from field surveys. Determination of fitness for use lies with the user, as does the responsibility for understanding the accuracy and limitations of this map and data.

The information on this map may have been collected from various sources and can change over time without notice.

While great care was taken in making this map, there is no guarantee or warranty of its accuracy as to labeling, placement or location of any geographic features present. This map is intended for informational purposes only and is not a substitute for a field survey.

Kitsap County and its officials and employees assume no responsibility or legal liability for the accuracy, completeness, reliability, or timeliness of any information on this map.

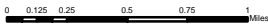
Ord No 812-2022 Comprehensive Plan Amendment  
Map Published Date: April 26, 2023

## Zoning - Alternative 3

FINAL DRAFT

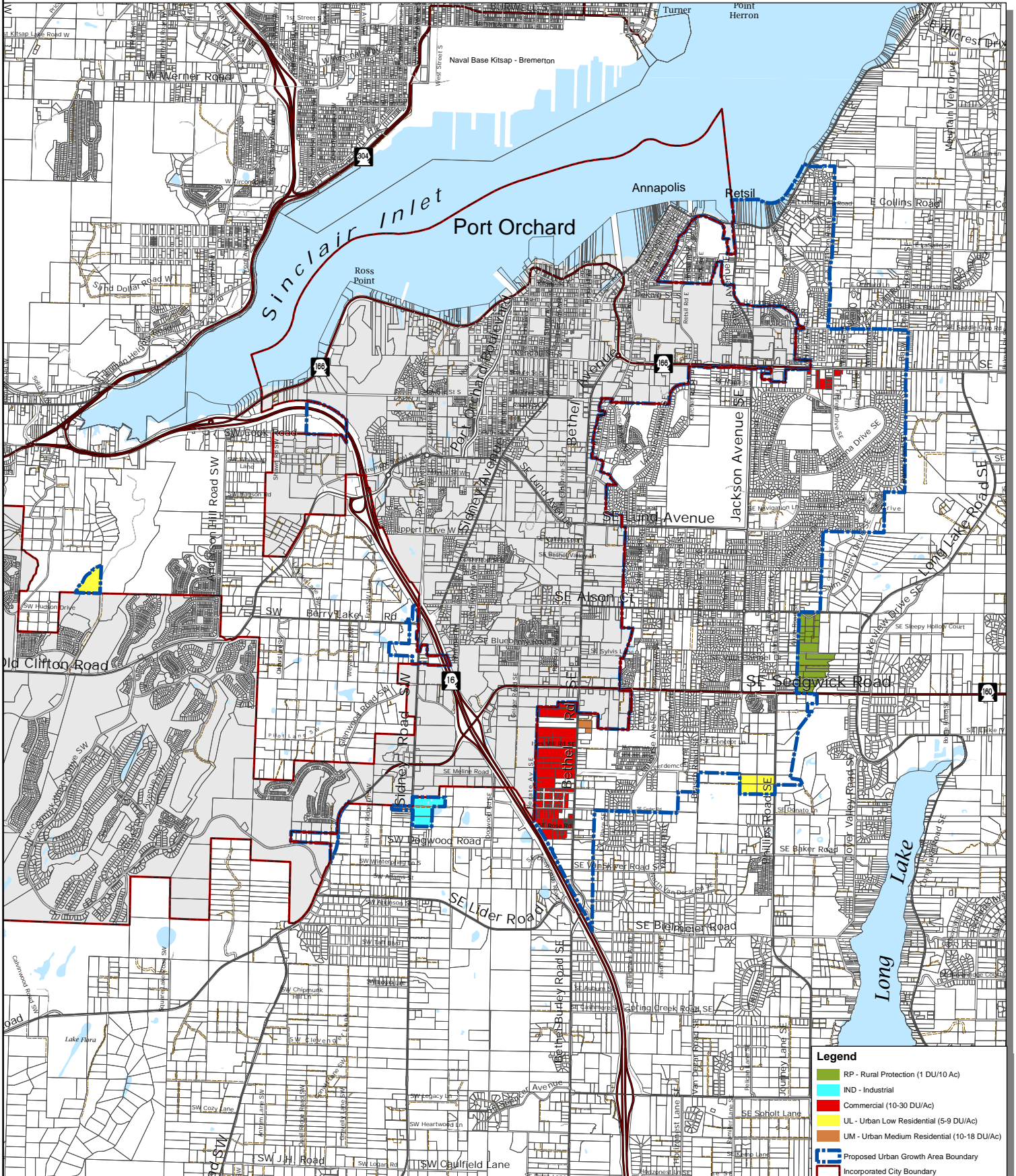


Kitsap County Department of Community Development  
614 Division Street, MS-36, Port Orchard, Washington 98366  
VOICE (360) 337-5777 (Kitsap One) \* <https://www.kitsapgov.com/>



# Port Orchard Urban Growth Area

DRAFT



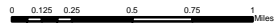
## Zoning Changes - Alternative 3

FINAL DRAFT



Kitsap County Department of Community Development  
 614 Division Street, MS-36, Port Orchard, Washington 98366  
 VOICE (360) 337-5777 (Kitsap One) \* <https://www.kitsapgov.com/>

This map was created from existing map sources, not from field surveys. Determination of fitness for use lies with the user, as does the responsibility for understanding the accuracy and limitations of this map and data.  
 The information on this map may have been collected from various sources and can change over time without notice.  
 While great care was taken in making this map, there is no guarantee or warranty of its accuracy as to labeling, placement or location of any geographic features present. This map is intended for informational purposes only and is not a substitute for a field survey.  
 Kitsap County and its officials and employees assume no responsibility or legal liability for the accuracy, completeness, reliability, or timeliness of any information on this map.  
 Ord No 812-2022 Comprehensive Plan Amendment  
 Map Published Date: April 26, 2023



- Legend**
- RP - Rural Protection (1 DU/10 Ac)
  - IND - Industrial
  - Commercial (10-30 DU/Ac)
  - UL - Urban Low Residential (5-9 DU/Ac)
  - UM - Urban Medium Residential (10-18 DU/Ac)
  - Proposed Urban Growth Area Boundary
  - Incorporated City Boundary
  - State Highway
  - Collector / Arterial
  - Local Access; Local Road
  - Easement
  - Railroad Lines
  - Greater Puget Sound hydrology