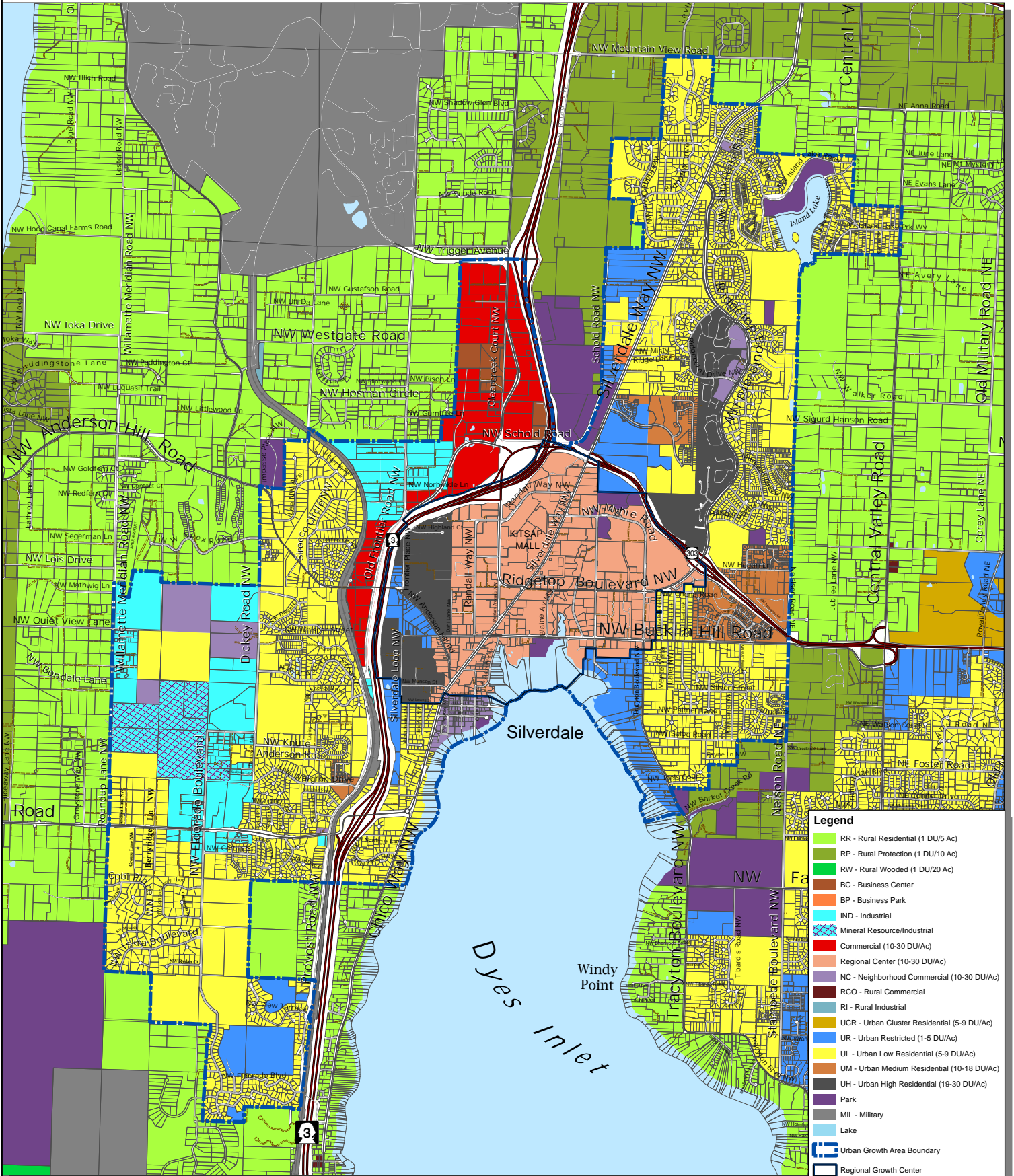


# Silverdale Urban Growth Area

DRAFT



**Legend**

- RR - Rural Residential (1 DU/5 Ac)
- RP - Rural Protection (1 DU/10 Ac)
- RW - Rural Wooded (1 DU/20 Ac)
- BC - Business Center
- BP - Business Park
- IND - Industrial
- Mineral Resource/Industrial
- Commercial (10-30 DU/Ac)
- Regional Center (10-30 DU/Ac)
- NC - Neighborhood Commercial (10-30 DU/Ac)
- RCO - Rural Commercial
- RI - Rural Industrial
- UCR - Urban Cluster Residential (5-9 DU/Ac)
- UR - Urban Restricted (1-5 DU/Ac)
- UL - Urban Low Residential (5-9 DU/Ac)
- UM - Urban Medium Residential (10-18 DU/Ac)
- UH - Urban High Residential (19-30 DU/Ac)
- Park
- MIL - Military
- Lake
- Urban Growth Area Boundary
- Regional Growth Center
- State Highway
- Collector / Arterial
- Local Access; Local Road
- Easement
- Railroad Lines
- Greater Puget Sound hydrology

This map was created from existing map sources, not from field surveys. Determination of fitness for use lies with the user, as does the responsibility for understanding the accuracy and limitations of this map and data.

The information on this map may have been collected from various sources and can change over time without notice.

While great care was taken in making this map, there is no guarantee or warranty of its accuracy as to labeling, placement or location of any geographic features present. This map is intended for informational purposes only and is not a substitute for a field survey.

Kitsap County and its officials and employees assume no responsibility or legal liability for the accuracy, completeness, reliability, or timeliness of any information on this map.

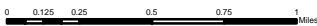
Ord No 81-2022 Comprehensive Plan Amendment  
Map Published Date: April 26, 2023

## Zoning - Alternative 1

FINAL DRAFT

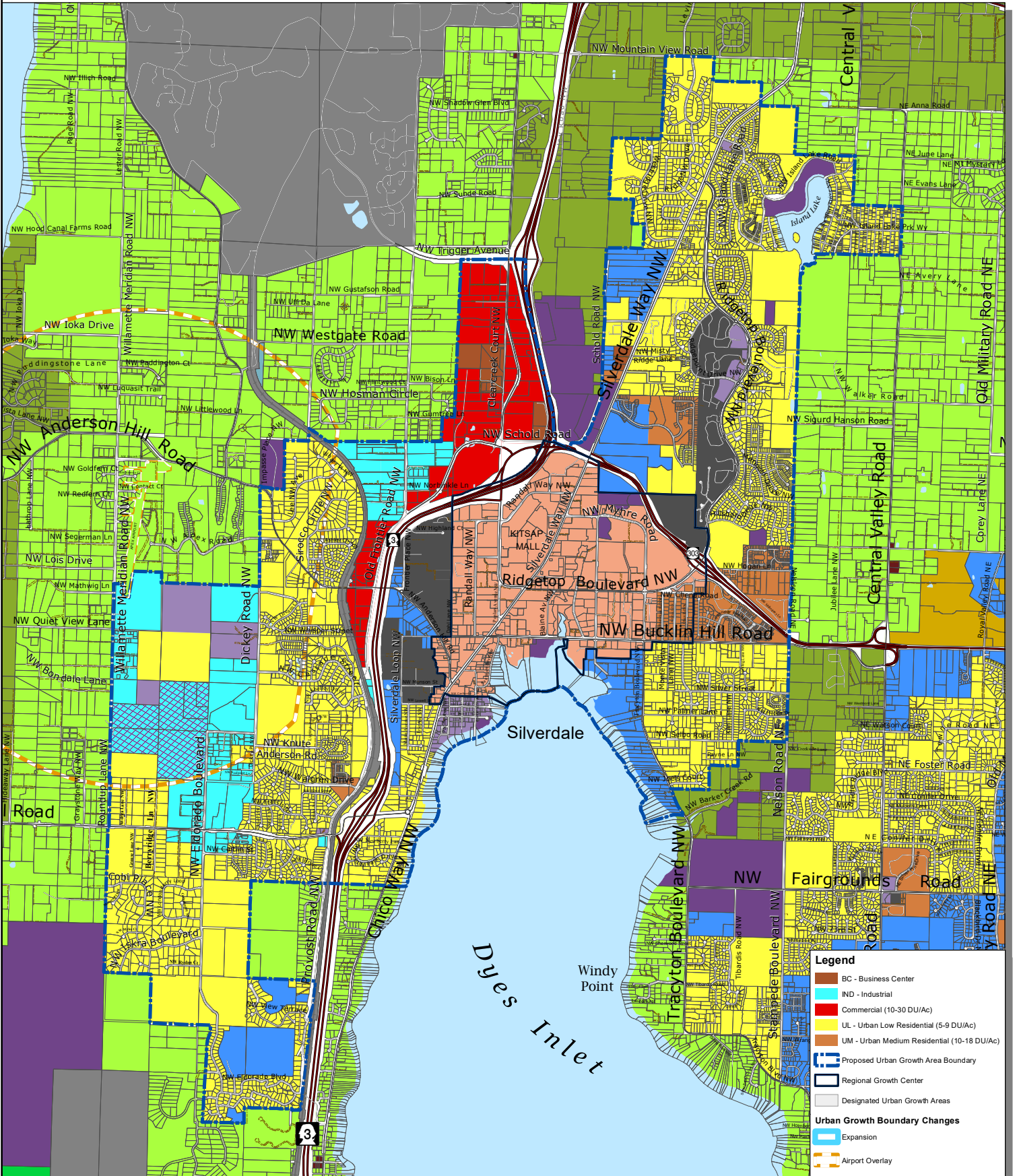


Kitsap County Department of Community Development  
614 Division Street, MS-36, Port Orchard, Washington 98366  
VOICE (360) 337-5777 (Kitsap One) \* <https://www.kitsapgov.com/>



# Silverdale Urban Growth Area

DRAFT



This map was created from existing map sources, not from field surveys. Determination of fitness for use lies with the user, as does the responsibility for understanding the accuracy and limitations of this map and data.

The information on this map may have been collected from various sources and can change over time without notice.

While great care was taken in making this map, there is no guarantee or warranty of its accuracy as to labeling, placement or location of any geographic features present. This map is intended for informational purposes only and is not a substitute for a field survey.

Kitsap County and its officials and employees assume no responsibility or legal liability for the accuracy, completeness, reliability or fitness of any information on this map.

Ord No 612-2022 Comprehensive Plan Amendment  
Map Published Date: April 28, 2023

## Zoning - Alternative 2

FINAL DRAFT



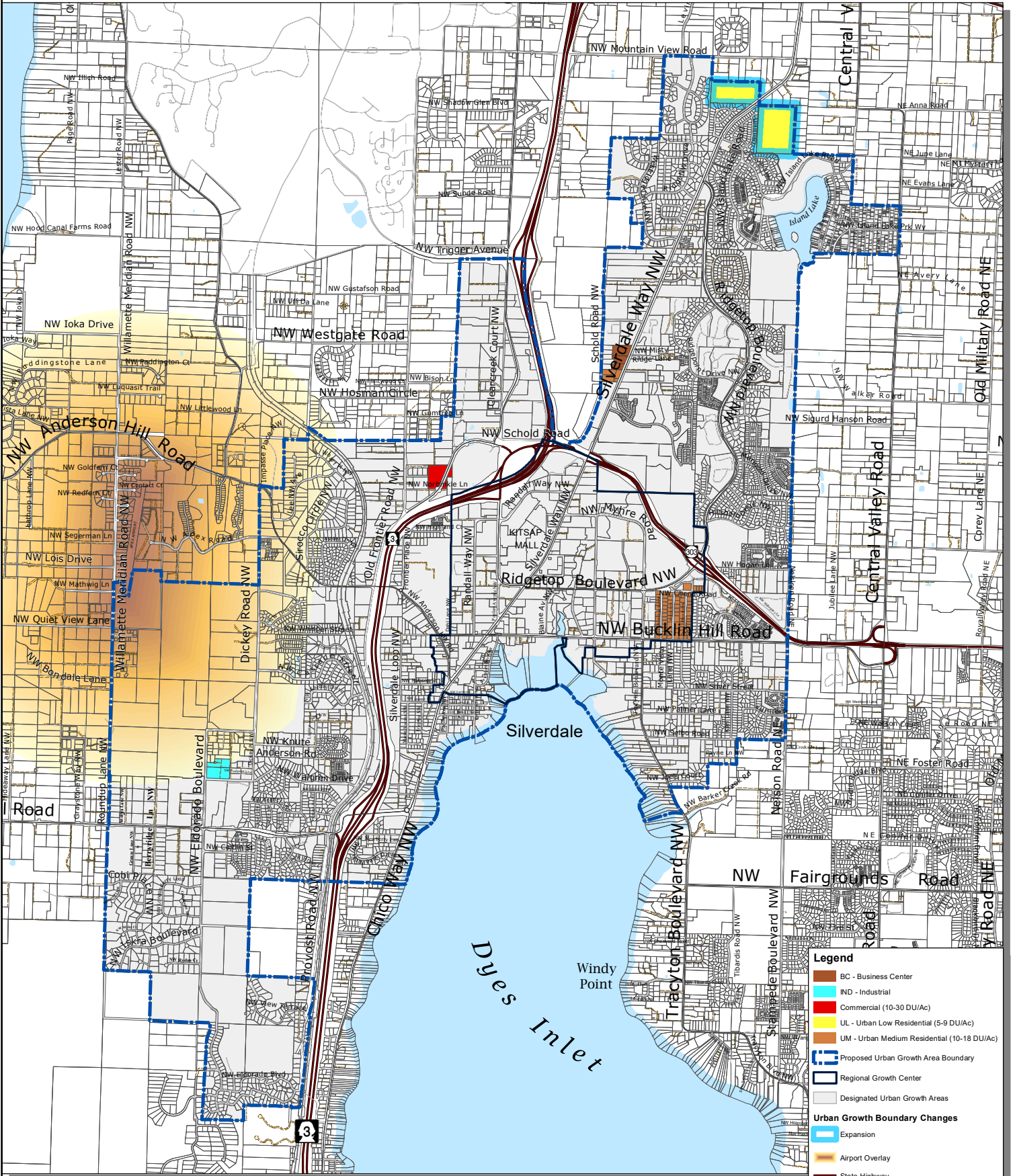
Kitsap County Department of Community Development  
614 Division Street, MS-36, Port Orchard, Washington 98366  
VOICE (360) 337-5777 (Kitsap One) \* <https://www.kitsapgov.com/>

- Legend**
- BC - Business Center
  - ND - Industrial
  - Commercial (10-30 DU/Ac)
  - UL - Urban Low Residential (5-9 DU/Ac)
  - UM - Urban Medium Residential (10-18 DU/Ac)
  - Proposed Urban Growth Area Boundary
  - Regional Growth Center
  - Designated Urban Growth Areas
  - Urban Growth Boundary Changes**
  - Expansion
  - Airport Overlay
  - State Highway
  - Collector / Arterial
  - Local Access; Local Road
  - Easement
  - Railroad Lines
  - Greater Puget Sound hydrology

0 0.125 0.25 0.5 0.75 1 Miles

# Silverdale Urban Growth Area

DRAFT



**Legend**

- BC - Business Center
- ND - Industrial
- Commercial (10-30 DU/Ac)
- UL - Urban Low Residential (5-9 DU/Ac)
- UM - Urban Medium Residential (10-18 DU/Ac)
- Proposed Urban Growth Area Boundary
- Regional Growth Center
- Designated Urban Growth Areas
- Urban Growth Boundary Changes
  - Expansion
  - Airport Overlay
- State Highway
- Collector / Arterial
- Local Access; Local Road
- Easement
- Railroad Lines
- Greater Puget Sound hydrology

This map was created from existing map sources, not from field surveys. Determination of fitness for use lies with the user, as does the responsibility for understanding the accuracy and limitations of this map and data.

The information on this map may have been collected from various sources and can change over time without notice.

While great care was taken in making this map, there is no guarantee or warranty of its accuracy as to labeling, placement or location of any geographic features present. This map is intended for informational purposes only and is not a substitute for a field survey.

Kitsap County and its officials and employees assume no responsibility or legal liability for the accuracy, completeness, reliability or fitness of any information on this map.

Ord No 612-2022 Comprehensive Plan Amendment

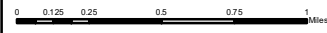
Map Published Date: April 28, 2023

## Zoning Changes - Alternative 2

FINAL DRAFT

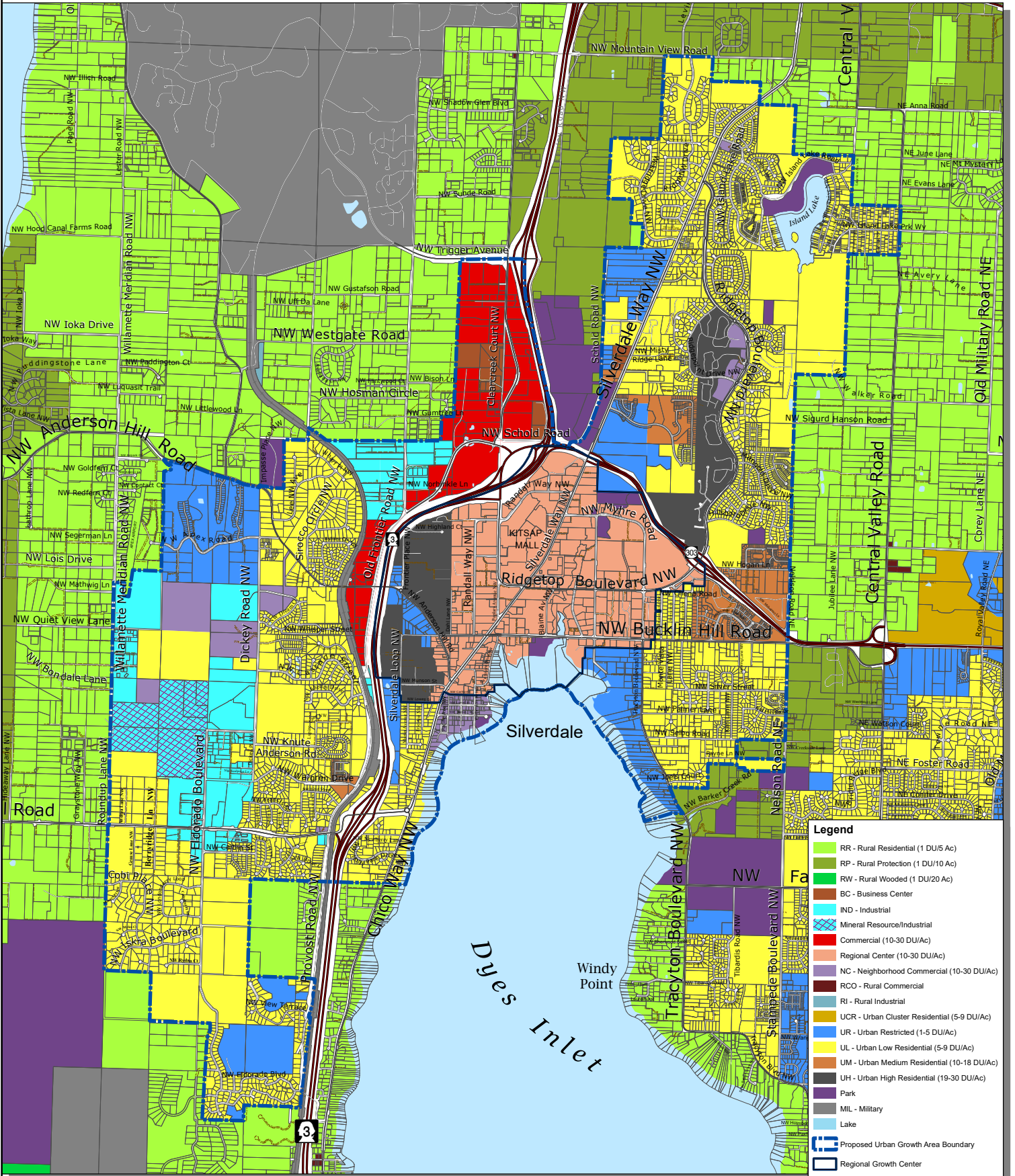


Kitsap County Department of Community Development  
 614 Division Street, MS-36, Port Orchard, Washington 98366  
 VOICE (360) 337-5777 (Kitsap One) \* <https://www.kitsapgov.com/>



# Silverdale Urban Growth Area

DRAFT



**Legend**

- RR - Rural Residential (1 DU/5 Ac)
- RP - Rural Protection (1 DU/10 Ac)
- RW - Rural Wooded (1 DU/20 Ac)
- BC - Business Center
- IND - Industrial
- Mineral Resource/Industrial
- Commercial (10-30 DU/Ac)
- Regional Center (10-30 DU/Ac)
- NC - Neighborhood Commercial (10-30 DU/Ac)
- RCO - Rural Commercial
- RI - Rural Industrial
- UCR - Urban Cluster Residential (5-9 DU/Ac)
- UR - Urban Restricted (1-5 DU/Ac)
- UL - Urban Low Residential (5-9 DU/Ac)
- UM - Urban Medium Residential (10-18 DU/Ac)
- UH - Urban High Residential (19-30 DU/Ac)
- Park
- MIL - Military
- Lake
- Proposed Urban Growth Area Boundary
- Regional Growth Center
- State Highway
- Collector / Arterial
- Local Access; Local Road
- Easement
- Railroad Lines
- Greater Puget Sound hydrology

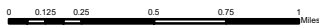
## Zoning - Alternative 3

FINAL DRAFT



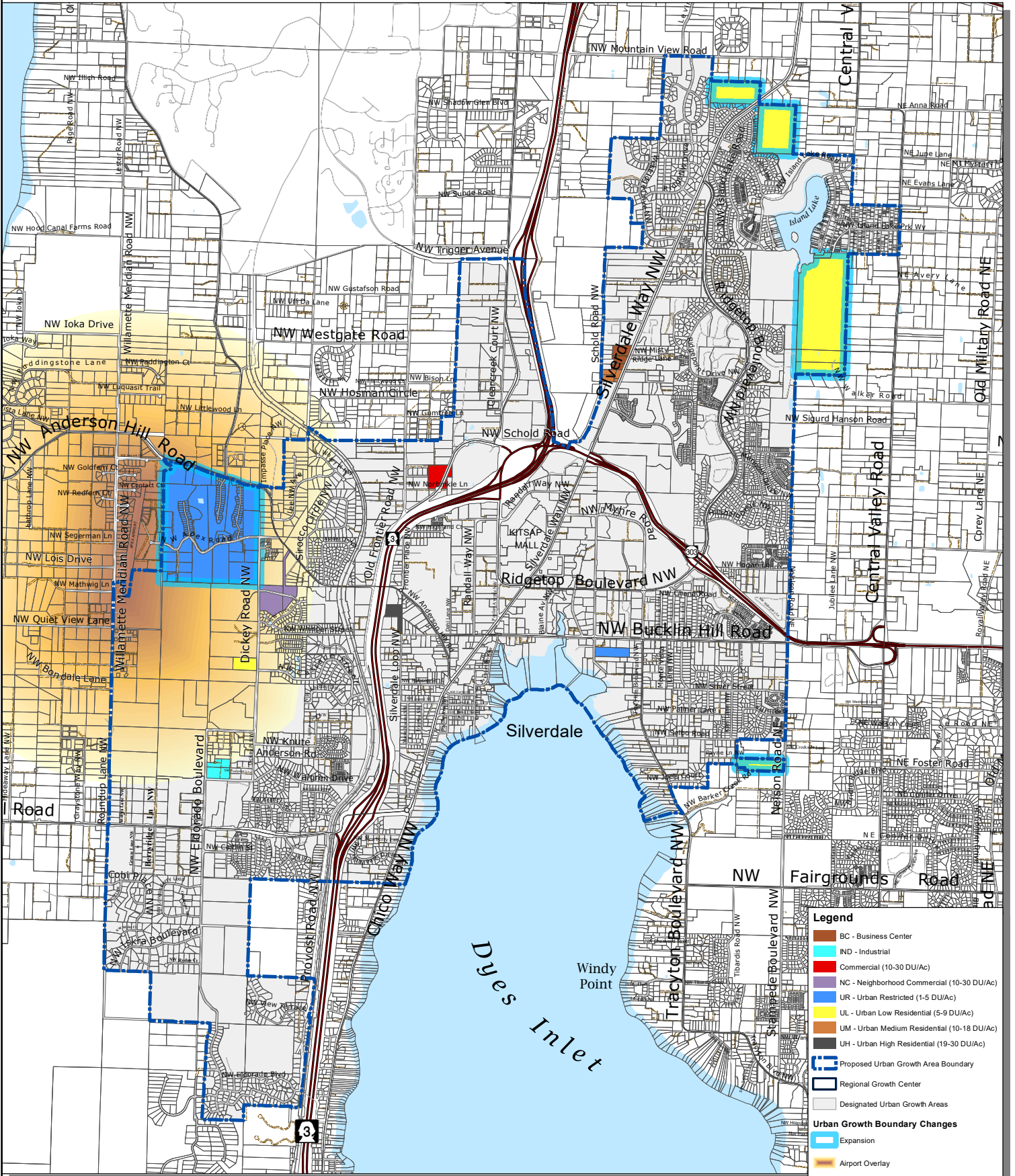
Kitsap County Department of Community Development  
 614 Division Street, MS-36, Port Orchard, Washington 98366  
 VOICE (360) 337-5777 (Kitsap One) \* <https://www.kitsapgov.com/>

This map was created from existing map sources, not from field surveys. Determination of fitness for use lies with the user, as does the responsibility for understanding the accuracy and limitations of this map and data.  
 The information on this map may have been collected from various sources and can change over time without notice.  
 While great care was taken in making this map, there is no guarantee or warranty of its accuracy as to labeling, placement or location of any geographic features present. This map is intended for informational purposes only and is not a substitute for a field survey.  
 Kitsap County and its officials and employees assume no responsibility or legal liability for the accuracy, completeness, reliability or fitness of any information on this map.  
 Ord No 812-2022 Comprehensive Plan Amendment  
 Map Published Date: April 26, 2023



# Silverdale Urban Growth Area

DRAFT



This map was created from existing map sources, not from field surveys. Determination of fitness for use lies with the user, as does the responsibility for understanding the accuracy and limitations of this map and data.

The information on this map may have been collected from various sources and can change over time without notice.

While great care was taken in making this map, there is no guarantee or warranty of its accuracy as to labeling, placement or location of any geographic features present. This map is intended for informational purposes only and is not a substitute for a field survey.

Kitsap County and its officials and employees assume no responsibility or legal liability for the accuracy, completeness, reliability or fitness of any information on this map.

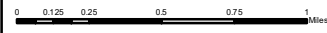
Ord No 612-2022 Comprehensive Plan Amendment  
Map Published Date: April 28, 2023

## Zoning Changes - Alternative 3

FINAL DRAFT



Kitsap County Department of Community Development  
614 Division Street, MS-36, Port Orchard, Washington 98366  
VOICE (360) 337-5777 (Kitsap One) \* <https://www.kitsapgov.com/>



- Legend**
- BC - Business Center
  - ND - Industrial
  - Commercial (10-30 DU/Ac)
  - NC - Neighborhood Commercial (10-30 DU/Ac)
  - UR - Urban Restricted (1-5 DU/Ac)
  - UL - Urban Low Residential (5-9 DU/Ac)
  - UM - Urban Medium Residential (10-18 DU/Ac)
  - UH - Urban High Residential (19-30 DU/Ac)
  - Proposed Urban Growth Area Boundary
  - Regional Growth Center
  - Designated Urban Growth Areas
  - Urban Growth Boundary Changes**
  - Expansion
  - Airport Overlay
  - State Highway
  - Collector / Arterial
  - Local Access; Local Road
  - Easement
  - Railroad Lines
  - Greater Puget Sound hydrology