

RESOLUTION NO. 124 - 2010

A RESOLUTION ADOPTING THE NEWBERRY HILL HERITAGE PARK
CONCEPTUAL MASTER PLAN TO GUIDE FUTURE DECISIONS AND ACTIONS
RELATED TO THE PARK IN SILVERDALE, WASHINGTON

WHEREAS, Park planning by the Kitsap County Parks and Recreation Department is guided by the Parks Recreation Open Space Plan (PROS) adopted by the Board of County Commissioners on June 26, 2006; and

WHEREAS, Kitsap County PROS established that open space should be managed with an eye toward eventually becoming an interconnected system, primarily for the habitat value and where appropriate, should allow for connection to regional, local and other facilities with a countywide trail system; and

WHEREAS, Kitsap County PROS identified the completion of the acquisition of Newberry Hill Heritage Park as an element of the open space inventory;

WHEREAS, Kitsap County received ownership of the Newberry Hill Heritage Park northern parcel of 247 acres in 2004; and

WHEREAS, Kitsap County received ownership of the Newberry Hill Heritage Park southern parcel of 520 acres from the Department of Natural Resources in 2009; and

WHEREAS, Kitsap County anticipates receiving ownership of the Newberry Hill Heritage Park central parcel of 315 acres in 2010; and

WHEREAS, the Kitsap County Parks and Recreation Department engaged in a public planning process with five well-attended public workshops between November 2009 and April 2010; and

WHEREAS, this significant community involvement effort culminated in a long-term development plan for Newberry Hill Heritage Park; and

WHEREAS, the resulting long-term development plan for Newberry Hill Heritage Park was presented at the Parks and Recreation Advisory Board on April 21, 2010; and

WHEREAS, on that date the Kitsap County Parks and Recreation Advisory Board recommended the adoption of the Conceptual Master Plan for Newberry Hill Heritage Park to the Board of County Commissioners (see Exhibit A);

NOW THEREFORE, BE IT RESOLVED; that the Board of County Commissioners adopts the Newberry Hill Heritage Park Conceptual Master Plan (Exhibit A) in a public meeting as the guiding document for all future actions at Newberry Hill Heritage Park.

NOW THEREFORE, BE IT FURTHER RESOLVED; by the Kitsap County Board of Commissioners that the Kitsap County Parks and Recreation Director be authorized to negotiate and enter into a Memorandum of Agreement with the Newberry Hill Heritage Park Stewardship Group in conformance with the standard Memorandum of Agreement used with all Stewardship Groups;

NOW THEREFORE, BE IT FURTHER RESOLVED; by the Kitsap County Board of Commissioners that the Kitsap County Parks and Recreation Director be authorized to develop trail building and management standards based on the *USDA/US Forest Service Trail Construction and Maintenance Notebook* to provide recreational trail use and protect sensitive ecological systems at Newberry Hill Heritage Park;


NOW THEREFORE, BE IT FURTHER RESOLVED; by the Kitsap County Board of Commissioners that the Kitsap County Parks and Recreation Director be authorized to negotiate inter-local agreements as needed with the Central Kitsap School District and Central Kitsap Fire and Rescue to formalize shared use, access, and maintenance needs related to the Newberry Hill Heritage Park;

NOW THEREFORE, BE IT FURTHER RESOLVED; by the Kitsap County Board of Commissioners that the Kitsap County Parks and Recreation Director be authorized to create a final Master Plan report that will summarize the November 2009 – May 2010 public planning process; review restrictions on portions of the land related to grant funding; name the activities that are allowed and not allowed within the park according to the master plan; enumerate uses that do not appear in the master plan but that were discussed as potential future uses at the park as community needs evolve; describe trail building and maintenance standards; document sensitive ecological areas in need of protection from more intensive recreational uses; document existing and future trail alignments; list park rules; and include any inter-local agreements or memorandums of agreement related to shared use and maintenance needs related to the Newberry Hill Heritage Park.

APPROVED AND ADOPTED this 28th day of June, 2010.

BOARD OF COUNTY COMMISSIONERS
KITSAP COUNTY, WASHINGTON





Josh Brown, Chair



Steve Bauer, Commissioner



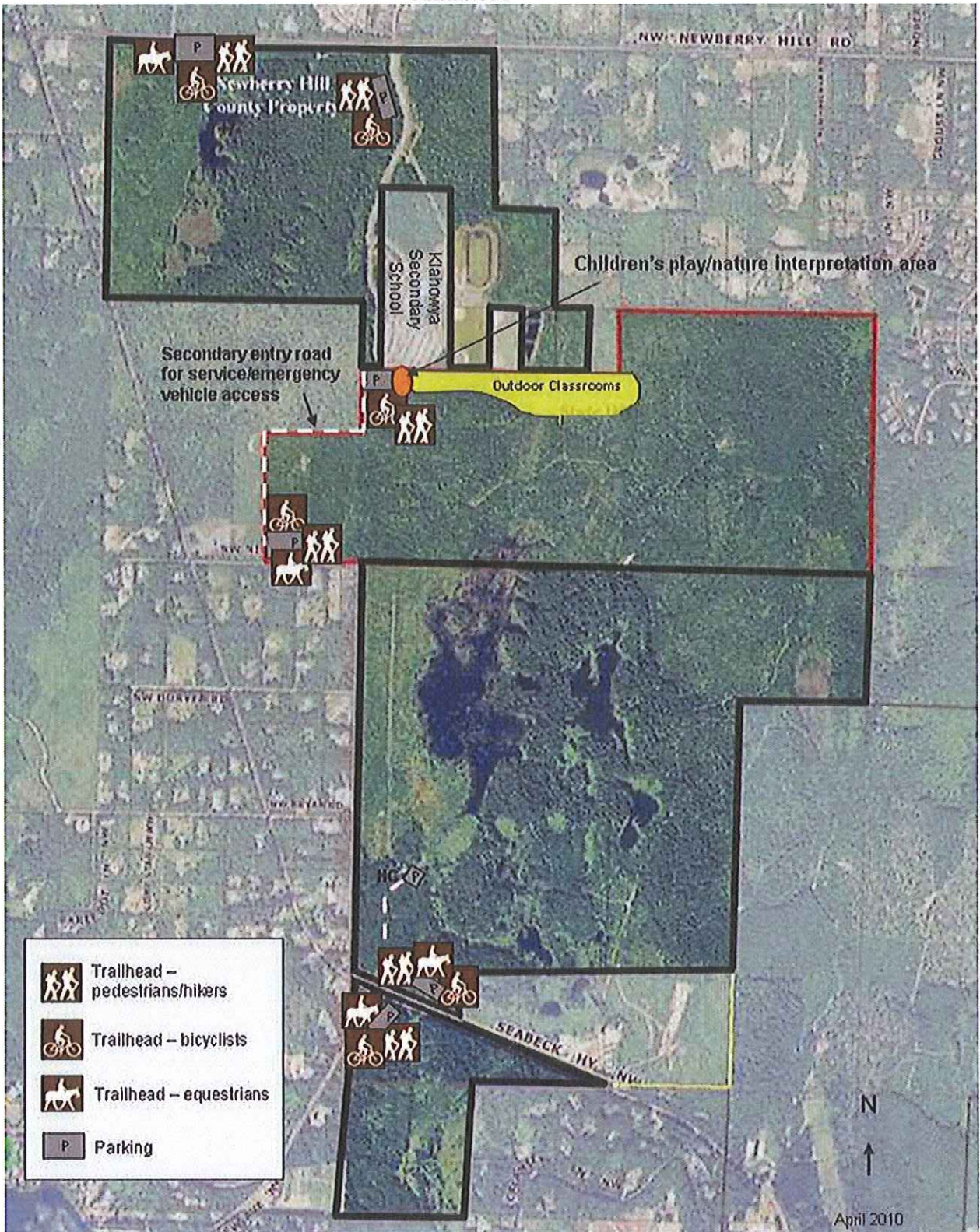
Charlotte Garrido, Commissioner

ATTEST:



Opal Robertson, Clerk of the Board

Exhibit A



Refined Concept – April 2010

Features – at full buildout

- 6 trailheads
- Outdoor classroom area adjacent to school
- Children's play/nature interpretation area
- Parking: 1) west of water tower, 2) school entry road (west side), 3) just south of the school near the play/outdoor classroom areas, 4) behind CKFD north of Nicholas Street, and 5) on both sides of Seabeck Highway.

Location/configuration/signage for parking will need to be studied for traffic safety, maintenance/operations feasibility, and soil structure/hydrology.

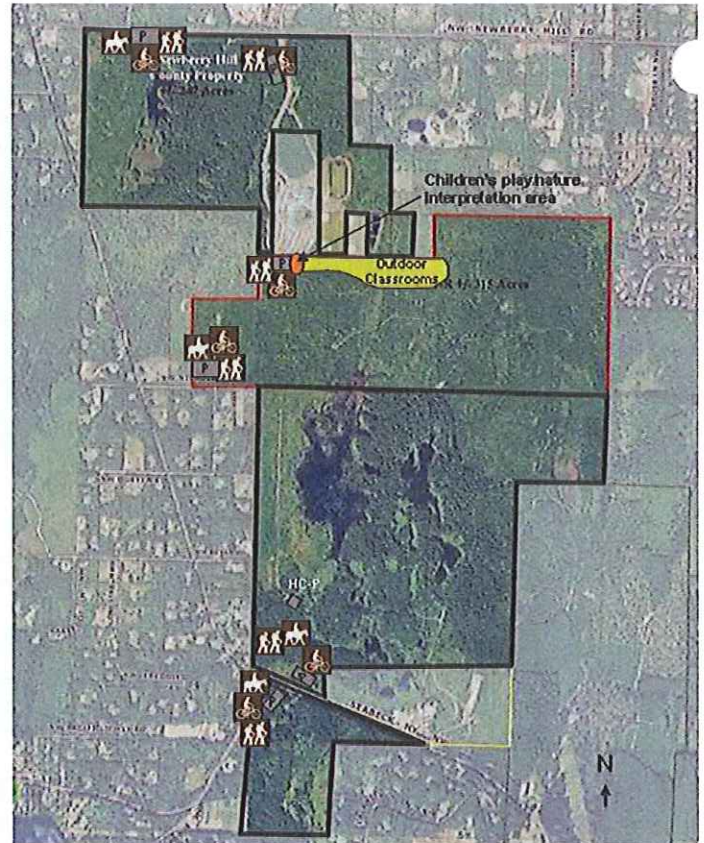


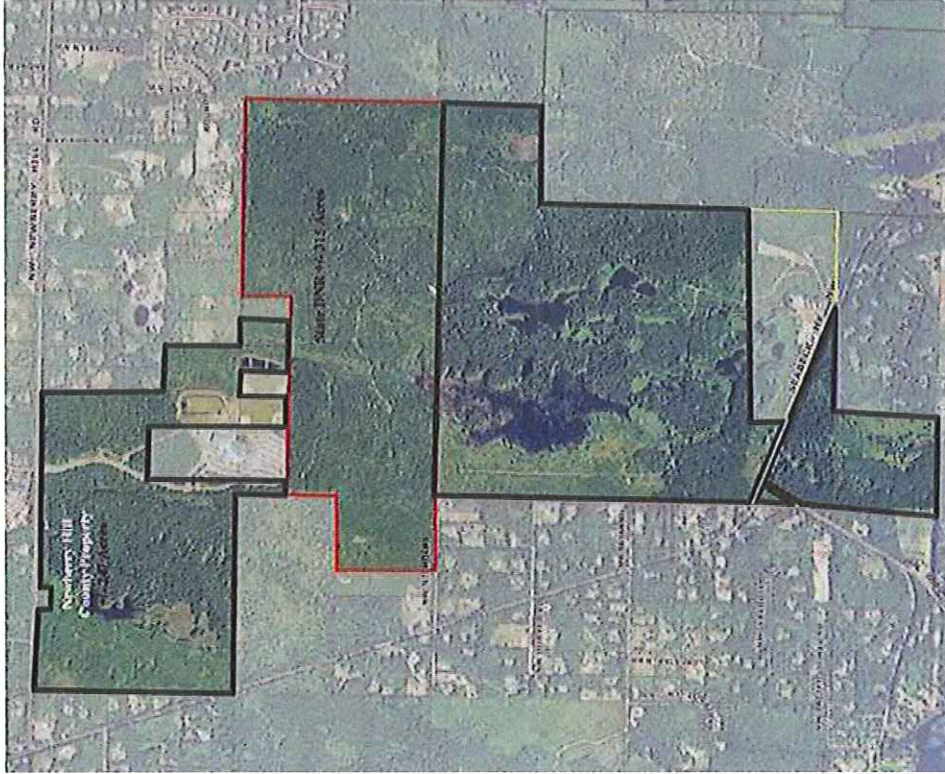
EXHIBIT B

Summary of Master Plan Process

[November 2009 – May 2010]

Newberry Hill Heritage Park

Master Plan



Newberry Hill Heritage Park
BOCC Meeting June 08, 2010

Mississippi County Parks and Recreation
380-387-5264 pb. 380-377-8285 fax
<http://www.msstate.gov/parks>
6 N. Jackson Street, MS-1
P.O. Box 20000
Jackson, MS 39202



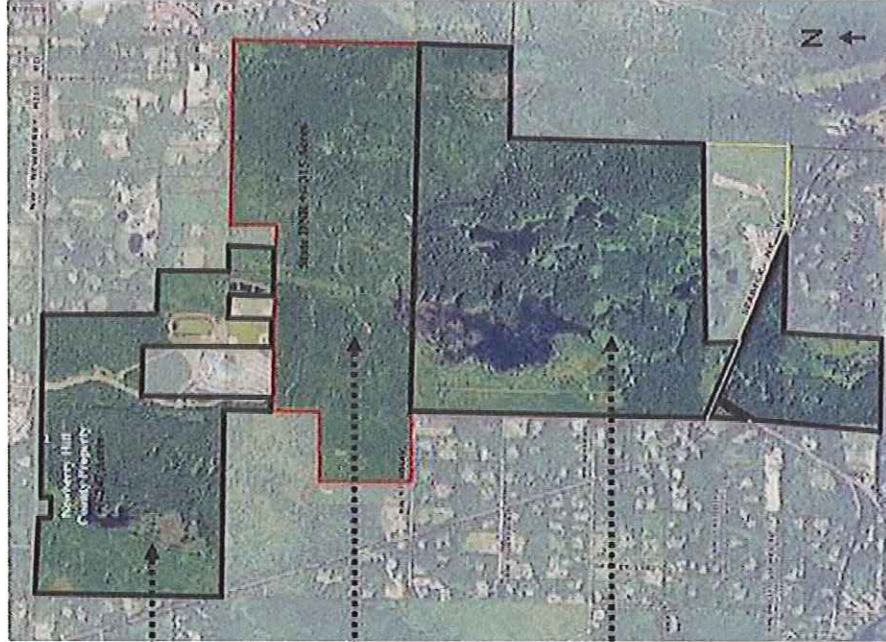
Acquisition of Park Parcels

247 acres purchased 2004

315 acres to be transferred to Kitsap
County from DNR in 2010

520 acres acquired from DNR June 2009
with the aid of RCO grant funding

1,082 acres total



Conceptual Master Plan: Public Process 2009 - 2010

Observations / Concept Development	November 19, 2009	Kick Off Public Meeting /Workshop I / Begin Guiding Principles
	January 12, 2010	Workshop II – Finalize Guiding Principles / Begin Draft Concepts
	February 16, 2010	Workshop III – Refine concepts
Proposals / Refinement	March 2, 2010	Workshop IV – 1 st Draft Conceptual Plan
Master Plan Drawing	April 13, 2010	Workshop VI – Final Conceptual Plan
	May 2010	Conceptual Plan approved by Parks & Recreation Advisory Board
Next Steps	Summer/Fall 2010	Create Trail Mgt. Plan, Inter-Local Agreements, Narrative Text, etc. to complete Final Report



Newberry Hill Heritage Park
BOCC Meeting June 23, 2010

Kissup County Parks and Recreation
300-307-1300 ext. 300-307-2305 fax
http://www.kissupgov.com/parks
614 Division Street, AS-7
Port Orchard, WA 98043



Master Plan Steering Committee



Parks & Recreation Advisory Board

- Helen Daly

Newberry Hill Stewardship Committee

- Tom Coleman

Central Kitsap Community Council

- Sue Fox, Tex Lewis, Bob Moyer, Jon Pearson, Richard Shattuck, Roger Zabinski



Outreach

Also invited/involved:

- Backcountry Horsemen
- Central Kitsap Fire & Rescue
- Central Kitsap School District/Klahowya Secondary School
- CK Water District
- Disk Golf
- Kitsap PUD
- Kitsap Mountain Biking
- Kitsap Rifle & Revolver Club
- Leadership Kitsap
- Neighbors w/in ¼ mile of park (by postcard)
- Sports clubs/groups
- Suquamish Tribe
- and many others . . .



Communication / Education Tools January Park Tours



Horseback: Equestrian style!
Saturday Jan. 16, February 27



Bike: Overall view of the park
Saturday Jan. 23



Monthly Work Party
Saturday Jan. 23



Hike: Northern Section
Wednesday Jan. 27



Hike: Southern Section & Chico Creek
Saturday Jan. 30



Communication / Education Tools

KITSAP COUNTY Parks and Recreation

Home | About Us | Contact Us | News | Events | Programs | Services | Board of Commissioners

**Planning 3 Capital Projects
Parks and Recreation E-year Capital Facilities Plan (CFP)**
2010-2014 6-year Parks and Recreation Capital Facilities Plan
CFP Projects Update
Click here to see a summary of Capital Facilities Plan (CFP) projects (updated periodically)

Newberry Hill Heritage Park Master Plan
Nov. 2009 - May 2010
Public workshops will be held monthly November 2009 - May 2010 at Audubon Sanctuary School. Information from each workshop will be available to the public online after each meeting.
The last public workshop was April 13, 2010. It is 8 pm at Audubon Sanctuary School. The next meeting will be held on November 10, 2009. Board on April 13, 2010. The Board will be the Board of County Commissioners for adoption in June 2010.
Newberry Hill CDF Assessment - January Presentation
Newberry Hill CDF Assessment - March Presentation
Project of the Department under construction
See all master planning public comments received to date.
Do you have any questions or comments regarding the future of the park? We'd love to hear from you. Please email us regarding questions, questions or suggestions by email: sherwin@kitsap.king.wa.us.
Public Think of Park, led by Stewardship Group Volunteers
Many thanks to our volunteer Stewards who dedicated their time to the program and held public tours of the park on the following dates: **March 28, 2009** (8:00 am - 12:00 pm), **April 22, 2009** (8:00 am - 12:00 pm), **June 27, 2009** (8:00 am - 12:00 pm).
Join the Stewardship Group for a monthly walk through the park. Stewardship Coordinator at 360.333.5372 or Stewardship@kitsap.king.wa.us
Thank you Stewardship Group volunteers!

County Website
&
Newspaper
"Calendar"
Announcements

You are invited to the third meeting for the Newberry Hill Heritage Park Master Plan

Date/Time: Tuesday, February 16, 2010, 6 - 8 pm
Place: Audubon Sanctuary School, 7527 Newberry Hill Rd.
Contact: Kitsap CDF at 360.337.5777 (no RSVP required)

This third meeting will:

- Review public comment received to date
- Review the refined draft concept for park uses and locations based on public input November 2009 - January 2010

See the Nov. 2009 and Jan. 2010 presentations, as well as all public comment at: http://www.kitsapgov.com/board-services_msc/cdf/updates_projects.htm.

Postcards to all residences within 1/4 mile of the park boundaries

Comment Cards & Public Comments
posted with individualized responses

Newberry Hill Heritage Park
BOCC Meeting June 28, 2010

Communication / Education Tools



Physical Model

1" = 200'

10' contour layers

All existing mapped trails indicated

Newberry Hill Heritage Park

BOCC Meeting June 28, 2010



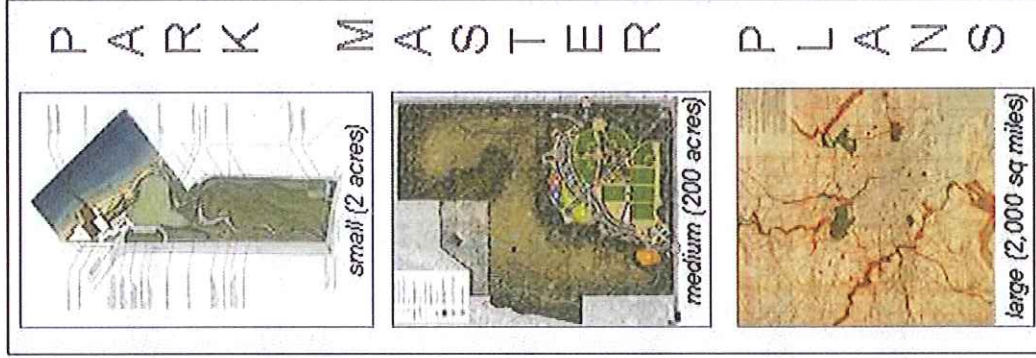
Knox County Parks and Recreation
2000 West Main St., 2nd Floor, Knoxville, TN 37901
http://www.knox.gov/parks
614-528-0100, 614-528-0101
Fax: 614-528-0101

What is a Park Master Plan?

A road map guiding renovations and additions to grounds, buildings, infrastructure, to meet both immediate and long-term needs.

Why do a Park Master Plan?

- To ensure that every dollar spent improving the park's physical plant supports the park's mission
- To safeguard the value of volunteer efforts to maintain and improve the park
- So that our daily decisions are part of a long term vision
- To raise our aspirations
- To raise \$\$



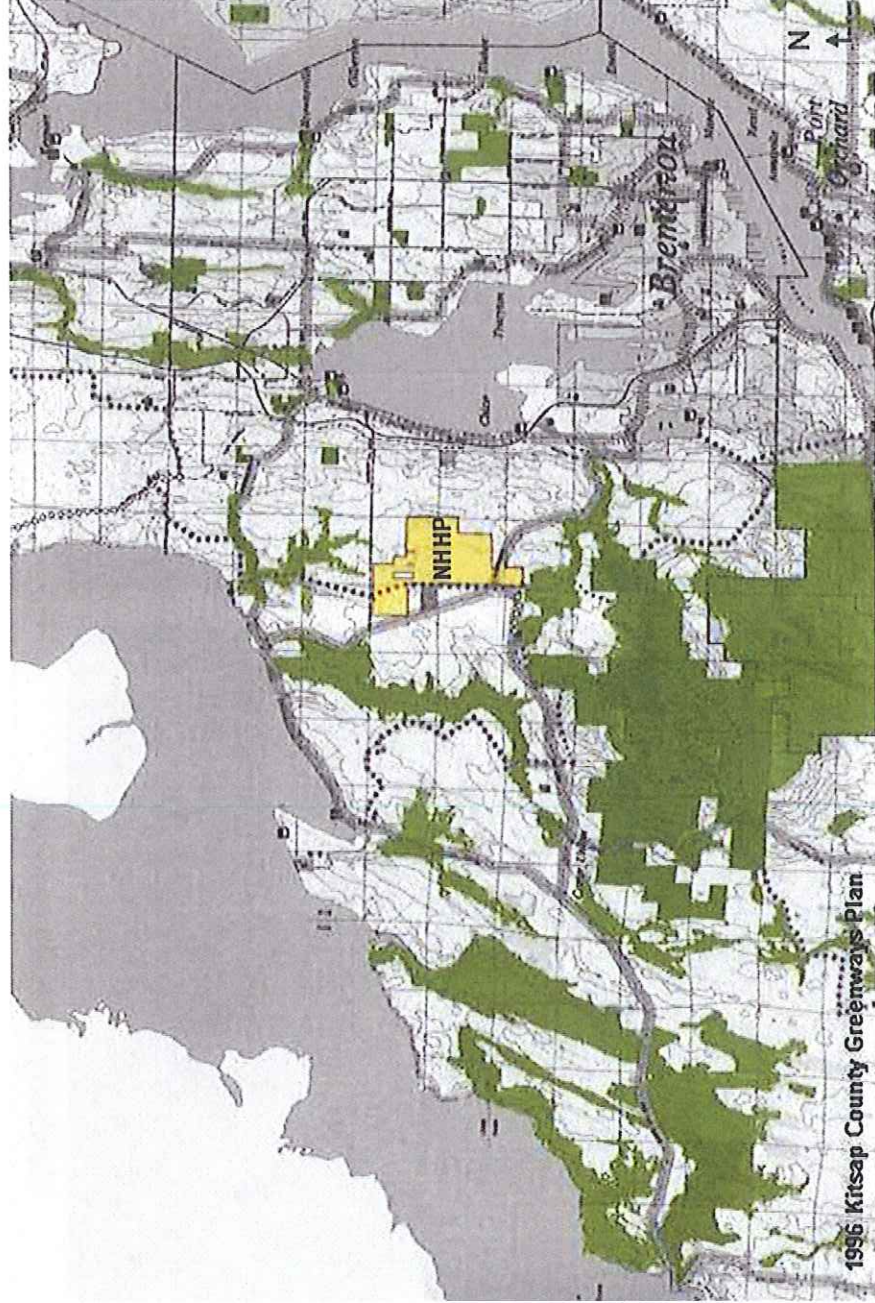
Guiding Principles

Newberry Hill Heritage Park's future development should:

- Celebrate the natural beauty and protect the ecological health of plant/wildlife communities and watershed headwaters
- Offer safe, inviting, and clear access points and wayfinding throughout the park
- Maximize the park's educational potential for students and the larger community in safe and engaging ways
- Connect to nearby regional trail systems
- Offer a variety of non-motorized recreational uses appropriate to the ecological characteristics of the land and within the County's ability to build and maintain them
- Contribute to the park's role as a good neighbor to surrounding communities



Observations – Regional Context, Natural Corridors



**Newberry Hill Heritage Park
BOCC Meeting June 23, 2010**

Kitsap County Parks and Recreation
360-337-3110 ext. 360-337-3285 fax
http://www.kitsapgov.com/parks
614 Division Street, MS-7
Port Orchard, WA 98366



Scale: How Big Is It?



Newberry Hill Heritage Park

1,047 acres

“Really Big.”



Downtown Silverdale

1,047 acres

Newberry Hill Heritage Park
BOCC Meeting June 18, 2010

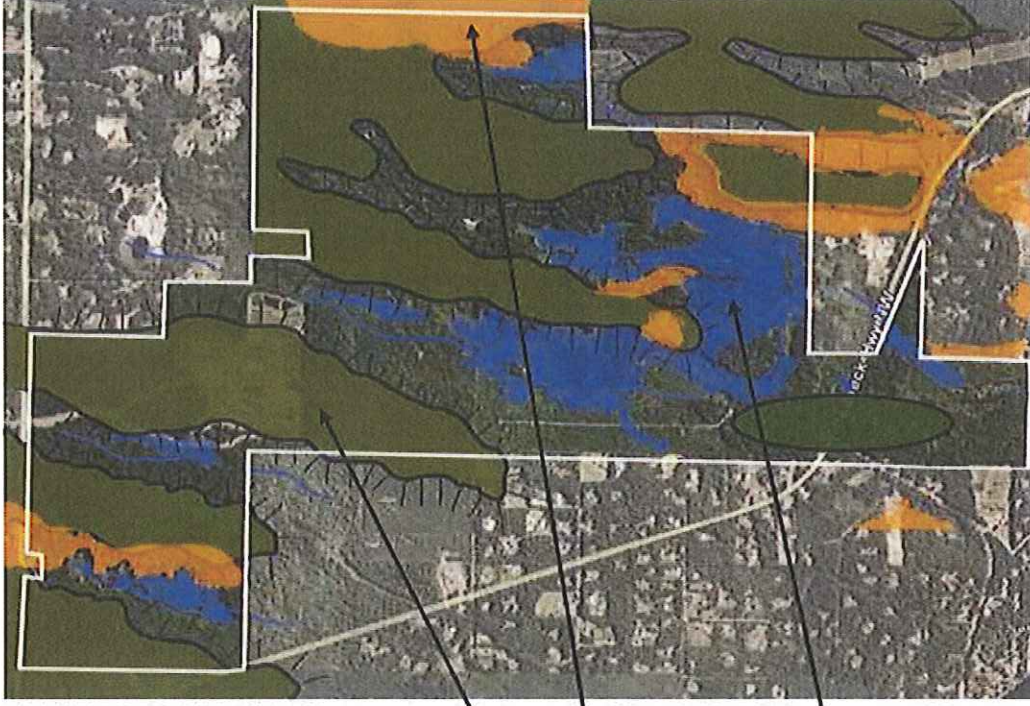
Missoula County Parks and Recreation
5400 32nd Ave. PO Box 201220
Missoula, MT 59712
Phone: 406.541.2222
Fax: 406.541.2222



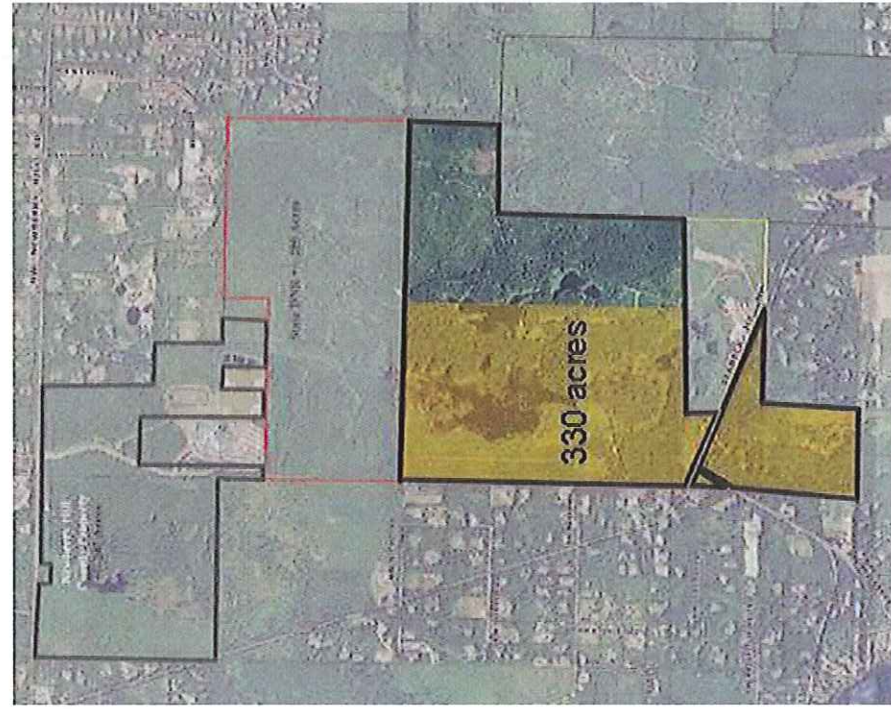
Summary of Observations

Where can facilities be located?

- Any major new facilities / improvements should focus on the “fingers” of highlands and avoid “moderate geohazard” areas.
- Sensitive wetland areas should be protected from unnecessary disturbance.



RCO Grant Conservation Easement (RCO Grant #04-1547 WWRP-HCA-UW)



- Provides habitat for wildlife species, food fish, shellfish, or freshwater or marine fish.
- May serve as a corridor for wildlife movement in existing populated areas.
- May include and encourage public use for wildlife interpretation and observation.
- Includes development of facilities limited to such elements as fencing, interpretive/observation trails, interpretive signs/kiosks, rest rooms, parking, and creation or enhancement of habitat.



Critical Areas Ordinance Requirements

13.200.220 Wetland Buffer Requirements – a key requirement



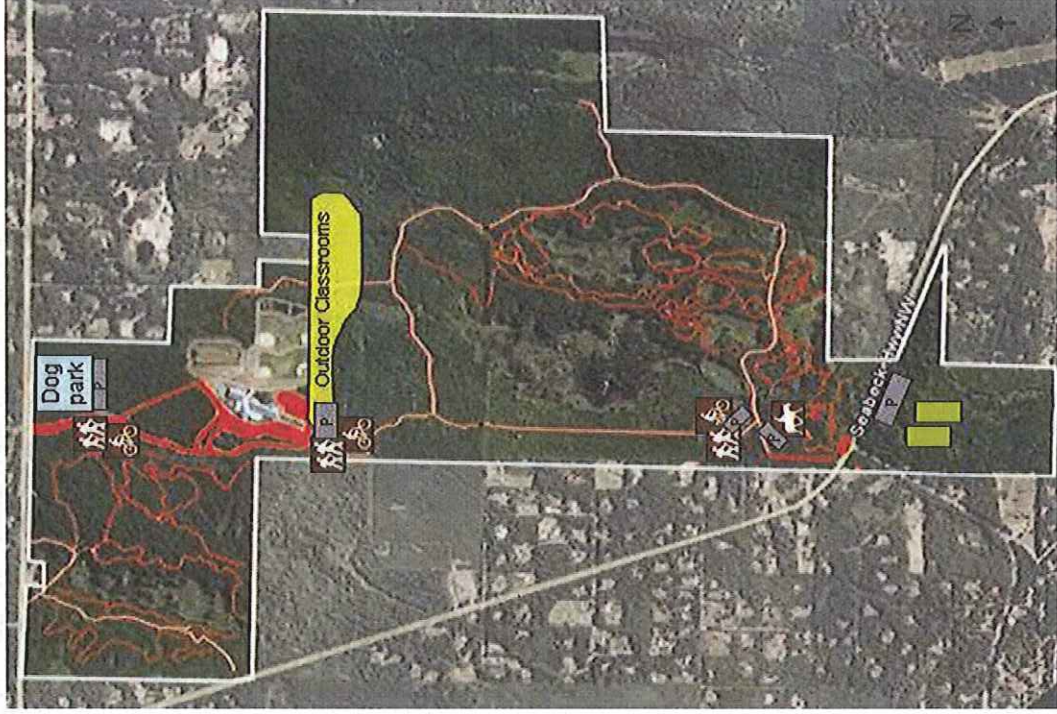
4. Trails and related facilities shall generally be located outside required buffers. Where trails are permitted within buffers they shall be located in the outer portion of the buffer and a minimum of 30 feet from the wetland edge, except where wetland crossings or viewing areas have been approved.

Jan. 12 ~ Concept A

Features

- 3 trailhead locations
- Outdoor classroom area adjacent to school
- Athletic fields *
- Dog Park
- Parking at Newberry Hill, next to school, at southern trail head within park, and south of Seabeck Highway

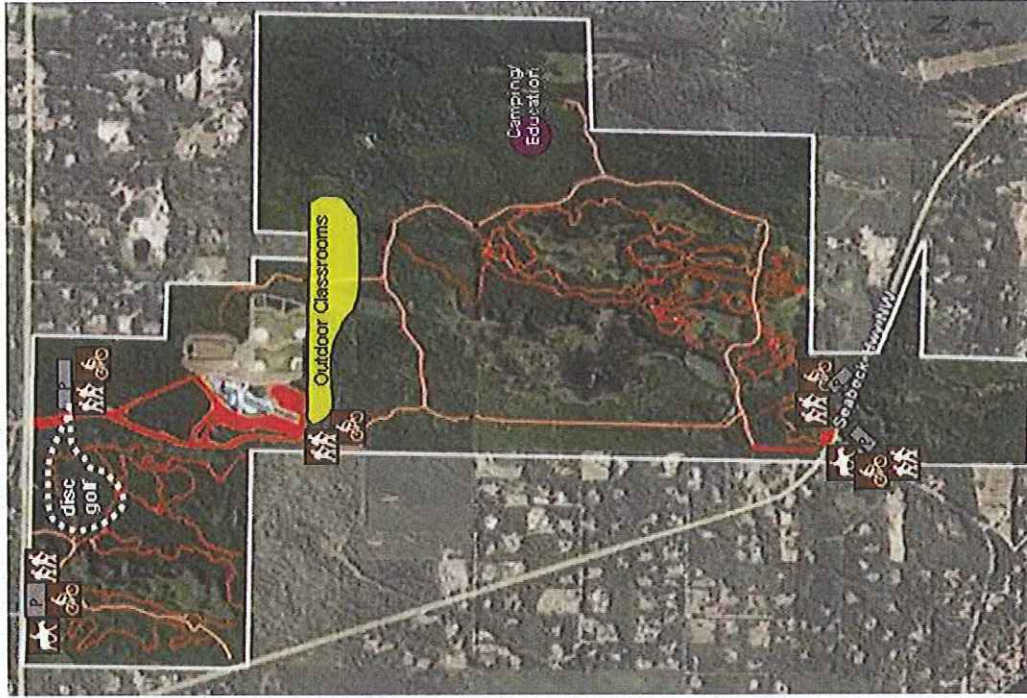
* Subject to adjustment to RCO Conservation Easement boundary – possible, but no guarantee, time-consuming, and requires funding for process



Jan. 12 ~ Concept B

Features

- 5 trailhead locations
- Outdoor classroom area adjacent to school
- Camping / additional outdoor classroom area in eastern portion
- Disc Golf course near Newberry Hill and parking
- Parking west of water tower, at entrance to school from Newberry Hill, and on both sides of Seabeck Highway

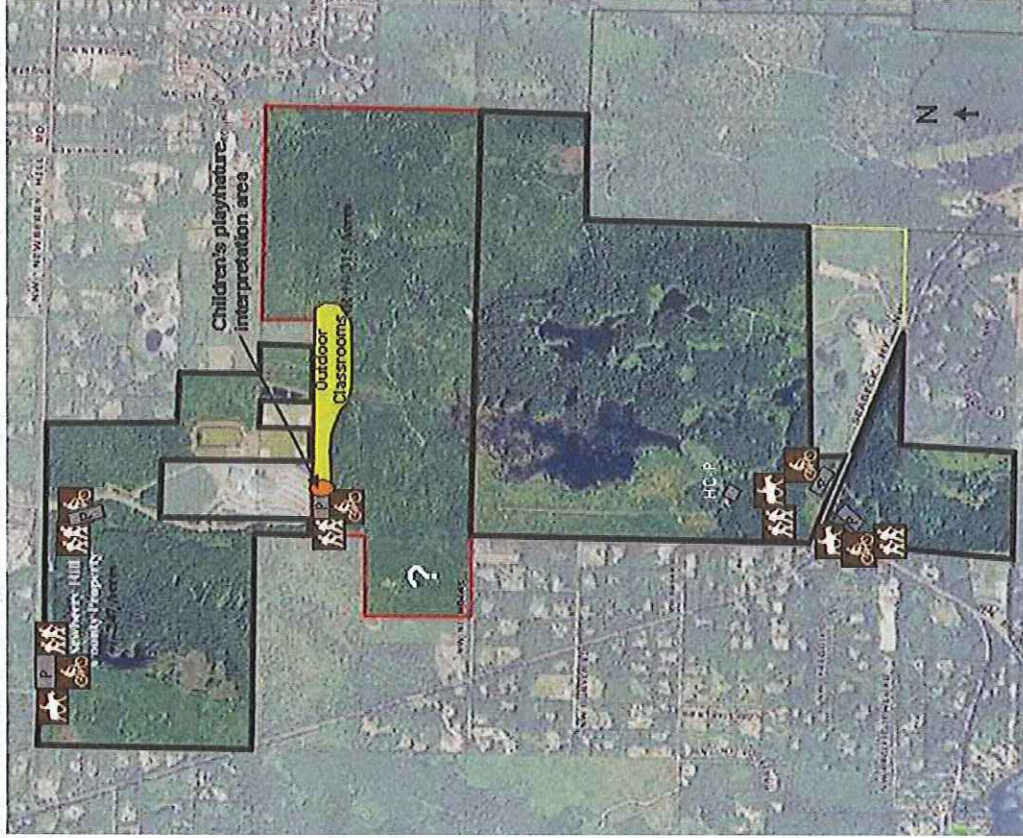


Refined Concept - March 2, 2010
*based on public input Feb. 16, public
comment since Feb. 16, and Steering
Cmte. Meeting Feb. 24*

Features – at full buildout

- 5 trailheads
- Outdoor classroom area adjacent to school
- Children's play/nature interpretation area
- Parking: 1) west of water tower, 2) school entry road (west side), 3) just south of the school near the play/outdoor classroom areas, and 4) on both sides of Seabeck Highway.

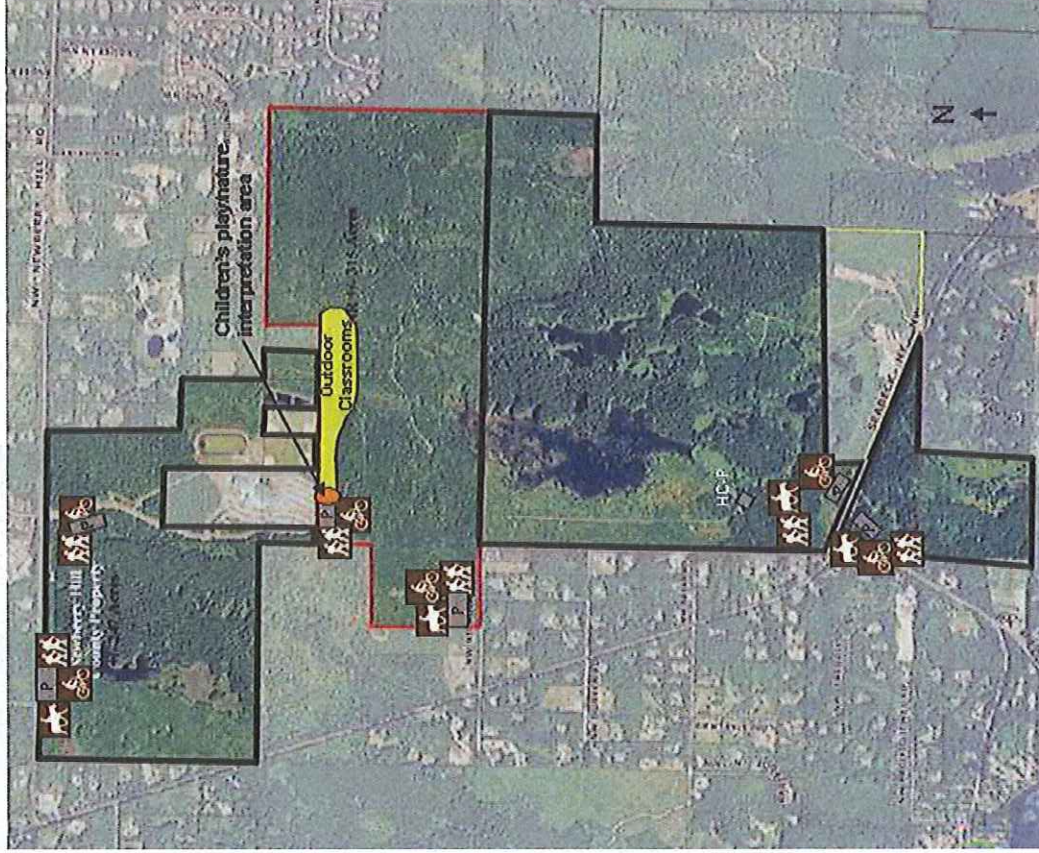
Location/configuration/signage for parking will need to be studied for traffic safety, maintenance/operations feasibility, and soil structure/hydrology.



Refined Concept – April 2010

- Features – at full buildout
- 6 trailheads
 - Outdoor classroom area adjacent to school
 - Children's play/nature interpretation area
 - Parking: 1) west of water tower, 2) school entry road (west side), 3) just south of the school near the play/outdoor classroom areas, 4) behind CKFD north of Nicholas Street, and 5) on both sides of Seabeck Highway.

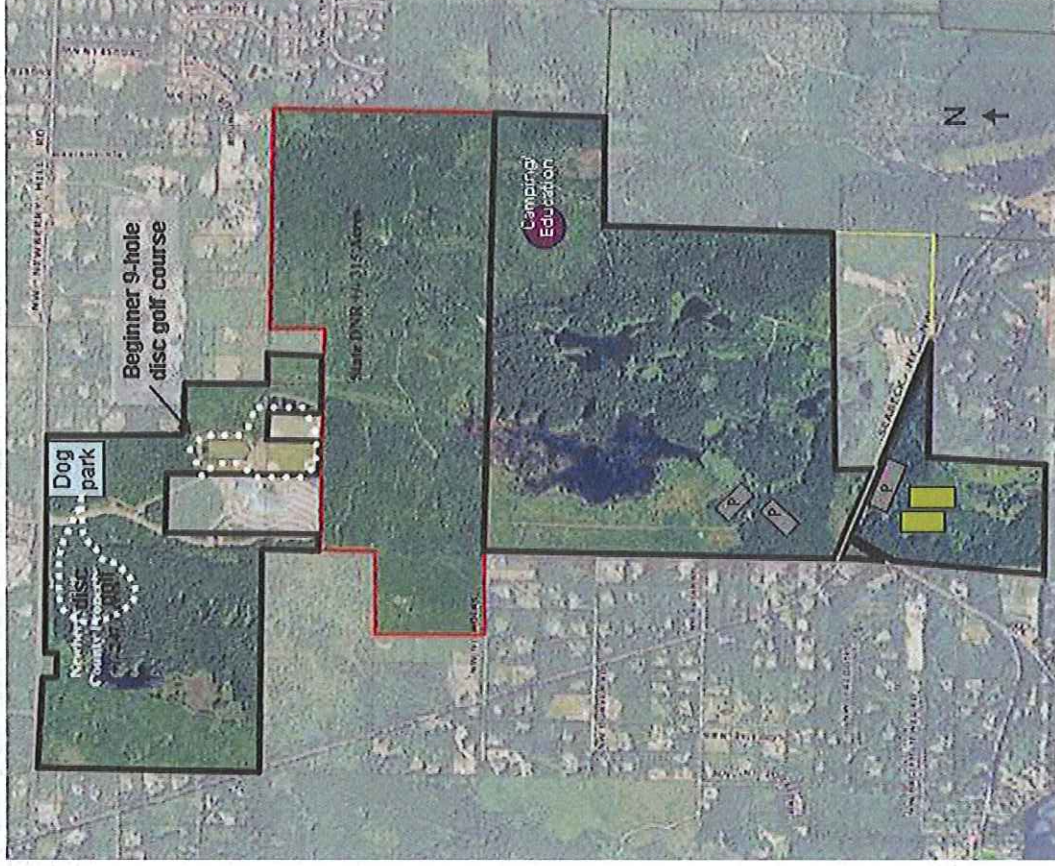
Location/configuration/signage for parking will need to be studied for traffic safety, maintenance/operations feasibility, and soil structure/hydrology.



What is not in the concept?

- No permanent camping facility although the eastern forest is suitable for supervised group camping/educational experiences.
- No major parking deep inside the park near Seabeck Hwy. Limited handicapped parking may be created at the first major trailhead for use during planned public events.
- A disc golf course, soccer fields, and a dog park will be mentioned in the final report as uses that may be accommodated in future plan updates if the need is identified at this site and supporting infrastructure (especially parking) can be accommodated at the same time.

Note: Traffic capacity and safe crossings must be considered along Newberry Hill Road and Seabeck Highway.

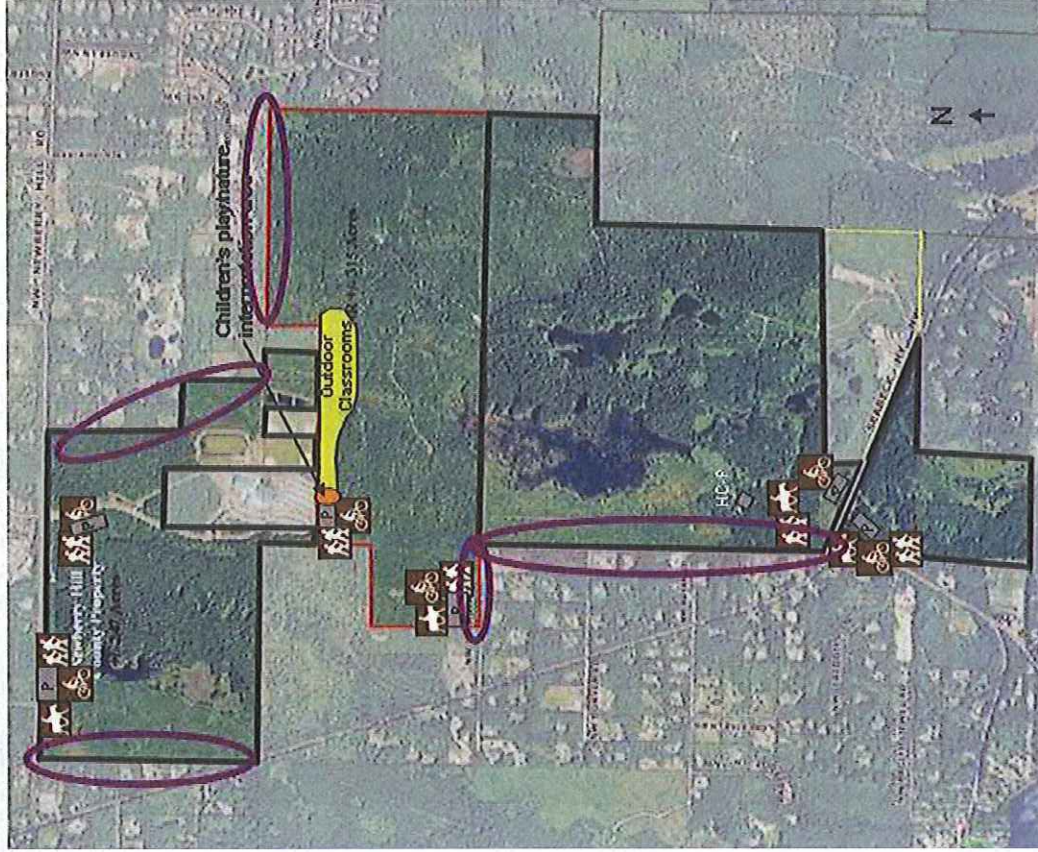


Being a good neighbor

Features

- The County will maintain a buffer between trail features and nearby residential property boundaries. This may require moving some trail alignments slightly over time.

Trails/roads may be realigned where those features are <300' from property lines and new or more intense uses are introduced.



Newberry Hill Heritage Park

Master Plan

